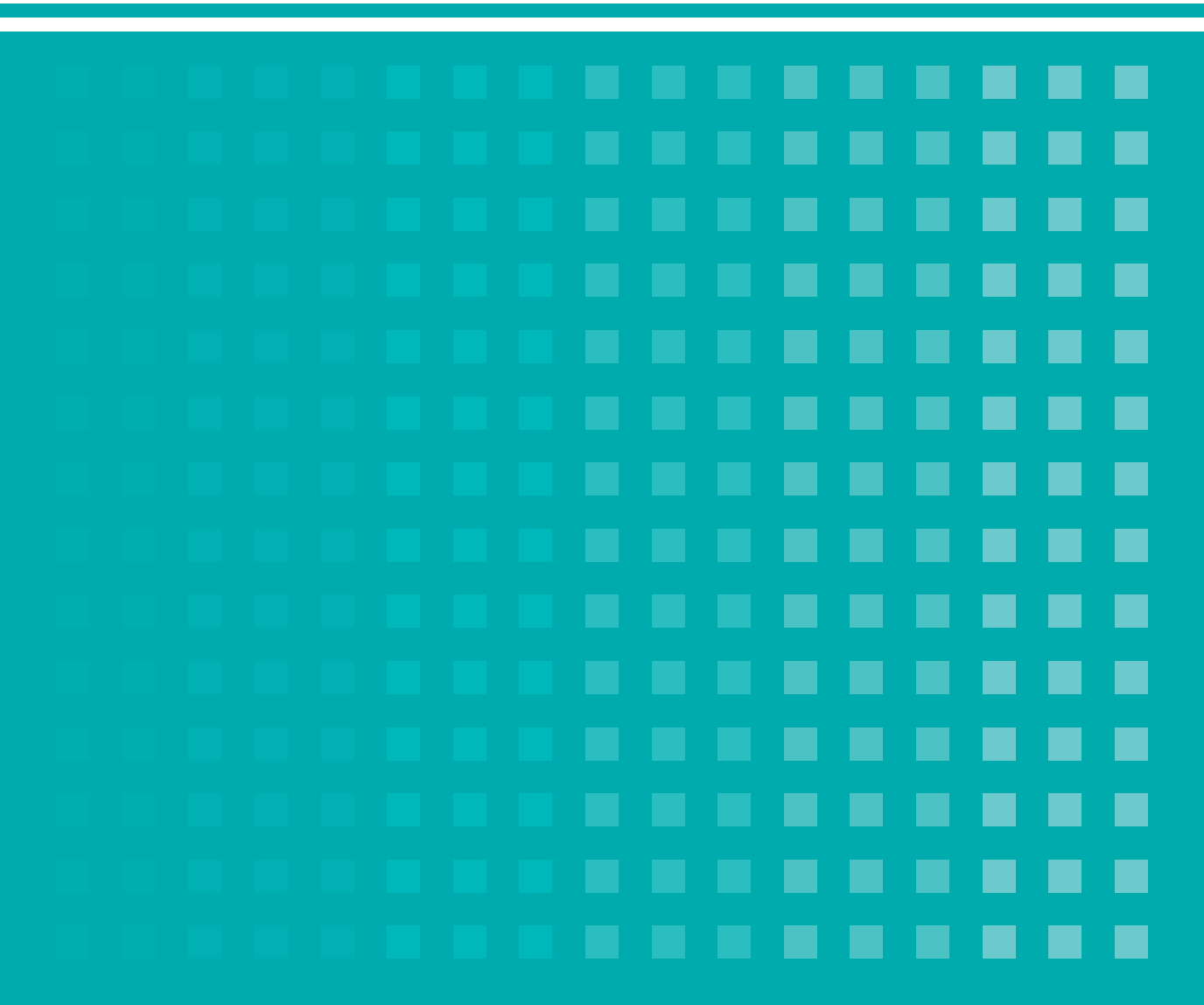


OUTLINE OF NAGASAKI UNIVERSITY 2017



Nagasaki University's Philosophy

Nagasaki University contributes to the improvement of a well-balanced society by transmitting its inheritance of the traditional culture rooted in Nagasaki, cultivating a fertile creative sense in students, and developing innovative science for world peace.

Fundamental Targets of the University

Nagasaki University, located in a region that geographically faces the Asian Continent across the East China Sea, possesses the history and memory of Dejima and is invested with a unique mission by the atomic bombing. To honor the special history and carry forward its mission, Nagasaki University seeks to develop new values and human resources with outstanding personal qualities capable of contributing to the sustainable development of a rapidly changing modern world and local community, on the basis of its unique features and tradition that have been nurtured for many years. For the promotion of bold innovations and reform under the leadership of the president, Nagasaki University has specifically set the following objectives for the Third Mid-term Target Period:

- (1) To become a world-class center of “global health” education and research that contributes to human health on a global scale through interdisciplinary integration of preventive medicine, health economics and other related areas, building on our outstanding achievements in the areas of tropical medicine, infectious diseases, and life sciences and radiation research.
- (2) To significantly improve the overall excellence of the entire university across all disciplines to establish a foundation for becoming one of the world’s best universities by promoting the sophistication and internationalization of every education and research area, enhancing the collaboration with top-level universities inside and outside Japan, reforming management, operational and personnel systems, and appropriately rearranging university resources.
- (3) To develop Nagasaki University-brand human resources who have both the ability to address local community issues and the ability to be active on the international stage where multiple cultures co-exist by promoting strategic and comprehensive educational reform for the realization of international-level education, internationalization of the campus, and a dramatic increase in the number of Japanese students studying abroad in order to respond to the needs of the globalizing society.
- (4) To develop, especially in undergraduate education, excellent and unique graduates capable of immediately responding to the issues they face based on the problem-solving ability, creative thinking ability, communication skills and other abilities expected of graduates as well as knowledge and excellence in their respective areas of expertise. To achieved this by organically integrating new student-participation-centered liberal arts education and world-standard specialized undergraduate education. Moreover, to proactively develop and introduce a new method to select new students to measure basic and versatile abilities and qualities in order to effectively connect the new university education with the reform of high school education.
- (5) To serve as the driving force of regional revitalization in the age of globalization as a community-based university by staying close to the needs of the community and providing the benefits of the results of education and research to the local administration, industry, health and medical services, education, and tourism. Moreover, to focus on and promote especially the education and research in the specific areas that will greatly contribute to the sustainable development of the community and get directly connected to global-scale issues, including marine energy, marine biotic resources, water environment, community welfare and medicine, and abolishment of nuclear weapons. Finally, to strengthen the collaboration with Fukushima that has been maintained since immediately after the Great East Japan Earthquake in order to contribute to the creation of the future for Fukushima.

Contents

Historical Sketch

Historical Sketch	2
-------------------------	---

Organization

Organizational Chart	13
Successive Presidents of Nagasaki University	15
Board of Trustees	16
Members of the Presidential Nominations Committee	16
Members of the Management Committee	16
Members of the Education and Research Council	17
Board Members and Faculty/Administrative Staff	18
Number of Board Members and Faculty/Administrative Staff	21

Education and Research

Faculties and Schools	
School of Global Humanities and Social Sciences	22
Faculty of Education	22
Faculty of Economics	22
School of Medicine	22
School of Dentistry	22
School of Pharmaceutical Sciences	22
School of Engineering	22
Faculty of Environmental Science	22
Faculty of Fisheries	22
Graduate Schools	
Graduate School of Education	23
Graduate School of Economics	23
Graduate School of Engineering	23
Graduate School of Fisheries and Environmental Sciences	23
Graduate School of Science and Technology	23
Graduate School of Biomedical Sciences	23
Graduate School of International Health Development	23
School of Tropical Medicine and Global Health	23
Academic Calendar	23

University Facilities

University Research Institute: Institute of Tropical Medicine	24
University Research Institute: Atomic Bomb Disease Institute	24
University Library	24

University Hospital	25
Schools and Kindergarten Affiliated with the Faculty of Education	27
Faculty-affiliated Institutes for Education and Research	28
Center for Health and Community Medicine	28
University Institutes for Education and Research	28
Stations of Educational Research Projects	29
International Liaison Offices	29

Distinctive Education and Research

Distinctive Research	31
Distinctive Education	31

Number of Students, etc.

Number of Students	33
FY 2017 New Students	35
FY 2016 Graduates and Their Paths after Graduation	36
Change in After-graduation Paths for the Past Five Years	37
Number of Degrees Conferred	38

International Exchange

FY 2017 International Students	39
Agreements on Academic Exchange with Overseas Institutions	40
Faculty Staff Visited Overseas Institutions and International Researchers Visited NU in FY 2016	48

Social Contribution

Center for Industry, University and Government Cooperation	49
Industry-University Cooperation	50

Finances

FY 2017 Budget	51
Funds from Outside the University	51

Campus

Bunkyo Campus	52
Sakamoto Campus	53
Katafuchi Campus	55
Welfare Facilities	56
Land · Buildings · Ships	57
Address/TEL of Faculties, Centers, etc.	59
Location Map	62
Nagasaki University Logo	63



Historical Sketch

On November 12, 1857, Dutch army surgeon Pompe van Meerdervoort initiated medical lectures in the Dutch language to government doctor Ryojyun Matsumoto and 11 other persons. This medical school called Igaku Denshusho is the origin of today's School of Medicine as well as Nagasaki University.

1857. 11	• Igaku Denshusho was established	1876. 1	• Training Center was renamed Training Center for Elementary School Teacher.
1860	• Yojosho (Sanatorium) was established for citizens with the facilities for the hospital, chemical, pharmaceuticals, library, autopsy, and clinical training. (origin of Nagasaki University Hospital)	5	• Training Center for Elementary School Teacher was renamed Nagasaki Prefectural Normal School.
1861. 9	• Yojosho (Sanatorium) was improved and Igakusho was built next to it. (Facilities for medical education institution were completed.)	6	• Nagasaki Hospital Medical Training Center was established in Nagasaki Hospital to resume medical education.
1865	• Yojosho (Sanatorium) was renamed Seitokukan School of Medicine. In October, Bunseki Kyurijyo (educational institution to teach basic science including physics and chemistry) was established.	1877. 4	• Nagasaki Prefectural Normal School was renamed Kiyo Normal School.
1868. 10	• Seitokukan School of Medicine was renamed the Nagasaki City School of Medicine.	1878. 1	• Nagasaki Hospital Medical Training Center was renamed Nagasaki Medical School.
1869	• Nagasaki City School of Medicine was renamed Nagasaki Prefectural School of Medicine.	2	• National Nagasaki Normal School was discontinued. Its buildings and equipment were transferred to Nagasaki Prefecture.
1871. 10	• The Ministry of Education held jurisdiction over Nagasaki Prefectural School of Medicine and changed its name to National Nagasaki Medical School.	6	• Kiyo Normal School was renamed Nagasaki Normal School.
1874	• Due to troop deployment in Taiwan, education function of National Nagasaki Medical School was discontinued whereas hospital function was transferred to the branch hospital.	1879. 1	• Nagasaki Medical School became prefectural and had Nagasaki Hospital become its affiliated school.
2	• National Nagasaki Normal School was established.	1883	• According to the Ordinance of the Ministry of Education, Nagasaki Medical School was designated as a Class A medical school. (Medical license could be granted after graduation without taking national examinations. Only 13 such schools existed in Japan.)
3	• Nagasaki Elementary School Teacher Training Center was established.	1884. 6	• Nagasaki Prefectural Women's Normal School was established.
1875	• Due to the completion of troop deployment in Taiwan, buildings of the branch hospital were transferred to Nagasaki Prefecture. With a subsidy from the Japanese government, Nagasaki Hospital was established.	1886. 4	• Nagasaki Prefectural Women's Normal School merged with Nagasaki Normal School and established its Women's Branch.
2	• Nagasaki Elementary School Teacher Training Center was renamed Training Center.	6	• Nagasaki Normal School, Women's Branch established its affiliated kindergarten.
11	• Elementary School affiliated with National Nagasaki Normal School was established.	6	• According to the Normal School Ordinance, Nagasaki Normal School was renamed Nagasaki Prefectural Normal School for Primary Education.

1887.	8	<ul style="list-style-type: none"> According to the Higher Middle School Ordinance, the Fifth Higher Middle School, Department of Medicine was established. Nagasaki Medical School was discontinued in September. 	1921	<ul style="list-style-type: none"> Nagasaki Prefectural School of Teacher Training for Vocational Supplementary School Education was established in Isahaya-machi.
1890.	6	<ul style="list-style-type: none"> The Division of Pharmaceutical Sciences was established in the Fifth Higher Middle School, Department of Medicine. (origin of today's School of Pharmaceutical Sciences) 	1922.	4 <ul style="list-style-type: none"> Nagasaki Prefecture donated Nagasaki Hospital to the Japanese government. Nagasaki Hospital was renamed Hospital of Nagasaki Specialized School of Medicine. Nagasaki Specialized School of Medicine Training School for Nurses and Midwives was established.
1891.	9	<ul style="list-style-type: none"> The Fifth Higher Middle School, Department of Medicine and its Division of Pharmaceutical Sciences were relocated to a new building in Urakami Yamazato-mura, Nishisonogi-gun. (origin of the later establishment of Sakamoto Campus) 	1923.	3 <ul style="list-style-type: none"> Nagasaki Specialized School of Medicine was promoted to Nagasaki Medical College by the National Medical College System and established its Specialized School of Medicine and Specialized School of Pharmaceutics. Hospital of Nagasaki Specialized School of Medicine was renamed Nagasaki Medical College Hospital and established its Training School for Nurses and Midwives.
1894.	9	<ul style="list-style-type: none"> According to the Higher School Ordinance, the Fifth Higher Middle School, Department of Medicine and its Division of Pharmaceutical Sciences were renamed the Fifth Higher School, Department of Medicine and its Division of Pharmaceutical Sciences, respectively. 	1925.	4 <ul style="list-style-type: none"> Nagasaki Medical College, Specialized School of Medicine was discontinued.
1898.	4	<ul style="list-style-type: none"> According to the Teacher Education Ordinance, Nagasaki Prefectural Normal School for Primary Education was renamed Nagasaki Prefectural Normal School. 	1928	<ul style="list-style-type: none"> The Department of Fisheries was established in Nagasaki Prefectural School of Teacher Training for Vocational Supplementary School Education. (origin of today's Faculty of Fisheries)
1901.	3	<ul style="list-style-type: none"> According to the Specialized School Ordinance, the Fifth Higher School, Department of Medicine became independent from the Fifth Higher School and established Nagasaki Specialized School of Medicine as well as its Division of Pharmaceutical Sciences. 	1929.	2 <ul style="list-style-type: none"> Nagasaki Medical College Hospital Training School for Nurses and Midwives was renamed Nagasaki Medical College Hospital Training School for Midwives and Nurses.
1903		<ul style="list-style-type: none"> Nagasaki Prefectural Nagasaki Hospital Training School for Nurses was established. 	3	<ul style="list-style-type: none"> The Advanced Course of Trade was established in Nagasaki Higher Commercial School.
1905.	3	<ul style="list-style-type: none"> Nagasaki Higher Commercial School was established. (origin of today's Faculty of Economics on Katafuchi Campus) 	12	<ul style="list-style-type: none"> Nagasaki Medical College Nomo Marine Biological Laboratory was established.
1908.	4	<ul style="list-style-type: none"> Nagasaki Prefectural Normal School, Women's Branch became independent from Nagasaki Prefectural Normal School and established Nagasaki Prefectural Women's Normal School. 	1935.	4 <ul style="list-style-type: none"> Nagasaki Prefectural School of Teacher Training for Vocational Supplementary School Education was renamed Nagasaki Prefectural School of Teacher Training for Youth School Education.
1917.	5	<ul style="list-style-type: none"> The Department of Overseas Trade was established in Nagasaki Higher Commercial School. 	1937.	4 <ul style="list-style-type: none"> Nagasaki prefectural Normal School was relocated to a new building in Nishiurakami-mura, Nishisonogi-gun. (site of today's Elementary School and Lower Secondary School affiliated with the Faculty of Education)
1920.	11	<ul style="list-style-type: none"> Research Building was donated to Nagasaki Higher Commercial School. (today's Keirin Hall) 		

1939.	5	<ul style="list-style-type: none"> • Nagasaki Medical College Temporary Specialized School of Medicine was established. 	8	<ul style="list-style-type: none"> • The atomic bomb was dropped in Nagasaki City. A total of 979 teachers and students were victimized: 897 from Nagasaki Medical College (including Specialized School of Medicine and Specialized School of Pharmaceutics), 54 from Nagasaki Normal School, 27 from Nagasaki Higher Commercial School, and one from Nagasaki Youth Normal School.
1942.	3	<ul style="list-style-type: none"> • Nagasaki Prefectural School of Teacher Training for Youth School Education, Women's School was established in Isahaya Women's High School. 		
	3	<ul style="list-style-type: none"> • Nagasaki Medical College East Asia Research Institute of Endemics was established. (origin of today's Institute of Tropical Medicine) 		
	9	<ul style="list-style-type: none"> • Nagasaki Higher Commercial School Research Building was renamed Great East Asia Economic Research Institute. 		
1943.	4	<ul style="list-style-type: none"> • According to the Normal School Education Ordinance, Nagasaki Prefectural Normal School and Nagasaki Prefectural Women's Normal School were merged to establish National Nagasaki Normal School and was promoted to specialized school category. 		
1944.	3	<ul style="list-style-type: none"> • Nagasaki Higher Commercial School was renamed Nagasaki Specialized School of Economics. 		
	4	<ul style="list-style-type: none"> • Nagasaki Specialized School of Economics established Nagasaki Specialized School of Industrial Management on its campus. • According to the Normal School Education Ordinance, Nagasaki Prefectural School of Teacher Training for Youth School Education (Men's Branch and Women's Branch) became National Nagasaki Youth Normal School, and was promoted to specialized school category. Nagasaki Prefectural School of Teacher Training for Youth School Education, Department of Fisheries was discontinued. • Nagasaki Medical College Temporary Specialized School of Medicine was renamed Nagasaki Medical College Specialized School of Medicine. 		
1945.	6	<ul style="list-style-type: none"> • Nagasaki Medical College Hospital Training School for Midwives and Nurses was renamed Nagasaki Medical College Hospital Women's School of Public Welfare. 		

• History of Reconstruction after the atomic bombing is as follows.

1946.	4	<ul style="list-style-type: none"> • Nagasaki Specialized School of Industrial Management was discontinued. Great East Asia Economic Research Institute was renamed Institute of Industry Management. • Nagasaki Medical College East Asia Research Institute of Endemics was renamed Nagasaki Medical College Research Institute of Endemics. 			<ul style="list-style-type: none"> • Nursing School was established in the School of Medicine. • Nagasaki Medical College Specialized School of Pharmaceutics, Nagasaki Specialized School of Economics, Nagasaki Normal School, and Nagasaki Youth Normal School were discontinued. 	
1947.	3	<ul style="list-style-type: none"> • Nagasaki Medical College Specialized School of Medicine was discontinued. 		6	<ul style="list-style-type: none"> • The Department of Student Advising on Public Welfare Matters was renamed the Student Advising Department. 	
	5	<ul style="list-style-type: none"> • Nagasaki Higher School (under the old system of education) was established. 		1953.	3	<ul style="list-style-type: none"> • The Faculty of Arts and Sciences was relocated to Ohashi-machi, Nagasaki City. (today's Bunkyo Campus)
1948.	4	<ul style="list-style-type: none"> • Nagasaki Youth Normal School, Department of Fisheries was reestablished. 			4	<ul style="list-style-type: none"> • The Special Advanced Courses were established in the Faculty of Fisheries.
1949.	5	<ul style="list-style-type: none"> • Under the National School Establishment Law, Nagasaki University merged with Nagasaki Medical College, Nagasaki Medical College Specialized School of Pharmaceutics, Nagasaki Specialized School of Economics, Nagasaki Normal School, Nagasaki Youth Normal School, and Nagasaki Higher School to create a new University. It then established five faculties; Arts and Sciences (Course of Elementary School Teacher Training, Course of Lower Secondary School and High School Teacher Training), Economics (Department of Economics and Department of Commerce), Medicine (School of Medicine), Pharmaceutical Sciences (School of Pharmacy), and Fisheries (Department of Fisheries, Department of Marine Products Processing, and Department of Fishery Stock Enhancement), one library, and the Research Institute of Endemics. The Faculty of Arts and Sciences and the School of Medicine further set up the Elementary School, Lower Secondary School, Kindergarten, Hospital, and Nursing School. 		1954.	4	<ul style="list-style-type: none"> • Nagasaki University, Omura Branch was renamed Nagasaki University Extension Campus. • The Advanced Course was established in the Faculty of Economics.
	3	<ul style="list-style-type: none"> • Nagasaki Higher School was discontinued. 		1955.	4	<ul style="list-style-type: none"> • Research Division System was introduced into the School of Medicine. • Graduate School of Medical Sciences was established. • School of Midwifery was established in the School of Medicine.
	5	<ul style="list-style-type: none"> • The Departments of General Education in Omura and Nagasaki Campuses were restructured to establish Nagasaki University, Omura Branch. 		1956.	1	<ul style="list-style-type: none"> • The Student Advising Department was renamed the Student Services Department.
1950.	3				4	<ul style="list-style-type: none"> • The Advanced Course was established in the School of Pharmaceutical Sciences.
	5			1960.	3	<ul style="list-style-type: none"> • Nagasaki Medical College was discontinued.
	3	<ul style="list-style-type: none"> • Junior College of Business was established. 			4	<ul style="list-style-type: none"> • The Advanced Course was established in the Faculty of Fisheries.
	3			1962.	4	<ul style="list-style-type: none"> • Atomic Bomb Disease Institute was established in the School of Medicine.
	3			1964.	4	<ul style="list-style-type: none"> • Faculty of Liberal Arts was established. (Extension Campus was discontinued) • Construction of the training ship "Nagasaki-Maru" of the Faculty of Fisheries was completed.

1965.	3	<ul style="list-style-type: none"> • The Advanced Course in the School of Pharmaceutical Sciences was discontinued. 	1971.	2	<ul style="list-style-type: none"> • The libraries were restructured. (Branch libraries of the Faculty of Education, the Faculty of Fisheries, the School of Pharmaceutical Sciences, and the Institute of Tropical Medicine were discontinued while branch libraries of the Faculty of Economics and the School of Medicine were still continued.)
	4	<ul style="list-style-type: none"> • Graduate School of Pharmaceutical Sciences was established. • The Advanced Course was established in the Faculty of Arts and Sciences. 		4	<ul style="list-style-type: none"> • School for Handicapped Children was established in the Faculty of Education. • The Department of Commerce, Faculty of Economics was renamed the Department of Management. • The Department of Pharmaceutical Chemistry was established in the Graduate School of Pharmaceutical Sciences.
1966.	4	<ul style="list-style-type: none"> • Health Center was established. • The School of Engineering (Departments of Mechanical Engineering and Electrical Engineering) was established. • Faculty of Arts and Sciences was renamed the Faculty of Education. The Advanced Course in the Faculty of Arts and Sciences was renamed the Advanced Course in the Faculty of Education. 			
1967.	4	<ul style="list-style-type: none"> • School for Handicapped Children Teacher Training Course was established in the Teacher Education Division, Faculty of Education. • The Department of Pharmaceutical Chemistry was established in the School of Pharmaceutical Sciences. • The Department of Structural Engineering was established in the School of Engineering. 	1972.	4	<ul style="list-style-type: none"> • The Department of Industrial Chemistry was established in the School of Engineering.
	6	<ul style="list-style-type: none"> • Research Institute of Endemics was renamed the Institute of Tropical Medicine. • The Fisheries Laboratory was established in the Faculty of Fisheries. 		5	<ul style="list-style-type: none"> • Atomic Bomb Medical Information Center was established in the School of Medicine. • Medicinal Plant Garden was established in the School of Pharmaceutical Sciences.
1968.	4	<ul style="list-style-type: none"> • The Department of Trade was established in the Faculty of Economics. 	1973.	4	<ul style="list-style-type: none"> • The Departments of Fishing, Fish Production, and Fish Breeding of the Faculty of Fisheries were restructured to establish the Department of Fisheries. • The Advanced Course in Civil Engineering was established in the School of Engineering. • Educational Engineering Center was established in the Faculty of Education.
1969.	4	<ul style="list-style-type: none"> • The Department of Civil Engineering was established in the School of Engineering. 			
	12	<ul style="list-style-type: none"> • Electric Computer Center was established. 	1974.	4	<ul style="list-style-type: none"> • The Departments of Fishing, Fish Production, and Fish Breeding of the Graduate School of Fisheries were restructured to established the Department of Fisheries. • The Advanced Course in Materials Science and Engineering was established in the School of Engineering. • The Kindergarten Teacher Training Course was established in the Teacher Education Division, Faculty of Education.
1970.	4	<ul style="list-style-type: none"> • The Advanced Courses in the Faculty of Fisheries were discontinued. (The Advanced Courses in Fishing, Fish Production, and Fish Breeding were discontinued, leaving in operation only the Advanced Course in Officer Training, with its name changed to the Advanced Course in Deep-sea Fishing.) • Graduate School of Fisheries was established. • The Department of Materials Science and Engineering was established in the School of Engineering. 			

		<ul style="list-style-type: none"> • Atomic Bomb Medical Information Center was renamed the Scientific Data Center for Atomic Bomb Disaster. 	11	<ul style="list-style-type: none"> • Drainage Analysis Science Center was established. (Drainage Analysis Center was discontinued.)
1975.	4	<ul style="list-style-type: none"> • The Reference Room for the Tropical Medicine was established in the Institute of Tropical Medicine. 	1980. 4	<ul style="list-style-type: none"> • Laboratory Animal Center for Biomedical Research was established in the School of Medicine.
	6	<ul style="list-style-type: none"> • Construction of the training ship “Kakuyo-Maru” of the Faculty of Fisheries was completed. 		<ul style="list-style-type: none"> • The preparatory office for founding of the University Hospital of the School of Dentistry was established.
1976.	4	<ul style="list-style-type: none"> • Drainage Analysis Center was established. 	1981. 4	<ul style="list-style-type: none"> • The Department of Electronic Engineering was established in the Graduate School of Engineering Science.
		<ul style="list-style-type: none"> • The Department of Electronic Engineering was established in the School of Engineering. 		<ul style="list-style-type: none"> • University Hospital of the School of Dentistry was established.
		<ul style="list-style-type: none"> • Graduate School of Engineering Science was established. 	1982. 4	<ul style="list-style-type: none"> • The preparatory office for founding of the University Hospital of the School of Dentistry was discontinued.
1977.	4	<ul style="list-style-type: none"> • Shimabara Joint Training Center for National Universities in Kyushu Area was established. 		<ul style="list-style-type: none"> • The Divisions of Economics & Law and Management Information, Department of Commerce and Economics, Junior College of Business were reorganized into the Divisions of Economics, Economic Law, and Management Information.
		<ul style="list-style-type: none"> • The Department of Civil Engineering was established in the Graduate School of Engineering Science. 		<ul style="list-style-type: none"> • The Department of Mechanical Engineering II was established in the Graduate School of Engineering Science.
		<ul style="list-style-type: none"> • The Advanced Courses (Mechanical Engineering, Electrical Engineering, and Structural Engineering) in the School of Engineering were discontinued. 	1983. 4	<ul style="list-style-type: none"> • The preparatory office for founding of the School of Allied Medical Sciences was established.
		<ul style="list-style-type: none"> • The preparatory office for founding of the School of Dentistry was established. 		<ul style="list-style-type: none"> • International House was established.
		<ul style="list-style-type: none"> • The Department of Commerce, Junior College of Business was renamed the Department of Commerce and Economics (Economics & Law and Management Information). 		<ul style="list-style-type: none"> • School of Allied Medical Sciences (Department of Nursing) was established.
1978.	3	<ul style="list-style-type: none"> • RI Center was established. 	1984. 4	<ul style="list-style-type: none"> • The preparatory office for founding of the School of Allied Medical Sciences was discontinued.
	4	<ul style="list-style-type: none"> • The Department of Mechanical Engineering II was established in the School of Engineering. 		<ul style="list-style-type: none"> • Junior College of Business was renamed the Junior College of Commerce.
1979.	4	<ul style="list-style-type: none"> • Animal Research Center for Tropical Infections was established in the Institute of Tropical Medicine. 		<ul style="list-style-type: none"> • 18 divisions of the Department of Fisheries, Faculty of Fisheries were reorganized into six large ones.
	5	<ul style="list-style-type: none"> • The Branch Library of the School of Medicine was renamed the Medical Library. 		<ul style="list-style-type: none"> • The Departments of Physical Therapy and Work Therapy were established in the School of Allied Medical Sciences.
	10	<ul style="list-style-type: none"> • Information Center was established (Electric Computer Center was discontinued). 	10	
		<ul style="list-style-type: none"> • The Department of Dentistry, School of Dentistry was established. 		
		<ul style="list-style-type: none"> • The preparatory office for founding of the School of Dentistry was discontinued. 		

		<ul style="list-style-type: none"> • The Departments of Mechanical Engineering and Mechanical Engineering II of the Graduate School of Engineering Science were restructured to establish the Department of Mechanical Systems Engineering. 			<ul style="list-style-type: none"> • The Divisions of Physical Education and Home Economics were established in the Department of Curriculum & Teaching, Graduate School of Education.
	6	<ul style="list-style-type: none"> • 10 divisions of the Institute of Tropical Medicine were reorganized into three large ones. 			<ul style="list-style-type: none"> • The Department of Electrical Engineering and Computer Science of the School of Engineering was reorganized into the Department of Electrical and Electronic Engineering and the Department of Computer and Information Sciences.
1995.	4	<ul style="list-style-type: none"> • Graduate School of Economics was established. • The Advanced Course in the Faculty of Economics was discontinued. • The Department of Industrial Chemistry of the Graduate School of Engineering Science was renamed the Department of Applied Chemistry. 			<ul style="list-style-type: none"> • Center for Instrumental Analysis was established. (Center for Measurement Analysis was discontinued.)
1996.	5	<ul style="list-style-type: none"> • International Student Center was established. (Center for International Student Advising was discontinued.) 	1999.	4	<ul style="list-style-type: none"> • The Department of Clinical Pharmacy was established in the Graduate School of Pharmaceutical Sciences. • The position of Vice President was established. (Director of the Student Services Department was discontinued.) • The Student Affairs Department was established in accordance with the merger of the Administration Bureau with the Student Services Department (Student Services Department was discontinued).
1997.	4	<ul style="list-style-type: none"> • Atomic Bomb Disease Institute was established in the School of Medicine. (Atomic Bomb Disease Institute and Scientific Data Center for Atomic Bomb Disaster were discontinued.) • Marine Research Institute was established in the Faculty of Fisheries. (Fisheries laboratory was discontinued.) • Tropical Information Center was established in the Institute of Tropical Medicine. (The reference Room for the Tropical Medicine was discontinued.) 			<ul style="list-style-type: none"> • The Department of Infectious Research was established in the Graduate School of Medical Sciences.
	10	<ul style="list-style-type: none"> • Faculty of Environmental Studies was established. • Faculty of Liberal Arts was discontinued. • The Departments of Economics, Business, and Finance of the Faculty of Economics were restructured to establish the Department of General Economics. 	2000.	4	<ul style="list-style-type: none"> • Graduate School of Science and Technology was established. • Gene Research Center was established. • Junior College of Commerce was discontinued.
1998.	4	<ul style="list-style-type: none"> • The Elementary School Teacher Training Course, Lower Secondary School Teacher Training Course, Disabled Children's School Teacher Training Course, and Kindergarten Teacher Training Course of the Faculty of Education were reorganized into the Teacher Education Division and the Information Technology and Cultural Studies Division. 	2001.	4	<ul style="list-style-type: none"> • The Department of Marine Production and the Department of Marine Resource of the Graduate School of Marine Science and Engineering were reorganized into the Department of Marine Science and Technology and the Department of Material Science, respectively. • Center for Education Research and Training was established. (Center for Practical Education Research and Training was discontinued.)

		<ul style="list-style-type: none"> • Research Center for Tropical Infectious Diseases was established in the Institute of Tropical Medicine. (Tropical Disease Information Center was discontinued.) • One large and 31 small divisions of the School of Medical Sciences, School of Medicine were reorganized into six large ones. 			
	10	<ul style="list-style-type: none"> • The School of Health Sciences was established in the School of Medicine. 			
2002.	4	<ul style="list-style-type: none"> • Graduate School of Environmental Studies was established. • Graduate School of Biomedical Sciences was established. • Research and Development Center for Higher Education was established. • Admission Center was established. • Six large divisions of the School of Medical Sciences, School of Medicine were reorganized into four large ones. • 18 small divisions of the Department of Dentistry, School of Dentistry were reorganized into three large ones. • Four large divisions of the Department of Pharmaceutical Sciences, School of Pharmaceutical Sciences were reorganized into two large ones. 	12	<ul style="list-style-type: none"> • The Departments of Policies for the Human-Environmental Symbiosis (Master's course), Environmental Conservation and Planning (Master's course), and Environmental Science (Doctoral course) were established in the Graduate School of Science and Technology. • The Diploma Course in the Faculty of Fisheries was discontinued. • Intellectual Property Center was established. • Information Media Center was established. (Information Science Center was discontinued) • Joint Research Center was established. (Joint Research Center, Center for Instrumental Analysis, and Environmental Protection Center were discontinued.) 	
		<ul style="list-style-type: none"> • Atomic Bomb Disease Institute and the Medicinal Plant Garden were transferred from the School of Medicine to the Graduate School of Biomedical Sciences. • Center for Frontier Life Sciences was established. (Radioisotope Research Center, Gene Research Center, and Biomedical Research Center were discontinued.) 	2005.	4	<ul style="list-style-type: none"> • The Headquarters for Planning and Evaluation was established. • Center for International Collaborative Research was established. • Institute for East China Sea Research was established. (Marine Research Center, Faculty of Fisheries was discontinued.) • Center for Total Human Education and Child Welfare was established. (available for a limited time only) • School of Allied Medical Sciences was discontinued.
2003.	4	<ul style="list-style-type: none"> • University Hospital of Medicine and Dentistry were established (University Hospitals of the School of Medicine and the School of Dentistry were restructured). 	2006.	2	<ul style="list-style-type: none"> • The Department of Marine Science and Technology, Graduate School of Science and Technology was discontinued. • Master of Tropical Medicine and Master of Health Sciences were established in the Graduate School of Biomedical Sciences. • The Department of Pharmacy, School of Pharmaceutical Sciences was reorganized into Pharmacy (six-year program) and Pharmaceutical Sciences (four-year program).
	10			4	<ul style="list-style-type: none"> • Graduate School of Dentistry was discontinued.
2004.	4	<ul style="list-style-type: none"> • Nagasaki University was established by the Nagasaki University, National University Corporation under the National University Corporation Law. • The Department of Managerial Decision Making was established in the Graduate School of Economics (Doctoral course). 		5	<ul style="list-style-type: none"> • Nagasaki University Organization for Cooperation of Industry, University, and Government was established.
				7	
			2007.	2	<ul style="list-style-type: none"> • Graduate School of Pharmaceutical Sciences was discontinued.

	3	<ul style="list-style-type: none"> • Graduate School of Environmental Studies was discontinued. 			
2008.	4	<ul style="list-style-type: none"> • The Information Technology and Cultural Studies Division of the Faculty of Education was merged into the Teacher Education Division. • The Department of Teaching Skills Development and Practice (Master's Course) and the Department of Teaching Training and Practice (Professional Degree Program) were established in the Graduate School of Education. • Graduate School of International Health Development was established. • Center for Infectious Disease Research in Asia and Africa and Tropical Medicine Museum were established in the Institute of Tropical Medicine. Research Center for Tropical Infectious Diseases was discontinued. • Health Center was reorganized into the Center for Health and Community Medicine. 	2011.	4	<ul style="list-style-type: none"> • School of Engineering's seven Departments (Mechanical Systems Engineering, Electrical and Electronic Engineering, Computer and Information Sciences, Structural Engineering, Civil Engineering, Materials Science and Engineering, and Applied Chemistry) were restructured into one Department, Engineering. • Graduate School of Science and Technology was restructured to establish Graduate School of Engineering and Graduate School of Fisheries Science and Environmental Studies. • Institute of Tropical Medicine's three Departments were restructured into four Department • Institute for East China Sea Research was restructured to establish Institute for East China Sea Research affiliated with Graduate School of Fisheries Science and Environmental Studies. • Center for Total Human Education and Child Welfare was discontinued.
2009.	4	<ul style="list-style-type: none"> • University Hospital of Medicine and Dentistry was restructured and renamed University Hospital. 		6	<ul style="list-style-type: none"> • Center for Industry, University and Government Cooperation was established. (Organization for Cooperation of Industry, University, and Government, Intellectual Property Center Joint Research, Center and Education and Research Center for Lifelong Learning were discontinued.)
	10	<ul style="list-style-type: none"> • Center for Gender Equality was established. (available for a limited time only) 			
2010.	4	<ul style="list-style-type: none"> • Master's Course in Pharmaceutical Sciences was established in the Graduate School of Biomedical Sciences. • Center for Public Relations Strategy was established. • Center for International Collaborative Research Nagasaki University Tokyo Office was established. • Advanced Computing Center was established. 		12	<ul style="list-style-type: none"> • Research Promotion Section was established.
	11	<ul style="list-style-type: none"> • Center for International Collaborative Research Nagasaki University Tokyo Office was restructured to establish Nagasaki University Tokyo Office. 	2012.	1	<ul style="list-style-type: none"> • Center for Innovative Drug Discovery was established.
				4	<ul style="list-style-type: none"> • Master and Doctoral courses of Pharmaceutical Sciences were established in the Graduated School of Biomedical Sciences. • The Graduate School of Medical Sciences closed. • Center for Language Studies was established.
					<ul style="list-style-type: none"> • Research Center for Nuclear Weapons Abolition was established.
				12	<ul style="list-style-type: none"> • Center for Regional Educational Partnerships was established.
			2013.	4	<ul style="list-style-type: none"> • Atomic Bomb Disease Institute affiliated with Graduate School of Biomedical Sciences was restructured to establish Atomic Bomb Disease Institute attached to Nagasaki University.

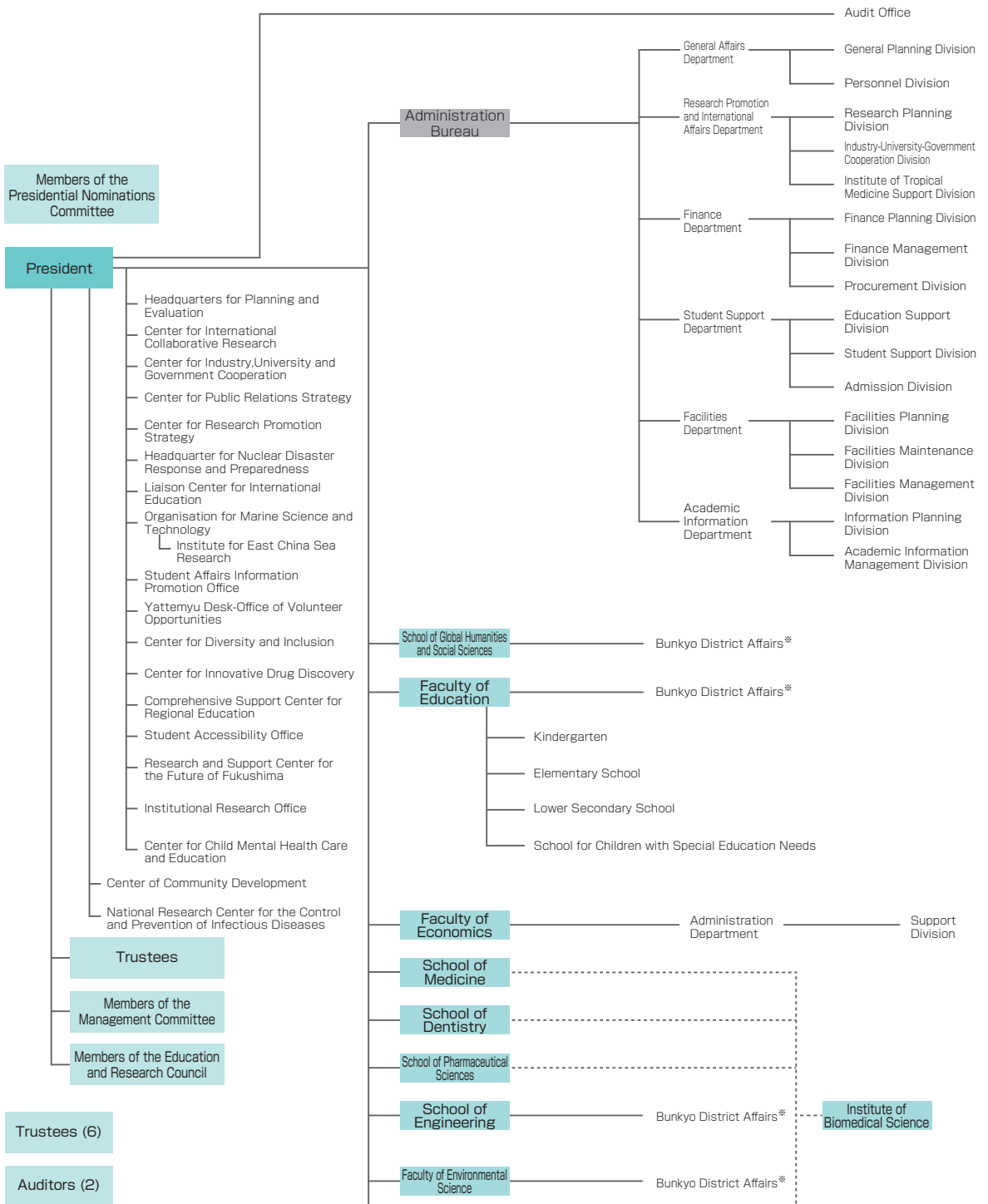
7	<ul style="list-style-type: none"> • Animal Research Center for Tropical Infectious was discontinued. 	10	<ul style="list-style-type: none"> • Center of Community Development was established.
8	<ul style="list-style-type: none"> • Student Accessibility Office was established. 	2016. 4	<ul style="list-style-type: none"> • Division of Disaster and Radiation Medical Sciences (Master's course) was established in the Graduate School of Biomedical Sciences.
10	<ul style="list-style-type: none"> • Liaison Center for International Education was established. (International Student Center was discontinued.) 		<ul style="list-style-type: none"> • Division of Advanced Preventive Medical Sciences (Doctoral course) was established in the Graduate School of Biomedical Sciences.
2014. 4	<ul style="list-style-type: none"> • Center for Educational Innovation was established. (Research and Development Center for Higher Education was integrated with Admission Center.) • Center for Research Promotion Strategy was established. (Research Promotion Section was discontinued.) • School of Global Humanities and Social Sciences was established. • Department of Teaching Training and Practice, Graduate School of Education was reorganized. (Department of Teaching Skills Development and Practice was unified into Department of Teaching Training and Practice.) • Center for Information and Communication Technology was established. (Information Media Center was discontinued.) • Research and Support Center for the Future of Fukushima was established. 		<ul style="list-style-type: none"> • Headquarter for Nuclear Disaster Response and Preparedness was established. • Organisation for Marine Science and Technology was established. • Institute for East China Sea Research on Graduate School of Fisheries and Environmental Sciences was restructured to Institute for East China Sea Research in Organisation for Marine Science and Technology.
		10	<ul style="list-style-type: none"> • Center for Child Mental Health Care and Education was established.
9	<ul style="list-style-type: none"> • Center for Promotion of Collaborative Research on Radiation and Environment Health Effects affiliated with Atomic Bomb Disease Institute was established. 	2017. 4	<ul style="list-style-type: none"> • Comprehensive Support Center for Regional Education was established. (Center for Regional Educational Partnerships was integrated with Faculty of Education Center for Education Research and Training.) • Institute of Biomedical Sciences was established. • National Research Center for the Control and Prevention of Infectious Diseases was Established.
2015. 4	<ul style="list-style-type: none"> • School of Tropical Medicine and Global Health (Master's course) was established. (Graduate School of Biomedical Sciences, Master of Tropical Medicine and Graduate School of International Health Development were restructured.) • Department of Environmental Science (Master's course) was established in the Graduate school of Fisheries and Environmental Sciences. (Department of Policies for Human-Environmental Symbiosis and Department of Environmental Conservation and Planning were restructured.) • Institutional Research Office was established. 	6	<ul style="list-style-type: none"> • Center for Advanced Preventive Medical Sciences was established in the Graduated School of Biomedical Sciences.
9	<ul style="list-style-type: none"> • Center for Gender Equality was restructured to Center for Diversity and Inclusion. 		

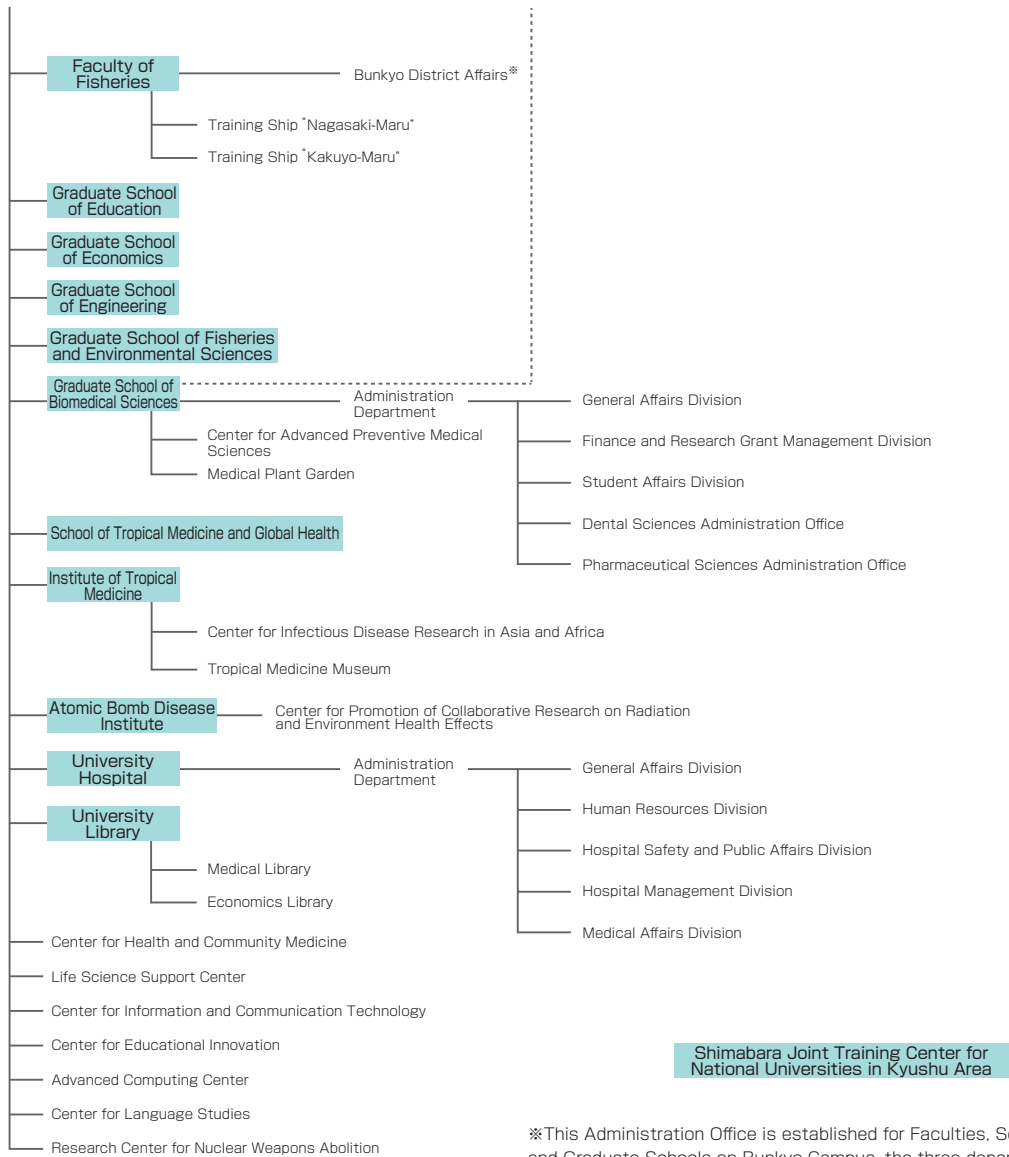


Organization

Organizational Chart

2017. 7. 1





※This Administration Office is established for Faculties, Schools and Graduate Schools on Bunkyo Campus, the three departments being General Affairs, Accounting, and Student Affairs.

Successive Presidents of Nagasaki University

1 st	Kiyoshi Takase	(June 29,1949 June 5,1952)
(Acting President)	Shingo Ikeda	(June 6,1952 November 17,1952)
2 nd	Kohei Koyano	(November 18,1952 November 17,1958)
3 rd	Seiichi Kitamura	(November 18,1958 November 17,1962)
4 th	Nariyuki Izumi	(November 18,1962 November 17,1966)
5 th	Toshiro Goto	(November 18,1966 April 3,1969)
(Acting President)	Michinori Kurihara	(April 4,1969 May 6,1969)
6 th	Masayuki Nakatsuka	(May 7,1969 July 31,1974)
(Acting President)	Masato Yasuda	(August 1,1974 October 10,1974)
7 th	Kanesaburo Gushima	(October 11,1974 October 10,1980)
8 th	Hideo Fukumi	(October 11,1980 October 10,1984)
9 th	Masato Yasuda	(October 11,1984 October 10,1988)
10 th	Hideo Tsuchiyama	(October 11,1988 October 10,1992)
11 th	Tetsuo Yokoyama	(October 11,1992 October 10,1998)
12 th	Takayoshi Ikeda	(October 11,1998 October 10,2002)
13 th	Hiroshi Saito	(October 11,2002 October 10,2008)
14 th	Shigeru Katamine	(October 11,2008 September 30,2017)
15 th	Shigeru Kohno	(October 1,2017 Present)

Board of Trustees 2017. 10. 1

Chairperson Shigeru Kohno	President
Hirotooshi Fukunaga	Trustee (General Affairs)
Kiyotaka Ido	Trustee (Finance)
Kazuhiro Tsukamoto	Trustee (Educational Affairs)
Isao Shimokawa	Trustee (Research and International Affairs)
Takashi Fujiki	Trustee (Regional Responsibility)
Hideaki Masuzaki	Trustee (Hospital)

Members of the Presidential Nominations Committee 2017. 10. 1

Chairperson Michitami Yano	Honorary Director National Hospital Organization Nagasaki Medical Center
Hirotooshi Fukunaga	Trustee
Kiyotaka Ido	Trustee
Hiromasa Okada	Dean, Faculty of Economics
Takashi Sawase	Dean, School of Dentistry
Naotaka Kuroda	Dean, School of Pharmaceutical Sciences
Yasuhiro Shimizu	Dean, Graduate School of Engineering
Takao Hotokebuchi	Unification Director of Saga Memorial Hospital
Noriko Araki	Principal of Nagasaki Prefectural Isahaya High School
Tomihisa Taue	Mayor of Nagasaki
Masatoshi Miyawaki	Chairperson, The Eighteenth Bank, Ltd.
Akira Takata	President, A and Live, Ltd

Members of the Management Committee 2017. 11. 1

Chairperson Shigeru Kohno	President
Hirotooshi Fukunaga	Trustee
Kiyotaka Ido	Trustee
Isao Shimokawa	Trustee
Hideaki Masuzaki	Trustee
Norihiro Nakamura	Dean, School of Global Humanities and Social Sciences
Hiromasa Okada	Dean, Faculty of Economics
Takeshi Nagayasu	Dean, School of Medicine
Katsuyasu Tachibana	Dean, Faculty of Fisheries
Yasuhiro Shimizu	Dean, Graduate School of Engineering
Hisayo Yasuda	Registered Foreign Lawyer
Takao Hotokebuchi	Unification Director of Saga Memorial Hospital
Izumi Kobayashi	Director, ANA Holdings Inc.
Ryoki Sugita	Special Adviser, Japan Center for Economic Research

Hodo Nakamura	Governor of Nagasaki
Tomihisa Taue	Mayor of Nagasaki
Noriko Araki	Principal of Nagasaki Prefectural Isahaya High School
Masatoshi Miyawaki	Chairperson, The Eighteenth Bank, Ltd.
Yoichiro Harada	Chief member of Mitsubishi Aircraft Corporation
Michitami Yano	Honorary Director National Hospital Organization Nagasaki Medical Center
Akira Takata	President, A and Live, Ltd

Members of the Education and Research Council

2017. 11. 1

Chairperson Shigeru Kohno	President
Hirotooshi Fukunaga	Trustee
Kazuhiro Tsukamoto	Trustee
Isao Shimokawa	Trustee
Takashi Fujiki	Trustee
Hideaki Masuzaki	Trustee Director, University Hospital
Kiyotaka Ido	Trustee Director-General, Administration Bureau
Norihiro Nakamura	Dean, School of Global Humanities and Social Sciences
Koichi Matsumoto	Dean, Faculty of Education
Hikomasa Okada	Dean, Faculty of Economics
Takeshi Nagayasu	Dean, School of Medicine
Takashi Sawase	Dean, School of Dentistry
Naotaka Kuroda	Dean, School of Pharmaceutical Sciences
Kimihiko Yamashita	Dean, Faculty of Environmental Studies
Katsuyasu Tachibana	Dean, Faculty of Fisheries
Yasuhiro Shimizu	Dean, Graduate School of Engineering
Tetsuji Mutou	Dean, Graduate School of Fisheries and Environmental Sciences
Osamu Onomura	Dean, Graduate School of Biomedical Sciences
Kiyoshi Kita	School of Tropical Medicine and Global Health
Kenji Hirayama	Dean, Institute of Tropical Medicine
Yasushi Miyazaki	Dean, Atomic Bomb Disease Institute
Akihiro Taimura	Director, University Library
Goro Tanaka	Dean, School of Health Sciences, School of Medicine
Tatsujiro Suzuki	Director, Research Center for Nuclear Weapons Abolition

Board Members and Faculty/Administrative Staff

2017. 11. 1

Board Members	
President	Shigeru Kohno
Trustee (General Affairs)	Hirotooshi Fukunaga
Trustee (Finance)	Kiyotaka Ido
Trustee (Educational Affairs)	Kazuhiro Tsukamoto
Trustee (Reserch and International Affairs)	Isao Shimokawa
Trustee (Regional Responsibility)	Takashi Fujiki
Trustee (Director, University Hospital)	Hideaki Masuzaki
Auditor	Toshinori Watanabe
Auditor (Part time)	Kiichiro Hiramatsu
Vice Presidents	
Accreditation	Hirotooshi Fukunaga
Educational Affairs	Kazuhiro Tsukamoto
Research Programs and International Affairs	Isao Shimokawa
Industry University Collaboration	Hiroshi Matsuda
Public Relations	Norio Fukao
Information Technology	Toru Kobayashi
Student Affairs	Takatsugu Akaishi
Admission Affairs	Yoshimasa Hoshino
Regional Education Collaboration	Norio Nakamura
Social Responsibility	Akira Tsujino
BSL-4 Facility Project	Eisuke Futamura
Life Science	Toshifumi Komori
International Exchange	Akihide Tada
Environment · Facilities	Tetsuo Harada
Diversity and Inclusion	Masako Ito
Marine Research	Shigenobu Takeda
Special Aide to the President	
National Research Center for the Control and Prevention of Infectious Diseases	Susumu Shirabe
Fukushima Project and Nuclear disaster	Shunichi Yamashita
Headquarters for Planning and Evaluation	
Director	Shigeru Kohno
Center for International Collaborative Research	
Director	Isao Shimokawa
Center for Industry, University and Government Cooperation	
Director	Hiroshi Matsuda
Center for Public Relations Strategy	
Director	Norio Fukao
Center for Research Promotion Strategy	
Director	Isao Shimokawa
Headquarter for Nuclear Disaster Response and Preparedness	
Director	Shunichi Yamashita

Liaison Center for International Education	
Director	Isao Shimokawa
Director, Liaison Center for International Education Administration Office	Takeshi Tokutome
Organisation for Marine Science and Technology	
Director	Shigenobu Takeda
Director, Institute for East China Sea Research	Kiyoshi Soyano
Student Affairs Information Promotion Office	
Director	Kazuhiro Tsukamoto
Yattemyu Desk-Office of Volunteer Opportunities	
Director	Takatsugu Akaishi
Center for Diversity and Inclusion	
Director	Masako Ito
Center for Innovative Drug Discovery	
Director	Toshifumi Komori
Comprehensive Support Center for Regional Education	
Director	Norio Nakamura
Student Accessibility Office	
Director	Kazuhiro Tsukamoto
Research and Support Center for the Future of Fukushima	
Director	Shunichi Yamashita
Institutional Research office	
Director	Hirotooshi Fukunaga
Center for Child Mental Health Care and Education	
Director	Susumu Shirabe
Center of Community Development	
Director	Takashi Fujiki
National Research Center for the Control and Prevention of Infectious Diseases	
Head	Hiroshi Kida
Director, BSL-4 Facility Project Office	Jiro Yasuda
Director, General Affairs Division	Koichi Higuchi
Audit Office	
Director	Tokinari Shioyoke

Administration Bureau

Director-General, Administration Bureau	Kiyotaka Ido
Director, General Affairs Department	Yasuhiro Watanabe
Director, General Planning Division	Masaru Abe
Personnel Division	Yasushi Asada
Director, Research Promotion and International Affairs Department	Masahiko Yamasaki
Director, Research Planning Division	Tadakazu Takayanagi
Industry-University-Government Cooperation Division	Hiroji Kuzushima
Director, Institute of Tropical Medicine Support Division	Makoto Matsuo
Director, Finance Department	Shingo Nishida
Director, Finance Division	Koichi Higuchi
Director, Accounting Division	Osamu Takahira
Director, Procurement Division	Kazunori Tsuchihashi
Director, Student Support Department	Kiyoshi Tsuge
Director, Education Support Division	Hiroto Tanaka
Director, Student Support Division	Kazuya Takaku
Director, Admission Division	Yasuyuki Honda
Director, Facilities Department	Tatsuyuki Tsutsumi
Director, Facilities Planning Division	Masayoshi Okano
Director, Facilities Maintenance Division	Toyoyuki Andou
Director, Environmental Maintenance Division	Koji Yamaguchi
Director, Academic Information Department	Shinichi Mitsumoto
Director, Information Planning Division	Syoichi Kiyokawa
Director, Academic Information Management Division	Hiroto Kondo

Faculties and Schools

Bunkyo District Affairs	
Director, Bunkyo District Affairs	Yasuhiro Watanabe
Director, General Affairs Division	Masaru Abe
Director, Accounting Division	Hidehiko Hamasaki
Director, Student Affairs Division	Takafumi Matsuo

School of Global Humanities and Social Science	
Dean, School of Global Humanities and Social Sciences	Norihiro Nakamura

Faculty of Education	
Dean, Faculty of Education	Koichi Matsumoto
Principal, Kindergarten	Miki Omachi
Principal, Elementary School	Satoshi Tomino
Principal, Lower Secondary School	Hiroshi Mori
Principal, School for Children with Special Education Needs	Tsuneto Sato

Faculty of Economics	
Dean, Faculty of Economics	Hiromasa Okada
Director, Faculty of Economics Support Division	Ryoji Sato

School of Medicine	
Dean, School of Medicine	Takeshi Nagayasu

School Dentistry	
Dean, School of Dentistry	Takashi Sawase

School of Pharmaceutical Sciences	
Dean, School of Pharmaceutical Sciences	Naotaka Kuroda

School of Engineering	
Dean, School of Engineering	Yasuhiro Shimizu

Faculty of Environmental Science	
Dean, Faculty of Environmental Science	Kimihiro Yamashita

Fisheries	
Dean, Faculty of Fisheries	Katsuyasu Tachibana
Captain, Training Ship "Nagasaki-Marui"	Yasuhiro Morii
Captain, Training Ship "Kakuyo-Marui"	Takashi Aoshima

Graduate Schools

Dean, Graduate School of Education	Koichi Matsumoto
------------------------------------	------------------

Dean, Graduate School of Economics	Hiromasa Okada
------------------------------------	----------------

Dean, Graduate School of Engineering	Yasuhiro Shimizu
--------------------------------------	------------------

Dean, Graduate School of Fisheries and Environmental Science	Tetsuji Mutou
--------------------------------------------------------------	---------------

Dean, Graduate School of Science and Technology	Yasuhiro Shimizu
-------------------------------------------------	------------------

Dean, Graduate School of Biomedical Sciences	Osamu Onomura
----------------------------------------------	---------------

Director, Administration Department	Shigeru Chigita
-------------------------------------	-----------------

Director, General Affairs Division	Hisayuki Fukahori
------------------------------------	-------------------

Director, Finance and Research Grant Management Division	Masanori Matsuo
----------------------------------------------------------	-----------------

Director, Student Affairs Division	Mika Moriyama
------------------------------------	---------------

Director, Dental Sciences Administration Office	Toshinobu Ikeda
-------------------------------------------------	-----------------

Director, Pharmaceutical Sciences Administration Office	Eiji Koga
---------------------------------------------------------	-----------

Director, Center for Advanced Preventive Medical Sciences	Atsushi Kawakami
-----------------------------------------------------------	------------------

Director, Medicinal Plant Garden	Naotaka Kuroda
----------------------------------	----------------

Dean, Graduate School of International Health Development	Kazuhiko Moji
-----------------------------------------------------------	---------------

School of Tropical Medicine and Global Health	Kiyoshi Kita
-----------------------------------------------	--------------

University Research Institutes

Dean, Institute of Tropical Medicine	Kenji Hirayama
--------------------------------------	----------------

Director, Center for Infectious Disease Research in Asia and Africa	Kenji Hirayama
---------------------------------------------------------------------	----------------

Director, Tropical Medicine Museum	Junko Okumura
------------------------------------	---------------

Dean, Atomic Bomb Disease Institute	Yasushi Miyazaki
-------------------------------------	------------------

Director, Center for Promotion of Collaborative Research on Radiation and Environment Health Effects	Yasushi Miyazaki
------------------------------------------------------------------------------------------------------	------------------

University Hospital

Director, University Hospital	Hideaki Masuzaki
-------------------------------	------------------

Director, Administration Department	Hiroshi Hamamura
-------------------------------------	------------------

Director, General Affairs Division	Yusuke Ueda
------------------------------------	-------------

Director, Human Resources Division	Masami Kondo
------------------------------------	--------------

Director, Hospital Safety and Public Affairs Division	Yoshimasa Yoshida
-------------------------------------------------------	-------------------

Director, Hospital Management Division	Hidefumi Honda
----------------------------------------	----------------

Director, Medical Affairs Division	Takahiro Yoshii
------------------------------------	-----------------

Director, Pharmaceutical Department	Hitoshi Sasaki
-------------------------------------	----------------

Director, Nursing Department	Mieko Sadakata
------------------------------	----------------

University Library

Director, University Library	Akihiro Taimura
Director, Medical Library	Katsuyuki Yui
Director, Economics Library	Atsuyuki Fukaura

Center for Health and Community Medicine

Director, Center for Health and Community Medicine	Susumu Shirabe
----------------------------------------------------	----------------

Faculty-affiliated Institutes for Education and Research

Director, Center for Frontier Life Sciences	Toshifumi Komori
Director, Center for Information and Communication Technology	Toru Kobayashi
Director, Center for Educational Innovation	Kazuhiro Tsukamoto
Director, Advanced Computing Center	Toru Kobayashi
Director, Center for Language Studies	Toshiaki Inada
Director, Research Center for Nuclear Weapons Abolition	Tatsujiro Suzuki

Institute of Biomedical Sciences

Dean	Osamu Onomura
------	---------------

Shimabara Joint Training Center for National Universities in Kyushu Area

Director	Takatsugu Akaishi
----------	-------------------

Number of Board Members and Faculty/Administrative Staff

2017. 5. 1

Board Members, etc.	Board Members			Faculty Staff							Sub Total	Administrative Staff	Total		
	President	Trustees	Auditors	Vice Presidents	Special Aide to the President	Professors	Associate Professors	Senior Assistant Professors	Assistant Professors	Research Associates				School Teachers	
Center for International Collaborative Research							1		2			3	15	18	
Center for Industry, University and Government Cooperation						1	3		3			7	6	13	
Center for Public Relations Strategy						1	1					2	4	6	
Center for Research Promotion Strategy													3	3	
Headquarter for Nuclear Disaster Response and Preparedness													4	4	
Liaison Center for International Education						2	5					7	17	24	
Organisation for Marine Science and Technology						5	1		3			9		9	
Center for Diversity and Inclusion						1			1			2	3	5	
Center for Innovative Drug Discovery						1						1		1	
Comprehensive Support Center for Regional Education						1	1					2		2	
Student Accessibility Office									1			1	2	3	
Institutional Research office													1	1	
Center of Community Development									1			1	6	7	
National Research Center for the Control and Prevention of Infectious Diseases						1	1					2	8	10	
Audit Office													2	2	
Administration Bureau	1	6	(1)	1	[15]	[2]						(1) [17] 8	215	(1) [17] 223	
Bunkyo District Affairs													69	69	
School of Global Humanities and Social Sciences						12	14					26	9	35	
Faculty of Education						17	31		3			51	1	52	
Kindergarten											8	8		8	
Elementary School											30	30		30	
Lower Secondary School											25	25		25	
School for Children with Special Education Needs											27	27		27	
Faculty of Economics						22	27	2	1			52	15	67	
Faculty of Fisheries						4						4		4	
Training Ship "Kakuyo-Maru"							2	1				3	12	15	
Training Ship "Nagasaki-Maru"						1	1		1	2		5	18	23	
Graduate School of Education						12	11		1			24		24	
Graduate School of Engineering						38	45		25	1		109	43	152	
Graduate School of Fisheries and Environmental Sciences						42	34		8			84		84	
Faculty of Medicine													1	1	
Graduate School of Biomedical Sciences													78	78	
School of Tropical Medicine and Global Health						4	1		5			10	1	11	
Institute of Tropical Medicine						11	8	3	33			55	2	57	
Center for Infectious Disease Research in Asia and Africa						2			3			5	1	6	
Tropical Medicine Museum						1						1	1	2	
Atomic Bomb Disease Institute						10	5	1	17			33	2	35	
Center for promotion of Collaborative Research on Radiation and Environment Health Effects						1	1	1	3			6	1	7	
University Hospital						9	20	60	184			273	1,337	1,610	
Center for Health and Community Medicine						1	3		2			6	10	16	
Center for Frontier Life Sciences						1	1		2			4	5	9	
Center for Information and Communication Technology						1	4					5		5	
Center for Educational Innovation						3	2		3			8	1	9	
Center for Language Studies						8	1	1	6			16		16	
Research Center for Nuclear Weapons Abolition						3	1					4		4	
Institute of Biomedical Sciences						94	79	24	147			344		344	
Total	1	6	(1)	1	[15]	[2]	310	304	92	456	3	90	(1) [17] 1,263	1,893	(1) [17] 3,156

· Auditor (1) is a part-time staff member, and is excluded from the total. Vice Presidents [14] and Special Aide to the President [2] double as Faculty members or Trustees, and indicates the number of them included in count.

· The Faculty Staff of the Faculty of Environmental Science or the Faculty of Fisheries belongs to the Graduate school of Fisheries and Environmental Sciences. The Faculty Staff of the School of Medicine, the School of Dentistry, the School of Pharmaceutical Sciences or the Graduate School of Biomedical Sciences belongs to the Institute of Biomedical Sciences.



Education and Research

Faculties and Schools

Faculty	Divisions	Departments
School of Global Humanities and Social Sciences 1 Department 4 Programs	Department of Global Humanities and Social Sciences	Global Society Program Social Dynamics Program Culture and Communication Program Dutch Studies Program
Faculty of Education 1 Division 6 Departments	Teacher Education Division	Department of Intercultural Studies Department of Natural Science Department of Art Expression Department of Life and Health Department of Education and Psychology Department of Elementary Education
Faculty of Economics 1 Department 6 Divisions	General Economics	Economics and Econometrics Regional Economics and Policy Economic Cooperation & International Communication Financial Systems Corporate Behavior & Decision Making Business Management & Accounting
School of Medicine 2 Departments 7 Divisions	School of Medical Sciences	Structure-Function-Metabolism Therapeutic Medicine
	School of Health Sciences	Pathophysiologic Analysis Preventive Medicine Nursing Occupational Therapy Physical Therapy
School of Dentistry 1 Department 3 Divisions	Dentistry	Oral and Maxillofacial Life Sciences Oral and Maxillofacial Environmental Sciences Oral and Maxillofacial Regenerative Medical Sciences
School of Pharmaceutical Sciences 2 Departments 4 Divisions	Pharmacy	Basic Pharmacy Medical Pharmacy
	Pharmaceutical Sciences	Basic Pharmaceutical Sciences Applied Pharmaceutical Sciences
School of Engineering 1 Department 6 Programs	Engineering	Mechanical Engineering Program Electrical and Electronic Engineering Program Computer and Information Science Program Structural Engineering Program Civil and Environmental Engineering Program Chemistry and Materials Engineering Program
Faculty of Environmental Science 1 Department 2 Divisions	Environmental Science	Human and Social Environment Environmental Conservation and Planning
Faculty of Fisheries 1 Department 4 Divisions	Fisheries	Systematic Fisheries Science Marine Biology and Dynamics Marine Life Science and Biochemistry Marine Material Science

Graduate Schools

Graduate School	Course	Departments
Graduate School of Education	Professional Degree Program	Department of Teacher Training and Practice
Graduate School of Economics	Master's Course	Policy Studies in Economics and Management
	Doctoral Course	Managerial Decision Making
Graduate School of Engineering	Master's Degree	Department of Advanced Engineering
	Doctoral Degree (3 Year Program)	Department of Science and Technology
	Doctoral Degree (5 Year Program)	Department of Advanced Technology and Science for Sustainable Development
Graduate School of Fisheries and Environmental Sciences	Master's Program	Department of Fisheries Science Department of Environmental Science
	Doctoral Program	Department of Environment and Fisheries Resources
	Doctoral Program (5-Year Doctoral Program)	Department of Marine Science
Graduate School of Science and Technology	Doctoral Course	Systems Science Marine Science and Technology Environmental Science
Graduate School of Biomedical Sciences	Master's Course	Health Sciences Disaster and Radiation Medical Sciences
	Doctoral Course	Medical and Dental Sciences Infection Research Life Sciences and Radiation Research Advanced Preventive Medical Sciences
	Master's Course	Pharmaceutical Sciences
	Doctoral Course	Pharmaceutical Sciences
Graduate School of International Health Development	Master's Course	International Health Development
School of Tropical Medicine and Global Health	Master's Course	Department of Global Health

※The Graduate School of Science and Technology, and Graduate school of International Health Development stopped accepting applicants.

Academic Calendar

4 April	3 4	First Day of Academic Year Entrance Ceremony	10 October	
5 May	31	University Foundation Day	11 November	3 ~ 4 School Festival
6 June			12 December	12/26 ~ 1/3 Winter Break
7 July			1 January	
8 August	8/11 ~ 9/28	Summer Break	2 February	
9 September	29	First Day of Second Semester	3 March	3/21 ~ 4/2 Spring Break 23 Commencement Ceremony 30 Last Day of Academic Year



University Facilities

University Research Institute: Institute of Tropical Medicine

Research Fields and Departments	Mission Statements
Microbiology and Parasitology Virology, Emerging Infectious Diseases, Bacteriology, Protozoology, Parasitology, Molecular Epidemiology Host and Vector Biology Immunogenetics, Host-Defense Biochemistry, Pathology, Preventive Medicine and AIDS Research Public and Environmental Health Eco-epidemiology, International Health, Global Health Development Policy Sciences, Vector Ecology and Environment Clinical Medicine and Research Clinical Medicine, Pediatric Infectious Diseases, Clinical Product Development	<ol style="list-style-type: none"> 1. Spear-head research in tropical medicine and international health 2. Global contribution through disease control and health promotion in the tropics by applying the fruits of the research 3. Cultivation of researchers and specialists in the above fields

University Research Institute: Atomic Bomb Disease Institute

Research Fields (Departments)	Mission
Radiaton Risk Control Unit Radiation Biology and Protection, Health Risk Control, Radiation Molecular Epidemiology, Global Health, Medicine and Welfare, Radiation Medical Sciences Cellular Function Analysis Unit Stem Cell Biology, Molecular Medicine Genomic Function Analysis Unit Human Genetics, Genome Repair Atomic Bomb Disease and Hibakusha Medicine Unit Hematology, Tumor and Diagnostic Pathology, Radioisotope Medicine Center for Promotion of Collaborative Research on Radiation and Environment Health Effects Division of Strategic Collaborative Research Division of Scientific Data Registry Biostatistics Section Tissue and Histopathology Section	Radiation health risk analysis and communication Basic research for radiation effects on cellular levels Basic research for radiation effects on DNA levels Diagnosis and clinical management for radiation-induced disorders in atomic bomb survivors Promotion of collaborative study for radiation research

University Library

Holdings

2017. 4 . 1

Libraries	Books			Periodicals		
	Japanese & Chinese	Others	Total	Japanese	Others	Total
Central Library	447,231	138,893	586,124	11,323	3,399	14,722
Medical Library	81,183	72,774	153,957	3,870	3,203	7,073
Economics Library	192,753	83,445	276,198	3,841	1,145	4,986
Total	721,167	295,112	1,016,279	※17,489	※7,343	※24,832

※The identical periodicals are excepted from total amount of 3 libraries.

Use of Library (FY 2016)

Libraries	Visitors, etc.	University Staff	Students	Others	Total
Central Library	Visitors	8,917	435,862	13,477	458,256
	Volumes lent	6,227	44,605	2,144	52,976
Medical Library	Visitors	8,419	140,532	3,322	152,273
	Volumes lent	2,056	10,471	320	12,847
Economics Library	Visitors	4,550	51,948	1,740	58,238
	Volumes lent	1,310	7,802	253	9,365
Total	Visitors	21,886	628,342	18,539	668,767
	Volumes lent	9,593	62,878	2,717	75,188

University Hospital (FY 2016)

Number of Patients by Department

Departments, etc.	Patients	Inpatients		Outpatients	
		Total Number of Patients	Daily Average of Patients	Total Number of Patients	Daily Average of Patients
Endocrinology and Metabolism		2,985	8.2	11,263	46.3
Gastroenterology and Hepatology		21,477	58.8	22,006	90.6
Immunology and Rheumatology		5,466	15.0	12,593	51.8
Neurology		5,268	14.4	6,992	28.8
Respiratory Medicine		16,659	45.6	16,177	66.6
Nephrology		3,954	10.8	9,175	37.8
Cardiovascular Medicine		15,358	42.1	15,457	63.6
Hematology		15,280	41.8	10,067	41.4
Infectious Diseases		0	0.0	595	2.4
General Thoracic Surgery		4,527	12.4	2,756	11.3
Digestive Surgery I		10,267	28.1	5,210	21.4
Digestive Surgery II		16,916	46.3	8,673	35.7
Urology		10,425	28.6	18,494	76.1
Cardiovascular Surgery		10,248	28.1	3,962	16.3
Breast and Endocrine Surgery		2,633	7.2	7,505	30.9
Neurosurgery		8,911	24.4	10,381	42.7
Ophthalmology		10,401	28.5	22,185	91.3
Otolaryngology-Head and Neck Surgery		10,472	28.7	13,380	55.1
Dermatology and Allergology		5,656	15.5	15,666	64.5
Plastic and Reconstructive Surgery		5,571	15.3	5,262	21.6
Orthopedic Surgery		14,523	39.8	14,140	58.2
Pediatrics		13,614	37.3	16,039	66.0

Departments, etc.	Patients	Inpatients		Outpatients	
		Total Number of Patients	Daily Average of Patients	Total Number of Patients	Daily Average of Patients
Pediatric Surgery		3,436	9.4	4,555	18.7
Obstetrics and Gynecology		18,499	50.7	18,074	74.4
Neuropsychiatry		11,289	30.9	18,082	74.4
Radiology		3,290	9.0	6,681	27.5
Anesthesiology		30	0.1	9,201	37.9
General Medicine		727	2.0	3,248	13.4
International Hibakusha Medical Center		14	0.1	430	1.8
Department of Emergency Center		16,781	46.0	7,697	31.7
Department of Metabolism / Diabetes and Clinical Nutrition		0	0.0	2,062	12.2
Subtotal		264,677	725.1	318,008	1,312.4

Departments, etc.	Patients	Inpatients		Outpatients	
		Total Number of Patients	Daily Average of Patients	Total Number of Patients	Daily Average of Patients
Department of Conservative and Prosthetic Dentistry				43,145	177.5
Department of Pediatric Dentistry				4,106	16.9
Department of Orthodontics				7,649	31.5
Department of Oral and Maxillofacial Surgery		6,543	17.9	17,079	70.3
Department of Dental Anesthesiology		134	0.3	1,615	6.7
Department of Special Care Dentistry				5,130	21.1
Clinic for Oral Health Care and Dysphagia Rehabilitation				2,986	12.3
Center for Oral and Maxillofacial Implants		16	0.1	4,332	17.8
Department of General Dentistry				8,360	34.4
Oral Care Center				8,327	34.3
Subtotal		6,693	18.3	102,729	422.8
Total		271,370	743.5	420,737	1,735.1

Number of days hospitalized=365 days, Number of days open for practice=243 days

Schools and Kindergarten Affiliated with the Faculty of Education

Affiliated Schools

2017. 5 . 1

Schools	Type of Class	Grade		Number of Classes	Admission Capacity	Enrollment Capacity	Enrollment
Kindergarten		3-year-olds	3-year program	1	20	20	24
		4-year-olds	2-year program	2	40	60	28
			3-year program		20		22
		5-year-olds	2-year program	2	40	60	34
			3-year program		20		21
Total				5		140	129
Elementary School	Ordinary Class		1	3	30	90	90
			2	3	30	90	91
			3	3	30	90	90
			4	3	30	90	85
			5	3	30	90	85
			6	3	30	90	87
	Combined Class		1	1	16	16	8
			2				8
			3				8
			4				8
			5				8
			6				7
	Total				21		588
Lower Secondary School	Ordinary Class		1	4	35	140	143
			2	4	35	140	141
			3	4	35	140	141
	Total				12		420
School for Children with Special Education Needs	Ordinary Class (Combined class of successive grades)	Elementary School	1	1	6	18	3
			2				1
			3				2
			4				2
			5				2
			6				1
	Ordinary Class	Lower Secondary School	1	1	6	18	5
			2	1	6		6
			3	1	6		6
	Ordinary Class	Secondary School	1	1	8	24	6
			2	1	8		7
3			1	8	8		
Total				9		60	49

Faculty-affiliated Institutes for Education and Research

Faculty of Fisheries	Graduate School of Biomedical Sciences
Training Ship Nagasaki-maru	Center for Advanced Preventive Medical Sciences
Training Ship Kakuyo-maru	Medicinal Plant Garden
Institute of Tropical Medicine	Atomic Bomb Disease Institute
Center for Infectious Disease Research in Asia and Africa	Center for Promotion of Collaborative Research on Radiation and Environment Health Effects
Tropical Medicine Museum	

Center for Health and Community Medicine

Staffing as of 2017. 5. 1

Director	Professor	Associate Professor	Assistant Professor	Public Health Nurse	Counsellor	Administrative Staff	Total	University doctors, by speciality	
								Obstetrics and Gynecology	Dentistry
(1)	(1)	3 (1)	2 (1)	3	5	2	15 (4)	1	1

Notes: Consultation days at Bunkyo campus office: Monday through Friday
Numbers in brackets denote shared staff, and are excluded from the total.

University Institutes for Education and Research

Organisation for Marine Science and Technology	Student Affairs Information Promotion Office
Institute for East China Sea Research	Yattemyu Desk (Office of Volunteer Opportunities)
Life Science Support Center	Center for Diversity and Inclusion
Radioisotope Research Center	Center for Innovative Drug Discovery
Biomedical Research Center	Comprehensive Support Center for Regional Education
Gene Research Center	Student Accessibility Office
Center for Information and Communication Technology	Research and Support Center for the Future of Fukushima
Center for Educational Innovation	Institutional Research Office
Advanced Computing Center	Center for Child Mental Health Care and Education
Center for Language Studies	
Research Center for Nuclear Weapons Abolition	

Stations of Educational Research Projects

Station	Location	Purpose of Establishment
Nagasaki University Africa Research Station Kisumu Research Site	Nairobi, Republic of Kenya Kisumu, Republic of Kenya	Formulation of Educational and Research Strategies, and Support for International Collaborative Research and Educational Activities in Africa.
Kenya Research Station Mbita Research Site Kwale Research Site Busia Research Site	Nairobi, Republic of Kenya (in the Kenya Medical Research Institute (KEMRI)) Mbita, Republic of Kenya Kwale, Republic of Kenya Busia, Republic of Kenya	Promotion of researches on Tropical Diseases and Emerging and Re-emerging Infectious Diseases.
Vietnam Research Station (VRS) Nha Trang Branch	Hanoi City, Socialist Republic of Vietnam (in National Institute of Hygiene and Epidemiology (NIHE)) Nha Trang City, Khanh Hoa Province, Socialist Republic of Vietnam (in the Khanh Hoa Province Health Department)	
Representative Office for Molecular Epidemiological Studies Around Chernobyl	Minsk City, the Republic of Belarus (in Belarussian Medical Academy of Post-Graduate Education)	To promote programs on Global Strategic Center for Radiation Health Risk Control.
Nagasaki University-Kawauchi Village Reconstruction Promotion Base	Kawauchi Village, Fukushima Prefecture(in Kawauchi Village Office)	To promote projects based on the agreement on comprehensive cooperation between Nagasaki University and Kawauchi Village.
Medicine in Goto Islands and Remote Areas Project Station	Goto City, Nagasaki (in Nagasaki Goto Chuoh Hospital)	Promotion of Projects under the Agreement on Establishment of Endowed Course(Unit of Island and Community Medicine).
Innovative Preventive Medicine Education and Research Station	Goto City, Nagasaki (in Fukue General Public Health and Welfare Center)	Promotion of Cohort Studies in Innovative Prevention of Medical Science and Educational Activities.
Research Center for Comprehensive Community Care Education	Nagasaki City, Nagasaki (in Nagasaki Harbor Medical Center City Hospital)	Promotion of Research and Education for Geriatrics and Comprehensive Community Care System.
Hirado Clinical Education Project Station	Hirado City, Nagasaki (in National Health Insurance Hirado Municipal Hospital)	Promotion of Program for Resident Education and Revitalization of Rural Community Hospitals.
Emergency Medical Education Center	Nagasaki City, Nagasaki (in Saiseikai Nagasaki Hospital and Nagasaki Kinen Hospital)	Promotion for Encouraging and Ensnconcing Medical Professionals in Nagasaki.

International Liaison Offices

Station	Location	Purpose of Establishment
Nagasaki University International Liaison Office	Leiden, Kingdom of the Netherlands (in the premises of Japan Museum Sieboldhuis)	Promotion of academic and cultural exchange between Nagasaki University and other institutions of higher education in the Netherlands
Liaison Office of Nagasaki University and Jeju National University	Jeju, Republic of Korea (in the premises of Jeju National University)	Promotion of collaborative research and student exchange with Jeju National University
Liaison Office of Nagasaki University and Shanghai Ocean University	Shanghai, People's Republic of China (in the premises of Shanghai Ocean University)	Promotion of collaborative research and sutudent exchange with Shanghai Ocean University

Station	Location	Purpose of Establishment
Liaison Office of Nagasaki University and National Taiwan Ocean University	Keelung, Taiwan (in the premises of National Taiwan Ocean University)	Promotion of collaborative research and student exchange with National Taiwan Ocean University
Liaison Office of Nagasaki University and Can Tho University	Can Tho, Socialist Republic of Viet Nam (in the premises of Can Tho University)	Promotion of collaborative research and student exchange with Can Tho University
Liaison Office of Nagasaki University and Centre d'étude sur l'Evaluation de la Protection dans le domaine Nucleaire (CEPN)	Fontenay-aux-Roses, French Republic (in the premises of CEPN)	Promotion of collaborative research with CEPN



Distinctive Education and Research

Distinctive Research

Nagasaki University Priority Research Subject Project Based on Medium-term Goals and Plans

FY	Title of the research project	Principal Investigator (Department)
FY 2016~FY 2021	Innovative Materials Science for Next-generation Energy-related Technologies	MORIGUCHI Isamu (Graduate school of Engineering)
	Clarification of marine ecosystem functions and their utilization -an adaptation of tiger pufferfish, Takifugu rubripes to future ocean change-	YAMAGUCHI Atsuko (Graduate School of Fisheries Science and Environmental Studies)
	Platform development for translational research of personalized cancer therapy	IKEDA Hiroaki (Institute of Biomedical Sciences)
FY 2017~FY 2021	Development of regenerative therapy and its minimally invasive delivering devise for digestive diseases	EGUCHI Susumu (Institute of Biomedical Sciences)
	Promotion of therapeutic innovation through formation of the center for infectious diseases and radiation-induced injuries	TAKEDA Kohsuke (Institute of Biomedical Sciences)
	Establishing Transdisciplinary Research Platform on "Risk Society" in Humanities and Social Sciences	TAKIZAWA Katsuhiko (School of Global Humanities and Social Sciences)
	Interdisciplinary study on regional water-sustainable society	NAKAGAWA Kei (Graduate School of Fisheries Science and Environmental Studies)

Funds for the Development of Human Resources in Science and Technology of the Ministry of Education, Culture, Sports, Science and Technology (MEXT)

FY	Program
FY 2011~FY 2017	Improvement of Research Environment for Young Researchers

Distinctive Education

Program for Leading Graduate Schools

Title	Managing Body	FY
Program for Nurturing Global Leaders in Tropical and Emerging Communicable Diseases	Graduate School of Biomedical Sciences, Institute of Tropical Medicine	FY 2012~FY 2018

New Paradigms—Establishing Centers for Fostering Medical Researchers of the Future

Title	Managing Body	FY
(A) Fostering Human Resources for Producing Medical Innovation Medical-Engineering Hybrid Professional Development Program	Graduate School of Biomedical Sciences	FY 2013~FY 2017
(B) Doctors for Communities (DOCS) –Fostering Research-Minded General Physicians Innovative development of human resources for comprehensive community care (Nagasaki University <Representative university> Nagasaki Junshin Catholic University <Partner university>)	School of Medicine	FY 2013~FY 2017

Acceleration Program for University Education Rebuilding

Title	Managing Body	FY
Integrated type (Theme I:Active learning / Theme II: Visualization and assessment of student learning outcomes)	Entire University	FY 2014~FY 2018

Problem-Solving Oriented Training Program for Advanced Medical Personnel

Title	Managing Body	FY
Six National University Consortium in Liver Transplant Professionals Training Program (Kumamoto University <Representative university> Nagasaki University and five other universities <Partner university>)	University Hospital	FY 2014~FY 2018
The COE program to adapt dental education for a healthy society with longevity (Okayama University <Representative university>Nagasaki University and nine other universities <Partner university>)	School of Dentistry	FY 2014~FY 2018
Training Program for Advanced Rehabilitation Professionals	School of Health Sciences	FY 2014~FY 2018
Radiation Health Risk Science Human Resource Development Program (Nagasaki University <Representative university> Hiroshima University and one other University <Partner university>)	School of Medicine	FY 2016~FY 2020

Center of Community Plus

Title	Managing Body	FY
Revitalization of Nagasaki by the young challengers studying in Nagasaki (Nagasaki University <Representative university> University of Nagasaki and three other universities <Partner university>)	Entire University	FY 2015~FY 2019

Inter-University Exchange Project

Title	Managing Body	FY
China-Japan-Korea intercollegiate Cooperative Project for Nurturing Leading Infrastructure Engineers	Graduate School of Engineering	FY 2016~FY 2020



Number of Students, etc.

Number of Students

Faculties and Schools

2017. 5. 1 (the number of person)

Faculties, etc.	Departments · Divisions		Admission Capacity (freshmen only)	Transfer Student Capacity	Enrollment Capacity (all students from freshmen to seniors)	Enrollment						Total
						1 st year	2 nd year	3 rd year	4 th year	5 th year	6 th year	
School of Global Humanities and Social Sciences	Department of Global Humanities and Social Sciences		100	—	400	104	112	71	82	—	—	369
Faculty of Education	Teacher Education Division		240	—	960	243	239	239	273	—	—	994
Faculty of Economics	General Economics	Day Course	265	—	1,060	275	275	274	345	—	—	1,169
		Evening- centered Course	60	—	240	68	60	66	91	—	—	285
			—	15	30	—	—	—	—	—	—	—
	Sub Total		325	15	1,330	343	335	340	436	—	—	1,454
School of Medicine	School of Medical Sciences		120	5	727	126	133	120	141	130	108	758
	School of Health Sciences		106	14	452	111	111	113	113	—	—	448
	Sub Total		226	19	1,179	237	244	233	254	130	108	1,206
School of Dentistry	Dentistry		50	—	300	50	60	50	47	59	49	315
School of Pharmaceutical Science	Pharmacy		40	—	240	41	39	40	41	40	55	256
	Pharmaceutical Sciences		40	—	160	41	40	41	54	—	—	176
	Sub Total		80	—	400	82	79	81	95	40	55	432
School of Engineering	School of Engineering		380	—	1,520	393	391	378	496	—	—	1,658
	Mechanical Systems Engineering		—	—	—	—	—	—	0	—	—	0
	Electrical and Electronic Engineering		—	—	—	—	—	—	2	—	—	2
	Computer and Information Sciences		—	—	—	—	—	—	1	—	—	1
	Structural Engineering		—	—	—	—	—	—	1	—	—	1
	Civil Engineering		—	—	—	—	—	—	0	—	—	0
	Materials Science and Engineering		—	—	—	—	—	—	2	—	—	2
	Applied Chemistry		—	—	—	—	—	—	1	—	—	1
	Subjects Required for All Departments		—	—	—	—	—	—	—	—	—	—
	Sub Total		380	—	1,520	393	391	378	503	—	—	1,665
Faculty of Environmental Science	Environmental Science		130	5	530	132	136	138	157	—	—	563
Faculty of Fisheries	Fisheries		110	—	440	114	109	112	148	—	—	483
Total			1,641	39	7,059	1,698	1,705	1,642	1,995	229	212	7,481

Graduate Schools

2017. 5. 1 (the number of person)

Admission Capacity· Enrollment	Master's Course						Doctoral Course							
	Admission Capacity	Enrollment Capacity	1 st year	2 nd year	3 rd year	Total	Admission Capacity	Enrollment Capacity	1 st year	2 nd year	3 rd year	4 th year	5 th year	Total
Graduate School of Economics	15	30	15	15	—	30	3	9	3	3	8	—	—	14
Graduate School of Engineering	220	440	218	206	—	424	20	70	19	21	28	2	2	72
Graduate School of Fisheries and Environmental Sciences	60	120	55	58	—	113	17	61	16	12	34	2	4	68
Graduate School of Science and Technology	—	—	—	—	—	—	—	—	—	—	6	—	—	6
Graduate School of Biomedical Sciences	66	132	63	64	—	127	105	400	108	116	104	244	—	572
Graduate School of International Health Development	—	—	—	1	—	1	—	—	—	—	—	—	—	—
School of Tropical Medicine and Global Health	37	52	29	22	—	51	—	—	—	—	—	—	—	—
Total	398	774	380	366	—	746	145	540	146	152	180	248	6	732

Admission Capacity· Enrollment	Professional Degree Program					
	Admission Capacity	Enrollment Capacity	1 st year	2 nd year	3 rd year	Total
Graduate School of Education	38	76	29	25	8	62
Total	38	76	29	25	8	62

Research Students, Special Register Students, etc.

2017. 5. 1 (the number of person)

Students	Research Students	Special Register Students	Special Audit Students	Special Research Students
Faculties, etc.				
School of Global Humanities and Social Sciences	3	2	44	
Faculty of Education· Graduate School of Education	2	4	22	1
Faculty of Economics· Graduate School of Economics	2	0	18	2
School of Medicine			4	
School of Dentistry				
School of Pharmaceutical Sciences	0	1	6	
School of Engineering	5	1	9	
Faculty of Environmental Science	1		3	
Faculty of Fisheries	2	1	10	
Graduate School of Engineering	1			2
Graduate School of Biomedical Sciences	4	2		1
Graduate School of Fisheries and Environmental Sciences				4
Center for Educational Innovation		0		
Liaison Center for International Education			48	
Total	20	11	164	10

In addition to students shown in table, 36 others from affiliated universities in Nagasaki Prefecture take Nagasaki University courses for transferable credits.

FY 2017 New Students

Faculties and Schools

2017. 5. 1 (the number of person)

Admission Capacity, etc.		Admission Capacity	Applicants	Entrants
Faculties and Schools				
School of Global Humanities and Social Sciences		100	269 ※ 2	104
Faculty of Education		240	745	243
Faculty of Economics	Day Course	265	666 ※ 11	268 ※ 7
	Evening-centered Course	60	104	68
School of Medicine		226	926	226
School of Dentistry		50	379 ※ 5	50
School of Pharmaceutical Sciences		80	570 ※ 2	82
School of Engineering		380	1,040 ※ 53	377 ※ 16
Faculty of Environmental Science		122 ※ 8	327 ※ 14	129 ※ 3
Faculty of Fisheries		110	534 ※ 1	114
Total		1,633 ※ 8	5,560 ※ 88	1,661 ※ 26

※ Indicates international students, and is excluded from the total.

Geographical Distribution of Entrants' Secondary Schools

2017. 5. 1 (the number of person)

Areas, etc.	Nagasaki	Kyushu (Except Nagasaki)	Chugoku Shikoku	Kinki	Chubu	Kanto	Tohoku Hokkaido	Returnee Students High School Equivalency Examination, etc.	Total
School of Global Humanities and Social Sciences	21	65	6	6	1	2	2	1	104
Faculty of Education	128	91	19	3	0	1	1	0	243
Faculty of Economics	109	199	5	17	1	2	2	1	336
School of Medicine	82	98	14	14	5	10	2	1	226
School of Dentistry	8	17	5	5	5	8	1	1	50
School of Pharmaceutical Sciences	23	38	5	7	1	7	0	1	82
School of Engineering	136	206	18	5	6	4	1	1	377
Faculty of Environmental Science	53	55	8	6	2	2	3	0	129
Faculty of Fisheries	18	25	24	16	13	8	10	0	114
Total	578	794	104	79	34	44	22	6	1,661

Graduate Schools

2017. 5. 1 (the number of person)

Admission Capacity, etc.		Admission Capacity	Applicants	Spring Semester Enrollment (2017. April)	Fall Semester Enrollment (2016. October)
Graduate School of Education	Professional Degree Program	38	37	29	
Graduate School of Economics	Master's Course	15	8 ※ 16	7 ※ 8	— —
	Doctoral Course	3	4 ※ 2	3	— —
Graduate School of Engineering	Master's Course	220	229 ※ 19	196 ※ 14	0 ※ 8
	Doctoral Course	15	3 ※ 9	3 ※ 9	4 ※ 0
Graduate School of Fisheries and Environmental Sciences	Doctoral Course (5-Year Program)	5	3 ※ 1	3	— —
	Master's Program	60	47 ※ 11	37 ※ 11	1 ※ 6
Graduate School of Biomedical Sciences	Doctoral Program	12	5 ※ 6	5 ※ 6	0 ※ 4
	Doctoral Program (5-Year Doctoral Program)	5	0 ※ 0	0 ※ 0	0 ※ 1
Graduate School of Biomedical Sciences	Master's Course	30	35 ※ 6	26 ※ 4	— —
	Doctoral Course	95	80 ※ 10	74 ※ 9	8 ※ 9
	Master's Course	36	34 ※ 3	28 ※ 3	1 ※ 1
	Doctoral Course	10	8	8	8 ※ 10
School of Tropical Medicine and Global Health	Master's Course	37	42 ※ 18	— —	13 ※ 16
Total		581	535 ※ 101	419 ※ 64	35 ※ 55

※ Indicates international students, and is excluded from the total.

FY 2016 Graduates and Their Paths after Graduation

Undergraduate Students (the number of person)

Faculties and Schools		2016	Total
Faculty of Education		222	17,845
Faculty of Economics	Day Course	381	16,740
	Evening-centered Course	66	777
School of Medicine		234	7,748
School of Dentistry		53	1,897
School of Pharmaceutical Sciences		77	4,505
School of Engineering		376	15,494
Faculty of Environmental Science		148	2,317
Faculty of Fisheries		98	5,975
Total		1,655	73,298

Graduate Students (the number of person)

Graduate Schools		2016	Total
Graduate School of Education		32	757
Graduate School of Economics		15	276
Graduate School of Engineering		232	1,092
Graduate School of Fisheries and Environmental Sciences		70	292
Graduate School of Science and Technology		1	2,879
Graduate School of Biomedical Sciences		159	1,920
Graduate School of International Health Development		0	71
School of Tropical Medicine and Global Health		8	8
Graduate School of Medical Sciences			1,294
Graduate School of Dentistry			149
Graduate School of Pharmaceutical Sciences			924
Graduate School of Engineering			1,758
Graduate School of Environmental Studies			46
Graduate School of Fisheries			616
Graduate School of Marine Science and Engineering			245
Total		517	12,327

2017. 3. 31

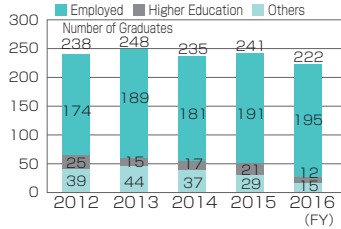
Paths after Graduation

2017. 5. 1 (the number of person)

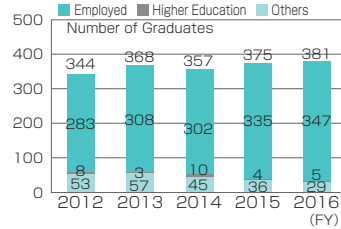
Line of Business	Faculties, etc.							
	Education	Economics	School of Health Sciences School of Medicine	Pharmaceutical Sciences	Engineering	Environmental Studies	Fisheries	Total
Number of Graduates	222	381	112	77	376	148	98	1,414
Job seekers	208	353	95	36	155	106	57	1,010
Employed	195	347	94	35	154	104	55	984
Employment Rate	93.8	98.3	98.9	97.2	99.4	98.1	96.5	97.4
Agriculture, forestry, and fishing		1		1				2
Construction		13		1	26	4	3	47
Manufacturing	2	32		3	46	5	11	99
Electricity, Gas, Heat Supply, and Water		2			1	1		4
Information and Communications, Transportation, and Postal Services	8	45			30	19	3	105
Wholesale·Retail Business	3	45		10	3	15	14	90
Banking·Insurance	5	80			3	9	1	98
Real Estate and Leasing	2	12				4	2	20
Academic Research and Expert and Technical Services	5	13		4	11	5	1	39
Hotel and Restaurant Businesses	4	3				3	2	12
Life-Related Services and Entertainment	1	8				2		11
Education and Study Support Services	123	6			1		3	133
Medicine and Welfare	25	4	90	14		4	2	139
Compound Services	1	3			2	8	1	15
Other Services		20	1		9	6		36
Public Services	16	60	4	2	22	18	12	134
Higher Education	12	5	17	37	219	32	32	354
Others	15	29	1	5	3	12	11	76

Change in After-graduation Paths for the Past Five Years

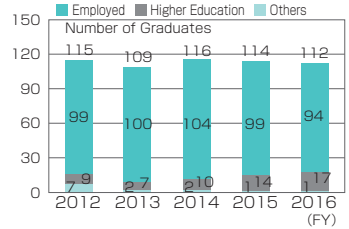
Faculty of Education



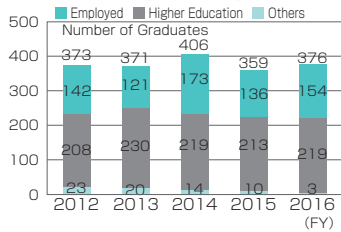
Faculty of Economics



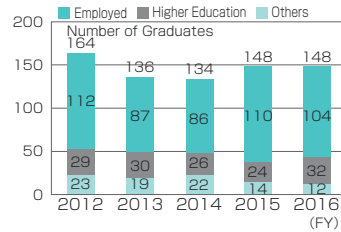
School of Health Sciences, School of Medicine



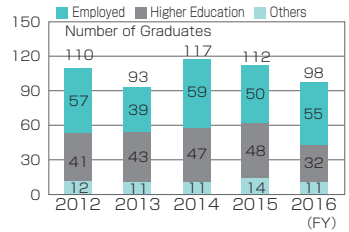
School of Engineering



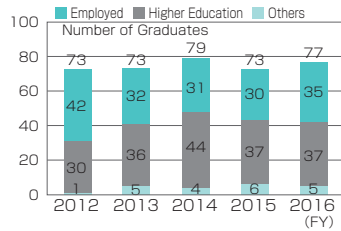
Faculty of Environmental Studies



Faculty of Fisheries



School of Pharmaceutical Sciences



Number of Degrees Conferred

2017. 3. 31 (the number of person)

Doctorate	Completion of both coursework and dissertation		Completion of dissertation only		Number of Degrees Conferred under the Former System
	2016	Total	2016	Total	
Philosophy	3	200	2	29	
Business Administration	1	22			
Medical Science	73	1,988	3	1,834	1,347
Dental Science	20	291	0	98	
Pharmaceutical Science	13	185		37	
Clinical Pharmacy		13			
Engineering	20	333	1	52	
Fisheries Science	4	78		17	
Environmental Science	1	28	0	4	
Marine Science	4	4	0	0	
Total	139	3,142	6	2,071	1,347

(the number of person)

Master's	2016	Total
Philosophy	3	6
Science	2	57
Education	0	584
Economics	4	131
Business Administration	10	123
Tropical Medicine	8	112
Nursing	12	79
Physical Therapy	4	63
Occupational Therapy	3	33
Pharmaceutical Science	34	1,316
Clinical Pharmacy		209
Engineering	213	4,800
Fisheries Science	33	1,098
Environmental Studies		228
Environmental Science	20	106
Public Health	0	71
Total	346	9,016

Master's	2016	Total
Master of Education (Professional)	32	173



International Exchange

FY 2017 International Students

Details by Faculty

2017. 5. 1 (number of students)

Students Faculties, etc	Students				Students Faculties, etc	Students			
	Undergraduates	Graduates	Research Students, etc	Total		Undergraduates	Graduates	Research Students, etc	Total
School of Global Humanities and Social Sciences	1		47 (3)	48 (3)	Faculty of Fisheries	2		9	11
Faculty of Education	1		24 (2)	25 (2)	Graduate School of Education		2	2 (1)	4 (1)
Faculty of Economics	23		18	41	Graduate School of Economics		16 (1)	4	20 (1)
School of Medicine			3	3	Graduate School of Engineering		59 (2)	2	61 (2)
School of Dentistry					Graduate School of Fisheries and Environmental Sciences		60(10)	4	64(10)
School of Pharmaceutical Sciences			6	6	Graduate School of Biomedical Sciences		81(17)	1	82(17)
School of Engineering	40		10	50	School of Tropical Medicine and Global Health		21 (1)		21 (1)
Faculty of Environmental Studies	18		4	22	Liaison Center for International Education			51 (3)	51 (3)
Total						85	239(31)	185 (9)	509(40)

Number in () indicates government-sponsored international students, and is included in the total.

Details by Country, Regions

(number of students)

Students Countries,Regions	Students				Students Countries,etc	Students			
	Undergraduates	Graduates	Research Students, etc	Total		Undergraduates	Graduates	Research Students, etc	Total
Afghanistan		1		1 (0)	Mongolia		3	3	6 (0)
Bangladesh		9 (2)		9 (2)	Mozambique		1		1 (0)
Belgium			2	2 (0)	Myanmar		18 (5)		18 (5)
Brunei			2	2 (0)	Nepal		1		1 (0)
Burundi		1		1 (0)	Netherlands		1	16 (1)	17 (1)
Cambodia		1		1 (0)	Nigeria		5 (2)		5 (2)
China	60	96 (2)	84	240 (2)	Pakistan		1		1 (0)
Democratic Republic of Congo		6		6 (0)	Peru			1 (1)	1 (1)
Egypt		5 (1)		5 (1)	Philippines		5 (3)	2 (1)	7 (4)
Ethiopia		1	1 (1)	2 (1)	Republic of Korea	23	7	31	61 (0)
France			3 (1)	3 (1)	Rwanda		1		1 (0)
Germany			3 (1)	3 (1)	Spain			1	1 (0)
Ghana		6 (1)		6 (1)	Sudan		3		3 (0)
Guatemala		1 (1)		1 (1)	Switzerland			1 (1)	1 (1)
Guinea		1 (1)		1 (1)	Taiwan		7	17	24 (0)
Hong Kong			3	3 (0)	Tanzania		2 (1)		2 (1)
Hungary			1 (1)	1 (1)	Thailand		9	1	10 (0)
India		1		1 (0)	Turkey		1		1 (0)
Indonesia		1 (1)	1	2 (1)	Uganda		2		2 (0)
Iran		2 (1)		2 (1)	Ukraine			1 (1)	1 (1)
Italy			7	7 (0)	United Kingdom			2	2 (0)
Kazakhstan		4		4 (0)	United States of America			2	2 (0)
Kenya		10 (3)		10 (3)	Vietnam		25 (7)		25 (7)
Malaysia	2			2 (0)	Zambia		1		1 (0)
Total						85 (0)	239 (31)	185 (9)	509 (40)

Number in () indicates government-sponsored international students, and is included in the total. Countries, etc. are listed in alphabetical order.

Agreements on Academic Exchange with Overseas Institutions

2017. 5. 1

	Countries, etc	Partner Institution	Coordinating Unit※	Date Signed
1	People's Republic of China	Fujian Center for Disease Control and Prevention	Graduate School of Biomedical Sciences	August 23, 1989
2		Fudan University	Graduate School of Biomedical Sciences	October 4, 1989
3		Fuzhou University	Graduate School of Engineering	March 4, 1992
4		Ocean University of China	Graduate School of Fisheries and Environmental Sciences	January 20, 1997
5		China Pharmaceutical University	Graduate School of Biomedical Sciences	October 30, 1998
6		Fujian Medical University	Graduate School of Biomedical Sciences	August 6, 2001
7		Tongji University	Graduate School of Engineering	November 12, 2001
8		Dalian Ocean University	Graduate School of Fisheries and Environmental Sciences	January 17, 2003
9		The Fourth Military Medical University	Graduate School of Biomedical Sciences	March 26, 2003
10		Hong Kong Baptist University	School of Pharmaceutical Sciences	July 9, 2004
11		Beijing Normal University	Faculty of Education	December 27, 2004
12		Beijing Institute of Education	Faculty of Education	December 28, 2004
13		Xinjiang Medical University	Graduate School of Biomedical Sciences	September 26, 2005
14		Shanghai University of Finance and Economics	Faculty of Economics	December 27, 2013
15		Central South University	Graduate School of Biomedical Sciences	April 18, 2006
16		Northeast Normal University	Faculty of Education	March 22, 2007
17		Shanghai Ocean University	Graduate School of Fisheries and Environmental Sciences	May 18, 2007
18		Shanghai Normal University	Faculty of Education	June 27, 2007
19		East China Normal University	School of Global Humanities and Social Sciences	July 2, 2007
20		Jimei University	Graduate School of Fisheries and Environmental Sciences	August 9, 2007
21		Tianjin University of Science & Technology	Graduate School of Engineering	December 10, 2007
22		Jilin University	Graduate School of Fisheries and Environmental Sciences	January 8, 2008
23		Jiangsu Institute of Parasitic Diseases	Institute of Tropical Medicine	September 20, 2010
24		China Medical University	Institute of Tropical Medicine	September 21, 2010
25		Shandong University	Graduate School of Engineering	November 1, 2010
26		Shandong University of Science and Technology	Graduate School of Engineering	November 1, 2010
27		Zhejiang Ocean University	Graduate School of Fisheries and Environmental Sciences	July 28, 2011
28		South-Western University of Finance and Economics	Faculty of Economics	March 1, 2012
29		Guangzhou Medical University	Graduate School of Biomedical Sciences	March 11, 2013

※() indicates inter-faculty agreements.

	Countries, etc	Partner Institution	Coordinating Unit※	Date Signed
30	People's Republic of China	Yangzhou University	Graduate School of Fisheries and Environmental Sciences	February 24, 2014
31		The Education University of Hong Kong	School of Global Humanities and Social Sciences	November 11, 2015
32		Dalian Medical University	Graduate School of Biomedical Sciences	April 25, 2016
33		Nanchang University	Graduate School of Biomedical Sciences	July 11, 2016
34		School of Medicine, Shanghai Jiao Tong University	(School of Medicine) (School of Dentistry)	September 21, 2016
35		Shanghai International Studies University	Faculty of Economics	September 21, 2016
36	Taiwan	National Yang Ming University	Graduate School of Biomedical Sciences	June 21, 2002
37		Tamkang University	Graduate School of Fisheries and Environmental Sciences	November 8, 2004
38		National Kaohsiung Marine University	Graduate School of Fisheries and Environmental Sciences	April 19, 2005
39		National Taiwan Ocean University	Graduate School of Fisheries and Environmental Sciences	August 9, 2005
40		Kaohsiung Medical University	Graduate School of Biomedical Sciences	August 1, 2006
41		National Chengchi University	School of Global Humanities and Social Sciences	August 4, 2009
42		National Taiwan University	School of Global Humanities and Social Sciences	November 5, 2010
43		National Taiwan Normal University	School of Global Humanities and Social Sciences	February 13, 2012
44		Fisheries Research Institute Council of Agriculture	Graduate School of Fisheries and Environmental Sciences	June 8, 2012
45		Taipei Medical University	Graduate School of Biomedical Sciences	December 2, 2013
46		National Cheng Kung University	School of Global Humanities and Social Sciences	June 23, 2015
47		National Dong Hwa University	Faculty Economics	July 15, 2016
48		National University of Kaohsiung	School of Global Humanities and Social Sciences	August 30, 2016
49		National Kaohsiung University of Applied Sciences	School of Global Humanities and Social Sciences	March 1, 2017
50	Taipei Veterans General Hospital	Graduate School of Biomedical Sciences	April 15, 2017	
51	Republic of Korea	Jeju National University	Graduate School of Engineering	January 26, 1988
52		Pukyong National University	Graduate School of Fisheries and Environmental Sciences	January 13, 1988
53		Kangwon National University	Graduate School of Engineering	April 4, 2002
54		Jinju Health College	Graduate School of Biomedical Sciences	September 11, 2002
55		Changwon National University	Faculty of Education	October 24, 2002
56		Chonnam National University	Graduate School of Fisheries and Environmental Sciences	December 20, 2002
57		Inha University	Graduate School of Fisheries and Environmental Sciences	July 4, 2003
58		Hanyang University	Faculty of Education	October 10, 2003
59		Korea Institute of Ocean Science & Technology	Graduate School of Fisheries and Environmental Sciences	February 11, 2004
60		Kyungpook National University	Faculty of Education	September 30, 2004

※ () indicates inter-faculty agreements.

	Countries, etc	Partner Institution	Coordinating Unit※	Date Signed
61	Republic of Korea	Ewha Womans University	Liaison Center for International Education	February 22, 2006
62		Sungkyunkwan University	Liaison Center for International Education	March 28, 2006
63		Kyung Hee University	Liaison Center for International Education	August 21, 2006
64		Hallym University	Graduate School of Biomedical Sciences	May 23, 2007
65		Seoul National University	Graduate School of Biomedical Sciences	July 16, 2007
66		Pusan National University	Graduate School of Biomedical Sciences	September 13, 2007
67		Yeungnam University	Graduate School of Engineering	February 28, 2008
68		Silla University	Faculty of Education	June 17, 2008
69		Korea National University of Education	Faculty of Education	October 25, 2010
70		Chonbuk National University	Graduate School of Engineering	November 1, 2010
71		Chung-Ang University	Faculty of Economics	March 1, 2012
72		Hanshin University	Research Center for Nuclear Weapons Abolition	June 20, 2013
73		Gyeongsang National University	School of Medicine	November 1, 2013
74		Catholic University of Pusan	Graduate School of Biomedical Sciences	April 1, 2014
75		Dongguk University	School of Global Humanities and Social Sciences	October 7, 2014
76		Ajou University	School of Global Humanities and Social Sciences	December 31, 2014
77		Yonsei University Wonju Campus	School of Global Humanities and Social Sciences	January 15, 2015
78		Konkuk University, Seoul Campus	School of Global Humanities and Social Sciences	March 10, 2015
79	Mongolia	Mongolian National University of Medical Sciences	Graduate School of Biomedical Sciences	June 25, 2008
80	Kingdom of Thailand	Chiang Mai University	Institute of Tropical Medicine	September 5, 1990
81		Chulalongkorn University	Graduate School of Biomedical Sciences	March 26, 1999
82		Mahidol University	Institute of Tropical Medicine	November 1, 1999
83		Thammasat University	Institute of Tropical Medicine	March 13, 2006
84		Department of Medical Sciences, Ministry of Public Health	Graduate School of Biomedical Sciences	March 25, 2006
85	Faculty of Economics, Kasetsart University	(School of Global Humanities and Social Sciences)	December 24, 2014	
86	Republic of Indonesia	Sam Ratulangi University	Graduate School of Fisheries and Environmental Sciences	April 19, 1993
87		Airlangga University	Institute of Tropical Medicine	January 20, 2004
88		University of Brawijaya	Graduate School of Fisheries and Environmental Sciences	September 9, 2008
89		Borneo Tarakan University	Graduate School of Fisheries and Environmental Sciences	July 8, 2010
90	University of Indonesia	Graduate School of Fisheries and Environmental Sciences	January 30, 2015	
91	Republic of Singapore	National University of Singapore	Graduate School of Biomedical Sciences	June 15, 1987

※() indicates inter-faculty agreements.

	Countries, etc	Partner Institution	Coordinating Unit※	Date Signed
92	Malaysia	Universiti Sains Malaysia	Graduate School of Fisheries and Environmental Sciences	May 15, 1995
93		Taylor's University	School of Global Humanities and Social Sciences	August 19, 2015
94	Brunei Darussalam	Universiti Brunei Darussalam	School of Global Humanities and Social Sciences	January 28, 2015
95	Republic of the Philippines	University of the Philippines Diliman	School of Global Humanities and Social Sciences	April 10, 2001
96		St. Luke's Medical Center	Institute of Tropical Medicine	February 17, 2004
97		San Lazaro Hospital	Institute of Tropical Medicine	August 20, 2004
98		University of the East	Graduate School of Biomedical Sciences	January 26, 2005
99		University of the Philippines Visayas	Graduate School of Fisheries and Environmental Sciences	March 17, 2010
100		University of the Philippines Manila	Institute of Tropical Medicine	January 20, 2014
101		Ateneo de Manila University	School of Global Humanities and Social Sciences	July 15, 2015
102		University of the Philippines Los Baños	Faculty of Economics	January 24, 2017
103	Socialist Republic of Viet Nam	National Institute of Hygiene and Epidemiology	Institute of Tropical Medicine	June 25, 2001
104		Can Tho University	Graduate School of Fisheries and Environmental Sciences	February 23, 2012
105		National Institute of Malariaology, Parasitology and Entomology	Institute of Tropical Medicine	November 11, 2013
106		Bachmai Hospital	School of Tropical Medicine and Global health	March 2, 2016
107	Republic of the Union of Myanmar	The Ministry of Health and Sports, Department of Human Resources for Health, Department of Medical Research, Myanmar	Graduate School of Biomedical Sciences	February 20, 2007
108		Mandalay Technological University	Graduate School of Engineering	April 1, 2015
109		Yangon Technological University	Graduate School of Engineering	July 20, 2015
110		Parthein University	Graduate School of Fisheries and Environmental Sciences	June 16, 2016
111	People's Republic of Bangladesh	Bangladesh Rural Advancement Committee University	School of Tropical Medicine and Global health	May 30, 2008
112		Islamic University	Graduate School of Biomedical Sciences	April 16, 2015
113	Federal Democratic Republic of Nepal	Patan Academy of Health Sciences	Institute of Tropical Medicine	July 1, 2014
114	Australia	Edith Cowan University	School of Global Humanities and Social Sciences	November 19, 2012
115		University of the Sunshine Coast	School of Global Humanities and Social Sciences	March 10, 2014
116		Southern Cross University	School of Global Humanities and Social Sciences	July 20, 2014
117		Victoria University	School of Global Humanities and Social Sciences	August 1, 2014
118		Queensland University of Technology	School of Global Humanities and Social Sciences	August 25, 2014
119		Western Sydney University	School of Global Humanities and Social Sciences	March 25, 2015
120		Deakin University	Graduate School of Fisheries and Environmental Sciences	April 8, 2015
121	United States of America	University of South Carolina	Graduate School of Fisheries and Environmental Sciences	January 21, 1992
122		Michigan State University	Graduate School of Biomedical Sciences	March 6, 2002

※() indicates inter-faculty agreements.

	Countries, etc	Partner Institution	Coordinating Unit※	Date Signed
123	United States of America	University of Hawai'i at Mānoa	Graduate School of Fisheries and Environmental Sciences	June 14, 2007
124		University of Hawai'i Kapi'olani Community College	(Faculty of Environmental Science)	July 1, 2015
125		Minnesota State University, Mankato	Center for Language Studies	November 14, 2011
126		California State University San Bernardino	Faculty of Economics	June 13, 2012
127		The University of Montana	Center for Language Studies	May 2, 2013
128		California State University, Monterey Bay	School of Global Humanities and Social Sciences	July 15, 2014
129		Benedictine University	School of Global Humanities and Social Sciences	September 12, 2014
130		Northern State University	School of Global Humanities and Social Sciences	September 30, 2014
131		Western Illinois University	School of Global Humanities and Social Sciences	October 7, 2014
132		Otterbein University	School of Global Humanities and Social Sciences	October 14, 2014
133		Arkansas Tech University	School of Global Humanities and Social Sciences	October 17, 2014
134		University of Northern Colorado	School of Global Humanities and Social Sciences	October 31, 2014
135		North Dakota State University	School of Global Humanities and Social Sciences	December 10, 2014
136		The State University of New York at Geneseo	School of Global Humanities and Social Sciences	December 17, 2014
137		Dickinson State University	School of Global Humanities and Social Sciences	January 31, 2015
138		Longwood University	School of Global Humanities and Social Sciences	February 23, 2015
139		Indiana University of Pennsylvania	School of Global Humanities and Social Sciences	April 13, 2015
140		Northeastern Illinois University	School of Global Humanities and Social Sciences	June 19, 2015
141		Presbyterian College	School of Global Humanities and Social Sciences	June 19, 2015
142		Marquette University	School of Global Humanities and Social Sciences	August 13, 2015
143	Frostburg State University	School of Global Humanities and Social Sciences	November 10, 2015	
144	North Carolina State University	Graduate School of Biomedical Sciences	July 14, 2016	
145	Metropolitan State University	Graduate School of Fisheries and Environmental Sciences	February 15, 2017	
146	Canada	University of Manitoba	School of Global Humanities and Social Sciences	November 10, 2014
147		Memorial University of Newfoundland	School of Global Humanities and Social Sciences	November 10, 2014
148		The University of Winnipeg	School of Global Humanities and Social Sciences	December 18, 2014
149		University of Calgary	School of Global Humanities and Social Sciences	January 20, 2015
150		University of the Fraser Valley	School of Global Humanities and Social Sciences	September 10, 2015
151		University of Lethbridge	School of Global Humanities and Social Sciences	November 2, 2015
152	Republic of Peru	University of San Martin de Porres	Graduate School of Biomedical Sciences	March 8, 2016
153	Italian Republic	Politecnico di Torino	Graduate School of Engineering	August 1, 1997

※() indicates inter-faculty agreements.

	Countries, etc	Partner Institution	Coordinating Unit※	Date Signed
154	Italian Republic	University of Naples Federico II	Graduate School of Engineering	May 4, 1998
155		University of Bari	Graduate School of Engineering	July 10, 2008
156		University of Trento	Graduate School of Biomedical Sciences	September 1, 2014
157		Ca' Foscari University of Venice	Faculty of Economics	December 19, 2014
158		Second University of Naples	Graduate School of Biomedical Sciences	February 29, 2016
159	United Kingdom of Great Britain and Northern Ireland	London School of Hygiene & Tropical Medicine	School of Tropical Medicine and Global Health	April 9, 2013
160		Heriot-Watt University	Graduate School of Engineering	October 1, 2014
161		The University of Edinburgh	Graduate School of Engineering	October 1, 2014
162		Oxford Brookes University	School of Global Humanities and Social Sciences	January 20, 2015
163		Northumbria University at Newcastle	School of Global Humanities and Social Sciences	February 18, 2015
164		The University of Aberdeen	School of Global Humanities and Social Sciences	July 6, 2015
165		Manchester Metropolitan University	School of Global Humanities and Social Sciences	September 10, 2015
166		University of the Highlands and Islands, Perth College	School of Global Humanities and Social Sciences	October 6, 2015
167		Keele University	School of Global Humanities and Social Sciences	November 4, 2015
168		University of Stirling	Graduate School of Fisheries and Environmental Sciences	December 19, 2016
169	Federal Republic of Germany	Julius-Maximilians-Universität Würzburg	Graduate School of Biomedical Sciences	September 26, 1996
170		The Johannes Gutenberg University Mainz	Graduate School of Biomedical Sciences	June 21, 2010
171		Leibniz Institute for Prevention Research and Epidemiology-BIPS GmbH	Atomic Bomb Disease Institute	August 7, 2014
172		School of Social Sciences, University of Mannheim	(School of Global Humanities and Social Sciences)	January 7, 2015
173		Nuremberg Institute of Technology	School of Global Humanities and Social Sciences	February 26, 2015
174		University of Applied Sciences Augsburg	School of Global Humanities and Social Sciences	June 19, 2015
175		University of Applied Sciences Hof	School of Global Humanities and Social Sciences	September 10, 2015
176	Kingdom of the Netherlands	Leiden University	School of Global Humanities and Social Sciences, Graduate School of Biomedical Sciences	September 2, 1998
177		Radboud University	School of Global Humanities and Social Sciences	January 27, 2016
178		Delft University of Technology Faculty of Mechanical, Maritime and Materials Engineering	(Graduate School of Engineering)	August 28, 2016
179	Kingdom of Belgium	Institute of Tropical Medicine	School of Tropical Medicine and Global Health	January 29, 2013
180		Faculty of Arts & Philosophy, Faculty of Economics & Business Administration, Faculty of Bioscience Engineering, Ghent University	Faculty of Economics, Graduate School of Fisheries and Environmental Sciences	March 18, 2015
181		University of Mons	School of Global Humanities and Social Sciences	November 26, 2015
182		Faculty of Arts, University of Leuven (KU Leuven)	(School of Global Humanities and Social Sciences)	September 1, 2016
183	French Republic	Ecole Nationale Supérieure de Chimie de Mulhouse Université de Haute-Alsace	Graduate School of Biomedical Sciences	September 9, 2005

※ () indicates inter-faculty agreements.

	Countries, etc	Partner Institution	Coordinating Unit※	Date Signed
184	French Republic	Guimet Museum	(University Library)	July 18, 2012
185		European Business School Paris	Faculty of Economics	July 1, 2013
186		University of Angers	Graduate School of Biomedical Sciences	July 9, 2013
187		University Paris-Est Créteil	School of Global Humanities and Social Sciences	November 24, 2015
188		Research Institute on Protection and Evaluation of Atomic Energy	Graduate School of Biomedical Sciences	October 1, 2016
189		ISC Paris Business School	Faculty of Economics	February 20, 2017
190	Spain	Universidad Pontificia Comillas	Graduate School of Engineering	July 25, 2013
191		University of Malaga	School of Global Humanities and Social Sciences	February 13, 2015
192	Portuguese Republic	The University of Porto	Graduate School of Biomedical Sciences	November 23, 2010
193		University Fernando Pessoa	School of Global Humanities and Social Sciences	February 12, 2015
194	Kingdom of Sweden	Faculty of Engineering, Lund University	(Graduate School of Fisheries and Environmental Sciences)	August 13, 2015
195	Kingdom of Norway	Norwegian University of Science and Technology	Graduate School of Fisheries and Environmental Sciences	January 18, 2006
196	Republic of Bulgaria	Medical University-Provdiv	Graduate School of Biomedical Sciences	July 29, 2013
197	Republic of Poland	Cracow University of Economics	Faculty of Economics	February 17, 2016
198		Warsaw School of Economics	Faculty of Economics	March 2, 2016
199	Romania	Technical University of Civil Engineering Bucharest	Graduate School of Engineering	July 12, 2016
200	Republic of Belarus	Belarusian State Medical University	Graduate School of Biomedical Sciences	May 29, 1996
201		Gomel State Medical University	Graduate School of Biomedical Sciences	January 31, 2002
202		Belarusian Medical Academy of Post-Graduate Education	Graduate School of Biomedical Sciences	July 11, 2008
203	Republic of Kazakhstan	Semey State Medical University	Graduate School of Biomedical Sciences	March 4, 1998
204		Scientific Research Institute of Radiation Medicine and Ecology	Atomic Bomb Disease Institute	December 18, 2002
205		Kazakh National Medical University Named After S.D. Asfendiyarov	Graduate School of Biomedical Sciences	August 26, 2009
206		Syzganovs' National Scientific Center of Surgery	Graduate School of Biomedical Sciences	August 1, 2012
207	Ukraine	State Institution "V.P. Komisarenko Institute of Endocrinology and Metabolism of National Academy of Medical Sciences of Ukraine"	Atomic Bomb Disease Institute	February 21, 2003
208		National Research Centre for Radiation Medicine, National Academy of Medical Sciences of Ukraine	Atomic Bomb Disease Institute	February 21, 2003
209		Ukrainian Radiation Protection Institute	Atomic Bomb Disease Institute	November 16, 2012
210		Zhitomir Region Inter-district Diagnostic Center in Korosten City	Graduate School of Biomedical Sciences	February 13, 2017
211	Russian Federation	Federal State Institution "Medical Radiological Research Center" of the Ministry of Health and Social Development of the Russian Federation	Graduate School of Biomedical Sciences	July 5, 2002
212		North-Western State Medical University named after I.I. Mechnikov	Graduate School of Biomedical Sciences	June 30, 2008
213		Endocrine Research Centre of the Ministry of Public Health of Russia	Graduate School of Biomedical Sciences	December 14, 2016
214	Georgia	Tbilisi State Medical University	Graduate School of Biomedical Sciences	March 27, 2015

※() indicates inter-faculty agreements.

	Countries, etc	Partner Institution	Coordinating Unit※	Date Signed
215	Republic of Kenya	Kenyatta University	Graduate School of Biomedical Sciences	March 29, 2004
216		Kenya Medical Research Institute	Institute of Tropical Medicine	November 12, 2004
217		University of Nairobi	Graduate School of Biomedical Sciences	April 27, 2010
218		Kenya Marine and Fisheries Research Institute	Graduate School of Fisheries and Environmental Sciences	August 29, 2011
219		Moi University	Graduate School of Engineering	October 10, 2012
220		Maseno University	Center for International Collaborative Research	June 21, 2013
221	Republic of South Africa	National Institute for Communicable Diseases of the National Health Laboratory Service	Institute of Tropical Medicine	July 8, 2010
222	United Republic of Tanzania	Muhimbili University of Health and Allied Sciences	Graduate School of Biomedical Sciences	December 23, 2011
223	Republic of Zambia	University of Zambia	Graduate School of Biomedical Sciences	December 14, 2016
224	Democratic Republic of the Congo	University of Kinshasa	Center for International Collaborative Research	May 31, 2016
225	Federal Republic of Nigeria	University of Nigeria	Center for International Collaborative Research	July 9, 2016
226	Arab Republic of Egypt	Egypt-Japan University of Science and Technology	Center for International Collaborative Research	July 15, 2016
227	Republic of Seychelles	University of Seychelles	Faculty of Economics	August 29, 2016
228	United Arab Emirates	United Arab Emirates University	School of Medicine	May 11, 2015
229	Islamic Republic of Iran	Tehran University of Medical Sciences	Graduate School of Biomedical Sciences	September 8, 2015
230	Hashemite Kingdom of Jordan	The University of Jordan	Graduate School of Biomedical Sciences	March 12, 2003
231	Republic of Turkey	Gazi University	Graduate School of Engineering	July 25, 2013
232		Istanbul Gelisim University	Graduate School of Engineering	March 24, 2015

※() indicates inter-faculty agreements.

Faculty Staff Visited Overseas Institutions and International Researchers Visited NU in FY 2016

Countries & Regions		Faculty Members	Overseas Researchers	Countries & Regions		Faculty Members	Overseas Researchers		
Asia	People's Republic of China	104	7	Europe	EU Countries	United Kingdom of Great Britain and Northern Ireland	60	3	
	Taiwan	39	4			French Republic	29	0	
	Republic of Korea	99	1			Federal Republic of Germany	35	1	
	ASEAN Countries	Republic of the Philippines	29			5	Italian Republic	32	1
		Malaysia	10			0	Kingdom of the Netherlands	17	0
		Kingdom of Thailand	70			8	Others	60	0
		Republic of Indonesia	28			3	Swiss Confederation	16	0
		Socialist Republic of Viet Nam	67			13	Others	4	0
		Republic of Singapore	11			0	Russian Federation	10	3
		Republic of the Union of Myanmar	47			3	Republic of Belarus	8	2
		Others	26	0	Republic of Kazakhstan	12	1		
	Others	29	6	Others	3	1			
	Americas	United States of America	172	1	Africa	Republic of Kenya	70	8	
Canada		15	0	Republic of South Africa		16	1		
Federative Republic of Brazil		12	0	Others		47	11		
Others		17	0	Oceania	Australia	40	2		
Middle East	United Arab Emirates	5	0		Others	4	0		
	Republic of Turkey	4	0	Total	1,252	89			
	Others	5	4						



Social Contribution

Center for Industry, University and Government Cooperation

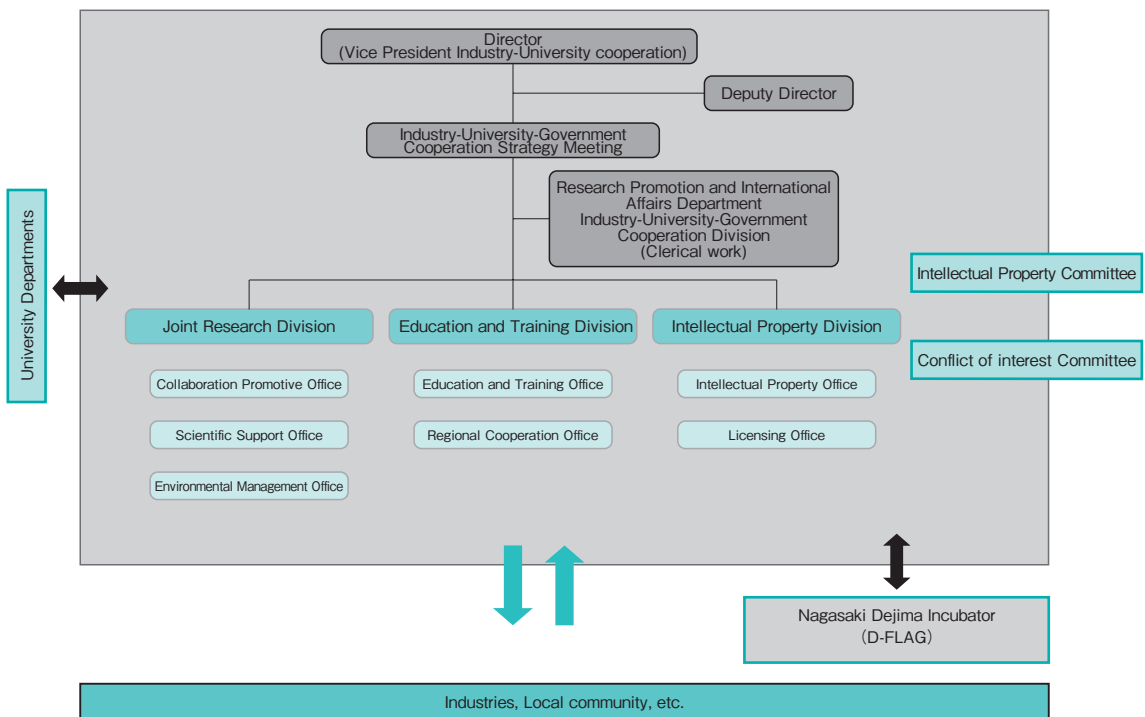
The Center for Industry, University and Government Cooperation, established in June, 2011, consists of the Joint Research Division, the Education and Training Division and the Intellectual Property Division. The aim of this organization is to carry out comprehensive and functional industry-university-government cooperation, evaluation, management and application of research findings and to provide life-long learning opportunities under the strategic driving force of Nagasaki University.

As an intermediary between the university and the community, the Joint Research Division promotes providing research seeds and information, taking technical consultation, undertaking requested analysis and providing technical advice in instrumental analysis. The division also promotes the taking care of precision analytical instruments and the practice of the environmental safety management at Nagasaki University.

The Education and Training Division contributes to society by applying human resources supports for entrepreneurs and the local governments.

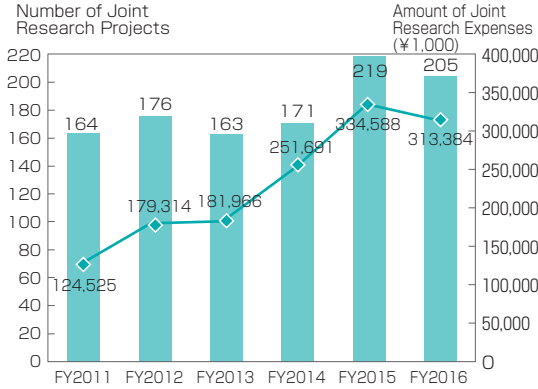
The Intellectual Property Division protects and enhances research findings as intellectual properties of Nagasaki University in order to develop new products and industries providing research findings to industry, and results in contribution to global society.

Center for Industry, University and Government Cooperation Nagasaki University

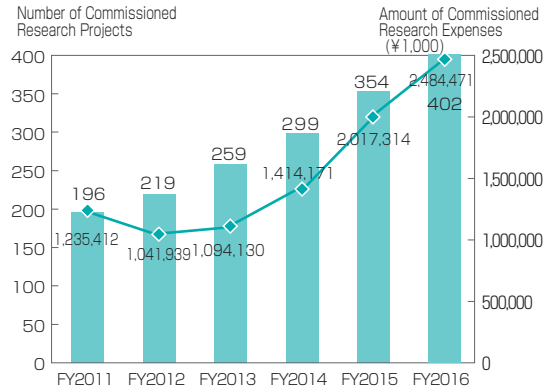


Industry-University Cooperation

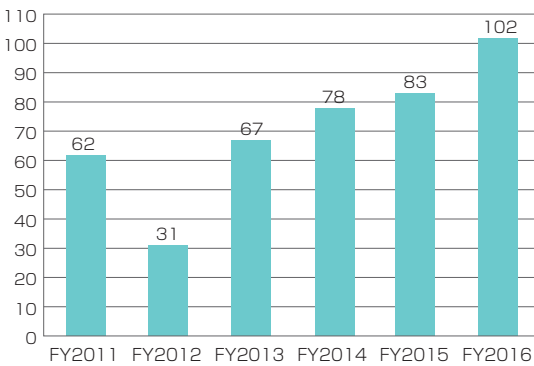
Joint Research



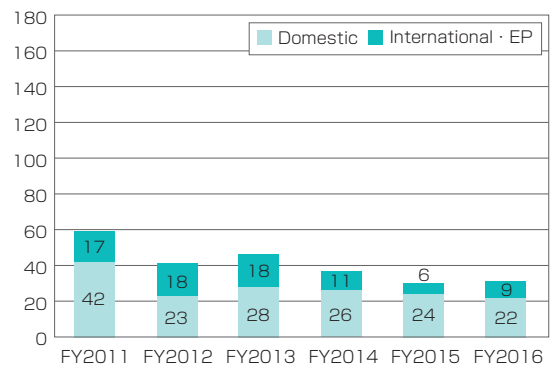
Commissioned Research



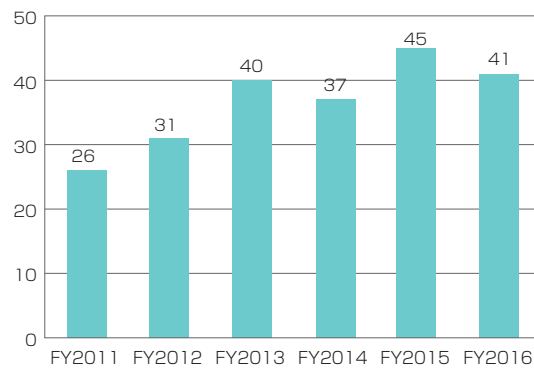
Invention Submission



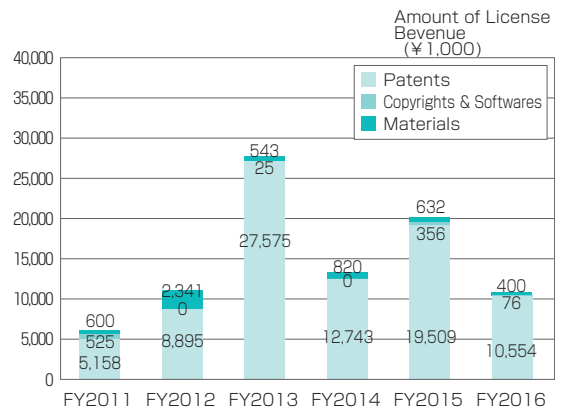
Number of Patent Applications



Number of Patent Licenses



License Revenue (including license and transfer)

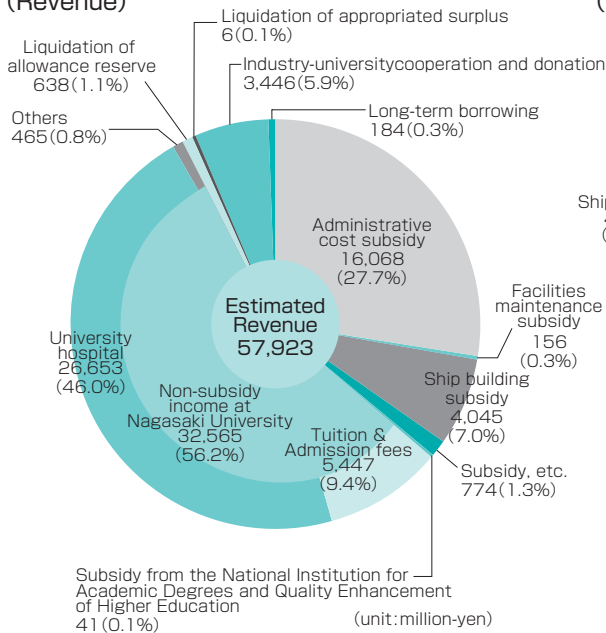




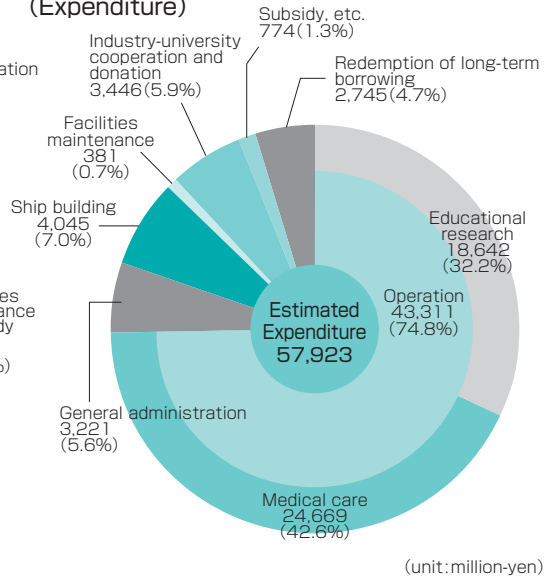
Finances

FY 2017 Budget

(Revenue)



(Expenditure)



Funds from Outside the University

Grants-in-Aid for Scientific Research

2017.5

Type of Research	Number of Grants	Amounts (¥1,000)
Grant-in-Aid for Scientific Research on Innovative Areas	3	8,400
Grant-in-Aid for Scientific Research (S)	1	33,000
Grant-in-Aid for Scientific Research (A)	8	68,400
Grant-in-Aid for Scientific Research (B)	91	338,320
Grant-in-Aid for Scientific Research (C)	314	351,100
Grant-in-Aid for Exploratory Research	39	37,000
Grant-in-Aid for Young Scientists (A)	8	33,500
Grant-in-Aid for Young Scientists (B)	158	185,000
Grant-in-Aid for Research Activity Start-up	5	5,400
Grant-in-Aid for JSPS Fellows	22	23,400
Total	649	1,083,520

Amounts shows direct cost only.

Scholarship

FY 2016

Number	Amounts (¥1,000)
1,985	1,051,460

Commissioned Research

FY 2016

Number	Amounts (¥1,000)
402	2,484,471

Joint Research with Private Sectors

FY 2016

Number	Amounts (¥1,000)
205	313,384



Campus

Bunkyo Campus

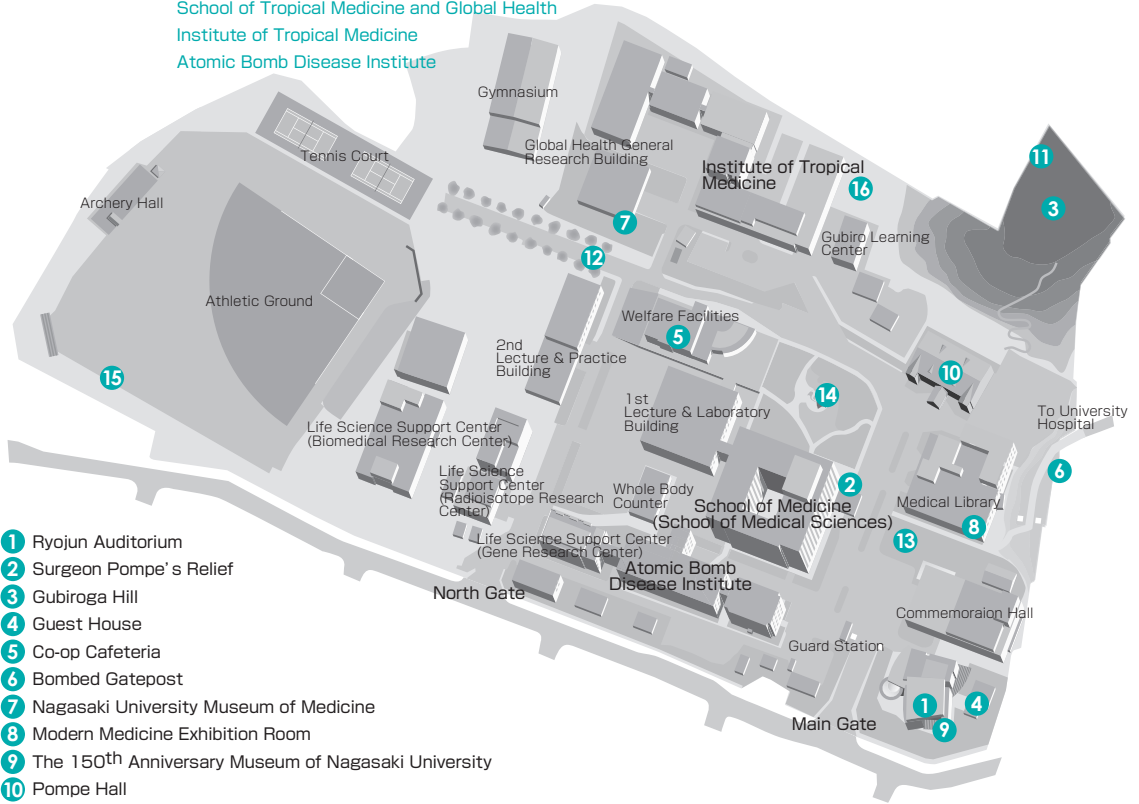
- Administration Bureau
- School of Global Humanities and Social Sciences
- Faculty of Education
- School of Pharmaceutical Sciences
- School of Engineering
- Faculty of Environmental Science
- Faculty of Fisheries
- Central Library

- 1 Clock Tower and Mural
- 2 Whale Cannon
- 3 Statue of Youth
- 4 Global Education and Student Support Center Bunkyo Sky Hall
- 5 NAGASAKI SOGAKUDO
- 6 Research Center for Nuclear Weapons Abolition
- 7 Library Gallery
- 8 Statue of Honorary Doctor Osamu Shimomura
- 9 Medicinal Plant Garden
- 10 History Museum of Medicine
- 11 Cenotaph for A-Bomb Victims
- 12 Monument to the Mitsubishi Weapons Factory
- 13 Omoyai Square and Biotope
- 14 Chionanthus Retusus
- 15 Art and Tech Exhibition Lab SOSOKAN
- 16 Statue: In the wind ~Dream of Tomorrow~



Sakamoto Campus 1

School of Medicine(School of Medical Sciences)
 Center for International Collaborative Research
 School of Tropical Medicine and Global Health
 Institute of Tropical Medicine
 Atomic Bomb Disease Institute



- 1 Ryojun Auditorium
- 2 Surgeon Pompe's Relief
- 3 Gubiroga Hill
- 4 Guest House
- 5 Co-op Cafeteria
- 6 Bombed Gatepost
- 7 Nagasaki University Museum of Medicine
- 8 Modern Medicine Exhibition Room
- 9 The 150th Anniversary Museum of Nagasaki University
- 10 Pompe Hall
- 11 Monument to the Atomic Bomb Victims
- 12 Keyaki Street
- 13 Siebold Monument
- 14 Monument to the 50th Anniversary of the Recovery from the Atomic Bomb
- 15 Nagai Senbonzakura
- 16 Monument to the Bomb Victims of Medical and Pharmaceutical School

Sakamoto Campus 2

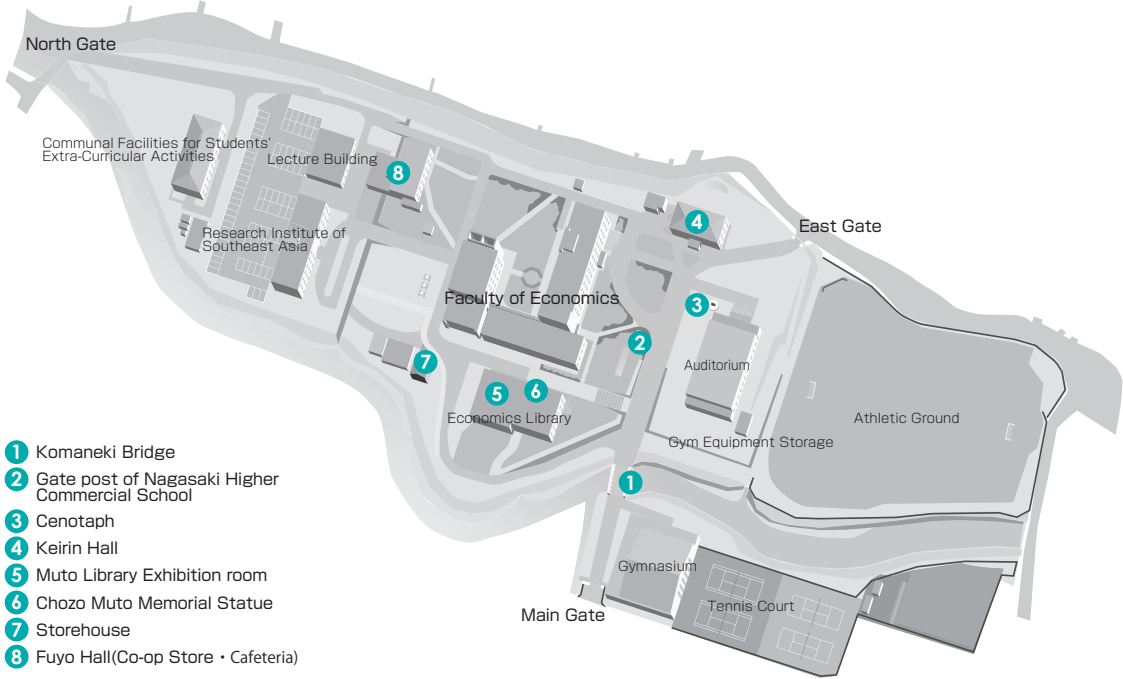
School of Health Sciences
 School of Dentistry
 School of Pharmaceutical Sciences
 University Hospital

- 1 Sky Lounge Pompe
- 2 Statue of Child Holding Up a Water Bowl
- 3 Bombed Camphor Tree
- 4 Gallery
- 5 Corridor
- 6 Monument to Nagasaki Medical College Hospital
- 7 Lawson
- 8 Welfare Facilities (Cafeteria)
- 9 // (Store)
- 10 Tully's Coffee
- 11 Post Office



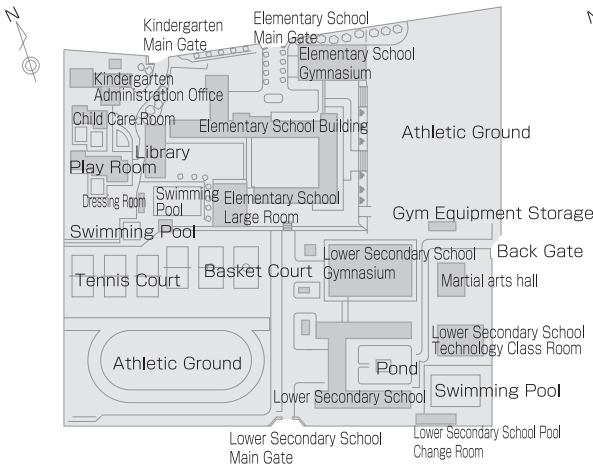
Katafuchi Campus

Faculty of Economics

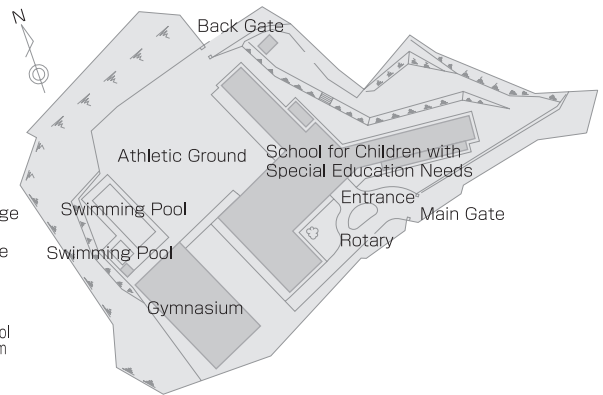


- 1 Komaneki Bridge
- 2 Gate post of Nagasaki Higher Commercial School
- 3 Cenotaph
- 4 Keirin Hall
- 5 Muto Library Exhibition room
- 6 Chozo Muto Memorial Statue
- 7 Storehouse
- 8 Fuyo Hall(Co-op Store · Cafeteria)

Affiliated Schools (Kindergarten · Elementary School · Lower Secondary School)



School for Children with Special Education Needs



Welfare Facilities

Sports facilities

Facilities Campuses	Gymnasium	Archery Hall	Judo Hall	Kendo Hall	Martial ArtHall	Tennis Court	Athletic Ground	Volleyball Court	Swimming Pool	Handball Court	Remarks
	Bunkyo Campus	2	1	1	1		8	1	2	1	
Katafuchi Campus	1					4	1				
Sakamoto Campus	2	1			1	2	1				
Total	5	2	1	1	1	14	3	2	1	1	

Other major facilities

Name	Departments, etc.	Address	Facilities	Services	Governing Bodies
Seaside Training Center	Student Support Department	Shishigawa Go, Togitsu Cho, Nishisonogi Gun	Accommodation facilities Dining room Boats	Student extra-curricular activities Workshop for university staff Recreation	Nagasaki University
Shimabara Joint Training Center For National Universities in Kyusyu Area	//	1201 Ko Kureishibaru Shimabara City	Accommodation facilities Physical education facilities	Workshop Recreation	Nagasaki University
Communal Facilities for Students' Extra-Curricular Activities	//	1-14 Bunkyo, Bunkyo campus	Communal room · All purpose room Meeting room	Student extra-curricular activities	Nagasaki University
Student Union	//	//	Getting a job support, Career information section Communal lounge · Meeting room Japanese room · Tea-ceremony room Multipurpose room Cafeteria · Coffee shop School supply store Barber · Beauty shop	Collection of job information, offer and consultation Student extra-curricular activities Sale of food Cafeteria · Coffee shop Sale of books and daily necessities Hair trimming and setting	Nagasaki University Nagasaki University Co-op Suppliers
Student Plaza	//	//	Multipurpose hall 1 Multipurpose hall 2	Student extra-curricular activities	Nagasaki University
Global education and student support center	//	//	Bunkyo Sky Hall	Lecture Student extra-curricular activities	Nagasaki University
Student Community Plaza	//	//	Student lounge · Meeting room	Student extracurricular activities	Nagasaki University
Communal Facilities for Student Extra-Curricular Activities	Faculty of Economics	4-2-1 Katafuchi Faculty of Economics Katafuchi campus	Lounge · Communal room Communal meeting room Music practice room Music appreciation room Workshop room · Photo lab All purpose room	Student extra-curricular activities	Nagasaki University

Name	Departments, etc.	Address	Facilities	Services	Governing Bodies
Sakamoto Campus 1 Communal Facilities for Student Extra- Curricular Activities	School of Medical Sciences, School of Medicine	1-12-4 Sakamoto School of Medicine Sakamoto campus	Communal room Music practice room Outdoor equipment storage	Student extra- curricular activities	Nagasaki University
Sakamoto Campus 2 Communal Facilities for Student Extra- Curricular Activities	School of Health Sciences, School of Medicine	1-7-1 Sakamoto School of Health Sciences School of Medicine Sakamoto campus	Lounge Equipment storage	Student extra- curricular activities	Nagasaki University
Fuyo Hall	Faculty of Economics	4-2-1 Katafuchi Faculty of Economics Katafuchi campus	Lounge · Cafeteria School supply store	Cafeteria Sale of books, food, and daily necessities	Nagasaki University Nagasaki University Co-op
Welfare Facilities	School of Medical Sciences, School of Medicine	1-12-4 Sakamoto School of Medicine Sakamoto campus	Lounge Cafeteria · School supply store	Cafeteria Sale of books, food, and daily necessities	Nagasaki University Nagasaki University Co-op
〃	School of Dentistry	1-7-1 Sakamoto School of Dentistry Sakamoto campus	Students study room Seminar room Japanese room Cafeteria	Student extra-curricular activities Cafeteria Sale of books and daily necessities	Nagasaki University Nagasaki University Co-op
〃	School of Health Sciences, School of Medicine	1-7-1 Sakamoto University Sakamoto campus School of Health Science, School of Medicine (2shops)	Cafeteria School supply store	Cafeteria Sale of daily necessities	Nagasaki University Co-op

Land · Buildings · Ships

Land and Buildings

Faculties, Centers, etc.	Address	Land (㎡)		Buildings (㎡)	
		University-owned	Leased	University-owned	Leased
Bunkyo Campus	1-14 Bunkyo, Nagasaki City	187,125		41,398 121,174	
Accommodation Facility "Kangetsuso"	11-1, 11-13 Kami Nishiyama, Nagasaki City	903		228 399	
Seaside Training Center	Shishigawa Go, Togitsu Cho, Nishisonogi Gun	1,451	106	371 616	
Kindergarten · Elementary School · Lower Secondary School	4-23 Bunkyo, Nagasaki City	51,185		8,985 16,157	
School for Children with Special Education Needs	42-1 Yanagidani Machi, Nagasaki City	12,529		2,452 3,527	
Katafuchi Campus	4-2-1 Katafuchi, Nagasaki City	51,723		6,840 16,422	
Sakamoto Campus 1	1-12-4 Sakamoto, Nagasaki City	92,176		17,784 54,950	
School of Medicine Charnel House	4-59 Zenza, Nagasaki City		48	13 13	

Faculties, Centers, etc.	Address	Land (㎡)		Buildings (㎡)	
		University-owned	Leased	University-owned	Leased
Sakamoto Campus 2	1-7-1 Sakamoto, Nagasaki City	86,807		<u>31,590</u> 169,488	
Nomozaki Research Laboratory	1321 Nomo Machi, Nagasaki City	15,899		<u>448</u> 448	
Organisation for Marine Science and Technology Institute for East China Sea Research	1551-7 Taira, Nagasaki City	10,900		<u>1,688</u> 2,648	
University Housing		22,753		<u>2,600</u> 11,335	<u>1,106</u> 3,304
Shimabara Joint Training Center for National Universities in Kyushu Area	1201 Ko Kureishibaru, Shimabara City	120,286		<u>1,793</u> 2,329	
International House	12-1 Nishi Machi, Nagasaki City	3,044		<u>635</u> 1,837	<u>499</u> 1,300
University Housing		3,008			<u>910</u> 2,414
International Dormitory HORTENSIA	8-77, 8-78 Shiratori Machi, Nagasaki City		3,142		<u>722</u> 2,166
Sub Total		659,789	3,296	<u>116,825</u> 401,343	<u>3,237</u> 9,184
Total			663,085	<u>120,062</u> 410,527	

Ships

Faculty and Department	Ship's name	Material	Gross tonnage	PS	Complement
Faculty of Fisheries	Nagasaki-Marū	Steel Ship	842.00	2,800	24 instructors & staff plus 40 students
	Kakuyo-Marū	Aluminum Alloy Ship	155.00	1,428×2	15 instructors & staff plus 18 students
Student Support Department	Kinpu	FRP	1.7	90	Rescue Boat Capacity : 10

Address/TEL of Faculties, Centers, etc.

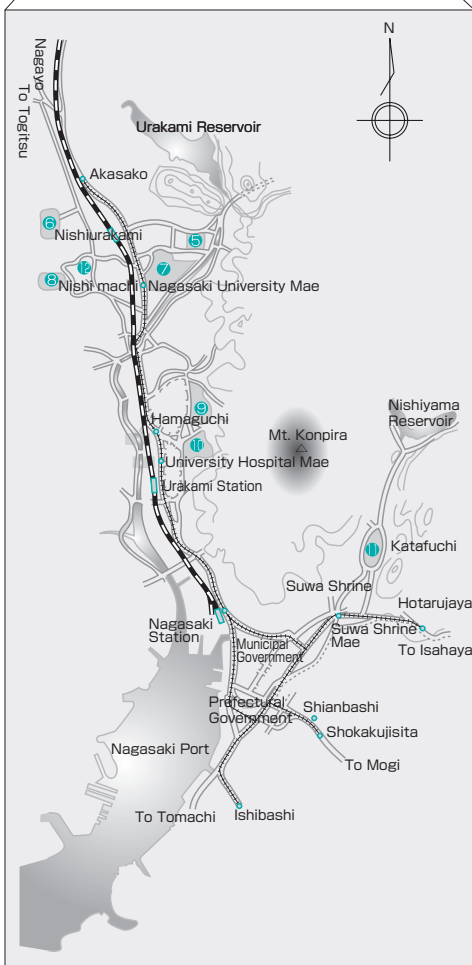
Faculties, etc.	TEL	Address
· Center for International Collaborative Research	(+81)95-819-7008	1-12-4 Sakamoto, Nagasaki City 852-8523
· Center for Industry, University and Government Cooperation		
Joint Research Division	(+81)95-819-2231	1-14 Bunkyo, Nagasaki City 852-8521
Education and Training Division	(+81)95-819-2229	//
Life-Long Education		
Intellectual Property Division	(+81)95-819-2188	//
· Center for Public Relations Strategy	(+81)95-819-2007	//
· Center for Research Promotion Strategy	(+81)95-819-2208	//
· Liaison Center for International Education	(+81)95-819-2120	//
· Organisation for Marine Science and Technology	(+81)95-819-2878	//
· Institute for East China Sea Research	(+81)95-850-7311	1551-7 Taira, Nagasaki City 851-2213
· Center of Community Development	(+81)95-819-3052	1-14 Bunkyo, Nagasaki City 852-8521
· National Research Center for the Control and Prevention of Infectious Diseases	(+81)95-819-2966	//
· Audit Office	(+81)95-819-2182	//
· Promotion Office		
Administration Bureau	(+81)95-819-2016	//
	General Planning Division	
	(+81)95-819-2032	
	Personnel Division	
	(+81)95-819-2039	
	Research Planning Division	
	(+81)95-819-2038	
	Industry-University-Government Cooperation Division	
	(+81)95-819-2050	
	Finance Planning Division	
	(+81)95-819-2060	
	Finance Management Division	
	(+81)95-819-2161	
	Procurement Division	
	(+81)95-819-2072	
	Education Support Division	
	(+81)95-819-2103	
	Student Support Division	
	(+81)95-819-2111	
	Admission Division	
	(+81)95-819-2131	

Faculties, etc.	TEL	Address
	Facilities Planning Division (+81)95-819-2137	
	Facilities Maintenance Division (+81)95-819-2141	
	Facilities Management Division (+81)95-819-2022	
	Information Planning Division (+81)95-819-2193	
	Academic Information Management Division (+81)95-819-2214	
· Center for Health and Community Medicine		1-14 Bunkyo, Nagasaki City 852-8521
· Life Science Support Center		
Radioisotope Research Center	(+81)95-819-7150	1-12-4 Sakamoto, Nagasaki City 852-8523
Biomedical Research Center	(+81)95-819-7134	//
Gene Research Center	(+81)95-819-7191	//
· Center for Information and Communication Technology	(+81)95-819-2222	1-14 Bunkyo, Nagasaki City 852-8521
· Center for Educational Innovation	(+81)95-819-2077	//
· Advanced Computing Center	(+81)95-819-2705	//
· Center for Language Studies	(+81)95-819-2077	//
· Research Center for Nuclear Weapons Abolition	(+81)95-819-2164	//
· Student Affairs Information	(+81)95-819-2072	//
· Yattemyu Desk-Office of Volunteer Opportunities	(+81)95-819-2870	//
· Center for Diversity and Inclusion	(+81)95-819-2889	//
· Center for Innovative Drug Discovery	(+81)95-819-2230	//
· Comprehensive Support Center for Regional Education	(+81)95-819-2184	//
· Student Accessibility Office	(+81)95-819-2006	//
· Research and Support Center for the Future of Fukushima	(+81)95-819-7098	//
· Institutional Research Office	(+81)95-819-2022	//
· International House	(+81)95-845-0201	12-1 Nishi Machi, Nagasaki City 852-8043
· International House, Sakamoto Bunkan	(+81)95-819-7519	1-7-1 Sakamoto, Nagasaki City 852-8102
· Center for Child Mental Health Care and Education		//
· International Dormitory HORTENSIA	(+81)95-819-0201	8-77, 8-78 Shiratori Machi, Nagasaki City 852-8042
· Seaside Training Center	(+81)95-882-8301	Shishigawa Go, Togitsu Cho, Nishisonogi Gun 851-2111
· Shimabara Joint Training Center for National Universities in Kyushu Area	(+81)957-64-2201	1201 Ko Kureishibaru, Shimabara City 855-0026
· Tokyo Office	(+81)3-6257-1940	503 Cross Office Uchisaiwaicho, 1-18-6 Nishishinbashi, Minato-ku, Tokyo 105-0003
· School of Global Humanities and Social Sciences	(+81)95-819-2934	1-14 Bunkyo, Nagasaki City 852-8521
· Faculty of Education	(+81)95-819-2263	//
Kindergarten	(+81)95-819-2288	4-23 Bunkyo, Nagasaki City 852-8131
Elementary School	(+81)95-819-2272	//

Faculties, etc.	TEL	Address
Lower Secondary School	(+81)95-819-2278	4-23 Bunkyo, Nagasaki City 852-8131
School for Children with Special Education Needs	(+81)95-845-5646	42-1 Yanagidani, Nagasaki City 852-8046
· Faculty of Economics	(+81)95-820-6300	4-2-1 Katafuchi, Nagasaki City 850-8506
· School of Medicine		
School of Medical Sciences	(+81)95-819-7004	1-12-4 Sakamoto, Nagasaki City 852-8523
School of Health Sciences	(+81)95-819-7900※	1-7-1 Sakamoto, Nagasaki City 852-8520
· University Hospital	(+81)95-819-7200※	1-7-1 Sakamoto, Nagasaki City 852-8501
· School of Dentistry	(+81)95-819-7600※	1-7-1 Sakamoto, Nagasaki City 852-8588
· School of Pharmaceutical Sciences	(+81)95-819-2413	1-14 Bunkyo, Nagasaki City 852-8521
· School of Engineering	(+81)95-819-2489	//
· Faculty of Environmental Science	(+81)95-819-2713	//
· Faculty of Fisheries	(+81)95-819-2793	//
Training Ship "Nagasaki-Maru"	(+81)90-3022-2043	Taira, Nagasaki City 851-2213
Training Ship "Kakuyo-Maru"	(+81)90-3022-2044	//
· Institute of Tropical Medicine	(+81)95-819-7800※	1-12-4 Sakamoto, Nagasaki City 852-8523
Center for Infectious Disease Research in Asia and Africa	//	//
Tropical Medicine Museum	(+81)95-819-7868	//
· Atomic Bomb Disease Institute	(+81)95-819-7004	//
· Central Library	(+81)95-819-2193	1-14 Bunkyo, Nagasaki City 852-8521
Medical Library	(+81)95-819-7013	1-12-4 Sakamoto, Nagasaki City 852-8523
Economics Library	(+81)95-820-6309	4-2-1 Katafuchi, Nagasaki City 850-8506
· Graduate School of Engineering	(+81)95-819-2489	1-14 Bunkyo, Nagasaki City 852-8521
· Graduate Schools of Fisheries and Environmental Sciences		
(Institute of Fisheries Science)	(+81)95-819-2793	1-14 Bunkyo, Nagasaki City 852-8521
(Institute of Environmental Science)	(+81)95-819-2713	//
· Graduate School of Science and Technology	(+81)95-819-2491	//
· Graduate School of Biomedical Sciences		
(Medical Sciences)	(+81)95-819-7004	1-12-4 Sakamoto, Nagasaki City 852-8523
(Health Sciences)	(+81)95-819-7900※	1-7-1 Sakamoto, Nagasaki City 852-8520
(Dental Sciences)	(+81)95-819-7600※	1-7-1 Sakamoto, Nagasaki City 852-8588
(Pharmaceutical Sciences)	(+81)95-819-2413	1-14 Bunkyo, Nagasaki City 852-8521
Medicinal Plant Garden	//	//
· Graduate School of International Health Development	(+81)95-819-7583	1-12-4 Sakamoto, Nagasaki City 852-8523
· School of Tropical Medicine and Global Health	(+81)95-819-7583	//

※Audio assistance is available after office hours.

Location Map



- ① Seaside Training Center
- ② Institute for East China Sea Research
- ③ Nomozaki Research Laboratory
- ④ Shimabara Joint Training Center for National Universities in Kyushu Area
- ⑤ Kindergarten, Elementary School, Lower Secondary School
- ⑥ School for Children with Special Education Needs
- ⑦ Headquarters for Planning and Evaluation, Center for Industry, University and Government Cooperation, Center for Public Relations Strategy, Center for Research Promotion Strategy, Liaison Center for International Education, Organisation for Marine Science and Technology, Center of Community Development, National Research Center for the Control and Prevention of Infectious Diseases, Audit Office, Administration Bureau, School of Global Humanities and Social Sciences, Faculty of Education, Graduate School of Education, School of Pharmaceutical Sciences, School of Engineering, Faculty of Environmental Science, Faculty of Fisheries, Central Library, Graduate School of Engineering, Graduate School of Fisheries and Environmental Sciences, Graduate School of Biomedical Sciences (Pharmaceutical Sciences), Medicinal Plant Garden, Center for Health and Community Medicine, Center for Information and Communication Technology, Center for Educational Innovation, Advanced Computing Center, Center for Language Studies, Research Center for Nuclear Weapons Abolition, Student Affairs Information Promotion Office, Yattemyu Desk, Center for Diversity and Inclusion, Center for Innovative Drug Discovery, Comprehensive Support Center for Regional Education, Student Accessibility Office, Research and Support Center for the Future of Fukushima, Institutional Research Office
- ⑧ International House
- ⑨ Center for International Collaborative Research School of Medicine (School of Medical Sciences) Institute of Tropical Medicine Atomic Bomb Disease Institute Graduate School of Biomedical Sciences (Medical Sciences) Graduate School of International Health Development Life Science Support Center Medical Library School of Tropical Medicine and Global Health
- ⑩ University Hospital, School of Dentistry, School of Pharmaceutical Sciences, Graduate School of Biomedical Sciences (Health Sciences · Dental Sciences), School of Medicine (School of Health Sciences, Pharmaceutical Sciences), International House, Sakamoto Bunkan, Headquarter for Nuclear Disaster Response and Preparedness, Center for Child Mental Health Care and Education
- ⑪ Faculty of Economics, Graduate School of Economics, Economics Library
- ⑫ International Dormitory HORTENSIA

Nagasaki University Logo

Formal Logo



The formal logo was designed in 1949 to raise a sense of common bonds among university members and to provide moral support for them in developing as a university. A Dutch ship representing Nagasaki, the only door for the Western culture during the Period of Isolation, has the initial letters of Nagasaki University “N.U.” on its bow as well as the Chinese character “大學” meaning “university” at its right.

With its reorganization into a National University Corporation, the existing symbol mark was modified on April 1, 2005 to establish the formal university logo.

Informal Logo



The informal logo was designed on April 1, 2005 for use in a variety of more casual occasions.

The yellow line in the center stands for “Students and Faculty”, while the green line on the right is for the “Land Area of Japan and Its Territory” with its rich natural environment. The blue line on the left represents the “Vast Sea with the International Community” surrounding the “Land Area of Japan and Its Territory”.

The points where the lines intersect show “Harmony and Contribution” among the areas, and the yellow circles are meant to express “Creativity”.

Seen as a whole, the yellow line for the “Students and Faculty” and the green line for the “Land Area of Japan and Its Territory” form the inverted Chinese character of “Person”, while the yellow line and the blue line for the “Vast Sea with the International Community” configure “Person” again. All together the lines shape the letter “N” for Nagasaki University.



Center for Public Relations Strategy,
Nagasaki University
1-14 Bunkyo, Nagasaki City 852-8521
TEL (+81)95-819-2007
URL <http://www.nagasaki-u.ac.jp/>

Published November, 2017