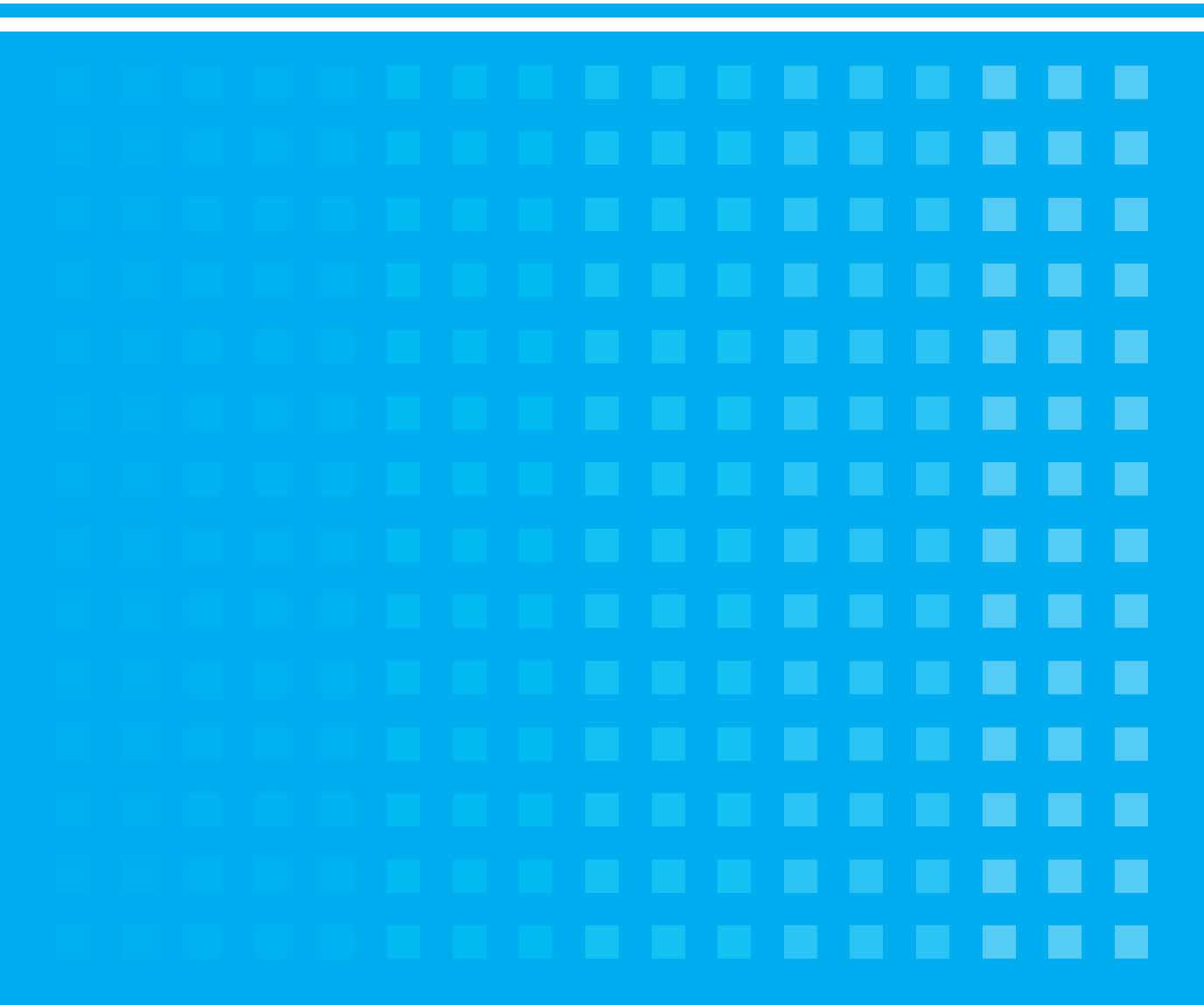


OUTLINE OF NAGASAKI UNIVERSITY 2016



Nagasaki University's Philosophy

Nagasaki University contributes to the improvement of a well-balanced society by transmitting its inheritance of the traditional culture rooted in Nagasaki, cultivating a fertile creative sense in students, and developing innovative science for world peace.

Fundamental Targets of the University

Nagasaki University, located in a region that geographically faces the Asian Continent across the East China Sea, possesses the history and memory of Dejima and is invested with a unique mission by the atomic bombing. To honor the special history and carry forward its mission, Nagasaki University seeks to develop new values and human resources with outstanding personal qualities capable of contributing to the sustainable development of a rapidly changing modern world and local community, on the basis of its unique features and tradition that have been nurtured for many years. For the promotion of bold innovations and reform under the leadership of the president, Nagasaki University has specifically set the following objectives for the Third Mid-term Target Period:

- (1) To become a world-class center of “global health” education and research that contributes to human health on a global scale through interdisciplinary integration of preventive medicine, health economics and other related areas, building on our outstanding achievements in the areas of tropical medicine, infectious diseases, and life sciences and radiation research.
- (2) To significantly improve the overall excellence of the entire university across all disciplines to establish a foundation for becoming one of the world’s best universities by promoting the sophistication and internationalization of every education and research area, enhancing the collaboration with top-level universities inside and outside Japan, reforming management, operational and personnel systems, and appropriately rearranging university resources.
- (3) To develop Nagasaki University-brand human resources who have both the ability to address local community issues and the ability to be active on the international stage where multiple cultures co-exist by promoting strategic and comprehensive educational reform for the realization of international-level education, internationalization of the campus, and a dramatic increase in the number of Japanese students studying abroad in order to respond to the needs of the globalizing society.
- (4) To develop, especially in undergraduate education, excellent and unique graduates capable of immediately responding to the issues they face based on the problem-solving ability, creative thinking ability, communication skills and other abilities expected of graduates as well as knowledge and excellence in their respective areas of expertise. To achieved this by organically integrating new student-participation-centered liberal arts education and world-standard specialized undergraduate education. Moreover, to proactively develop and introduce a new method to select new students to measure basic and versatile abilities and qualities in order to effectively connect the new university education with the reform of high school education.
- (5) To serve as the driving force of regional revitalization in the age of globalization as a community-based university by staying close to the needs of the community and providing the benefits of the results of education and research to the local administration, industry, health and medical services, education, and tourism. Moreover, to focus on and promote especially the education and research in the specific areas that will greatly contribute to the sustainable development of the community and get directly connected to global-scale issues, including marine energy, marine biotic resources, water environment, community welfare and medicine, and abolishment of nuclear weapons. Finally, to strengthen the collaboration with Fukushima that has been maintained since immediately after the Great East Japan Earthquake in order to contribute to the creation of the future for Fukushima.

Contents

Historical Sketch

Historical Sketch	2
-------------------------	---

Organization

Organizational Chart	13
Successive Presidents of Nagasaki University	15
Board of Trustees	16
Members of the Presidential Nominations Committee	16
Members of the Management Committee	16
Members of the Education and Research Council	17
Board Members and Faculty/Administrative Staff	18
Number of Board Members and Faculty/Administrative Staff	20

Education and Research

Faculties and Schools	
School of Global Humanities and Social Sciences	21
Faculty of Education	21
Faculty of Economics	21
School of Medicine	21
School of Dentistry	21
School of Pharmaceutical Sciences	21
School of Engineering	21
Faculty of Environmental Science	21
Faculty of Fisheries	21
Graduate Schools	
Graduate School of Education	22
Graduate School of Economics	22
Graduate School of Engineering	22
Graduate School of Fisheries and Environmental Sciences	22
Graduate School of Science and Technology	22
Graduate School of Biomedical Sciences	22
Graduate School of International Health Development	22
School of Tropical Medicine and Global Health	22
Academic Calendar	22

University Facilities

University Research Institute: Institute of Tropical Medicine	23
University Research Institute: Atomic Bomb Disease Institute	23
University Library	23

University Hospital	24
Schools and Kindergarten Affiliated with the Faculty of Education	26
Faculty-affiliated Institutes for Education and Research	27
Center for Health and Community Medicine	27
University Institutes for Education and Research	27
Stations of Educational Research Projects	28
International Liaison Offices	28

Distinctive Education and Research

Distinctive Research	29
Distinctive Education	29

Number of Students, etc.

Number of Students	31
FY 2016 New Students	33
FY 2015 Graduates and Their Paths after Graduation	34
Change in After-graduation Paths for the Past Five Years	35
Number of Degrees Conferred	36

International Exchange

FY 2016 International Students	37
Agreements on Academic Exchange with Overseas Institutions	38
Faculty Staff Visited Overseas Institutions and International Researchers Visited NU in FY 2015	45

Social Contribution

Center for Industry, University and Government Cooperation	46
Industry-University Cooperation	47

Finances

FY 2016 Budget	48
Funds from Outside the University	48

Campus

Bunkyo Campus	49
Sakamoto Campus	50
Katafuchi Campus	52
Welfare Facilities	53
Land · Buildings · Ships	54
Address/TEL of Faculties, Centers, etc.	56
Location Map	59
Nagasaki University Logo	60



Historical Sketch

On November 12, 1857, Dutch army surgeon Pompe van Meerdervoort initiated medical lectures in the Dutch language to government doctor Ryojyun Matsumoto and 11 other persons. This medical school called Igaku Denshusho is the origin of today's School of Medicine as well as Nagasaki University.

1857. 11	• Igaku Denshusho was established	1876. 1	• Training Center was renamed Training Center for Elementary School Teacher.
1860	• Yojosho (Sanatorium) was established for citizens with the facilities for the hospital, chemical, pharmaceuticals, library, autopsy, and clinical training. (origin of Nagasaki University Hospital)	5	• Training Center for Elementary School Teacher was renamed Nagasaki Prefectural Normal School.
1861. 9	• Yojosho (Sanatorium) was improved and Igakusho was built next to it. (Facilities for medical education institution were completed.)	6	• Nagasaki Hospital Medical Training Center was established in Nagasaki Hospital to resume medical education.
1865	• Yojosho (Sanatorium) was renamed Seitokukan School of Medicine. In October, Bunseki Kyurijyo (educational institution to teach basic science including physics and chemistry) was established.	1877. 4	• Nagasaki Prefectural Normal School was renamed Kiyo Normal School.
1868. 10	• Seitokukan School of Medicine was renamed the Nagasaki City School of Medicine.	1878. 1	• Nagasaki Hospital Medical Training Center was renamed Nagasaki Medical School.
1869	• Nagasaki City School of Medicine was renamed Nagasaki Prefectural School of Medicine.	2	• National Nagasaki Normal School was discontinued. Its buildings and equipment were transferred to Nagasaki Prefecture.
1871. 10	• The Ministry of Education held jurisdiction over Nagasaki Prefectural School of Medicine and changed its name to National Nagasaki Medical School.	6	• Kiyo Normal School was renamed Nagasaki Normal School.
1874	• Due to troop deployment in Taiwan, education function of National Nagasaki Medical School was discontinued whereas hospital function was transferred to the branch hospital.	1879. 1	• Nagasaki Medical School became prefectural and had Nagasaki Hospital become its affiliated school.
2	• National Nagasaki Normal School was established.	1883	• According to the Ordinance of the Ministry of Education, Nagasaki Medical School was designated as a Class A medical school. (Medical license could be granted after graduation without taking national examinations. Only 13 such schools existed in Japan.)
3	• Nagasaki Elementary School Teacher Training Center was established.	1884. 6	• Nagasaki Prefectural Women's Normal School was established.
1875	• Due to the completion of troop deployment in Taiwan, buildings of the branch hospital were transferred to Nagasaki Prefecture. With a subsidy from the Japanese government, Nagasaki Hospital was established.	1886. 4	• Nagasaki Prefectural Women's Normal School merged with Nagasaki Normal School and established its Women's Branch.
2	• Nagasaki Elementary School Teacher Training Center was renamed Training Center.	6	• Nagasaki Normal School, Women's Branch established its affiliated kindergarten.
11	• Elementary School affiliated with National Nagasaki Normal School was established.	6	• According to the Normal School Ordinance, Nagasaki Normal School was renamed Nagasaki Prefectural Normal School for Primary Education.

1887.	8	<ul style="list-style-type: none"> According to the Higher Middle School Ordinance, the Fifth Higher Middle School, Department of Medicine was established. Nagasaki Medical School was discontinued in September. 	1921	<ul style="list-style-type: none"> Nagasaki Prefectural School of Teacher Training for Vocational Supplementary School Education was established in Isahaya-machi.
1890.	6	<ul style="list-style-type: none"> The Division of Pharmaceutical Sciences was established in the Fifth Higher Middle School, Department of Medicine. (origin of today's School of Pharmaceutical Sciences) 	1922.	4 <ul style="list-style-type: none"> Nagasaki Prefecture donated Nagasaki Hospital to the Japanese government. Nagasaki Hospital was renamed Hospital of Nagasaki Specialized School of Medicine. Nagasaki Specialized School of Medicine Training School for Nurses and Midwives was established.
1891.	9	<ul style="list-style-type: none"> The Fifth Higher Middle School, Department of Medicine and its Division of Pharmaceutical Sciences were relocated to a new building in Urakami Yamazato-mura, Nishisonogi-gun. (origin of the later establishment of Sakamoto Campus) 	1923.	3 <ul style="list-style-type: none"> Nagasaki Specialized School of Medicine was promoted to Nagasaki Medical College by the National Medical College System and established its Specialized School of Medicine and Specialized School of Pharmaceutics. Hospital of Nagasaki Specialized School of Medicine was renamed Nagasaki Medical College Hospital and established its Training School for Nurses and Midwives.
1894.	9	<ul style="list-style-type: none"> According to the Higher School Ordinance, the Fifth Higher Middle School, Department of Medicine and its Division of Pharmaceutical Sciences were renamed the Fifth Higher School, Department of Medicine and its Division of Pharmaceutical Sciences, respectively. 	1925.	4 <ul style="list-style-type: none"> Nagasaki Medical College, Specialized School of Medicine was discontinued.
1898.	4	<ul style="list-style-type: none"> According to the Teacher Education Ordinance, Nagasaki Prefectural Normal School for Primary Education was renamed Nagasaki Prefectural Normal School. 	1928	<ul style="list-style-type: none"> The Department of Fisheries was established in Nagasaki Prefectural School of Teacher Training for Vocational Supplementary School Education. (origin of today's Faculty of Fisheries)
1901.	3	<ul style="list-style-type: none"> According to the Specialized School Ordinance, the Fifth Higher School, Department of Medicine became independent from the Fifth Higher School and established Nagasaki Specialized School of Medicine as well as its Division of Pharmaceutical Sciences. 	1929.	2 <ul style="list-style-type: none"> Nagasaki Medical College Hospital Training School for Nurses and Midwives was renamed Nagasaki Medical College Hospital Training School for Midwives and Nurses.
1903		<ul style="list-style-type: none"> Nagasaki Prefectural Nagasaki Hospital Training School for Nurses was established. 	3	<ul style="list-style-type: none"> The Advanced Course of Trade was established in Nagasaki Higher Commercial School.
1905.	3	<ul style="list-style-type: none"> Nagasaki Higher Commercial School was established. (origin of today's Faculty of Economics on Katafuchi Campus) 	12	<ul style="list-style-type: none"> Nagasaki Medical College Nomo Marine Biological Laboratory was established.
1908.	4	<ul style="list-style-type: none"> Nagasaki Prefectural Normal School, Women's Branch became independent from Nagasaki Prefectural Normal School and established Nagasaki Prefectural Women's Normal School. 	1935.	4 <ul style="list-style-type: none"> Nagasaki Prefectural School of Teacher Training for Vocational Supplementary School Education was renamed Nagasaki Prefectural School of Teacher Training for Youth School Education.
1917.	5	<ul style="list-style-type: none"> The Department of Overseas Trade was established in Nagasaki Higher Commercial School. 	1937.	4 <ul style="list-style-type: none"> Nagasaki prefectural Normal School was relocated to a new building in Nishiurakami-mura, Nishisonogi-gun. (site of today's Elementary School and Lower Secondary School affiliated with the Faculty of Education)
1920.	11	<ul style="list-style-type: none"> Research Building was donated to Nagasaki Higher Commercial School. (today's Keirin Hall) 		

1939.	5	<ul style="list-style-type: none"> • Nagasaki Medical College Temporary Specialized School of Medicine was established. 	8	<ul style="list-style-type: none"> • The atomic bomb was dropped in Nagasaki City. A total of 979 teachers and students were victimized: 897 from Nagasaki Medical College (including Specialized School of Medicine and Specialized School of Pharmaceutics), 54 from Nagasaki Normal School, 27 from Nagasaki Higher Commercial School, and one from Nagasaki Youth Normal School.
1942.	3	<ul style="list-style-type: none"> • Nagasaki Prefectural School of Teacher Training for Youth School Education, Women's School was established in Isahaya Women's High School. 		
	3	<ul style="list-style-type: none"> • Nagasaki Medical College East Asia Research Institute of Endemics was established. (origin of today's Institute of Tropical Medicine) 		
	9	<ul style="list-style-type: none"> • Nagasaki Higher Commercial School Research Building was renamed Great East Asia Economic Research Institute. 		
1943.	4	<ul style="list-style-type: none"> • According to the Normal School Education Ordinance, Nagasaki Prefectural Normal School and Nagasaki Prefectural Women's Normal School were merged to establish National Nagasaki Normal School and was promoted to specialized school category. 		
1944.	3	<ul style="list-style-type: none"> • Nagasaki Higher Commercial School was renamed Nagasaki Specialized School of Economics. 		
	4	<ul style="list-style-type: none"> • Nagasaki Specialized School of Economics established Nagasaki Specialized School of Industrial Management on its campus. • According to the Normal School Education Ordinance, Nagasaki Prefectural School of Teacher Training for Youth School Education (Men's Branch and Women's Branch) became National Nagasaki Youth Normal School, and was promoted to specialized school category. Nagasaki Prefectural School of Teacher Training for Youth School Education, Department of Fisheries was discontinued. • Nagasaki Medical College Temporary Specialized School of Medicine was renamed Nagasaki Medical College Specialized School of Medicine. 		
1945.	6	<ul style="list-style-type: none"> • Nagasaki Medical College Hospital Training School for Midwives and Nurses was renamed Nagasaki Medical College Hospital Women's School of Public Welfare. 		

• History of Reconstruction after the atomic bombing is as follows.

1946.	4	<ul style="list-style-type: none"> • Nagasaki Specialized School of Industrial Management was discontinued. Great East Asia Economic Research Institute was renamed Institute of Industry Management. • Nagasaki Medical College East Asia Research Institute of Endemics was renamed Nagasaki Medical College Research Institute of Endemics. 			<ul style="list-style-type: none"> • Nursing School was established in the School of Medicine. • Nagasaki Medical College Specialized School of Pharmaceutics, Nagasaki Specialized School of Economics, Nagasaki Normal School, and Nagasaki Youth Normal School were discontinued. 	
1947.	3	<ul style="list-style-type: none"> • Nagasaki Medical College Specialized School of Medicine was discontinued. 		6	<ul style="list-style-type: none"> • The Department of Student Advising on Public Welfare Matters was renamed the Student Advising Department. 	
	5	<ul style="list-style-type: none"> • Nagasaki Higher School (under the old system of education) was established. 		1953.	3	<ul style="list-style-type: none"> • The Faculty of Arts and Sciences was relocated to Ohashi-machi, Nagasaki City. (today's Bunkyo Campus)
1948.	4	<ul style="list-style-type: none"> • Nagasaki Youth Normal School, Department of Fisheries was reestablished. 			4	<ul style="list-style-type: none"> • The Special Advanced Courses were established in the Faculty of Fisheries.
1949.	5	<ul style="list-style-type: none"> • Under the National School Establishment Law, Nagasaki University merged with Nagasaki Medical College, Nagasaki Medical College Specialized School of Pharmaceutics, Nagasaki Specialized School of Economics, Nagasaki Normal School, Nagasaki Youth Normal School, and Nagasaki Higher School to create a new University. It then established five faculties; Arts and Sciences (Course of Elementary School Teacher Training, Course of Lower Secondary School and High School Teacher Training), Economics (Department of Economics and Department of Commerce), Medicine (School of Medicine), Pharmaceutical Sciences (School of Pharmacy), and Fisheries (Department of Fisheries, Department of Marine Products Processing, and Department of Fishery Stock Enhancement), one library, and the Research Institute of Endemics. The Faculty of Arts and Sciences and the School of Medicine further set up the Elementary School, Lower Secondary School, Kindergarten, Hospital, and Nursing School. 		1954.	4	<ul style="list-style-type: none"> • Nagasaki University, Omura Branch was renamed Nagasaki University Extension Campus. • The Advanced Course was established in the Faculty of Economics.
				1955.	4	<ul style="list-style-type: none"> • Research Division System was introduced into the School of Medicine. • Graduate School of Medical Sciences was established. • School of Midwifery was established in the School of Medicine.
				1956.	1	<ul style="list-style-type: none"> • The Student Advising Department was renamed the Student Services Department.
					4	<ul style="list-style-type: none"> • The Advanced Course was established in the School of Pharmaceutical Sciences.
				1960.	3	<ul style="list-style-type: none"> • Nagasaki Medical College was discontinued.
					4	<ul style="list-style-type: none"> • The Advanced Course was established in the Faculty of Fisheries.
				1962.	4	<ul style="list-style-type: none"> • Atomic Bomb Disease Institute was established in the School of Medicine.
				1964.	4	<ul style="list-style-type: none"> • Faculty of Liberal Arts was established. (Extension Campus was discontinued) • Construction of the training ship "Nagasaki-Maru" of the Faculty of Fisheries was completed.
1950.	3	<ul style="list-style-type: none"> • Nagasaki Higher School was discontinued. 				
	5	<ul style="list-style-type: none"> • The Departments of General Education in Omura and Nagasaki Campuses were restructured to establish Nagasaki University, Omura Branch. 				
1951.	3	<ul style="list-style-type: none"> • Junior College of Business was established. 				

1965.	3	<ul style="list-style-type: none"> • The Advanced Course in the School of Pharmaceutical Sciences was discontinued. 	1971.	2	<ul style="list-style-type: none"> • The libraries were restructured. (Branch libraries of the Faculty of Education, the Faculty of Fisheries, the School of Pharmaceutical Sciences, and the Institute of Tropical Medicine were discontinued while branch libraries of the Faculty of Economics and the School of Medicine were still continued.)
	4	<ul style="list-style-type: none"> • Graduate School of Pharmaceutical Sciences was established. • The Advanced Course was established in the Faculty of Arts and Sciences. 		4	<ul style="list-style-type: none"> • School for Handicapped Children was established in the Faculty of Education. • The Department of Commerce, Faculty of Economics was renamed the Department of Management. • The Department of Pharmaceutical Chemistry was established in the Graduate School of Pharmaceutical Sciences.
1966.	4	<ul style="list-style-type: none"> • Health Center was established. • The School of Engineering (Departments of Mechanical Engineering and Electrical Engineering) was established. • Faculty of Arts and Sciences was renamed the Faculty of Education. The Advanced Course in the Faculty of Arts and Sciences was renamed the Advanced Course in the Faculty of Education. 			
1967.	4	<ul style="list-style-type: none"> • School for Handicapped Children Teacher Training Course was established in the Teacher Education Division, Faculty of Education. • The Department of Pharmaceutical Chemistry was established in the School of Pharmaceutical Sciences. • The Department of Structural Engineering was established in the School of Engineering. 	1972.	4	<ul style="list-style-type: none"> • The Department of Industrial Chemistry was established in the School of Engineering.
	6	<ul style="list-style-type: none"> • Research Institute of Endemics was renamed the Institute of Tropical Medicine. • The Fisheries Laboratory was established in the Faculty of Fisheries. 		5	<ul style="list-style-type: none"> • Atomic Bomb Medical Information Center was established in the School of Medicine. • Medicinal Plant Garden was established in the School of Pharmaceutical Sciences.
1968.	4	<ul style="list-style-type: none"> • The Department of Trade was established in the Faculty of Economics. 	1973.	4	<ul style="list-style-type: none"> • The Departments of Fishing, Fish Production, and Fish Breeding of the Faculty of Fisheries were restructured to establish the Department of Fisheries. • The Advanced Course in Civil Engineering was established in the School of Engineering. • Educational Engineering Center was established in the Faculty of Education.
1969.	4	<ul style="list-style-type: none"> • The Department of Civil Engineering was established in the School of Engineering. 			
	12	<ul style="list-style-type: none"> • Electric Computer Center was established. 	1974.	4	<ul style="list-style-type: none"> • The Departments of Fishing, Fish Production, and Fish Breeding of the Graduate School of Fisheries were restructured to established the Department of Fisheries. • The Advanced Course in Materials Science and Engineering was established in the School of Engineering. • The Kindergarten Teacher Training Course was established in the Teacher Education Division, Faculty of Education.
1970.	4	<ul style="list-style-type: none"> • The Advanced Courses in the Faculty of Fisheries were discontinued. (The Advanced Courses in Fishing, Fish Production, and Fish Breeding were discontinued, leaving in operation only the Advanced Course in Officer Training, with its name changed to the Advanced Course in Deep-sea Fishing.) • Graduate School of Fisheries was established. • The Department of Materials Science and Engineering was established in the School of Engineering. 			

		<ul style="list-style-type: none"> • Atomic Bomb Medical Information Center was renamed the Scientific Data Center for Atomic Bomb Disaster. 	11	<ul style="list-style-type: none"> • Drainage Analysis Science Center was established. (Drainage Analysis Center was discontinued.) 	
1975.	4	<ul style="list-style-type: none"> • The Reference Room for the Tropical Medicine was established in the Institute of Tropical Medicine. 	1980.	4	<ul style="list-style-type: none"> • Laboratory Animal Center for Biomedical Research was established in the School of Medicine.
	6	<ul style="list-style-type: none"> • Construction of the training ship “Kakuyo-Maru” of the Faculty of Fisheries was completed. 			<ul style="list-style-type: none"> • The preparatory office for founding of the University Hospital of the School of Dentistry was established.
1976.	4	<ul style="list-style-type: none"> • Drainage Analysis Center was established. 	1981.	4	<ul style="list-style-type: none"> • The Department of Electronic Engineering was established in the Graduate School of Engineering Science.
		<ul style="list-style-type: none"> • The Department of Electronic Engineering was established in the School of Engineering. 			<ul style="list-style-type: none"> • University Hospital of the School of Dentistry was established.
		<ul style="list-style-type: none"> • Graduate School of Engineering Science was established. 	1982.	4	<ul style="list-style-type: none"> • The preparatory office for founding of the University Hospital of the School of Dentistry was discontinued.
1977.	4	<ul style="list-style-type: none"> • Shimabara Joint Training Center for National Universities in Kyushu Area was established. 			<ul style="list-style-type: none"> • The Divisions of Economics & Law and Management Information, Department of Commerce and Economics, Junior College of Business were reorganized into the Divisions of Economics, Economic Law, and Management Information.
		<ul style="list-style-type: none"> • The Department of Civil Engineering was established in the Graduate School of Engineering Science. 	1983.	4	<ul style="list-style-type: none"> • The Department of Mechanical Engineering II was established in the Graduate School of Engineering Science.
		<ul style="list-style-type: none"> • The Advanced Courses (Mechanical Engineering, Electrical Engineering, and Structural Engineering) in the School of Engineering were discontinued. 			<ul style="list-style-type: none"> • The preparatory office for founding of the School of Allied Medical Sciences was established.
		<ul style="list-style-type: none"> • The preparatory office for founding of the School of Dentistry was established. 			<ul style="list-style-type: none"> • International House was established.
		<ul style="list-style-type: none"> • The Department of Commerce, Junior College of Business was renamed the Department of Commerce and Economics (Economics & Law and Management Information). 	1984.	4	<ul style="list-style-type: none"> • School of Allied Medical Sciences (Department of Nursing) was established.
1978.	3	<ul style="list-style-type: none"> • RI Center was established. 			<ul style="list-style-type: none"> • The preparatory office for founding of the School of Allied Medical Sciences was discontinued.
	4	<ul style="list-style-type: none"> • The Department of Mechanical Engineering II was established in the School of Engineering. 			<ul style="list-style-type: none"> • Junior College of Business was renamed the Junior College of Commerce.
1979.	4	<ul style="list-style-type: none"> • Animal Research Center for Tropical Infections was established in the Institute of Tropical Medicine. 			<ul style="list-style-type: none"> • 18 divisions of the Department of Fisheries, Faculty of Fisheries were reorganized into six large ones.
	5	<ul style="list-style-type: none"> • The Branch Library of the School of Medicine was renamed the Medical Library. 			<ul style="list-style-type: none"> • The Departments of Physical Therapy and Work Therapy were established in the School of Allied Medical Sciences.
	10	<ul style="list-style-type: none"> • Information Center was established (Electric Computer Center was discontinued). 		10	
		<ul style="list-style-type: none"> • The Department of Dentistry, School of Dentistry was established. 			
		<ul style="list-style-type: none"> • The preparatory office for founding of the School of Dentistry was discontinued. 			

1986.	4	<ul style="list-style-type: none"> • Nursing School, School of Medicine was discontinued. • Graduate School of Dentistry was established. • The Departments of Pharmacy and Pharmaceutical Chemistry of the Graduate School of Pharmaceutical Sciences were restructured to establish the Department of Medical Pharmacy (Master's and Doctoral courses). • The Departments of Pharmacy and Pharmaceutical Chemistry of the School of Pharmaceutical Sciences were restructured to establish the Department of Pharmaceutical Sciences. • Center for Practical Education Research and Training was established in the Faculty of Education. (Educational Engineering Center was discontinued.) 			
	6	<ul style="list-style-type: none"> • Center for Measurement Analysis was established. • Center for International Student Advising was established. 			
	9	<ul style="list-style-type: none"> • Environmental Protection Center was established. (Drainage Analysis Science Center was discontinued.) 			
1987.	4	<ul style="list-style-type: none"> • The School of Midwifery, School of Medicine was discontinued. • The Department of Marine Science and Development was established in the Graduate School of Engineering Science (Doctoral course). • The Diploma Course (Midwifery) was established in the School of Allied Medical Sciences. 			
1988.	4	<ul style="list-style-type: none"> • Graduate School of Marine Science and Engineering was established (Doctoral course). • The Department of Marine Science and Development was transferred from the Graduate School of Engineering Science to the Graduate School of Marine Science and Engineering. 			
					<ul style="list-style-type: none"> • The Departments of Electric Engineering and Electronic Engineering of the School of Engineering were restructured to establish the Department of Electrical Engineering and Computer Science. • Information Science Center was established. (Information Center was discontinued.)
			1989.	5	<ul style="list-style-type: none"> • Institute of Tropical Medicine was promoted to the National Collaborative Institute.
			1990.	4	<ul style="list-style-type: none"> • The Departments of Mechanical Engineering and Mechanical Engineering II of the School of Engineering were restructured to establish the Department of Mechanical Systems Engineering.
				6	<ul style="list-style-type: none"> • Joint Research Center was established.
			1991.	4	<ul style="list-style-type: none"> • In the Faculty of Economics, eight divisions of the Department of Economics were reorganized into three large ones; eight divisions of the Department of Business were reorganized into two large ones, and six divisions of the Department of Trade were reorganized into two large ones of the Department of Finance. • In the School of Engineering, four divisions of the Department of Structural Engineering were reorganized into two large ones; four divisions of the Department of Civil Engineering were reorganized into two large ones; four divisions of the Department of Materials Science and Engineering were reorganized into two large ones; and four divisions of the Department of Industrial Chemistry were reorganized into two large ones of the Department of Applied Chemistry. • Radioisotope Research Center was established. (RI Center was discontinued.)
			1992.	4	<ul style="list-style-type: none"> • The Departments of Electrical Engineering and Electronic Engineering of the Graduate School of Engineering Science were restructured to establish the Department of Electrical Engineering and Computer Science.
			1993.	4	<ul style="list-style-type: none"> • Education and Research Center for Life-long Learning was established.
			1994.	4	<ul style="list-style-type: none"> • Graduate School of Education was established. • The Advanced Course in the Faculty of Education was discontinued.

		<ul style="list-style-type: none"> • The Departments of Mechanical Engineering and Mechanical Engineering II of the Graduate School of Engineering Science were restructured to establish the Department of Mechanical Systems Engineering. 			<ul style="list-style-type: none"> • The Divisions of Physical Education and Home Economics were established in the Department of Curriculum & Teaching, Graduate School of Education.
	6	<ul style="list-style-type: none"> • 10 divisions of the Institute of Tropical Medicine were reorganized into three large ones. 			<ul style="list-style-type: none"> • The Department of Electrical Engineering and Computer Science of the School of Engineering was reorganized into the Department of Electrical and Electronic Engineering and the Department of Computer and Information Sciences.
1995.	4	<ul style="list-style-type: none"> • Graduate School of Economics was established. • The Advanced Course in the Faculty of Economics was discontinued. • The Department of Industrial Chemistry of the Graduate School of Engineering Science was renamed the Department of Applied Chemistry. 			<ul style="list-style-type: none"> • Center for Instrumental Analysis was established. (Center for Measurement Analysis was discontinued.)
1996.	5	<ul style="list-style-type: none"> • International Student Center was established. (Center for International Student Advising was discontinued.) 	1999.	4	<ul style="list-style-type: none"> • The Department of Clinical Pharmacy was established in the Graduate School of Pharmaceutical Sciences. • The position of Vice President was established. (Director of the Student Services Department was discontinued.) • The Student Affairs Department was established in accordance with the merger of the Administration Bureau with the Student Services Department (Student Services Department was discontinued).
1997.	4	<ul style="list-style-type: none"> • Atomic Bomb Disease Institute was established in the School of Medicine. (Atomic Bomb Disease Institute and Scientific Data Center for Atomic Bomb Disaster were discontinued.) • Marine Research Institute was established in the Faculty of Fisheries. (Fisheries laboratory was discontinued.) • Tropical Information Center was established in the Institute of Tropical Medicine. (The reference Room for the Tropical Medicine was discontinued.) 			<ul style="list-style-type: none"> • The Department of Infectious Research was established in the Graduate School of Medical Sciences.
	10	<ul style="list-style-type: none"> • Faculty of Environmental Studies was established. • Faculty of Liberal Arts was discontinued. • The Departments of Economics, Business, and Finance of the Faculty of Economics were restructured to establish the Department of General Economics. 	2000.	4	<ul style="list-style-type: none"> • Graduate School of Science and Technology was established. • Gene Research Center was established. • Junior College of Commerce was discontinued.
1998.	4	<ul style="list-style-type: none"> • The Elementary School Teacher Training Course, Lower Secondary School Teacher Training Course, Disabled Children's School Teacher Training Course, and Kindergarten Teacher Training Course of the Faculty of Education were reorganized into the Teacher Education Division and the Information Technology and Cultural Studies Division. 	2001.	4	<ul style="list-style-type: none"> • The Department of Marine Production and the Department of Marine Resource of the Graduate School of Marine Science and Engineering were reorganized into the Department of Marine Science and Technology and the Department of Material Science, respectively. • Center for Education Research and Training was established. (Center for Practical Education Research and Training was discontinued.)

		<ul style="list-style-type: none"> • Research Center for Tropical Infectious Diseases was established in the Institute of Tropical Medicine. (Tropical Disease Information Center was discontinued.) • One large and 31 small divisions of the School of Medical Sciences, School of Medicine were reorganized into six large ones. 			
	10	<ul style="list-style-type: none"> • The School of Health Sciences was established in the School of Medicine. 			
2002.	4	<ul style="list-style-type: none"> • Graduate School of Environmental Studies was established. • Graduate School of Biomedical Sciences was established. • Research and Development Center for Higher Education was established. • Admission Center was established. • Six large divisions of the School of Medical Sciences, School of Medicine were reorganized into four large ones. • 18 small divisions of the Department of Dentistry, School of Dentistry were reorganized into three large ones. • Four large divisions of the Department of Pharmaceutical Sciences, School of Pharmaceutical Sciences were reorganized into two large ones. 	12	<ul style="list-style-type: none"> • The Departments of Policies for the Human-Environmental Symbiosis (Master's course), Environmental Conservation and Planning (Master's course), and Environmental Science (Doctoral course) were established in the Graduate School of Science and Technology. • The Diploma Course in the Faculty of Fisheries was discontinued. • Intellectual Property Center was established. • Information Media Center was established. (Information Science Center was discontinued) • Joint Research Center was established. (Joint Research Center, Center for Instrumental Analysis, and Environmental Protection Center were discontinued.) 	
		<ul style="list-style-type: none"> • Atomic Bomb Disease Institute and the Medicinal Plant Garden were transferred from the School of Medicine to the Graduate School of Biomedical Sciences. • Center for Frontier Life Sciences was established. (Radioisotope Research Center, Gene Research Center, and Biomedical Research Center were discontinued.) 	2005.	4	<ul style="list-style-type: none"> • The Headquarters for Planning and Evaluation was established. • Center for International Collaborative Research was established. • Institute for East China Sea Research was established. (Marine Research Center, Faculty of Fisheries was discontinued.) • Center for Total Human Education and Child Welfare was established. (available for a limited time only) • School of Allied Medical Sciences was discontinued.
2003.	4	<ul style="list-style-type: none"> • University Hospital of Medicine and Dentistry were established (University Hospitals of the School of Medicine and the School of Dentistry were restructured). 	2006.	2	<ul style="list-style-type: none"> • The Department of Marine Science and Technology, Graduate School of Science and Technology was discontinued.
	10			4	<ul style="list-style-type: none"> • Master of Tropical Medicine and Master of Health Sciences were established in the Graduate School of Biomedical Sciences. • The Department of Pharmacy, School of Pharmaceutical Sciences was reorganized into Pharmacy (six-year program) and Pharmaceutical Sciences (four-year program).
2004.	4	<ul style="list-style-type: none"> • Nagasaki University was established by the Nagasaki University, National University Corporation under the National University Corporation Law. • The Department of Managerial Decision Making was established in the Graduate School of Economics (Doctoral course). 		5	<ul style="list-style-type: none"> • Graduate School of Dentistry was discontinued.
				7	<ul style="list-style-type: none"> • Nagasaki University Organization for Cooperation of Industry, University, and Government was established.
			2007.	2	<ul style="list-style-type: none"> • Graduate School of Pharmaceutical Sciences was discontinued.

	3	<ul style="list-style-type: none"> • Graduate School of Environmental Studies was discontinued. 			
2008.	4	<ul style="list-style-type: none"> • The Information Technology and Cultural Studies Division of the Faculty of Education was merged into the Teacher Education Division. • The Department of Teaching Skills Development and Practice (Master's Course) and the Department of Teaching Training and Practice (Professional Degree Program) were established in the Graduate School of Education. • Graduate School of International Health Development was established. • Center for Infectious Disease Research in Asia and Africa and Tropical Medicine Museum were established in the Institute of Tropical Medicine. Research Center for Tropical Infectious Diseases was discontinued. • Health Center was reorganized into the Center for Health and Community Medicine. 	2011.	4	<ul style="list-style-type: none"> • School of Engineering's seven Departments (Mechanical Systems Engineering, Electrical and Electronic Engineering, Computer and Information Sciences, Structural Engineering, Civil Engineering, Materials Science and Engineering, and Applied Chemistry) were restructured into one Department, Engineering. • Graduate School of Science and Technology was restructured to establish Graduate School of Engineering and Graduate School of Fisheries Science and Environmental Studies. • Institute of Tropical Medicine's three Departments were restructured into four Department • Institute for East China Sea Research was restructured to establish Institute for East China Sea Research affiliated with Graduate School of Fisheries Science and Environmental Studies. • Center for Total Human Education and Child Welfare was discontinued.
2009.	4	<ul style="list-style-type: none"> • University Hospital of Medicine and Dentistry was restructured and renamed University Hospital. 		6	<ul style="list-style-type: none"> • Center for Industry, University and Government Cooperation was established. (Organization for Cooperation of Industry, University, and Government, Intellectual Property Center Joint Research, Center and Education and Research Center for Lifelong Learning were discontinued.)
	10	<ul style="list-style-type: none"> • Center for Gender Equality was established. (available for a limited time only) 			
2010.	4	<ul style="list-style-type: none"> • Master's Course in Pharmaceutical Sciences was established in the Graduate School of Biomedical Sciences. • Center for Public Relations Strategy was established. • Center for International Collaborative Research Nagasaki University Tokyo Office was established. • Advanced Computing Center was established. 		12	<ul style="list-style-type: none"> • Research Promotion Section was established.
	11	<ul style="list-style-type: none"> • Center for International Collaborative Research Nagasaki University Tokyo Office was restructured to establish Nagasaki University Tokyo Office. 	2012.	1	<ul style="list-style-type: none"> • Medical Innovation Center was established.
				4	<ul style="list-style-type: none"> • Master and Doctoral courses of Pharmaceutical Sciences were established in the Graduated School of Biomedical Sciences. • The Graduate School of Medical Sciences closed. • Center for Language Studies was established. • Research Center for Nuclear Weapons Abolition was established.
				12	<ul style="list-style-type: none"> • Center for Regional Educational Partnerships was established.
			2013.	4	<ul style="list-style-type: none"> • Atomic Bomb Disease Institute affiliated with Graduate School of Biomedical Sciences was restructured to establish Atomic Bomb Disease Institute attached to Nagasaki University.
				7	<ul style="list-style-type: none"> • Animal Research Center for Tropical Infectious was discontinued.

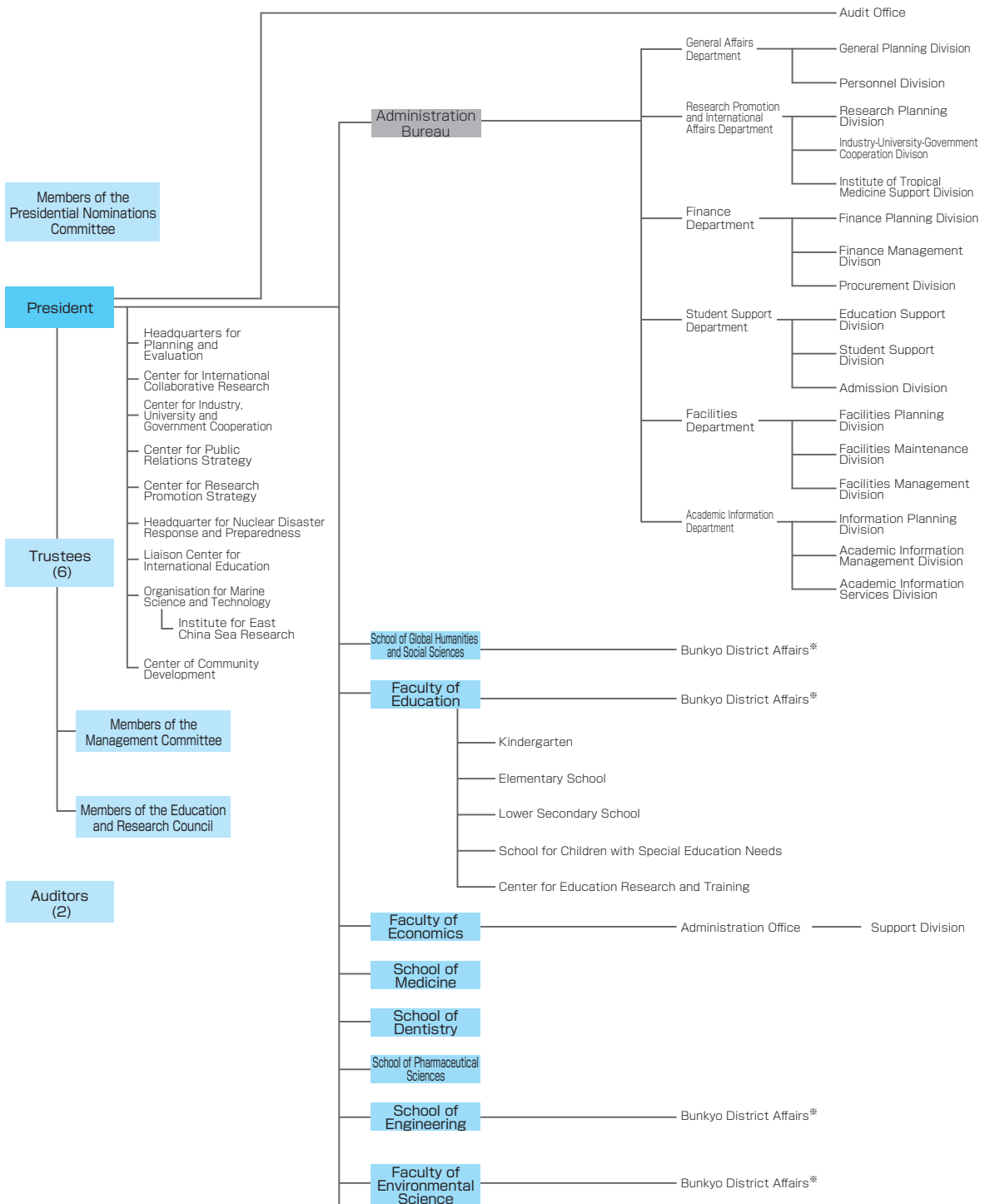
8	<ul style="list-style-type: none"> • Student Accessibility Office was established. 	2016. 4	<ul style="list-style-type: none"> • Division of Disaster and Radiation Medical Sciences (Master's course) was established in the Graduate School of Biomedical Sciences.
10	<ul style="list-style-type: none"> • Liaison Center for International Education was established. (International Student Center was discontinued.) • Center for Educational Innovation was established. (Research and Development Center for Higher Education was integrated with Admission Center.) 		<ul style="list-style-type: none"> • Division of Advanced Preventive Medical Sciences (Doctoral course) was established in the Graduate School of Biomedical Sciences.
2014. 4	<ul style="list-style-type: none"> • Center for Research Promotion Strategy was established. (Research Promotion Section was discontinued.) • School of Global Humanities and Social Sciences was established. • Department of Teaching Training and Practice, Graduate School of Education was reorganized. (Department of Teaching Skills Development and Practice was unified into Department of Teaching Training and Practice.) • Center for Information and Communication Technology was established. (Information Media Center was discontinued.) • Research and Support Center for the Future of Fukushima was established. 		<ul style="list-style-type: none"> • Headquarter for Nuclear Disaster Response and Preparedness was established. • Organisation for Marine Science and Technology was established. • Institute for East China Sea Research on Graduate School of Fisheries and Environmental Sciences was restructured to Institute for East China Sea Research in Organisation for Marine Science and Technology.
9	<ul style="list-style-type: none"> • Center for Promotion of Collaborative Research on Radiation and Environment Health Effects affiliated with Atomic Bomb Disease Institute was established. 		
2015. 4	<ul style="list-style-type: none"> • School of Tropical Medicine and Global Health (Master's course) was established. (Graduate School of Biomedical Sciences, Master of Tropical Medicine and Graduate School of International Health Development were restructured.) • Department of Environmental Science (Master's course) was established in the Graduate school of Fisheries and Environmental Sciences. (Department of Policies for Human-Environmental Symbiosis and Department of Environmental Conservation and Planning were restructured.) • Institutional Research Office was established. 		
2015. 9	<ul style="list-style-type: none"> • Center for Gender Equality was restructured to Center for Diversity and Inclusion. 		
2015. 10	<ul style="list-style-type: none"> • Center of Community Development was established. 		

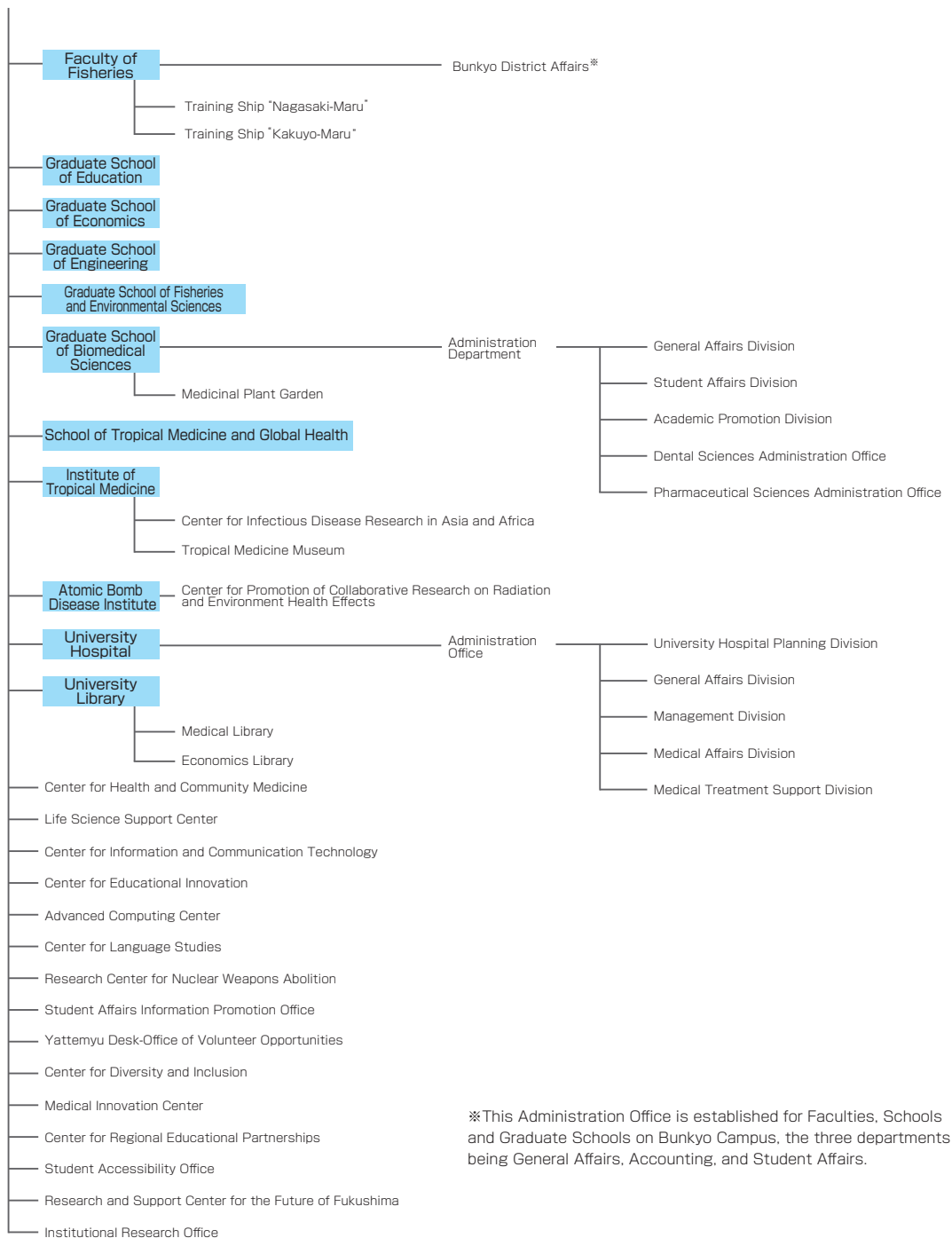


Organization

Organizational Chart

2016. 5. 1





Successive Presidents of Nagasaki University

1 st	Kiyoshi Takase	(June 29,1949 June 5,1952)
(Acting President)	Shingo Ikeda	(June 6,1952 November 17,1952)
2 nd	Kohei Koyano	(November 18,1952 November 17,1958)
3 rd	Seiichi Kitamura	(November 18,1958 November 17,1962)
4 th	Nariyuki Izumi	(November 18,1962 November 17,1966)
5 th	Toshiro Goto	(November 18,1966 April 3,1969)
(Acting President)	Michinori Kurihara	(April 4,1969 May 6,1969)
6 th	Masayuki Nakatsuka	(May 7,1969 July 31,1974)
(Acting President)	Masato Yasuda	(August 1,1974 October 10,1974)
7 th	Kanesaburo Gushima	(October 11,1974 October 10,1980)
8 th	Hideo Fukumi	(October 11,1980 October 10,1984)
9 th	Masato Yasuda	(October 11,1984 October 10,1988)
10 th	Hideo Tsuchiyama	(October 11,1988 October 10,1992)
11 th	Tetsuo Yokoyama	(October 11,1992 October 10,1998)
12 th	Takayoshi Ikeda	(October 11,1998 October 10,2002)
13 th	Hiroshi Saito	(October 11,2002 October 10,2008)
14 th	Shigeru Katamine	(October 11,2008 Present)

Board of Trustees

2016. 4. 1

Chairperson Shigeru Katamine	President
Shigeru Kohno	Trustee (General Affairs)
Kiyotaka Ido	Trustee (Finance)
Nobuo Matsusaka	Trustee (Educational Affairs)
Hirotohi Fukunaga	Trustee (Research)
Shunichi Yamashita	Trustee (International Affairs and University Research Institutes)
Hideaki Masuzaki	Trustee (Hospital)

Members of the Presidential Nominations Committee

2016. 4. 28

Chairperson Michitami Yano	Honorary Director National Hospital Organization Nagasaki Medical Center
Hirotohi Fukunaga	Trustee
Nobuo Matsusaka	Trustee
Hiromasa Okada	Dean, Faculty of Economics
Isao Shimokawa	Dean, School of Medicine
Takashi Sawase	Dean, School of Dentistry
Naotaka Kuroda	Dean, School of Pharmaceutical Sciences
Takashi Fujiki	Dean, Faculty of Education
Yasuhiro Shimizu	Dean, Graduate School of Engineering
Takao Hotokebuchi	Unification Director of Saga Memorial Hospital
Noriko Araki	Principal of Nagasaki Prefectural Isahaya High School
Tomihisa Taue	Mayor of Nagasaki
Masatoshi Miyawaki	Chairperson, The Eighteenth Bank, Ltd.
Akira Takata	President, A and Live, Ltd

Members of the Management Committee

2016. 4. 1

Chairperson Shigeru Katamine	President
Shigeru Kohno	Trustee
Kiyotaka Ido	Trustee
Hirotohi Fukunaga	Trustee
Hideaki Masuzaki	Trustee
Norihiro Nakamura	Dean, School of Global Humanities and Social Sciences
Takashi Fujiki	Dean, Faculty of Education
Isao Shimokawa	Dean, School of Medicine
Katsuyasu Tachibana	Dean, Faculty of Fisheries
Yasuhiro Shimizu	Dean, Graduate School of Engineering
Kiyoko Ikegami	Professor at the Graduate School of Nihon University
Takao Hotokebuchi	Unification Director of Saga Memorial Hospital

Izumi Kobayashi	Director, ANA Holdings Inc.
Ryoki Sugita	Special Adviser, Japan Center for Economic Research
Hodo Nakamura	Governor of Nagasaki
Tomihisa Taue	Mayor of Nagasaki
Noriko Araki	Principal of Nagasaki Prefectural Isahaya High School
Masatoshi Miyawaki	Chairperson, The Eighteenth Bank, Ltd.
Yoichiro Harada	Chief member of Mitsubishi Aircraft Corporation
Michitami Yano	Honorary Director National Hospital Organization Nagasaki Medical Center
Akira Takata	President, A and Live, Ltd

Members of the Education and Research Council

2016. 4. 1

Chairperson	Shigeru Katamine	President
	Shigeru Kohno	Trustee
	Nobuo Matsusaka	Trustee
	Hirotooshi Fukunaga	Trustee
	Shunichi Yamashita	Trustee
	Hideaki Masuzaki	Trustee
	Kiyotaka Ido	Director-General, Administration Bureau
	Norihiro Nakamura	Dean, School of Global Humanities and Social Sciences
	Takashi Fujiki	Dean, Faculty of Education
	Hikomasa Okada	Dean, Faculty of Economics
	Isao Shimokawa	Dean, School of Medicine
	Takashi Sawase	Dean, School of Dentistry
	Naotaka Kuroda	Dean, School of Pharmaceutical Sciences
	Kimihiro Yamashita	Dean, Faculty of Environmental Studies
	Katsuyasu Tachibana	Dean, Faculty of Fisheries
	Yasuhiro Shimizu	Dean, Graduate School of Engineering
	Atsushi Hagiwara	Dean, Graduate School of Fisheries and Environmental Sciences
	Kiyoshi Kita	School of Tropical Medicine and Global Health
	Kouichi Morita	Dean, Institute of Tropical Medicine
	Yuji Nagayama	Dean, Atomic Bomb Disease Institute
	Hideaki Nakata	Director, University Library
	Toshiaki Inada	Director, Center for Language Studies
	Goro Tanaka	Dean, School of Health Sciences, School of Medicine
	Tatsujiro Suzuki	Director, Research Center for Nuclear Weapons Abolition

Board Members and Faculty/Administrative Staff

2016. 5. 1

Board Members	
President	Shigeru Katamine
Trustee (General Affairs)	Shigeru Kohno
Trustee (Finance)	Kiyotaka Ido
Trustee (Educational Affairs)	Nobuo Matsusaka
Trustee (Reserch)	Hiroto Fukunaga
Trustee (International Affairs and University Research Institutes)	Shunichi Yamashita
Trustee (Director, University Hospital)	Hideaki Masuzaki
Auditor	Toshinori Watanabe
Auditor (Part time)	Kiichiro Hiramatsu

Vice Presidents	
Accreditation	Shigeru Kohno
Educational Affairs	Nobuo Matsusaka
Research Planning	Hiroto Fukunaga
Fukushima Project	Shunichi Yamashita
Public Relations	Norio Fukao
Information Technology	Yoshihiro Murata
Student Affairs	Ibuki Horiuchi
Admission Affairs	Yoshimasa Hoshino
Industry-University Cooperation	Susumu Shirabe
Life Science	Toshifumi Komori
International Exchange	Akhide Tada
Environment · Facilities	Takahiko Yamashita
Diversity and Inclusion	Masako Ito
Marine Research	Hideaki Nakata

Special Aide to the President	
Social Contribution	Susumu Shirabe
Science and Technology	Hideaki Nakata

Headquarters for Planning and Evaluation	
Director	Shigeru Katamine

Center for International Collaborative Research	
Director	Shunichi Yamashita

Center for Industry, University and Government Cooperation	
Director	Susumu Shirabe

Center for Public Relations Strategy	
Director	Norio Fukao

Center for Research Promotion Strategy	
Director	Hiroto Fukunaga

Headquarter for Nuclear Disaster Response and Preparedness	
Director	Shunichi Yamashita

Liaison Center for International Education	
Director	Shunichi Yamashita
Director, Liaison Center for International Education Administration Office	Takeshi Tokutome

Organisation for Marine Science and Technology	
Director	Hideaki Nakata
Director, Institute for East China Sea Research	Kiyoshi Soyano

Center of Community Development	
Director	Nobuo Matsusaka

Audit Office	
Director	Hiroyuki Yamada

Administration Bureau	
Director-General, Administration Bureau	Kiyotaka Ido
Director, General Affairs Department	Kunihiko Narita
Director, General Planning Division	Masaru Abe
Personnel Division	Yasushi Asada
Director, Research Promotion and International Affairs Department	Masahiko Yamasaki
Director, Research Planning Division	Keiichi Anan
Industry-University-Government Cooperation Division	Tadakazu Takayanagi
Director, Institute of Tropical Medicine Support Division	Yusuke Ueda
Director, Finance Department	Shingo Nishida
Director, Finance Division	Syuji Tokikawa
Director, Accounting Division	Shinichi Mitsumoto
Director, Procurement Division	Osamu Takahira
Director, Student Support Department	Keiichi Yamano
Director, Education Support Division	Kiyoshi Tsuge
Director, Student Support Division	Munehisa Urakawa
Director, Admission Division	Yasuyuki Honda
Director, Facilities Department	Tatsuyuki Tsutsumi
Director, Facilities Planning Division	Masayoshi Okano
Director, Facilities Maintenance Division	Eishi Matsushita
Director, Environmental Maintenance Division	Koji Yamaguchi
Director, Academic Information Department	Tsunenobu Ueno
Director, Information Planning Division	Syoichi Kiyokawa
Director, Academic Information Management Division	Hiroto Kondo

Faculties and Schools	
Bunkyo District Affairs	
Director, Bunkyo District Affairs	Shuzo Nakamura
Director, Accounting Division	Kazunori Tsuchihashi
Director, Student Affairs Division	Takafumi Matsuo

School of Global Humanities and Social Science	
Dean, School of Global Humanities and Social Sciences	Norihiro Nakamura

Faculty of Education	
Dean, Faculty of Education	Takashi Fujiki
Principal, Kindergarten	Miki Omachi
Principal, Elementary School	Satoshi Tomino
Principal, Lower Secondary School	Hiroshi Mori
Principal, School for Children with Special Education Needs	Tsuneto Sato
Director, Center for Education Research and Training	Noboru Fujimoto

Faculty of Economics	
Dean, Faculty of Economics	Hiromasa Okada
Director, Faculty of Economics Support Division	Ryoji Sato
School of Medicine	
Dean, School of Medicine	Isao Shimokawa
School Dentistry	
Dean, School of Dentistry	Takashi Sawase
School of Pharmaceutical Sciences	
Dean, School of Pharmaceutical Sciences	Naotaka Kuroda
School of Engineering	
Dean, School of Engineering	Yasuhiro Shimizu
Faculty of Environmental Science	
Dean, Faculty of Environmental Science	Kimihiro Yamashita
Fisheries	
Dean, Faculty of Fisheries	Katsuyasu Tachibana
Captain, Training Ship "Nagasaki-Marui"	Yasuhiro Morii
Captain, Training Ship "Kakuyo-Marui"	Takashi Aoshima
Graduate Schools	
Dean, Graduate School of Education	Takashi Fujiki
Dean, Graduate School of Economics	Hiromasa Okada
Dean, Graduate School of Engineering	Yasuhiro Shimizu
Dean, Graduate School of Fisheries and Environmental Science	Atsushi Hagiwara
Dean, Graduate School of Science and Technology	Yasuhiro Shimizu
Dean, Graduate School of Biomedical Sciences	Isao Shimokawa
Director, Administration Department	Yoshinori Yokoyama
Director, General Affairs Division	Shigeru Chigita
Director, Student Affairs Division	Mika Moriyama
Director, Academic Promotion Division	Hisayuki Fukahori
Director, Dental Sciences Administration Office	Toshinobu Ikeda
Director, Pharmaceutical Sciences Administration Office	Tadaichi Maeda
Director, Medicinal Plant Garden	Naotaka Kuroda
Dean, Graduate School of International Health Development	Kazuhiko Moji
School of Tropical Medicine and Global Health	Kiyoshi Kita
University Research Institutes	
Dean, Institute of Tropical Medicine	Kouichi Morita
Director, Center for Infectious Disease Research in Asia and Africa	Kouichi Morita
Director, Tropical Medicine Museum	Noboru Minakawa
Dean, Atomic Bomb Disease Institute	Yuji Nagayama
University Hospital	
Director, University Hospital	Hideaki Masuzaki
Director, Administration Department	Tokimasa Torii
Director, Management and Planning Division	Masami Kondo

Director, General Affairs Division	Hiroshi Hamamura
Director, Procurement Management Division	Toshihiko Hamamoto
Director, Medical Affairs Division	Takahiro Yoshii
Director, Patient Services Office	Yoshimasa Yoshida
Director, Pharmaceutical Department	Hitoshi Sasaki
Director, Nursing Department	Kinuko Hagiwara

University Library

Director, University Library	Hideaki Nakata
Director, Medical Library	Katsuyuki Yui
Director, Economics Library	Atsuyuki Fukaura

Center for Health and Community Medicine

Director, Center for Health and Community Medicine	Susumu Shirabe
--	----------------

Faculty-affiliated Institutes for Education and Research

Director, Center for Frontier Life Sciences	Toshifumi Komori
Director, Center for Information and Communication Technology	Yoshihiro Murata
Director, Center for Educational Innovation	Nobuo Matsusaka
Director, Advanced Computing Center	Takahiko Yamashita
Director, Center for Language Studies	Toshiaki Inada
Director, Research Center for Nuclear Weapons Abolition	Tatsujiro Suzuki

Student Affairs Information Promotion Office

Director	Nobuo Matsusaka
----------	-----------------

Yattemyu Desk-Office of Volunteer Opportunities

Director	Ibuki Horiuchi
----------	----------------

Center for Diversity and Inclusion

Director	Masako Ito
----------	------------

Medical Innovation Center

Director	Toshifumi Komori
----------	------------------

Center for Regional Educational Partnerships

Director	Yoshimasa Hoshino
----------	-------------------

Student Accessibility Office

Director	Nobuo Matsusaka
----------	-----------------

Research and Support Center for the Future of Fukushima

Director	Shunichi Yamashita
----------	--------------------

Institutional Research office

Director	Shigeru Kohno
----------	---------------

Shimabara Joint Training Center for National Universities in Kyushu Area

Director	Ibuki Horiuchi
----------	----------------

Number of Board Members and Faculty/Administrative Staff

2016. 5. 1

Board Members, etc. Faculties, etc.	Board Members			Faculty Staff								Sub Total	Admin-istrative Staff	Total
	President	Trustees	Auditors	Vice Presidents	Special Aide to the President	Professors	Associate Professors	Senior Assistant Professors	Assistant Professors	Research Associates	School Teachers			
Center for International Collaborative Research						2	1		3			6	18	24
Center for Industry, University and Government Cooperation						1	3		3			7	5	12
Center for Public Relations Strategy						1	1					2	4	6
Center for Research Promotion Strategy													3	3
Headquarter for Nuclear Disaster Response and Preparedness													2	2
Liaison Center for International Education						2	5					7	14	21
Organisation for Marine Science and Technology						4	1		1			6		6
Center of Community Development									1			1	5	6
Audit Office													3	3
Administration Bureau	1	6	(1)	1	(14)	(2)						(1) [16] 8	218	(1) [16] 226
Bunkyo District Affairs													67	67
School of Global Humanities and Social Sciences						9	18		1			28	9	37
Faculty of Education						29	35		3			67	1	68
Kindergarten											8	8		8
Elementary School											31	31	1	32
Lower Secondary School											25	25		25
School for Children with Special Education Needs											29	29		29
Faculty of Economics						26	27	2	1			56	17	73
Faculty of Fisheries						1			1			2		2
Training Ship "Kakuyo-Maru"							2			1		3	12	15
Training Ship "Nagasaki-Maru"						1	1		2	1		5	17	22
Graduate School of Education						6	7					13		13
Graduate School of Engineering						42	44		26	1		113	41	154
Graduate School of Fisheries and Environmental Sciences						46	34		9			89		89
Faculty of Medicine						1	1	1	3			6	2	8
Graduate School of Biomedical Sciences						97	82	25	151			355	78	433
Medicinal Plant Garden							1					1		1
School of Tropical Medicine and Global Health						6	1		2			9	1	10
Institute of Tropical Medicine						12	7	3	36			58	4	62
Center for Infectious Disease Research in Asia and Africa						1			5			6	1	7
Tropical Medicine Museum						1						1	2	3
Atomic Bomb Disease Institute						9	4	2	16			31	2	33
Center for promotion of Collaborative Research on Radiation and Environment Health Effects						1	1	1	3			6	1	7
University Hospital						9	17	59	178			263	1,358	1,621
Center for Health and Community Medicine						1	3		2			6	11	17
Center for Frontier Life Sciences						1	1		2			4	5	9
Center for Information and Communication Technology						1	4					5		5
Center for Educational Innovation						3	1		4			8		8
Advanced Computing Center							1					1		1
Center for Language Studies						7	1	1	7			16		16
Research Center for Nuclear Weapons Abolition						2	1					3		3
Center for Diversity and Inclusion						1			1			2	3	5
Center for Regional Educational Partnerships						2	1					3		3
Medical Innovation Center						1						1		1
Student Accessibility Office									1			1	1	2
Institutional Research office													1	1
Total	1	6	(1)	1	(14)	(2)	326	306	94	462	3	93	(1) [16] 1,292	(1) [16] 3,199

· Auditor (1) is a part-time staff member, and is excluded from the total. Vice Presidents [14] and Special Aide to the President [2] double as Faculty members or Trustees, and indicates the number of them included in count.
 · The Faculty Staff of the Faculty of Environmental Science or the Faculty of Fisheries belongs to the Graduate school of Fisheries and Environmental Sciences. The Faculty Staff of the School of Medicine, the School of Dentistry or the School of Pharmaceutical Sciences belongs to the Graduate School of Biomedical Sciences.



Education and Research

Faculties and Schools

Faculty	Divisions	Departments
School of Global Humanities and Social Sciences 1 Department 4 Programs	Department of Global Humanities and Social Sciences	Global Society Program Social Dynamics Program Culture and Communication Program Dutch Studies Program
Faculty of Education 1 Division 6 Departments	Teacher Education Division	Department of Intercultural Studies Department of Art Expression Department of Education and Psychology Department of Natural Science Department of Life and Health Department of Elementary Education
Faculty of Economics 1 Department 6 Divisions	General Economics	Economics and Econometrics Regional Economics and Policy Economic Cooperation & International Communication Financial Systems Corporate Behavior & Decision Making Business Management & Accounting
School of Medicine 2 Departments 7 Divisions	School of Medical Sciences	Structure-Function-Metabolism Therapeutic Medicine
	School of Health Sciences	Pathophysiologic Analysis Preventive Medicine Nursing Occupational Therapy Physical Therapy
School of Dentistry 1 Department 3 Divisions	Dentistry	Oral and Maxillofacial Life Sciences Oral and Maxillofacial Environmental Sciences Oral and Maxillofacial Regenerative Medical Sciences
School of Pharmaceutical Sciences 2 Departments 4 Divisions	Pharmacy	Basic Pharmacy Medical Pharmacy
	Pharmaceutical Sciences	Basic Pharmaceutical Sciences Applied Pharmaceutical Sciences
School of Engineering 1 Department 6 Programs	Engineering	Mechanical Engineering Program Electrical and Electronic Engineering Program Computer and Information Science Program Structural Engineering Program Civil and Environmental Engineering Program Chemistry and Materials Engineering Program
Faculty of Environmental Science 1 Department 2 Divisions	Environmental Science	Human and Social Environment Environmental Conservation and Planning
Faculty of Fisheries 1 Department 4 Divisions	Fisheries	Systematic Fisheries Science Marine Biology and Dynamics Marine Life Science and Biochemistry Marine Material Science

Graduate Schools

Graduate School	Course	Departments
Graduate School of Education	Professional Degree Program	Department of Teacher Training and Practice
Graduate School of Economics	Master's Course	Policy Studies in Economics and Management
	Doctoral Course	Managerial Decision Making
Graduate School of Engineering	Master's Degree	Department of Advanced Engineering
	Doctoral Degree (3 Year Program)	Department of Science and Technology
Graduate School of Fisheries and Environmental Sciences	Doctoral Degree (5 Year Program)	Department of Advanced Technology and Science for Sustainable Development
	Master's Program	Department of Fisheries Science Department of Environmental Science
	Doctoral Program	Department of Environment and Fisheries Resources
Graduate School of Science and Technology	Doctoral Program (5-Year Doctoral Program)	Department of Marine Science
	Doctoral Course	Systems Science Marine Science and Technology Environmental Science
Graduate School of Biomedical Sciences	Master's Course	Health Sciences Disaster and Radiation Medical Sciences
	Doctoral Course	Medical and Dental Sciences Infection Research Life Sciences and Radiation Research Advanced Preventive Medical Sciences
	Master's Course	Pharmaceutical Sciences
	Doctoral Course	Pharmaceutical Sciences
Graduate School of International Health Development	Master's Course	International Health Development
School of Tropical Medicine and Global Health	Master's Course	Department of Global Health

※The Graduate School of Science and Technology, and Graduate school of International Health Development stopped accepting applicants.

Academic Calendar

4 April	1 4	First Day of Academic Year Entrance Ceremony	10 October	
5 May	31	University Foundation Day	11 November	18~19 School Festival
6 June			12 December	12/28~1/3 Winter Break
7 July			1 January	
8 August	8/11~9/29	Summer Break	2 February	
9 September	30	First Day of Second Semester	3 March	3/21~4/3 Spring Break 24 Commencement Ceremony 31 Last Day of Academic Year



University Facilities

University Research Institute: Institute of Tropical Medicine

Research Fields and Departments	Mission Statements
Microbiology and Parasitology Virology, Emerging Infectious Diseases, Bacteriology, Protozoology, Parasitology, Molecular Epidemiology Host and Vector Biology Immunogenetics, Host-Defense Biochemistry, Pathology, Preventive Medicine and AIDS Research Public and Environmental Health Eco-epidemiology, International Health, Global Health Development Policy Sciences, Vector Ecology and Environment Clinical Medicine and Research Clinical Medicine, Pediatric Infectious Diseases, Clinical Product Development	<ol style="list-style-type: none"> 1. Spear-head research in tropical medicine and international health 2. Global contribution through disease control and health promotion in the tropics by applying the fruits of the research 3. Cultivation of researchers and specialists in the above fields

University Research Institute: Atomic Bomb Disease Institute

Research Fields (Departments)	Mission
Radiaton Risk Control Unit Radiation Biology and Protection, Health Risk Control, Radiation Molecular Epidemiology, Global Health, Medicine and Welfare, Radiation Medical Sciences	Radiation health risk analysis and communication.
Cellular Function Analysis Unit Stem Cell Biology, Molecular Medicine	Basic research for radiation effects on cellular levels
Genomic Function Analysis Unit Human Genetics, Genome Repair	Basic research for radiation effects on DNA levels
Atomic Bomb Disease and Hibakusha Medicine Unit Hematology, Tumor and Diagnostic Pathology, Radioisotope Medicine	Diagnosis and clinical management for radiation-induced disorders in atomic bomb survivors.
Center for Promotion of Collaborative Research on Radiation and Environment Health Effects Division of Strategic Collaborative Research Division of Scientific Data Registry Biostatistics Section Tissue and Histopathology Section	Promotion of collaborative study for radiation research

University Library

Holdings

2016. 4 . 1

Libraries	Books			Periodicals		
	Japanese & Chinese	Others	Total	Japanese	Others	Total
Central Library	446,085	138,857	584,942	11,276	3,391	14,667
Medical Library	80,067	72,665	152,732	3,862	3,204	7,066
Economics Library	193,727	83,607	277,334	3,657	1,136	4,793
Total	719,879	295,129	1,015,008	※17,276	※7,327	※24,603

※The identical periodicals are excepted from total amount of 3 libraries.

Use of Library (FY 2015)

Libraries	Visitors, etc.	University Staff	Students	Others	Total
Central Library	Visitors	9,815	442,396	13,731	465,942
	Volumes lent	6,816	44,048	2,081	52,945
Medical Library	Visitors	9,774	119,640	4,328	133,742
	Volumes lent	1,801	10,814	449	13,064
Economics Library	Visitors	4,767	56,412	2,275	63,454
	Volumes lent	1,609	8,591	157	10,357
Total	Visitors	24,356	618,448	20,334	663,138
	Volumes lent	10,226	63,453	2,687	76,366

University Hospital (FY 2015)

Number of Patients by Department

Departments, etc.	Patients	Inpatients		Outpatients	
		Total Number of Patients	Daily Average of Patients	Total Number of Patients	Daily Average of Patients
Endocrinology and Metabolism		3,202	8.7	10,844	44.6
Gastroenterology and Hepatology		21,539	58.8	21,882	90.0
Immunology and Rheumatology		5,860	16.0	12,509	51.5
Neurology		5,301	14.5	6,821	28.1
Respiratory Medicine		17,456	47.7	12,691	52.2
Nephrology		4,823	13.2	8,090	33.3
Cardiovascular Medicine		14,020	38.3	15,306	63.0
Hematology		16,327	44.6	10,056	41.4
Infectious Diseases		0	0.0	175	0.7
General Thoracic Surgery		4,720	12.9	2,810	11.6
Digestive Surgery I		11,214	30.6	4,866	20.0
Digestive Surgery II		16,390	44.8	8,808	36.2
Urology		10,733	29.3	18,447	75.9
Cardiovascular Surgery		9,767	26.7	3,589	14.8
Breast and Endocrine Surgery		3,374	9.2	7,474	30.8
Neurosurgery		11,567	31.6	7,911	32.6
Ophthalmology		11,405	31.2	21,303	87.7
Otolaryngology-Head and Neck Surgery		9,951	27.2	13,898	57.2
Dermatology and Allergology		6,752	18.4	15,335	63.1
Plastic and Reconstructive Surgery		4,984	13.6	5,463	22.5
Orthopedic Surgery		13,063	35.7	13,777	56.7
Pediatrics		14,017	38.3	16,529	68.0

Departments, etc.	Patients	Inpatients		Outpatients	
		Total Number of Patients	Daily Average of Patients	Total Number of Patients	Daily Average of Patients
Pediatric Surgery		3,608	9.9	3,619	14.9
Obstetrics and Gynecology		19,806	54.1	17,775	73.1
Neuropsychiatry		11,976	32.7	18,638	76.7
Radiology		4,386	12.0	7,457	30.7
Anesthesiology		63	0.2	8,999	37.0
General Medicine		1,458	4.0	4,008	16.5
International Hibakusha Medical Center		23	0.1	510	2.1
Department of Emergency Center		13,313	36.4	6,023	24.8
Department of Metabolism / Diabetes and Clinical Nutrition		0	0.0	2,800	11.5
Subtotal		271,098	740.7	308,413	1,269.2

Departments, etc.	Patients	Inpatients		Outpatients	
		Total Number of Patients	Daily Average of Patients	Total Number of Patients	Daily Average of Patients
Department of General Dentistry		0	0.0	64,192	264.2
Department of Oral and Maxillofacial Surgery		7,802	21.3	16,444	67.7
Department of Radiology and Anesthesiology		115	0.3	1,547	6.4
Special Care Dentistry		0	0.0	4,943	20.3
Clinic for Oral Health Care and Dysphagia Rehabilitation		0	0.0	3,580	14.7
Oral Care Center		0	0.0	6,915	28.5
Center for Oral and Maxillofacial Implants		46	0.1	4,203	17.3
Subtotal		7,963	21.8	101,824	419.0
Total		279,061	762.5	410,237	1,688.2

Number of days hospitalized=366 days, Number of days open for practice=243 days

Schools and Kindergarten Affiliated with the Faculty of Education

Affiliated Schools

2016. 5 . 1

Schools	Type of Class	Grade		Number of Classes	Admission Capacity	Enrollment Capacity	Enrollment
Kindergarten		3-year-olds	3-year program	1	20	20	24
		4-year-olds	2-year program	2	40	60	34
			3-year program		20		22
		5-year-olds	2-year program	2	40	60	26
			3-year program		20		22
		Total				5	
Elementary School	Ordinary Class		1	3	30	90	90
			2	3	30	90	90
			3	3	30	90	89
			4	3	30	90	87
			5	3	30	90	87
			6	3	30	90	81
	Combined Class		1	1	16	16	8
			2				8
			3	1	16	16	8
			4				8
			5	1	16	16	7
			6				7
	Total				21		588
Lower Secondary School	Ordinary Class		1	4	35	140	143
			2	4	35	140	143
			3	4	35	140	141
	Total				12		420
School for Children with Special Education Needs	Ordinary Class (Combined class of successive grades)	Elementary School	1	1	6	18	1
			2				2
			3				1
			4				2
			5				1
			6				3
	Ordinary Class	Lower Secondary School	1	1	6	18	6
			2	1	6		6
			3	1	6		3
	Ordinary Class	Secondary School	1	1	8	24	7
			2	1	8		8
			3	1	8		8
Total				9		60	48

Faculty-affiliated Institutes for Education and Research

Faculty of Education

Center for Education Research and Training

Faculty of Fisheries

Training Ship Nagasaki-maru

Training Ship Kakuyo-maru

Institute of Tropical Medicine

Center for Infectious Disease Research in Asia and Africa

Tropical Medicine Museum

Graduate School of Biomedical Sciences

Medicinal Plant Garden

Atomic Bomb Disease Institute

Center for Promotion of Collaborative Research on Radiation and Environment Health Effects

Center for Health and Community Medicine

Staffing as of 2016. 5. 1

Director	Professor	Associate Professor	Assistant Professor	Public Health Nurse	Counsellor	Administrative Staff	Total	University doctors, by specialty				
								Internal Medicine	Dermatology	Obstetrics and Gynecology	Ophthalmology	Dentistry
{1}	{1}	3 {1}	2 {1}	3	6	2	16 {4}	4	1	1	1	1

Notes: Consultation days at Bunkyo campus office: Monday through Friday

Consultation days at Sakamoto campus office: Biweekly Friday.

Numbers in brackets denote shared staff, and are excluded from the total.

University Institutes for Education and Research

Organisation for Marine Science and Technology

Institute for East China Sea Research

Life Science Support Center

Radioisotope Research Center

Biomedical Research Center

Gene Research Center

Center for Information and Communication Technology

Center for Educational Innovation

Advanced Computing Center

Center for Language Studies

Research Center for Nuclear Weapons Abolition

Student Affairs Information Promotion Office

Yattemyu Desk (Office of Volunteer Opportunities)

Center for Diversity and Inclusion

Medical Innovation Center

Center for Regional Educational Partnerships

Student Accessibility Office

Research and Support Center for the Future of Fukushima

Institutional Research Office

Stations of Educational Research Projects

Station	Location	Purpose of Establishment
Nagasaki University Africa Research Station Kisumu Research Site	Nairobi, Republic of Kenya Kisumu, Republic of Kenya	Formulation of Educational and Research Strategies, and Support for International Collaborative Research and Educational Activities in Africa.
Kenya Research Station Mbita Research Site Kwale Research Site Busia Research Site	Nairobi, Republic of Kenya (in the Kenya Medical Research Institute (KEMRI)) Mbita, Republic of Kenya Kwale, Republic of Kenya Busia, Republic of Kenya	Promotion of researches on Tropical Diseases and Emerging and Re-emerging Infectious Diseases.
Vietnam Research Station (VRS) Nha Trang Branch	Hanoi City, Socialist Republic of Vietnam (in National Institute of Hygiene and Epidemiology (NIHE)) Nha Trang City, Khanh Hoa Province, Socialist Republic of Vietnam (in the Khanh Hoa Province Health Department)	
Representative Office for Molecular Epidemiological Studies Around Chernobyl	Minsk City, the Republic of Belarus (in Belarusian Medical Academy of Post-Graduate Education)	To promote programs on Global Strategic Center for Radiation Health Risk Control.
Nagasaki University-Kawauchi Village Reconstruction Promotion Base	Kawauchi Village, Fukushima Prefecture(in Kawauchi Village Office)	To promote projects based on the agreement on comprehensive cooperation between Nagasaki University and Kawauchi Village.
Medicine in Goto Islands and Remote Areas Project Station	Goto City, Nagasaki (in Nagasaki Goto Chuoh Hospital)	Promotion of Projects under the Agreement on Establishment of Endowed Course(Unit of Island and Community Medicine).
Innovative Preventive Medicine Education and Research Station	Goto City, Nagasaki (in Fukue General Public Health and Welfare Center)	Promotion of Cohort Studies in Innovative Prevention of Medical Science and Educational Activities.
Research Center for Comprehensive Community Care Education	Nagasaki City, Nagasaki (in Nagasaki Harbor Medical Center City Hospital)	Promotion of Research and Education for Geriatrics and Comprehensive Community Care System.
Hirado Clinical Education Project Station	Hirado City, Nagasaki (in National Health Insurance Hirado Municipal Hospital)	Promotion of Program for Resident Education and Revitalization of Rural Community Hospitals.
Emergency Medical Education Center	Nagasaki City, Nagasaki (in Saiseikai Nagasaki Hospital and Nagasaki Kinen Hospital)	Promotion for Encouraging and Ensconcing Medical Professionals in Nagasaki.

International Liaison Offices

Station	Location	Purpose of Establishment
Nagasaki University International Liaison Office	Leiden, Kingdom of the Netherlands (in the premises of Japan Museum Sieboldhuis)	Promotion of academic and cultural exchange between Nagasaki University and other institutions of higher education in the Netherlands
Liaison Office of Nagasaki University and Jeju National University	Jeju, Republic of Korea (in the premises of Jeju National University)	Promotion of collaborative research and student exchange with Jeju National University
Liaison Office of Nagasaki University and Shanghai Ocean University	Shanghai, People's Republic of China (in the premises of Shanghai Ocean University)	Promotion of collaborative research and student exchange with Shanghai Ocean University
Liaison Office of Nagasaki University and National Taiwan Ocean University	Keelung, Taiwan (in the premises of National Taiwan Ocean University)	Promotion of collaborative research and student exchange with National Taiwan Ocean University
Liaison Office of Nagasaki University and Can Tho University	Can Tho, Socialist Republic of Viet Nam (in the premises of Can Tho University)	Promotion of collaborative research and student exchange with Can Tho University



Distinctive Education and Research

Distinctive Research

Funds for Integrated Promotion of Social System Reform and Research and Development of the Ministry of Education, Culture, Sports, Science and Technology (MEXT)
Program for the Strategic Promotion of International Cooperation to Accelerate Innovation in Developing Countries

FY	Title
FY 2012~FY 2016	Establishment of an innovative biomedical research platform in Africa for a diagnostic technology development of concurrent multiple infectious diseases, a broad and comprehensive surveillance system and an integrated health strategy of the infectious diseases

Funds for the Development of Human Resources in Science and Technology of the Ministry of Education, Culture, Sports, Science and Technology (MEXT)

FY	Program
FY 2011~FY 2017	Improvement of Research Environment for Young Researchers

Distinctive Education

Program for Leading Graduate Schools

Title	Managing Body	FY
Program for Nurturing Global Leaders in Tropical and Emerging Communicable Diseases	Graduate School of Biomedical Sciences, Institute of Tropical Medicine	FY 2012~FY 2018

Project for promotion of Global Human Resource Development

Title	Managing Body	FY
Type B (Faculty/school-specific)	Faculty of Economics, Graduate School of Economics, Graduate School of International Health Development	FY 2012~FY 2016

Program for Promoting Inter-University Collaborative Education

Title	Managing Body	FY
Development of the Basic Skills Required for Human Resources to Work Towards the Development of a Global Society by Learning and Working with International Students (Nagasaki University <Representative university> Nagasaki International University and eight other universities <Partner university>)	Education Support Division	FY 2012~FY 2016
Formation of strategic base for the intercollegiate collaborative education focused on community-based inter-professional work about cancer therapy and palliative care (Nagasaki University <Representative university> University of Nagasaki and one other University <Partner university>)	School of Pharmaceutical Sciences	FY 2012~FY 2016

Promotion Plan for the Platform of Human Resource Development for Cancer

Title	Managing Body	FY
Kyushu Promotion Plan for the Platform of Human Resource Development for Cancer (Kyushu University <Representative university> Nagasaki University and ten other Universities)	Graduate School of Biomedical Sciences	FY 2012~FY 2016

New Paradigms—Establishing Centers for Fostering Medical Researchers of the Future

Title	Managing Body	FY
(A) Fostering Human Resources for Producing Medical Innovation Medical-Engineering Hybrid Professional Development Program	Graduate School of Biomedical Sciences	FY 2013~FY 2017
(B) Doctors for Communities (DOCS) –Fostering Research-Minded General Physicians Innovative development of human resources for comprehensive community care (Nagasaki University <Representative university> Nagasaki Junshin Catholic University <Partner university>)	School of Medicine	FY 2013~FY 2017

Acceleration Program for University Education Rebuilding

Title	Managing Body	FY
Integrated type (Theme I:Active learning / Theme II: Visualization and assessment of student learning outcomes)	Entire University	FY 2014~FY 2018

Problem-Solving Oriented Training Program for Advanced Medical Personnel

Title	Managing Body	FY
Six National University Consortium in Liver Transplant Professionals Training Program (Kumamoto University <Representative university> Nagasaki University and five other universities <Partner university>)	University Hospital	FY 2014~FY 2018
The COE program to adapt dental education for a healthy society with longevity (Okayama University <Representative university>Nagasaki University and nine other universities <Partner university>)	School of Dentistry	FY 2014~FY 2018
Training Program for Advanced Rehabilitation Professionals	School of Health Sciences	FY 2014~FY 2018

Program of recurrent education for fostering highly-skilled human resources at Graduate schools

Title	Managing Body	FY
Career Development Program for Active Midwives	Graduate School of Biomedical Sciences	FY 2014~FY 2016

Center of Community Plus

Title	Managing Body	FY
Revitalization of Nagasaki by the young challengers studying in Nagasaki (Nagasaki University <Representative university> University of Nagasaki and three other universities <Partner university>)	Entire University	FY 2015~FY 2019



Number of Students, etc.

Number of Students

Faculties and Schools

2016. 5. 1 (the number of person)

Faculties, etc.	Departments · Divisions		Admission Capacity (freshmen only)	Transfer Student Capacity	Enrollment Capacity (all students from freshmen to seniors)	Enrollment						Total
						1 st year	2 nd year	3 rd year	4 th year	5 th year	6 th year	
School of Global Humanities and Social Sciences	Department of Global Humanities and Social Sciences		100	—	300	103	82	87	—	—	—	272
Faculty of Education	Teacher Education Division		240	—	960	240	241	241	260	—	—	982
Faculty of Economics	General Economics	Day Course	265	—	1,150	277	267	279	463	—	—	1,286
		Evening- centered Course	60	—	240	61	61	65	103	—	—	290
			—	15	30	—	—	—	—	—	—	—
	Sub Total		325	15	1,420	338	328	344	566	—	—	1,576
School of Medicine	School of Medical Sciences		118	5	723	125	122	142	136	108	124	757
	School of Health Sciences		106	14	452	113	108	116	113	—	—	450
	Sub Total		224	19	1,175	238	230	258	249	108	124	1,207
School of Dentistry	Dentistry		50	—	300	50	58	47	54	52	57	318
School of Pharmaceutical Science	Pharmacy		40	—	240	40	39	41	40	40	51	251
	Pharmaceutical Sciences		40	—	160	40	42	42	54	—	—	178
	Sub Total		80	—	400	80	81	83	94	40	51	429
School of Engineering	School of Engineering		380	—	1,520	396	385	394	498	—	—	1,673
	Mechanical Systems Engineering		—	—	—	—	—	—	7	—	—	7
	Electrical and Electronic Engineering		—	—	—	—	—	—	5	—	—	5
	Computer and Information Sciences		—	—	—	—	—	—	5	—	—	5
	Structural Engineering		—	—	—	—	—	—	3	—	—	3
	Civil Engineering		—	—	—	—	—	—	4	—	—	4
	Materials Science and Engineering		—	—	—	—	—	—	5	—	—	5
	Applied Chemistry		—	—	—	—	—	—	1	—	—	1
	Subjects Required for All Departments		—	—	—	—	—	—	—	—	—	—
	Sub Total		380	—	1,520	396	385	394	528	—	—	1,703
Faculty of Environmental Science	Environmental Science		130	5	540	137	136	135	173	—	—	581
Faculty of Fisheries	Fisheries		110	—	440	110	112	115	139	—	—	476
Total			1,639	39	7,055	1,692	1,653	1,704	2,063	200	232	7,544

Graduate Schools

2016. 5. 1 (the number of person)

Admission Capacity· Enrollment	Master's Course						Doctoral Course							
	Admission Capacity	Enrollment Capacity	1 st year	2 nd year	3 rd year	Total	Admission Capacity	Enrollment Capacity	1 st year	2 nd year	3 rd year	4 th year	5 th year	Total
Graduate Schools														
Graduate School of Economics	15	30	10	22	—	32	3	9	3	3	6	—	—	12
Graduate School of Engineering	220	440	207	223	—	430	20	65	22	21	23	2	6	74
Graduate School of Fisheries and Environmental Sciences	60	120	56	63	—	119	17	61	13	18	29	3	5	68
Graduate School of Science and Technology	—	—	—	—	—	—	—	—	—	—	11	—	—	11
Graduate School of Biomedical Sciences	66	122	60	58	—	118	105	395	118	107	122	242	—	589
Graduate School of International Health Development	—	—	—	2	—	2	—	—	—	—	—	—	—	—
School of Tropical Medicine and Global Health	27	42	31	—	—	31	—	—	—	—	—	—	—	—
Total	388	754	364	368	—	732	145	530	156	149	191	247	11	754

Admission Capacity· Enrollment	Professional Degree Program					
	Admission Capacity	Enrollment Capacity	1 st year	2 nd year	3 rd year	Total
Graduate School						
Graduate School of Education	38	76	30	31	6	67
Total	38	76	30	31	6	67

Research Students, Special Register Students, etc.

2016. 5. 1 (the number of person)

Faculties, etc.	Students				
	Research Students	Special Register Students	Special Audit Students	Special Research Students	
School of Global Humanities and Social Sciences		1	3	26	
Faculty of Education· Graduate School of Education		5	6	35	3
Faculty of Economics· Graduate School of Economics		6	1	7	1
School of Medicine				5	
School of Dentistry					
School of Pharmaceutical Sciences		1	3	6	
School of Engineering		4	1	4	
Faculty of Environmental Science		1		1	
Faculty of Fisheries				14	
Graduate School of International Health Development					
Graduate School of Engineering		1			3
Graduate School of Biomedical Sciences		6	8		2
Graduate School of Fisheries and Environmental Sciences					6
Center for Educational Innovation			1		
Liaison Center for International Education				34	
Total		25	23	132	15

In addition to students shown in table, 40 others from affiliated universities in Nagasaki Prefecture take Nagasaki University courses for transferable credits.

FY 2016 New Students

Faculties and Schools

2016. 5. 1 (the number of person)

Admission Capacity, etc.		Admission Capacity	Applicants	Entrants
Faculties and Schools				
School of Global Humanities and Social Sciences		100	189 ※ 2	102 ※ 1
Faculty of Education		240	674 ※ 1	240
Faculty of Economics	Day Course	265	836 ※ 9	274 ※ 3
	Evening-centered Course	60	124	61
School of Medicine		224	813 ※ 1	224
School of Dentistry		50	236 ※ 2	50
School of Pharmaceutical Sciences		80	529 ※ 3	80
School of Engineering		380	880 ※38	384 ※12
Faculty of Environmental Science		122 ※ 8	491 ※13	133 ※ 4
Faculty of Fisheries		110	634 ※ 3	110
Total		1,631 ※ 8	5,406 ※72	1,658 ※20

※ Indicates international students, and is excluded from the total.

Geographical Distribution of Entrants' Secondary Schools

2016. 5. 1 (the number of person)

Areas, etc.	Nagasaki	Kyushu (Except Nagasaki)	Chugoku Shikoku	Kinki	Chubu	Kanto	Tohoku Hokkaido	Returnee Students High School Equivalency Examination, etc.	Total
School of Global Humanities and Social Sciences	20	64	5	7	1	1	2	2	102
Faculty of Education	127	91	17	1	1	1	1	1	240
Faculty of Economics	123	186	9	12	1	1	2	1	335
School of Medicine	93	93	19	9	1	8	0	1	224
School of Dentistry	10	22	7	6	3	2	0	0	50
School of Pharmaceutical Sciences	15	37	12	4	2	6	4	0	80
School of Engineering	130	230	9	2	3	5	3	2	384
Faculty of Environmental Science	40	70	10	1	4	5	3	0	133
Faculty of Fisheries	13	22	16	20	17	18	4	0	110
Total	571	815	104	62	33	47	19	7	1,658

Graduate Schools

2016. 5. 1 (the number of person)

Admission Capacity, etc.		Admission Capacity	Applicants	Entrants
Graduate Schools				
Graduate School of Education	Professional Degree Program	38	43	29 ※ 1
	Master's Course	15	8 ※16	6 ※ 4
Graduate School of Economics	Doctoral Course	3	4 ※ 2	3
	Master's Course	220	234 ※ 8	196 ※ 8
Graduate School of Engineering	Doctoral Course	15	7 ※ 4	7 ※ 4
	Doctoral Course (5-Year Program)	5	6 ※ 1	5 ※ 1
Graduate School of Fisheries and Environmental Sciences	Master's Program	60	67 ※ 9	46 ※ 6
	Doctoral Program	12	2 ※ 7	4 ※ 4
	Doctoral Program (5-Year Doctoral Program)	5	1 ※ 2	1
Graduate School of Biomedical Sciences	Master's Course	30	45 ※ 4	26 ※ 4
	Doctoral Course	95	97 ※ 5	89 ※ 4
	Master's Course	36	37	29
	Doctoral Course	10	9	9
School of Tropical Medicine and Global Health	Master's Course	27	52 ※ 9	23 ※ 8
Total		571	612 ※67	473 ※44

Note) Autumn admission (for October 2015)

※ Indicates international students, and is excluded from the total.

FY 2015 Graduates and Their Paths after Graduation

Undergraduate Students (the number of person)

Faculties and Schools		2015	Total
Faculty of Education		241	17,623
Faculty of Economics	Day Course	375	16,359
	Evening-centered Course	51	711
School of Medicine		217	7,514
School of Dentistry		38	1,844
School of Pharmaceutical Sciences		73	4,428
School of Engineering		359	15,118
Faculty of Environmental Science		148	2,169
Faculty of Fisheries		112	5,877
Total		1,614	71,643

Graduate Students (the number of person)

Graduate Schools		2015	Total
Graduate School of Education		27	725
Graduate School of Economics		17	261
Graduate School of Engineering		231	860
Graduate School of Fisheries and Environmental Sciences		54	222
Graduate School of Science and Technology		1	2,878
Graduate School of Biomedical Sciences		154	1,761
Graduate School of International Health Development		10	71
Graduate School of Medical Sciences			1,294
Graduate School of Dentistry			149
Graduate School of Pharmaceutical Sciences			924
Graduate School of Engineering			1,758
Graduate School of Environmental Studies			46
Graduate School of Fisheries			616
Graduate School of Marine Science and Engineering			245
Total		494	11,810

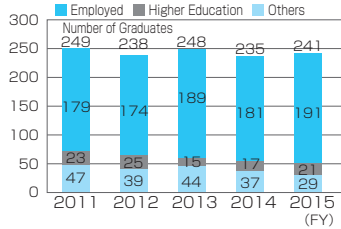
Paths after Graduation

2016. 5. 1 (the number of person)

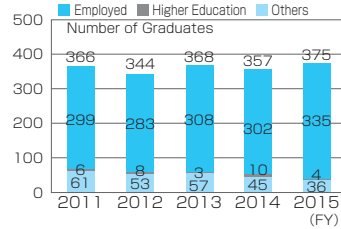
Faculties, etc. Line of Business		Education	Economics	School of Health Sciences School of Medicine	Pharmaceutical Sciences	Engineering	Environmental Studies	Fisheries	Total
		Number of Graduates	241	375	114	73	359	148	112
Employed	Job seekers	214	341	99	30	136	117	59	996
	Employed	191	335	99	30	136	110	50	951
	Employment Rate	89.3	98.2	100.0	100.0	100.0	94.0	84.7	95.5
	Agriculture, forestry, and fishing		2					1	3
	Construction	1	11			21	8	1	42
	Manufacturing	2	37		3	43	11	8	104
	Electricity, Gas, Heat Supply, and Water		1			1	2		4
	Information and Communications, Transportation, and Postal Services	6	39			24	10	5	84
	Wholesale-Retail Business	5	37		6	8	13	13	82
	Banking-Insurance	9	78				14	4	105
	Real Estate and Leasing		12			1		2	15
	Academic Research and Expert and Technical Services	2	10			6	11	4	33
	Hotel and Restaurant Businesses		6					3	9
	Life-Related Services and Entertainment	2	7			1	4	1	15
	Education and Study Support Services	119	5			2		2	128
	Medicine and Welfare	23	5	94	18		6	1	147
	Compound Services						2		2
	Other Services	1	9	1		6	7		24
	Public Services	21	76	4	3	23	22	5	154
	Higher Education	21	4	14	37	213	24	48	361
Others	29	36	1	6	10	14	14	110	

Change in After-graduation Paths for the Past Five Years

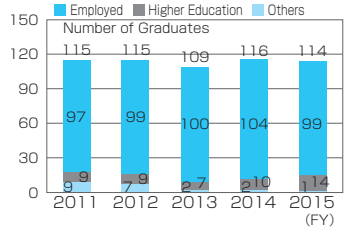
Faculty of Education



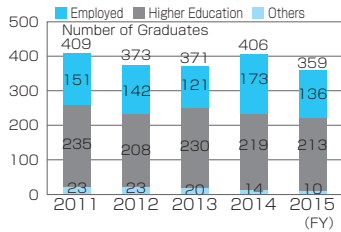
Faculty of Economics



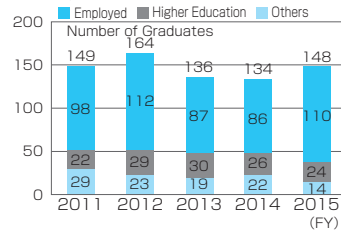
School of Health Sciences, School of Medicine



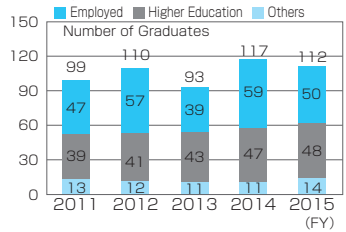
School of Engineering



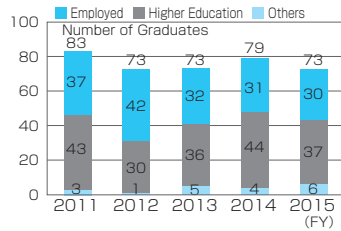
Faculty of Environmental Studies



Faculty of Fisheries



School of Pharmaceutical Sciences



Number of Degrees Conferred

2016. 3. 31 (the number of person)

Doctorate	Completion of both coursework and dissertation		Completion of dissertation only		Number of Degrees Conferred under the Former System
	2015	Total	2015	Total	
Philosophy	3	197	1	27	
Business Administration	4	21			
Medical Science	72	1,915	5	1,831	1,347
Dental Science	12	271	1	98	
Pharmaceutical Science	6	172		37	
Clinical Pharmacy		13			
Engineering	12	313		51	
Fisheries Science	3	74		17	
Environmental Science		27	1	4	
Total	112	3,003	8	2,065	1,347

(the number of person)

Master's	2015	Total
Philosophy	1	3
Science	3	55
Education	3	584
Economics	2	127
Business Administration	11	113
Tropical Medicine	10	104
Nursing	11	67
Physical Therapy	3	59
Occupational Therapy	4	30
Pharmaceutical Science	36	1,282
Clinical Pharmacy		209
Engineering	220	4,587
Fisheries Science	19	1,065
Environmental Studies		228
Environmental Science	25	86
Public Health	10	71
Total	358	8,670

Master's	2015	Total
Master of Education (Professional)	24	141



International Exchange

FY 2016 International Students

Details by Faculty

2016. 5. 1 (number of students)

Students Faculties, etc	Undergraduates	Graduates	Research Students, etc	Total	Students Faculties, etc	Undergraduates	Graduates	Research Students, etc	Total
	School of Global Humanities and Social Sciences	1		30 (3)		31 (3)	Faculty of Fisheries	2	
Faculty of Education	1		35 (2)	36 (2)	Graduate School of Education		3	8 (3)	11 (3)
Faculty of Economics	30 (1)		13 (1)	43 (2)	Graduate School of Economics		17 (1)	2	19 (1)
School of Medicine			5	5	Graduate School of Engineering		53 (3)	4	57 (3)
School of Dentistry			0	0	Graduate School of Fisheries and Environmental Sciences		47 (7)	6	53 (7)
School of Pharmaceutical Sciences			7	7	Graduate School of Biomedical Sciences		73(24)	2	75(24)
School of Engineering	33		7	40	School of Tropical Medicine and Global Health		8		8
Faculty of Environmental Studies	21		1	22	Liaison Center for International Education			37 (4)	37 (4)
Total					Total				
					88 (1) 201(35) 171(13) 460(49)				

Number in () indicates government-sponsored international students, and is included in the total.

Details by Country, etc.

(number of students)

Students Countries,etc	Undergraduates	Graduates	Research Students, etc	Total	Students Countries,etc	Undergraduates	Graduates	Research Students, etc	Total
	Islamic Republic of Afghanistan		1			1	Republic of Kenya		9 (3)
United States of America			2	2	Republic of Korea	19	6 (1)	27	52 (1)
Commonwealth of Australia			3	3	Malaysia	1		1 (1)	2 (1)
People's Republic of Bangladesh		11 (3)	1	12 (3)	Republic of Mali		1		1
Republic of Belarus		1 (1)		1 (1)	Mongolia		2	3	5
Belize		1 (1)		1 (1)	Republic of the Union of Myanmar		15 (3)	1 (1)	16 (4)
Federal Republic of Brazil			1 (1)	1 (1)	Federal Democratic Republic of Nepal		1		1
Brunei Darussalam			2	2	Kingdom of the Netherlands		1	16 (1)	17 (1)
Burkina Faso		2		2	Federal Republic of Nigeria		3	1 (1)	4 (1)
Kingdom of Cambodia		1	1 (1)	2 (1)	Kingdom of Norway			1	1
People's Republic of China	66	91 (4)	82	239 (4)	Republic of the Philippines		4 (4)	1 (1)	5 (5)
Kingdom of Denmark			1 (1)	1 (1)	Spain			1	1
Arab Republic of Egypt		4 (2)		4 (2)	The Republic of the Sudan		3		3
Federal Democratic Republic of Ethiopia		1		1	Taiwan	1	4	14	19
Federal Republic of Germany			2 (1)	2 (1)	United Republic of Tanzania		2 (1)		2 (1)
Republic of Ghana		3 (1)		3 (1)	Kingdom of Thailand	1 (1)	7	1	9 (1)
Republic of Guatemala		1 (1)		1 (1)	Republic of Trinidad and Tobago		1 (1)		1 (1)
Republic of Guinea			1 (1)	1 (1)	Republic of Turkey		1		1
Republic of Honduras		1 (1)		1 (1)	Republic of Uganda		1 (1)		1 (1)
Republic of India		1	1 (1)	2 (1)	Ukraine			1 (1)	1 (1)
Republic of Indonesia		2 (1)	1	3 (1)	United Kingdom			1	1
Islamic Republic of Iran		1 (1)		1 (1)	Republic of Uzbekistan			1 (1)	1 (1)
Republic of Italy			3	3	Socialist Republic of Viet Nam		15 (5)		15 (5)
Republic of Kazakhstan		3		3	Total	88 (1)	201(35)	171(13)	460(49)

Number in () indicates government-sponsored international students, and is included in the total. Countries, etc. are listed in alphabetical order.

Agreements on Academic Exchange with Overseas Institutions

2016. 5. 1

	Countries, etc	Partner Institution	Coordinating Unit※	Date Signed
1	People's Republic of China	Fujian Center for Disease Control and Prevention	Graduate School of Biomedical Sciences	August 23, 1989
2		Fudan University	Graduate School of Biomedical Sciences	October 4, 1989
3		Fuzhou University	Graduate School of Engineering	March 4, 1992
4		Ocean University of China	Graduate School of Fisheries and Environmental Sciences	January 20, 1997
5		China Pharmaceutical University	Graduate School of Biomedical Sciences	October 30, 1998
6		Fujian Medical University	Graduate School of Biomedical Sciences	August 6, 2001
7		Tongji University	Graduate School of Engineering	November 12, 2001
8		Dalian Ocean University	Graduate School of Fisheries and Environmental Sciences	January 17, 2003
9		The Fourth Military Medical University	Graduate School of Biomedical Sciences	March 26, 2003
10		Hong Kong Baptist University	School of Pharmaceutical Sciences	July 9, 2004
11		Beijing Normal University	Faculty of Education	December 27, 2004
12		Beijing Institute of Education	Faculty of Education	December 28, 2004
13		Xinjiang Medical University	Graduate School of Biomedical Sciences	September 26, 2005
14		Shanghai University of Finance and Economics	Faculty of Economics	December 27, 2013
15		Central South University	Graduate School of Biomedical Sciences	April 18, 2006
16		Northeast Normal University	Faculty of Education	March 22, 2007
17		Shanghai Ocean University	Graduate School of Fisheries and Environmental Sciences	May 18, 2007
18		Shanghai Normal University	Faculty of Education	June 27, 2007
19		East China Normal University	Faculty of Education	July 2, 2007
20		Jimei University	Graduate School of Fisheries and Environmental Sciences	August 9, 2007
21		Tianjin University of Science & Technology	Graduate School of Engineering	December 10, 2007
22		Jilin University	Graduate School of Fisheries and Environmental Sciences	January 8, 2008
23		Jiangsu Institute of Parasitic Diseases	Institute of Tropical Medicine	September 20, 2010
24		China Medical University	Institute of Tropical Medicine	September 21, 2010
25		Shandong University	Graduate School of Engineering	November 1, 2010
26		Shandong University of Science and Technology	Graduate School of Engineering	November 1, 2010
27		Zhejiang Ocean University	Graduate School of Fisheries and Environmental Sciences	July 28, 2011
28		South-Western University of Finance and Economics	Faculty of Economics	March 1, 2012
29		Guangzhou Medical University	Graduate School of Biomedical Sciences	March 11, 2013

※() indicates inter-faculty agreements.

	Countries, etc	Partner Institution	Coordinating Unit※	Date Signed
30	People's Republic of China	Yangzhou University	Graduate School of Fisheries and Environmental Sciences	February 24, 2014
31		The Hong Kong Institute of Education	School of Global Humanities and Social Sciences	November 11, 2015
32		Dalian Medical University	Graduate School of Biomedical Sciences	April 25, 2016
33	Taiwan	National Yang Ming University	Graduate School of Biomedical Sciences	June 21, 2002
34		Tamkang University	Graduate School of Fisheries and Environmental Sciences	November 8, 2004
35		National Kaohsiung Marine University	Graduate School of Fisheries and Environmental Sciences	April 19, 2005
36		National Taiwan Ocean University	Graduate School of Fisheries and Environmental Sciences	August 9, 2005
37		Kaohsiung Medical University	Graduate School of Biomedical Sciences	August 1, 2006
38		National Chengchi University	School of Global Humanities and Social Sciences	August 4, 2009
39		National Taiwan University	School of Global Humanities and Social Sciences	November 5, 2010
40		National Taiwan Normal University	School of Global Humanities and Social Sciences	February 13, 2012
41		Fisheries Research Institute Council of Agriculture	Graduate School of Fisheries and Environmental Sciences	June 8, 2012
42		Taipei Medical University	Graduate School of Biomedical Sciences	December 2, 2013
43		National Cheng Kung University	School of Global Humanities and Social Sciences	June 23, 2015
44	Republic of Korea	Jeju National University	Graduate School of Engineering	January 26, 1988
45		Pukyong National University	Graduate School of Fisheries and Environmental Sciences	January 13, 1988
46		Kangwon National University	Graduate School of Engineering	April 4, 2002
47		Jinju Health College	Graduate School of Biomedical Sciences	September 11, 2002
48		Changwon National University	Faculty of Education	October 24, 2002
49		Chonnam National University	Graduate School of Fisheries and Environmental Sciences	December 20, 2002
50		Inha University	Graduate School of Fisheries and Environmental Sciences	July 4, 2003
51		Hanyang University	Faculty of Education	October 10, 2003
52		Yonsei University	Faculty of Education	November 18, 2003
53		Korea Institute of Ocean Science & Technology	Graduate School of Fisheries and Environmental Sciences	February 11, 2004
54		Kyungpook National University	Faculty of Education	September 30, 2004
55		National Fisheries Research and Development Institute	Faculty of Fisheries	March 7, 2005
56		Ewha Womans University	Liaison Center for International Education	February 22, 2006
57		Sungkyunkwan University	Liaison Center for International Education	March 28, 2006
58		Kyung Hee University	Liaison Center for International Education	August 21, 2006
59		Hallym University	Graduate School of Biomedical Sciences	May 23, 2007
60	Seoul National University	Graduate School of Biomedical Sciences	July 16, 2007	

※ () indicates inter-faculty agreements.

	Countries, etc	Partner Institution	Coordinating Unit※	Date Signed
61	Republic of Korea	Pusan National University	Graduate School of Biomedical Sciences	September 13, 2007
62		Yeungnam University	Graduate School of Engineering	February 28, 2008
63		Silla University	Faculty of Education	June 17, 2008
64		Korea National University of Education	Faculty of Education	October 25, 2010
65		Chonbuk National University	Graduate School of Engineering	November 1, 2010
66		Chung-Ang University	Faculty of Education	March 1, 2012
67		Hanshin University	Research Center for Nuclear Weapons Abolition	June 20, 2013
68		Gyeongsang National University	School of Medicine	November 1, 2013
69		Catholic University of Pusan	Graduate School of Biomedical Sciences	April 1, 2014
70		Dongguk University	School of Global Humanities and Social Sciences	October 7, 2014
71		Ajou University	School of Global Humanities and Social Sciences	December 31, 2014
72		Yonsei University Wonju Campus	School of Global Humanities and Social Sciences	January 15, 2015
73		Konkuk University	School of Global Humanities and Social Sciences	March 10, 2015
74	Mongolia	Mongolian National University of Medical Sciences	Graduate School of Biomedical Sciences	June 25, 2008
75	Kingdom of Thailand	Chiang Mai University	Institute of Tropical Medicine	September 5, 1990
76		Chulalongkorn University	Graduate School of Biomedical Sciences	March 26, 1999
77		Mahidol University	Institute of Tropical Medicine	November 1, 1999
78		Thammasat University	Institute of Tropical Medicine	March 13, 2006
79		Department of Medical Sciences, Ministry of Public Health	Graduate School of Biomedical Sciences	March 25, 2006
80		Faculty of Economics, Kasetsart University	(School of Global Humanities and Social Sciences)	December 24, 2014
81	Republic of Indonesia	Sam Ratulangi University	Graduate School of Fisheries and Environmental Sciences	April 19, 1993
82		Airlangga University	Institute of Tropical Medicine	January 20, 2004
83		University of Brawijaya	Graduate School of Fisheries and Environmental Sciences	September 9, 2008
84		Borneo University Tarakan	Faculty of Fisheries	July 8, 2010
85		University of Indonesia	Graduate School of Fisheries and Environmental Sciences	January 30, 2015
86	Republic of Singapore	National University of Singapore	Graduate School of Biomedical Sciences	June 15, 1987
87	Malaysia	Universiti Sains Malaysia	Graduate School of Fisheries and Environmental Sciences	May 15, 1995
88		Taylor's University	School of Global Humanities and Social Sciences	August 19, 2015
89	Brunei Darussalam	Universiti Brunei Darussalam	School of Global Humanities and Social Sciences	January 28, 2015
90	Republic of the Philippines	University of the Philippines Diliman	School of Global Humanities and Social Sciences	April 10, 2001
91		St. Luke's Medical Center	Institute of Tropical Medicine	February 17, 2004

※ () indicates inter-faculty agreements.

	Countries, etc	Partner Institution	Coordinating Unit※	Date Signed
92	Republic of the Philippines	San Lazaro Hospital	Institute of Tropical Medicine	August 20, 2004
93		University of the East	Graduate School of Biomedical Sciences	January 26, 2005
94		University of the Philippines Visayas	Graduate School of Fisheries and Environmental Sciences	March 17, 2010
95		University of the Philippines Manila	Institute of Tropical Medicine	January 20, 2014
96		Ateneo de Manila University	School of Global Humanities and Social Sciences	July 15, 2015
97	Socialist Republic of Viet Nam	National Institute of Hygiene and Epidemiology	Institute of Tropical Medicine	June 25, 2001
98		Can Tho University	Graduate School of Fisheries and Environmental Sciences	February 23, 2012
99		National Institute of Malariaology, Parasitology and Entomology	Institute of Tropical Medicine	November 11, 2013
100		Bachmai Hospital	School of Tropical Medicine and Global health	March 2, 2016
101	Republic of the Union of Myanmar	Department of Medical Science · Department of Medical Research (Lower Myanmar, Central Myanmar), The Ministry of Health	Graduate School of Biomedical Sciences	February 20, 2007
102		Mandalay Technological University	Graduate School of Engineering	April 1, 2015
103		Yangon Technological University	Graduate School of Engineering	July 20, 2015
104	People's Republic of Bangladesh	Bangladesh Rural Advancement Committee University	School of Tropical Medicine and Global health	May 30, 2008
105		Islamic University	Graduate School of Biomedical Sciences	April 16, 2015
106	Federal Democratic Republic of Nepal	Patan Academy of Health Sciences	Institute of Tropical Medicine	July 1, 2014
107	Australia	Edith Cowan University	School of Global Humanities and Social Sciences	November 19, 2012
108		University of the Sunshine Coast	School of Global Humanities and Social Sciences	March 10, 2014
109		Southern Cross University	School of Global Humanities and Social Sciences	July 20, 2014
110		Victoria University	School of Global Humanities and Social Sciences	August 1, 2014
111		Queensland University of Technology	School of Global Humanities and Social Sciences	August 25, 2014
112		University of Western Sydney	School of Global Humanities and Social Sciences	March 25, 2015
113		Deakin University	Graduate School of Fisheries and Environmental Sciences	April 8, 2015
114	United States of America	University of South Carolina	Graduate School of Fisheries and Environmental Sciences	January 21, 1992
115		Michigan State University	Graduate School of Biomedical Sciences	March 6, 2002
116		University of Hawai'i at Mānoa	Graduate School of Fisheries and Environmental Sciences	June 14, 2007
117		University of Hawai'i Kapi'olani Community College	(Faculty of Environmental Science)	July 1, 2015
118		Minnesota State University, Mankato	Center for Language Studies	November 14, 2011
119		California State University San Bernardino	Faculty of Economics	June 13, 2012
120		The University of Montana	Center for Language Studies	May 2, 2013
121		California State University Monterey Bay	School of Global Humanities and Social Sciences	July 15, 2014
122		Benedictine University	School of Global Humanities and Social Sciences	September 12, 2014

※() indicates inter-faculty agreements.

	Countries, etc	Partner Institution	Coordinating Unit※	Date Signed	
123	United States of America	Northern State University	School of Global Humanities and Social Sciences	September 30, 2014	
124		Western Illinois University	School of Global Humanities and Social Sciences	October 7, 2014	
125		Otterbein University	School of Global Humanities and Social Sciences	October 14, 2014	
126		Arkansas Tech University	School of Global Humanities and Social Sciences	October 17, 2014	
127		University of Northern Colorado	School of Global Humanities and Social Sciences	October 31, 2014	
128		North Dakota State University	School of Global Humanities and Social Sciences	December 10, 2014	
129		State University of New York, College at Geneseo	School of Global Humanities and Social Sciences	December 17, 2014	
130		Dickinson State University	School of Global Humanities and Social Sciences	January 31, 2015	
131		Longwood University	School of Global Humanities and Social Sciences	February 23, 2015	
132		Indiana University of Pennsylvania	School of Global Humanities and Social Sciences	April 13, 2015	
133		Northeastern Illinois University	School of Global Humanities and Social Sciences	June 19, 2015	
134		Presbyterian College	School of Global Humanities and Social Sciences	June 19, 2015	
135		Marquette University	School of Global Humanities and Social Sciences	August 13, 2015	
136		Frostburg State University	School of Global Humanities and Social Sciences	November 10, 2015	
137		Canada	University of Manitoba	School of Global Humanities and Social Sciences	November 10, 2014
138			Memorial University of Newfoundland	School of Global Humanities and Social Sciences	November 10, 2014
139	The University of Winnipeg		School of Global Humanities and Social Sciences	December 18, 2014	
140	University of Calgary		School of Global Humanities and Social Sciences	January 20, 2015	
141	University of the Fraser Valley		School of Global Humanities and Social Sciences	September 10, 2015	
142	University of Lethbridge		School of Global Humanities and Social Sciences	November 2, 2015	
143	Republic of Italy	Politecnico di Torino	Graduate School of Engineering	August 1, 1997	
144		University of Naples Federico II	Graduate School of Engineering	May 4, 1998	
145		University of Bari	Graduate School of Engineering	July 10, 2008	
146		University of Trento	Graduate School of Biomedical Sciences	September 1, 2014	
147		Ca' Foscari University of Venice	Faculty of Economics	December 19, 2014	
148		Second University of Naples	Graduate School of Biomedical Sciences	February 29, 2016	
149	United Kingdom of Great Britain and Northern Ireland	London School of Hygiene & Tropical Medicine	School of Tropical Medicine and Global Health	April 9, 2013	
150		Heriot-Watt University	Graduate School of Engineering	October 1, 2014	
151		The University of Edinburgh	Graduate School of Engineering	October 1, 2014	
152		Oxford Brookes University	School of Global Humanities and Social Sciences	January 20, 2015	
153		University of Northumbria at Newcastle	School of Global Humanities and Social Sciences	February 18, 2015	

※() indicates inter-faculty agreements.

	Countries, etc	Partner Institution	Coordinating Unit※	Date Signed
154	United Kingdom of Great Britain and Northern Ireland	University of Aberdeen	School of Global Humanities and Social Sciences	July 6, 2015
155		Manchester Metropolitan University	School of Global Humanities and Social Sciences	September 10, 2015
156		University of the Highlands and Islands	School of Global Humanities and Social Sciences	October 6, 2015
157		Keele University	School of Global Humanities and Social Sciences	November 4, 2015
158	Federal Republic of Germany	Julius-Maximilians-Universität Würzburg	Graduate School of Biomedical Sciences	September 26, 1996
159		The Johannes Gutenberg University Mainz	Graduate School of Biomedical Sciences	June 21, 2010
160		Leibniz Institute for Prevention Research and Epidemiology-BIPS GmbH	Atomic Bomb Disease Institute	August 7, 2014
161		School of Social Sciences, The University of Mannheim	(School of Global Humanities and Social Sciences)	January 7, 2015
162		Technische Hochschule Nürnberg Georg Simon Ohm	School of Global Humanities and Social Sciences	February 26, 2015
163		Augsburg University of Applied Sciences	School of Global Humanities and Social Sciences	June 19, 2015
164		Hof University of Applied Sciences	School of Global Humanities and Social Sciences	September 10, 2015
165	Republic of Poland	Cracow University of Economics	Faculty of Economics	February 17, 2016
166		Warsaw School of Economics	Faculty of Economics	March 2, 2016
167	Kingdom of the Netherlands	Leiden University	School of Global Humanities and Social Sciences, Graduate School of Biomedical Sciences	September 2, 1998
168		Radboud University Nijmegen	School of Global Humanities and Social Sciences	January 27, 2016
169	Kingdom of Belgium	Institute of Tropical Medicine	School of Tropical Medicine and Global Health	January 29, 2013
170		Faculty of Arts & Philosophy, Faculty of Economics & Business Administration, Faculty of Bioscience Engineering, Ghent University	Faculty of Economics, Graduate School of Fisheries and Environmental Sciences	March 18, 2015
171		University of Mons	School of Global Humanities and Social Sciences	November 26, 2015
172	French Republic	Ecole Nationale Supérieure de Chimie de Mulhouse Université de Haute-Alsace	Graduate School of Biomedical Sciences	September 9, 2005
173		Guimet Museum	(University Library)	July 18, 2012
174		European Business School Paris	Faculty of Economics	July 1, 2013
175		University of Angers	Graduate School of Biomedical Sciences	July 9, 2013
176	University Paris-Est Creteil	School of Global Humanities and Social Sciences	November 24, 2015	
177	Spain	Universidad Pontificia Comillas	Graduate School of Engineering	July 25, 2013
178		University of Malaga	School of Global Humanities and Social Sciences	February 13, 2015
179	Portuguese Republic	The University of Porto	Graduate School of Biomedical Sciences	November 23, 2010
180		University Fernando Pessoa	School of Global Humanities and Social Sciences	February 12, 2015
181	Kingdom of Sweden	Faculty of Engineering, Lund University	(Graduate School of Fisheries and Environmental Sciences)	August 13, 2015
182	Kingdom of Norway	Norwegian University of Science and Technology	Graduate School of Fisheries and Environmental Sciences	January 18, 2006
183	Republic of Bulgaria	Medical University of Plovdiv	Graduate School of Biomedical Sciences	July 29, 2013
184	Republic of Belarus	Belarusian State Medical University	Graduate School of Biomedical Sciences	May 29, 1996

※() indicates inter-faculty agreements.

	Countries, etc	Partner Institution	Coordinating Unit※	Date Signed
185	Republic of Belarus	Gomel State Medical University	Graduate School of Biomedical Sciences	January 31, 2002
186		Belarusian Medical Academy of Post-Graduate Education	Graduate School of Biomedical Sciences	July 11, 2008
187	Republic of Kazakhstan	Semey State Medical University	Graduate School of Biomedical Sciences	March 4, 1998
188		Scientific Research Institute of Radiation Medicine and Ecology	Atomic Bomb Disease Institute	December 18, 2002
189		Kazakh National Medical University Named After S.D. Asfendiyarov	Graduate School of Biomedical Sciences	August 26, 2009
190		Kazakhstan-Russian Medical University	Graduate School of Biomedical Sciences	June 7, 2011
191		Syzganovs' National Scientific Center of Surgery	Graduate School of Biomedical Sciences	August 1, 2012
192	Ukraine	State Institution "V.P. Komisarenko Institute of Endocrinology and Metabolism of National Academy of Medical Sciences of Ukraine"	Atomic Bomb Disease Institute	February 21, 2003
193		National Research Centre for Radiation Medicine, National Academy of Medical Sciences of Ukraine	Atomic Bomb Disease Institute	February 21, 2003
194		Ukrainian Radiation Protection Institute	Atomic Bomb Disease Institute	November 16, 2012
195	Russian Federation	Federal State Institution "Medical Radiological Research Center" of the Ministry of Health and Social Development of the Russian Federation	Graduate School of Biomedical Sciences	July 5, 2002
196		North-Western State Medical University named after I.I. Mechnikov	Graduate School of Biomedical Sciences	June 30, 2008
197	Georgia	Tbilisi State Medical University	Graduate School of Biomedical Sciences	March 27, 2015
198	Republic of Kenya	Kenyatta University	Graduate School of Biomedical Sciences	March 29, 2004
199		Kenya Medical Research Institute	Institute of Tropical Medicine	November 12, 2004
200		University of Nairobi	Graduate School of Biomedical Sciences	April 27, 2010
201		Kenya Marine and Fisheries Research Institute	Graduate School of Fisheries and Environmental Sciences	August 29, 2011
202		Moi University	Graduate School of Engineering	October 10, 2012
203		Maseno University	Center for International Collaborative Research	June 21, 2013
204	Republic of South Africa	National Institute for Communicable Diseases of the National Health Laboratory Service	Institute of Tropical Medicine	July 8, 2010
205	United Republic of Tanzania	Muhimbili University of Health and Allied Sciences	Graduate School of Biomedical Sciences	December 23, 2011
206	United Arab Emirates	United Arab Emirates University	Graduate School of Biomedical Sciences	May 11, 2015
207	Islamic Republic of Iran	Tehran University of Medical Sciences	Graduate School of Biomedical Sciences	September 8, 2015
208	Hashemite Kingdom of Jordan	The University of Jordan	Graduate School of Biomedical Sciences	March 12, 2003
209	Republic of Turkey	Gazi University	Graduate School of Engineering	July 25, 2013
210		Istanbul Gelisim University	Graduate School of Engineering	March 24, 2015

※() indicates inter-faculty agreements.

Faculty Staff Visited Overseas Institutions and International Researchers Visited NU in FY 2015

Countries & Regions		Faculty Members	Overseas Researchers	Countries & Regions		Faculty Members	Overseas Researchers		
Asia	People's Republic of China	102	9	Europe	EU Countries	United Kingdom of Great Britain and Northern Ireland	43	6	
	Taiwan	41	1			French Republic	28	0	
	Republic of Korea	101	4			Federal Republic of Germany	28	1	
	ASEAN Countries	Republic of the Philippines	44			6	Kingdom of the Netherlands	16	0
		Malaysia	11			0	Others	102	5
		Kingdom of Thailand	73			11	Montenegro	1	0
		Republic of Indonesia	16		1	Swiss Confederation	10	0	
		Socialist Republic of Viet Nam	87		6	Others	0	0	
		Republic of Singapore	18		1	Russia & Newly Independent States	Russian Federation	4	1
		Republic of the Union of Myanmar	35		3		Republic of Belarus	2	2
		Others	26		0		Republic of Kazakhstan	7	2
	Others	90	4		Others		4	1	
Americas	United States of America	182	1	Africa	Republic of Kenya	87	4		
	Canada	15	2		Others	63	6		
	Federative Republic of Brazil	5	0	Oceania	Australia	29	2		
	Others	20	1		Others	2	0		
Middle East	Republic of Turkey	4	0	Total		1,303	80		
	Others	7	0						



Social Contribution

Center for Industry, University and Government Cooperation

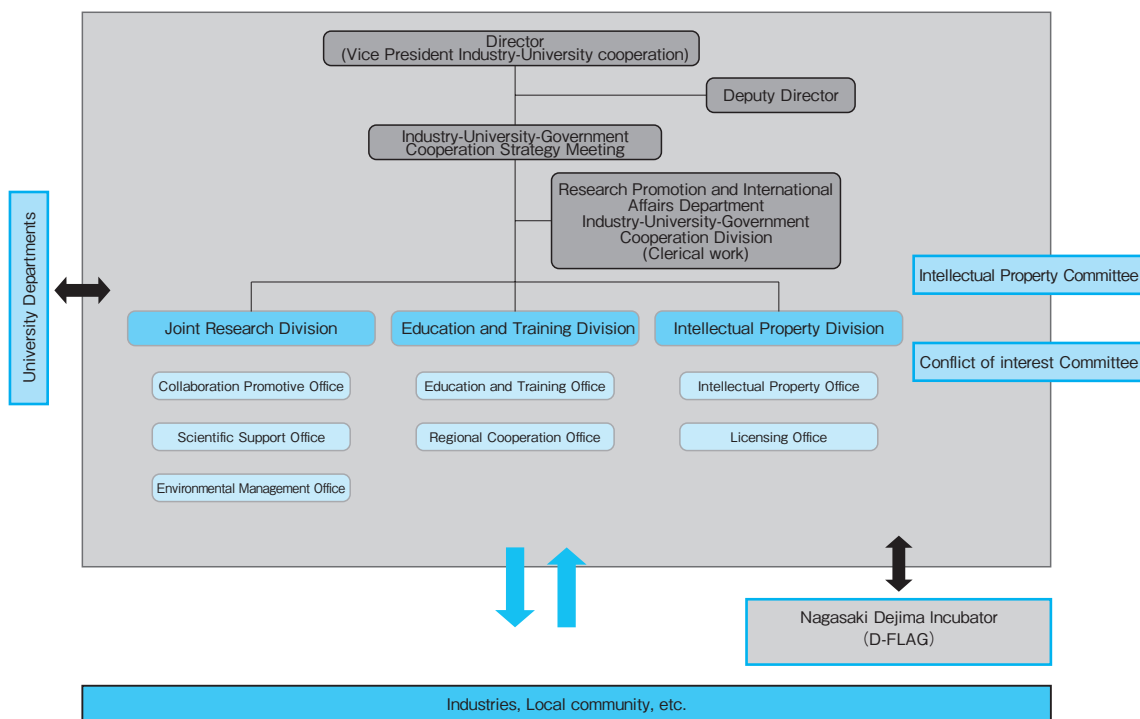
The Center for Industry, University and Government Cooperation, established in June, 2011, consists of the Joint Research Division, the Education and Training Division and the Intellectual Property Division. The aim of this organization is to carry out comprehensive and functional industry-university-government cooperation, evaluation, management and application of research findings and to provide life-long learning opportunities under the strategic driving force of Nagasaki University.

As an intermediary between the university and the community, the Joint Research Division promotes providing research seeds and information, taking technical consultation, undertaking requested analysis and providing technical advice in instrumental analysis. The division also promotes the taking care of precision analytical instruments and the practice of the environmental safety management at Nagasaki University.

The Education and Training Division contributes to society by applying human resources supports for entrepreneurs and the local governments.

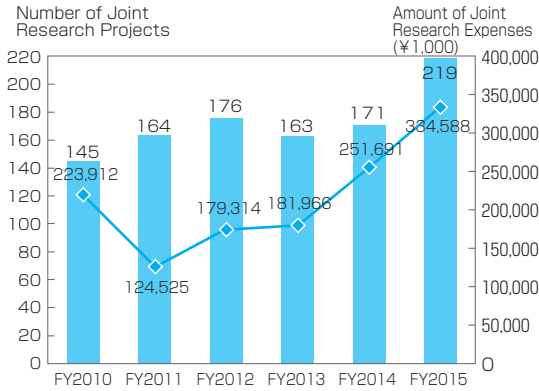
The Intellectual Property Division protects and enhances research findings as intellectual properties of Nagasaki University in order to develop new products and industries providing research findings to industry, and results in contribution to global society.

Center for Industry, University and Government Cooperation Nagasaki University

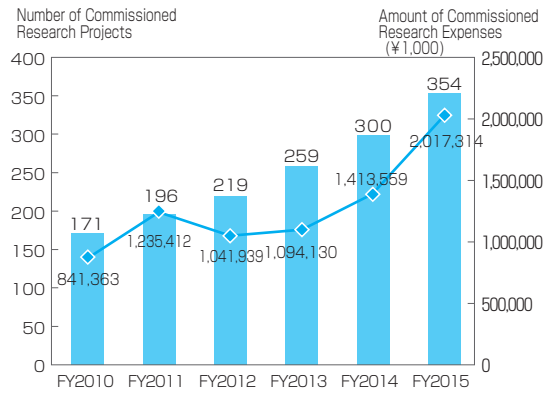


Industry-University Cooperation

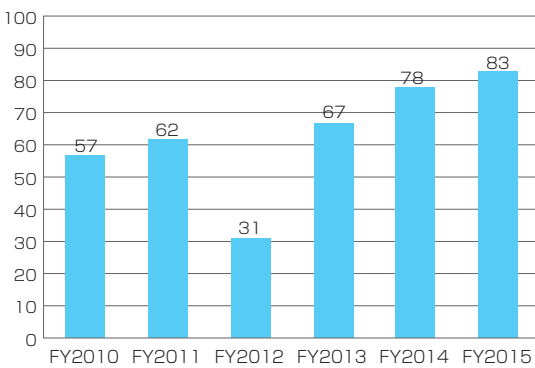
Joint Research



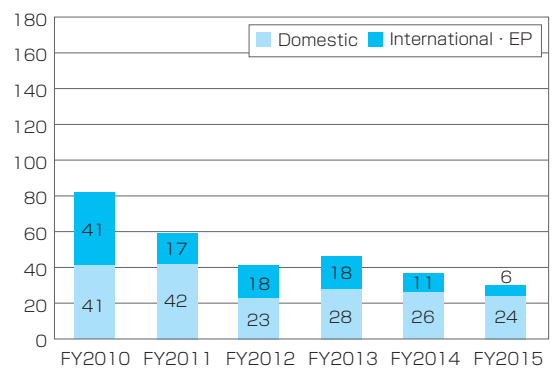
Commissioned Research



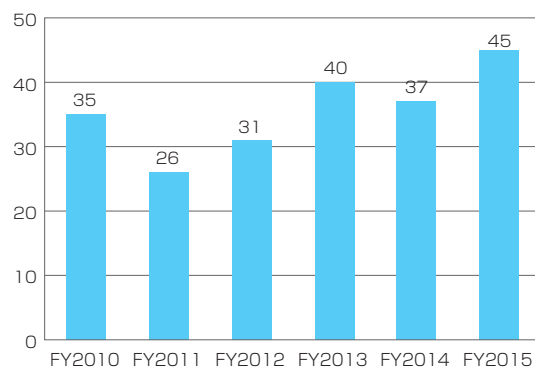
Invention Submission



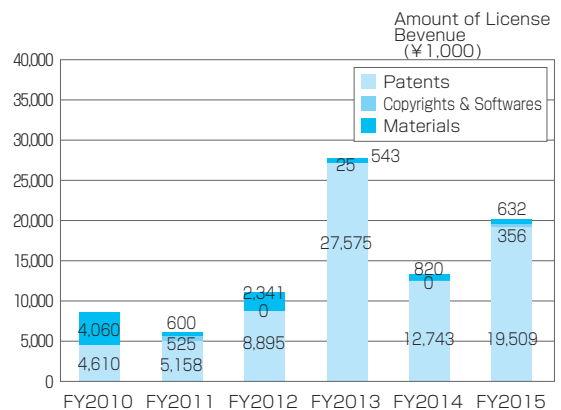
Number of Patent Applications



Number of Patent Licenses



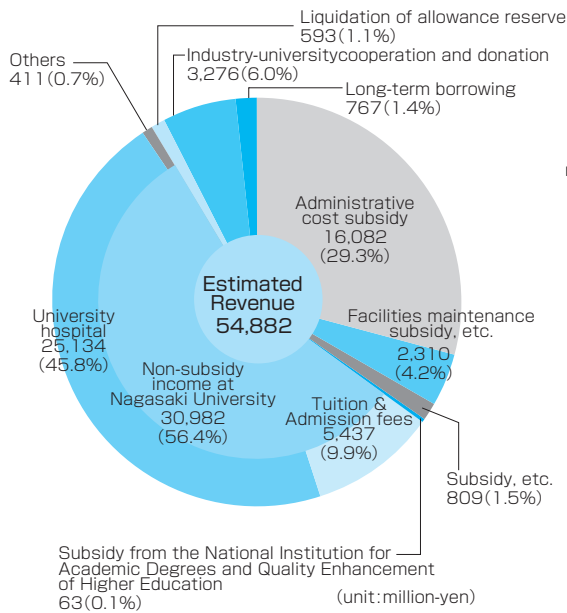
License Revenue (including license and transfer)



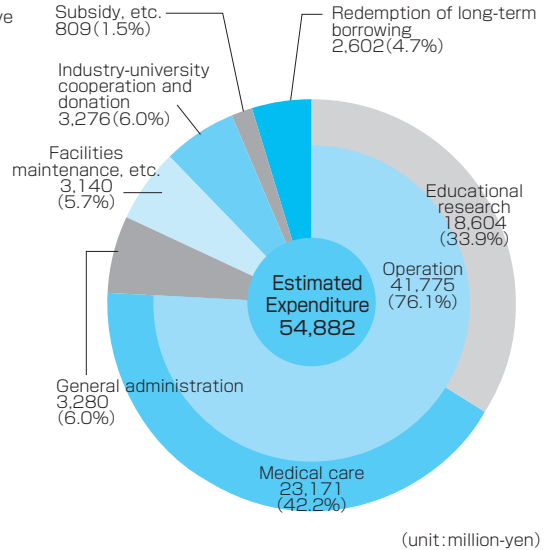


FY 2016 Budget

(Revenue)



(Expenditure)



(unit: million-yen)

Funds from Outside the University

Grants-in-Aid for Scientific Research

2016.5

Type of Research	Number of Grants	Amounts (¥1,000)
Grant-in-Aid for Scientific Research on Innovative Areas	6	55,300
Grant-in-Aid for Scientific Research (S)	1	31,500
Grant-in-Aid for Scientific Research (A)	8	61,900
Grant-in-Aid for Scientific Research (B)	82	297,800
Grant-in-Aid for Scientific Research (C)	316	347,900
Grant-in-Aid for Exploratory Research	71	79,200
Grant-in-Aid for Young Scientists (A)	10	51,300
Grant-in-Aid for Young Scientists (B)	134	154,100
Grant-in-Aid for Research Activity Start-up	8	7,700
Grant-in-Aid for JSPS Fellows	23	24,100
Total	659	1,110,800

Amounts shows direct cost only.

Scholarship

FY 2015

Number	Amounts (¥1,000)
2,596	1,031,926

Commissioned Research

FY 2015

Number	Amounts (¥1,000)
354	2,017,314

Joint Research with Private Sectors

FY 2015

Number	Amounts (¥1,000)
219	334,588



Campus

Bunkyo Campus

Administration Bureau
 School of Global Humanities and Social Sciences
 Faculty of Education
 School of Pharmaceutical Sciences
 School of Engineering
 Faculty of Environmental Science
 Faculty of Fisheries
 Central Library

- | | |
|---|---|
| 1 Clock Tower and Mural | 9 Medicinal Plant Garden |
| 2 Whale Cannon | 10 History Museum of Medicine |
| 3 Statue of Youth | 11 Cenotaph for A-Bomb Victims |
| 4 Global Education and Student Support Center Bunkyo Sky Hall | 12 Monument to the Mitsubishi Weapons Factory |
| 5 NAGASAKI SOGAKUDO | 13 Omayoi Square and Biotope |
| 6 Research Center for Nuclear Weapons Abolition | 14 Chionanthus Retusus |
| 7 Library Gallery | 15 Art and Tech Exhibition Lab SOSOKAN |
| 8 Statue of Honorary Doctor Osamu Shimomura | 16 Statue: In the wind ~Dream of Tomorrow~ |



Sakamoto Campus 1

School of Medicine(School of Medical Sciences)
 Graduate School of International
 Health Development
 School of Tropical Medicine and Global Health
 Institute of Tropical Medicine
 Atomic Bomb Disease Institute



Sakamoto Campus 2

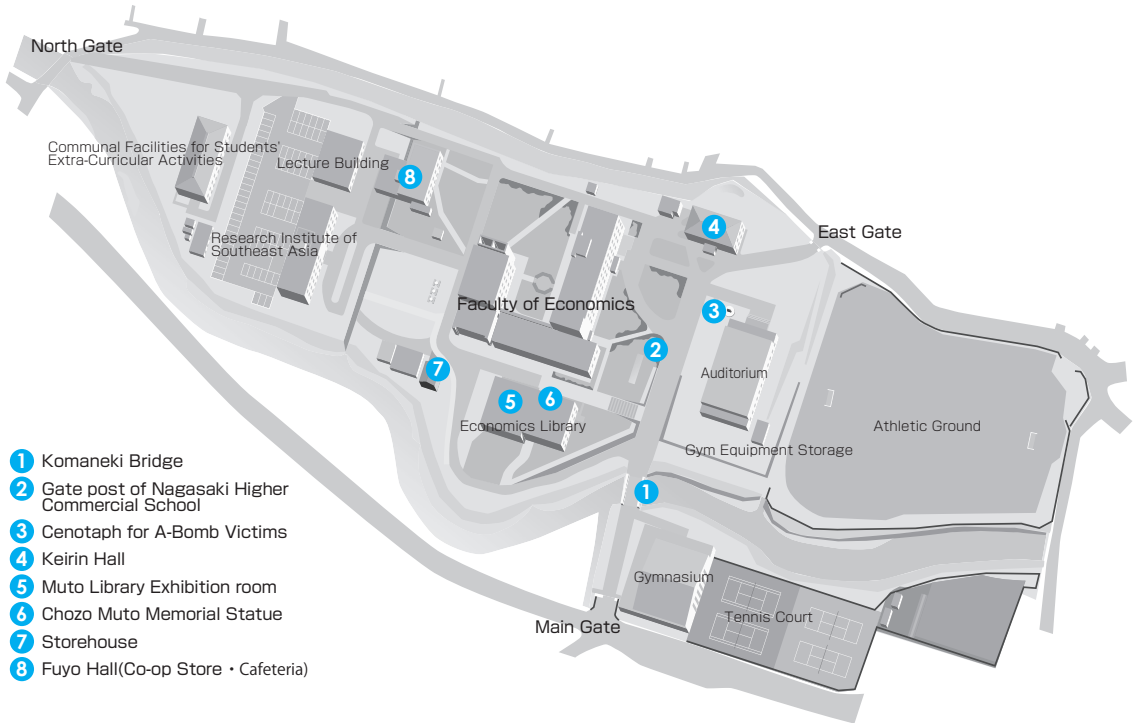
School of Health Sciences
 School of Dentistry
 School of Pharmaceutical Sciences
 University Hospital

- 1 Sky Lounge Pompe
- 2 Statue of Child Holding Up a Water Bowl
- 3 Bombed Camphor Tree
- 4 Gallery
- 5 Corridor
- 6 Monument to Nagasaki Medical College Hospital
- 7 Lawson
- 8 Welfare Facilities (Cafeteria)
- 9 // (Store)



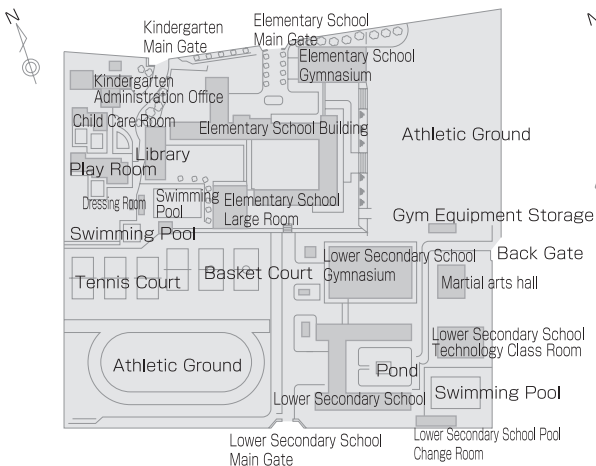
Katafuchi Campus

Faculty of Economics

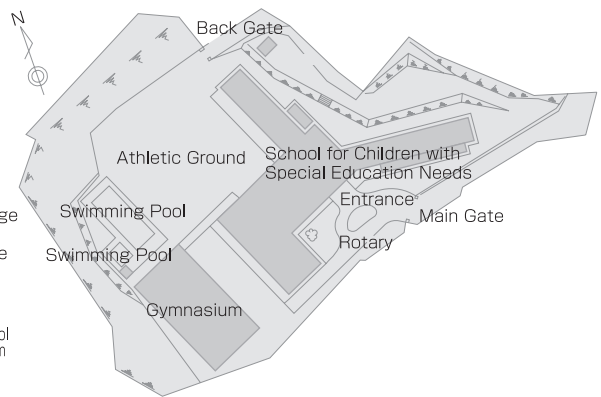


- 1 Komanecki Bridge
- 2 Gate post of Nagasaki Higher Commercial School
- 3 Cenotaph for A-Bomb Victims
- 4 Keirin Hall
- 5 Muto Library Exhibition room
- 6 Chozo Muto Memorial Statue
- 7 Storehouse
- 8 Fuyo Hall(Co-op Store · Cafeteria)

Affiliated Schools (Kindergarten · Elementary School · Lower Secondary School)



School for Children with Special Education Needs



Welfare Facilities

Sports facilities

Campuses	Facilities										Remarks
	Gymnasium	Archery Hall	Judo Hall	Kendo Hall	Martial ArtHall	Tennis Court	Athletic Ground	Volleyball Court	Swimming Pool	Handball Court	
Bunkyo Campus	2	1	1	1		8	1	2	1	1	· Judo, Kendo, and Martial Arts halls are located in the gymnasium. · Volleyball court, handball court, and tennis court on the Bunkyo Campus are used interchangeably.
Katafuchi Campus	1					4	1				
Sakamoto Campus	2	1			1	2	1				
Total	5	2	1	1	1	14	3	2	1	1	

Other major facilities

Name	Departments, etc.	Address	Facilities	Services	Governing Bodies
Seaside Training Center	Student Support Department	Shishigawa Go, Togitsu Cho, Nishisonogi Gun	Accommodation facilities Dining room Boats	Student extra-curricular activities Workshop for university staff Recreation	Nagasaki University
Shimabara Joint Training Center For National Universities in Kyusyu Area	//	1201 Ko Kureishibaru Shimabara City	Accommodation facilities Phisical education facilities	Workshop Recreation	Nagasaki University
Communal Facilities for Students' Extra-Curricular Activities	//	1-14 Bunkyo, Bunkyo campus	Communal room · All purpose room Meeting room	Student extra-curricular activities	Nagasaki University
Student Union	//	//	Getting a job support, Career information section Communal lounge · Meeting room Japanese room · Tea-ceremony room Multipurpose room Cafeteria · Coffee shop School supply store Barber · Beauty shop	Collection of job information, offer and consultation Student extra-curricular activities Sale of food Cafeteria · Coffee shop Sale of books and daily necessities Hair trimming and setting	Nagasaki University Nagasaki University Co-op Suppliers
Student Plaza	//	//	Multipurpose hall 1 Multipurpose hall 2	Student extra-curricular activities	Nagasaki University
Global education and student support center	//	//	Bunkyo Sky Hall	Lecture Student extra-curricular activities	Nagasaki University
Student Community Plaza	//	//	Student lounge · Meeting room	Student extracurricular activities	Nagasaki University
Communal Facilities for Student Extra-Curricular Activities	Faculty of Economics	4-2-1 Katafuchi Faculty of Economics Katafuchi campus	Lounge · Communal room Communal meeting room Music practice room Music appreciation room Workshop room · Photo lab All purpose room	Student extra-curricular activities	Nagasaki University

Name	Departments, etc.	Address	Facilities	Services	Governing Bodies
Sakamoto Campus 1 Communal Facilities for Student Extra- Curricular Activities	School of Medical Sciences, School of Medicine	1-12-4 Sakamoto School of Medicine Sakamoto campus	Communal room Music practice room Outdoor equipment storage	Student extra- curricular activities	Nagasaki University
Sakamoto Campus 2 Communal Facilities for Student Extra- Curricular Activities	School of Health Sciences, School of Medicine	1-7-1 Sakamoto School of Health Sciences School of Medicine Sakamoto campus	Lounge Equipment storage	Student extra- curricular activities	Nagasaki University
Fuyo Hall	Faculty of Economics	4-2-1 Katafuchi Faculty of Economics Katafuchi campus	Lounge · Cafeteria School supply store	Cafeteria Sale of books, food, and daily necessities	Nagasaki University Nagasaki University Co-op
Welfare Facilities	School of Medical Sciences, School of Medicine	1-12-4 Sakamoto School of Medicine Sakamoto campus	Lounge Cafeteria · School supply store	Cafeteria Sale of books, food, and daily necessities	Nagasaki University Nagasaki University Co-op
//	School of Dentistry	1-7-1 Sakamoto School of Dentistry Sakamoto campus	Students study room Seminar room Japanese room Cafeteria	Student extra-curricular activities Cafeteria Sale of books and daily necessities	Nagasaki University Nagasaki University Co-op
//	School of Health Sciences, School of Medicine	1-7-1 Sakamoto University Sakamoto campus School of Health Science, School of Medicine (2shops)	Cafeteria School supply store	Cafeteria Sale of daily necessities	Nagasaki University Co-op

Land · Buildings · Ships

Land and Buildings

Faculties, Centers, etc.	Address	Land (㎡)		Buildings (㎡)	
		University-owned	Leased	University-owned	Leased
Bunkyo Campus	1-14 Bunkyo, Nagasaki City	187,125		41,398 121,174	
Accommodation Facility "Kangetsuso"	1-1-1 Kami Nishiyama, Nagasaki City	903		228 399	
Seaside Training Center	Shishigawa Go, Togitsu Cho, Nishisonogi Gun	1,451	106	371 616	
Kindergarten · Elementary School · Lower Secondary School	4-23 Bunkyo, Nagasaki City	51,185		8,985 16,157	
School for Children with Special Education Needs	42-1 Yanagidani Machi, Nagasaki City	12,529		2,452 3,527	
Katafuchi Campus	4-2-1 Katafuchi, Nagasaki City	51,723		6,840 16,422	
Sakamoto Campus 1	1-12-4 Sakamoto, Nagasaki City	92,176		17,862 55,028	
School of Medicine Charnel House	4-59 Zenza, Nagasaki City		48	13 13	

Faculties, Centers, etc.	Address	Land (㎡)		Buildings (㎡)	
		University-owned	Leased	University-owned	Leased
Sakamoto Campus 2	1-7-1 Sakamoto, Nagasaki City	86,807		<u>31,590</u> 169,488	
Nomozaki Research Laboratory	1321 Nomo Machi, Nagasaki City	15,899		<u>448</u> 448	
Organisation for Marine Science and Technology Institute for East China Sea Research	1551-7 Taira, Nagasaki City	10,900		<u>1,688</u> 2,648	
University Housing		22,753		<u>2,600</u> 11,335	<u>1,106</u> 3,304
Shimabara Joint Training Center for National Universities in Kyushu Area	1201 Ko Kureishibaru, Shimabara City	120,286		<u>1,793</u> 2,329	
International House	12-1 Nishi Machi, Nagasaki City	3,044		<u>635</u> 1,837	<u>499</u> 1,300
University Housing		3,008			<u>910</u> 2,414
International Dormitory HORTENSIA	8-77, 8-78 Shiratori Machi, Nagasaki City		3,142		<u>722</u> 2,166
Sub Total		659,789	3,296	<u>116,903</u> 401,421	<u>3,237</u> 9,184
Total		663,085		<u>120,140</u> 410,605	

Ships

Faculty and Department	Ship's name	Material	Gross tonnage	PS	Complement
Faculty of Fisheries	Nagasaki-Marū	Steel Ship	842.00	2,800	29 instructors & staff plus 40 students
	Kakuyo-Marū	Aluminum Alloy Ship	155.00	1,428×2	18 instructors & staff plus 18 students
Student Support Department	Kinpu	F R P		90	Rescue Boat Capacity : 10

Address/TEL of Faculties, Centers, etc.

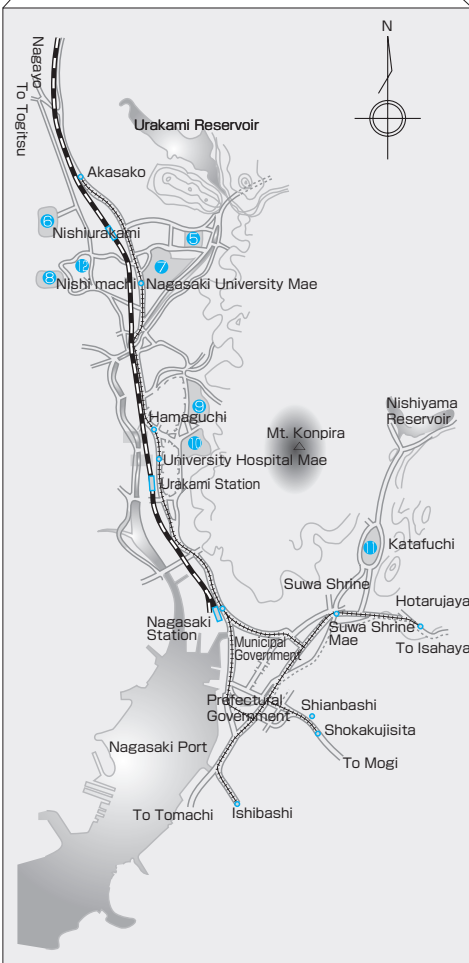
Faculties, etc.	TEL	Address
· Center for International Collaborative Research	(+81)95-819-7008	1-12-4 Sakamoto, Nagasaki City 852-8523
· Center for Industry, University and Government Cooperation		
Joint Research Division	(+81)95-819-2231	1-14 Bunkyo, Nagasaki City 852-8521
Education and Training Division	(+81)95-819-2229	//
	Life-Long Education	
Intellectual Property Division	(+81)95-819-2188	//
· Center for Public Relations Strategy	(+81)95-819-2007	//
· Liaison Center for International Education	(+81)95-819-2120	//
· Organisation for Marine Science and Technology	(+81)95-819-2878	//
· Institute for East China Sea Research	(+81)95-850-7311	1551-7 Taira, Nagasaki City 851-2213
· Center of Community Development	(+81)95-819-3052	1-14 Bunkyo, Nagasaki City 852-8521
· Center for Research Promotion Strategy	(+81)95-819-2208	//
· Audit Office	(+81)95-819-2182	//
· Promotion Office		
Administration Bureau	(+81)95-819-2016	//
	General Planning Division	
	(+81)95-819-2032	
	Personnel Division	
	(+81)95-819-2039	
	Research Planning Division	
	(+81)95-819-2038	
	Industry-University-Government Cooperation Division	
	(+81)95-819-2050	
	Finance Planning Division	
	(+81)95-819-2060	
	Finance Management Division	
	(+81)95-819-2161	
	Procurement Division	
	(+81)95-819-2072	
	Education Support Division	
	(+81)95-819-2103	
	Student Support Division	
	(+81)95-819-2111	
	Admission Division	
	(+81)95-819-2131	
	Facilities Planning Division	
	(+81)95-819-2137	
	Facilities Maintenance Division	
	(+81)95-819-2141	
	Facilities Management Division	

Faculties, etc.	TEL	Address
	(+81)95-819-2022 Information Planning Division	
	(+81)95-819-2193 Academic Information Management Division	
	(+81)95-819-2198 Academic Information Services Division	
· Center for Health and Community Medicine	(+81)95-819-2214	1-14 Bunkyo, Nagasaki City 852-8521
· Life Science Support Center		
Radioisotope Research Center	(+81)95-819-7150	1-12-4 Sakamoto, Nagasaki City 852-8523
Biomedical Research Center	(+81)95-819-7134	//
Gene Research Center	(+81)95-819-7191	//
· Center for Information and Communication Technology	(+81)95-819-2222	1-14 Bunkyo, Nagasaki City 852-8521
· Center for Educational Innovation	(+81)95-819-2077	//
· Advanced Computing Center	(+81)95-819-2705	//
· Center for Language Studies	(+81)95-819-2077	//
· Research Center for Nuclear Weapons Abolition	(+81)95-819-2164	//
· Student Affairs Information	(+81)95-819-2072	//
· Yattermyu Desk-Office of Volunteer Opportunities	(+81)95-819-2870	//
· Center for Diversity and Inclusion	(+81)95-819-2889	//
· Medical Innovation Center	(+81)95-819-2230	//
· Center of Regional Educational Partnerships	(+81)95-819-2184	//
· Student Accessibility Office	(+81)95-819-2006	//
· Research and Support Center for the Future of Fukushima	(+81)95-819-7098	//
· Institutional Research Office	(+81)95-819-2022	//
· International House	(+81)95-845-0201	12-1 Nishi Machi, Nagasaki City 852-8043
· International House, Sakamoto Bunkan	(+81)95-819-7519	1-7-1 Sakamoto, Nagasaki City 852-8102
· International Dormitory HORTENSIA	(+81)95-819-0201	8-77, 8-78 Shiratori Machi, Nagasaki City 852-8042
· Seaside Training Center	(+81)95-882-8301	Shishigawa Go, Togitsu Cho, Nishisonogi Gun 851-2111
· Shimabara Joint Training Center for National Universities in Kyushu Area	(+81)957-64-2201	1201 Ko Kureishibaru, Shimabara City 855-0026
· Tokyo Office	(+81)3-6257-1940	503 Cross Office Uchisaiwaicho, 1-18-6 Nishishinbashi, Minato-ku, Tokyo 105-0003
· School of Global Humanities and Social Sciences	(+81)95-819-2934	1-14 Bunkyo, Nagasaki City 852-8521
· Faculty of Education	(+81)95-819-2263	1-14 Bunkyo, Nagasaki City 852-8521
Kindergarten	(+81)95-819-2288	4-23 Bunkyo, Nagasaki City 852-8131
Elementary School	(+81)95-819-2272	//
Lower Secondary School	(+81)95-819-2278	//
School for Children with Special Education Needs	(+81)95-845-5646	42-1 Yanagidani, Nagasaki City 852-8046
Center for Education Research and Training	(+81)95-819-2291	1-14 Bunkyo, Nagasaki City 852-8521

Faculties, etc.	TEL	Address
· Faculty of Economics	(+81)95-820-6300	4-2-1 Katafuchi, Nagasaki City 850-8506
· School of Medicine		
School of Medical Sciences	(+81)95-819-7004	1-12-4 Sakamoto, Nagasaki City 852-8523
School of Health Sciences	(+81)95-819-7900※	1-7-1 Sakamoto, Nagasaki City 852-8520
· University Hospital	(+81)95-819-7200※	1-7-1 Sakamoto, Nagasaki City 852-8501
· School of Dentistry	(+81)95-819-7600※	1-7-1 Sakamoto, Nagasaki City 852-8588
· School of Pharmaceutical Sciences	(+81)95-819-2413	1-14 Bunkyo, Nagasaki City 852-8521
· School of Engineering	(+81)95-819-2489	//
· Faculty of Environmental Science	(+81)95-819-2713	//
· Faculty of Fisheries	(+81)95-819-2793	//
Training Ship "Nagasaki-Maru"	(+81)90-3022-2043	Taira, Nagasaki City 851-2213
Training Ship "Kakuyo-Maru"	(+81)90-3022-2044	//
· Institute of Tropical Medicine	(+81)95-819-7800※	1-12-4 Sakamoto, Nagasaki City 852-8523
Center for Infectious Disease Research in Asia and Africa	//	//
Tropical Medicine Museum	(+81)95-819-7868	//
· Atomic Bomb Disease Institute	(+81)95-819-7004	//
· Central Library	(+81)95-819-2193	1-14 Bunkyo, Nagasaki City 852-8521
Medical Library	(+81)95-819-7013	1-12-4 Sakamoto, Nagasaki City 852-8523
Economics Library	(+81)95-820-6309	4-2-1 Katafuchi, Nagasaki City 850-8506
· Graduate School of Engineering	(+81)95-819-2489	1-14 Bunkyo, Nagasaki City 852-8521
· Graduate Schools of Fisheries and Environmental Sciences		
(Institute of Fisheries Science)	(+81)95-819-2793	1-14 Bunkyo, Nagasaki City 852-8521
(Institute of Environmental Science)	(+81)95-819-2713	//
· Graduate School of Science and Technology	(+81)95-819-2491	//
· Graduate School of Biomedical Sciences		
(Medical Sciences)	(+81)95-819-7004	1-12-4 Sakamoto, Nagasaki City 852-8523
(Health Sciences)	(+81)95-819-7900※	1-7-1 Sakamoto, Nagasaki City 852-8520
(Dental Sciences)	(+81)95-819-7600※	1-7-1 Sakamoto, Nagasaki City 852-8588
(Pharmaceutical Sciences)	(+81)95-819-2413	1-14 Bunkyo, Nagasaki City 852-8521
Medicinal Plant Garden	//	//
· Graduate School of International Health Development	(+81)95-819-7583	1-12-4 Sakamoto, Nagasaki City 852-8523
· School of Tropical Medicine and Global Health	(+81)95-819-7583	//

※Audio assistance is available after office hours.

Location Map



- ① Seaside Training Center
- ② Institute for East China Sea Research
- ③ Nomozaki Research Laboratory
- ④ Shimabara Joint Training Center for National Universities in Kyushu Area
- ⑤ Kindergarten, Elementary School, Lower Secondary School
- ⑥ School for Children with Special Education Needs
- ⑦ Headquarters for Planning and Evaluation, Center for Industry, University and Government Cooperation, Center for Public Relations Strategy, Center for Research Promotion Strategy, Liaison Center for International Education, Organisation for Marine Science and Technology, Center of Community Development, Audit Office, Administration Bureau, School of Global Humanities and Social Sciences, Faculty of Education, Graduate School of Education, Center for Education Research and Training, School of Pharmaceutical Sciences, School of Engineering, Faculty of Environmental Science, Faculty of Fisheries, Central Library, Graduate School of Engineering, Graduate School of Fisheries and Environmental Sciences, Graduate School of Biomedical Sciences (Pharmaceutical Sciences), Medicinal Plant Garden, Center for Health and Community Medicine, Center for Information and Communication Technology, Center for Educational Innovation, Advanced Computing Center, Center for Language Studies, Research Center for Nuclear Weapons Abolition, Student Affairs Information Promotion Office, Yattemyu Desk, Center for Diversity and Inclusion, Medical Innovation Center, Center for Regional Educational Partnerships, Student Accessibility Office, Research and Support Center for the Future of Fukushima, Institutional Research Office
- ⑧ International House
- ⑨ Center for International Collaborative Research School of Medicine (School of Medical Sciences) Institute of Tropical Medicine Atomic Bomb Disease Institute Graduate School of Biomedical Sciences (Medical Sciences) Graduate School of International Health Development Life Science Support Center Medical Library School of Tropical Medicine and Global Health
- ⑩ University Hospital, School of Dentistry, School of Pharmaceut Sciences, Graduate School of Biomedical Sciences (Health Sciences · Dental Sciences), School of Medicine (School of Health Sciences, Pharmaceutical Sciences), International House, Sakamoto Bunkan, Headquarter for Nuclear Disaster Response and Preparedness
- ⑪ Faculty of Economics, Graduate School of Economics, Economics Library
- ⑫ International Dormitory HORTENSIA

Nagasaki University Logo

Formal Logo



The formal logo was designed in 1949 to raise a sense of common bonds among university members and to provide moral support for them in developing as a university. A Dutch ship representing Nagasaki, the only door for the Western culture during the Period of Isolation, has the initial letters of Nagasaki University “N.U.” on its bow as well as the Chinese character “大學” meaning “university” at its right.

With its reorganization into a National University Corporation, the existing symbol mark was modified on April 1, 2005 to establish the formal university logo.

Informal Logo



The informal logo was designed on April 1, 2005 for use in a variety of more casual occasions.

The yellow line in the center stands for “Students and Faculty”, while the green line on the right is for the “Land Area of Japan and Its Territory” with its rich natural environment. The blue line on the left represents the “Vast Sea with the International Community” surrounding the “Land Area of Japan and Its Territory”.

The points where the lines intersect show “Harmony and Contribution” among the areas, and the yellow circles are meant to express “Creativity”.

Seen as a whole, the yellow line for the “Students and Faculty” and the green line for the “Land Area of Japan and Its Territory” form the inverted Chinese character of “Person”, while the yellow line and the blue line for the “Vast Sea with the International Community” configure “Person” again. All together the lines shape the letter “N” for Nagasaki University.



国立大学法人

長崎大学

NAGASAKI UNIVERSITY

Center for Public Relations Strategy,
Nagasaki University

1-14 Bunkyo, Nagasaki City 852-8521

TEL (+81)95-819-2007

URL <http://www.nagasaki-u.ac.jp/>