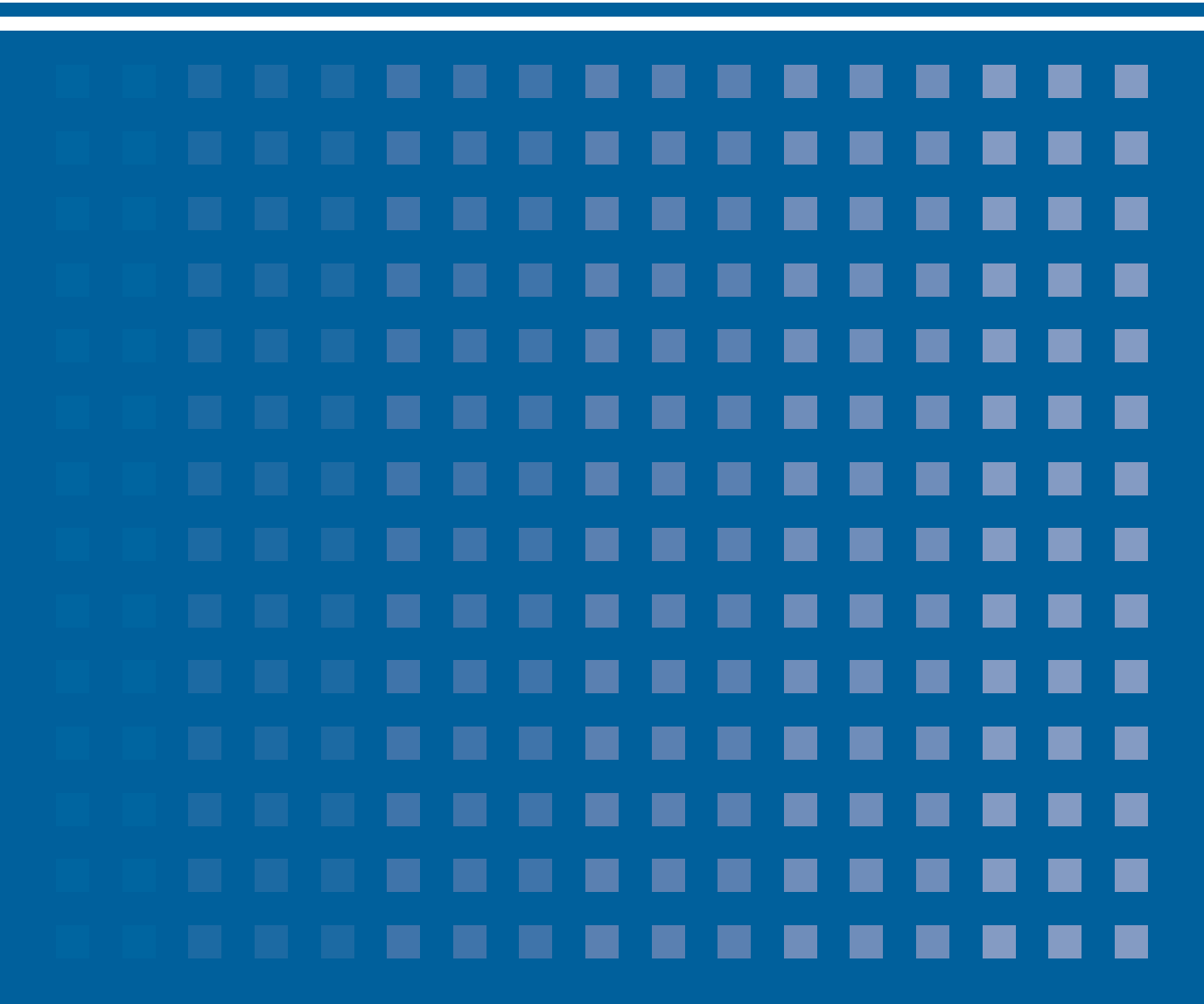


OUTLINE OF NAGASAKI UNIVERSITY 2014



Nagasaki University's Philosophy

Nagasaki University contributes to the improvement of a well-balanced society by transmitting its inheritance of the traditional culture rooted in Nagasaki, cultivating a fertile creative sense in students, and developing innovative science for world peace.

Nagasaki University's Fundamental Objective

In order to realize its philosophy, Nagasaki University has been promoting the advancement and individualization of education and research under its fundamental objective expressed as, “Nagasaki University continues its role as a ‘center for the transmission of intellectual information’ which is indispensable for the world, while moving forward together with local society.” Also, during the period of the new mid-term goal, maintaining this fundamental objective, we will continue to develop the clear direction of our organizational policy and the student character in order to lead the intellectual growth of society in the 21st century.

Nagasaki University aims:

- (1) to integrate our distinguished research areas of tropical and infectious diseases, radiology, and marine environment biological resources and other fields such as food resources and environment to become an internationally renowned education and research center
- (2) to further advance, individualize, and internationalize education and research, as well as to create influential research results and produce world-class scientists.
- (3) to foster sufficient, extensive ability at the bachelor’s degree level through the coordinated arrangement of both professional and liberal arts education as well as to strengthen the organizational development of the graduate school’s education curriculum, leading to a never-ending line of Nagasaki-University-brand professionals.
- (4) to contribute to a more active, sophisticated, and internationalized education of the local community, its medical care, governmental administration, industry, and economy by giving back to society prominent educational and research achievements which can serve as the driving force of decentralization.
- (5) to promote collaborative research at our overseas research hubs in Asia and Africa as well as improve the development courses for professionals who wish to dedicate themselves to work in international contribution and cooperation for the sustainable development of developing countries.
- (6) to nurture students’ dreams and their human potential, maximizing their abilities as well as improving the environment in order to help young scientists become independent and to create a university campus where young people full of determination and spirit are gathered.
- (7) to directly link reviews and evaluation results to the improvement of education, while reforming the university management system organizationally and continuously, thereby enhancing the management framework of university cooperation.

Contents

Historical Sketch

Historical Sketch	2
-------------------------	---

Organization

Organizational Chart	13
Successive Presidents of Nagasaki University	15
Board of Trustees	16
Members of the Presidential Nominations Committee	16
Members of the Management Committee	16
Members of the Education and Research Council	17
Board Members and Faculty/Administrative Staff	18
Number of Board Members and Faculty/Administrative Staff	20

Education and Research

Faculties and Schools	
School of Global Humanities and Social Sciences	21
Faculty of Education	21
Faculty of Economics	21
School of Medicine	21
School of Dentistry	21
School of Pharmaceutical Sciences	21
School of Engineering	21
Faculty of Environmental Studies	21
Faculty of Fisheries	21
Graduate Schools	
Graduate School of Education	22
Graduate School of Economics	22
Graduate School of Engineering	22
Graduate School of Fisheries Science and Environmental Studies	22
Graduate School of Science and Technology	22
Graduate School of Biomedical Sciences	22
Graduate School of International Health Development	22
Academic Calendar	22

University Facilities

University Research Institute: Institute of Tropical Medicine	23
University Research Institute: Atomic Bomb Disease Institute	23

University Library	23
University Hospital	24
Schools and Kindergarten Affiliated with the Faculty of Education	26
Faculty-affiliated Institutes for Education and Research	27
Center for Health and Community Medicine	27
University Institutes for Education and Research	27
Stations of Educational Research Projects	28

Distinctive Education and Research

Distinctive Research	29
Distinctive Education	29

Number of Students, etc.

Number of Students	33
FY 2014 New Students	35
FY 2013 Graduates and Their Paths after Graduation	36
Change in After-graduation Paths for the Past Five Years	37
Number of Degrees Conferred	38

International Exchange

FY 2014 International Students	39
Agreements on Academic Exchange with Overseas Institutions	40
Faculty Staff Visited Overseas Institutions and International Researchers Visited NU in FY 2013	45

Social Contribution

Center for Industry, University and Government Cooperation	46
Industry-University Cooperation	47

Finances

FY 2014 Budget	48
Funds from Outside the University	48

Campus

Campus Maps	49
Welfare Facilities	53
Land • Buildings • Ships	54
Address/TEL of Faculties, Centers, etc.	56
Location Map	59



Historical Sketch

On November 12, 1857, Dutch army surgeon Pompe van Meerdervoort initiated medical lectures in the Dutch language to government doctor Ryojyun Matsumoto and 11 other persons. This medical school called Igaku Denshusho is the origin of today's School of Medicine as well as Nagasaki University.

1857 . 11	• Igaku Denshusho was established	1876 . 1	• Training Center was renamed Training Center for Elementary School Teacher.
1860	• Yojosho (Sanatorium) was established for citizens with the facilities for the hospital, chemical, pharmaceuticals, library, autopsy, and clinical training. (origin of Nagasaki University Hospital)	5	• Training Center for Elementary School Teacher was renamed Nagasaki Prefectural Normal School.
1861 . 9	• Yojosho (Sanatorium) was improved and Igakusho was built next to it. (Facilities for medical education institution were completed.)	6	• Nagasaki Hospital Medical Training Center was established in Nagasaki Hospital to resume medical education.
1865	• Yojosho (Sanatorium) was renamed Seitokukan School of Medicine. In October, Bunseki Kyurijyo (educational institution to teach basic science including physics and chemistry) was established.	1877 . 4	• Nagasaki Prefectural Normal School was renamed Kiyō Normal School.
1868 . 10	• Seitokukan School of Medicine was renamed the Nagasaki City School of Medicine.	1878 . 1	• Nagasaki Hospital Medical Training Center was renamed Nagasaki Medical School.
1869	• Nagasaki City School of Medicine was renamed Nagasaki Prefectural School of Medicine.	2	• National Nagasaki Normal School was discontinued. Its buildings and equipment were transferred to Nagasaki Prefecture.
1871 . 10	• The Ministry of Education held jurisdiction over Nagasaki Prefectural School of Medicine and changed its name to National Nagasaki Medical School.	6	• Kiyō Normal School was renamed Nagasaki Normal School.
1874	• Due to troop deployment in Taiwan, education function of National Nagasaki Medical School was discontinued whereas hospital function was transferred to the branch hospital.	1879 . 1	• Nagasaki Medical School became prefectural and had Nagasaki Hospital become its affiliated school.
2	• National Nagasaki Normal School was established.	1883	• According to the Ordinance of the Ministry of Education, Nagasaki Medical School was designated as a Class A medical school. (Medical license could be granted after graduation without taking national examinations. Only 13 such schools existed in Japan.)
3	• Nagasaki Elementary School Teacher Training Center was established.	1884 . 6	• Nagasaki Prefectural Women's Normal School was established.
1875	• Due to the completion of troop deployment in Taiwan, buildings of the branch hospital were transferred to Nagasaki Prefecture. With a subsidy from the Japanese government, Nagasaki Hospital was established.	1886 . 4	• Nagasaki Prefectural Women's Normal School merged with Nagasaki Normal School and established its Women's Branch.
2	• Nagasaki Elementary School Teacher Training Center was renamed Training Center.	6	• Nagasaki Normal School, Women's Branch established its affiliated kindergarten.
11	• Elementary School affiliated with National Nagasaki Normal School was established.	6	• According to the Normal School Ordinance, Nagasaki Normal School was renamed Nagasaki Prefectural Normal School for Primary Education.

1887 . 8	<ul style="list-style-type: none"> • According to the Higher Middle School Ordinance, the Fifth Higher Middle School, Department of Medicine was established. Nagasaki Medical School was discontinued in September. 	1921	<ul style="list-style-type: none"> • Nagasaki Prefectural School of Teacher Training for Vocational Supplementary School Education was established in Isahaya-machi.
1890 . 6	<ul style="list-style-type: none"> • The Division of Pharmaceutical Sciences was established in the Fifth Higher Middle School, Department of Medicine. (origin of today's School of Pharmaceutical Sciences) 	1922 . 4	<ul style="list-style-type: none"> • Nagasaki Prefecture donated Nagasaki Hospital to the Japanese government. Nagasaki Hospital was renamed Hospital of Nagasaki Specialized School of Medicine. • Nagasaki Specialized School of Medicine Training School for Nurses and Midwives was established.
1891 . 9	<ul style="list-style-type: none"> • The Fifth Higher Middle School, Department of Medicine and its Division of Pharmaceutical Sciences were relocated to a new building in Urakami Yamazato-mura, Nishisonogi-gun. (origin of the later establishment of Sakamoto Campus) 	1923 . 3	<ul style="list-style-type: none"> • Nagasaki Specialized School of Medicine was promoted to Nagasaki Medical College by the National Medical College System and established its Specialized School of Medicine and Specialized School of Pharmaceutics. • Hospital of Nagasaki Specialized School of Medicine was renamed Nagasaki Medical College Hospital and established its Training School for Nurses and Midwives.
1894 . 9	<ul style="list-style-type: none"> • According to the Higher School Ordinance, the Fifth Higher Middle School, Department of Medicine and its Division of Pharmaceutical Sciences were renamed the Fifth Higher School, Department of Medicine and its Division of Pharmaceutical Sciences, respectively. 	1925 . 4	<ul style="list-style-type: none"> • Nagasaki Medical College, Specialized School of Medicine was discontinued.
1898 . 4	<ul style="list-style-type: none"> • According to the Teacher Education Ordinance, Nagasaki Prefectural Normal School for Primary Education was renamed Nagasaki Prefectural Normal School. 	1928	<ul style="list-style-type: none"> • The Department of Fisheries was established in Nagasaki Prefectural School of Teacher Training for Vocational Supplementary School Education. (origin of today's Faculty of Fisheries)
1901 . 3	<ul style="list-style-type: none"> • According to the Specialized School Ordinance, the Fifth Higher School, Department of Medicine became independent from the Fifth Higher School and established Nagasaki Specialized School of Medicine as well as its Division of Pharmaceutical Sciences. 	1929 . 2	<ul style="list-style-type: none"> • Nagasaki Medical College Hospital Training School for Nurses and Midwives was renamed Nagasaki Medical College Hospital Training School for Midwives and Nurses.
1903	<ul style="list-style-type: none"> • Nagasaki Prefectural Nagasaki Hospital Training School for Nurses was established. 	3	<ul style="list-style-type: none"> • The Advanced Course of Trade was established in Nagasaki Higher Commercial School.
1905 . 3	<ul style="list-style-type: none"> • Nagasaki Higher Commercial School was established. (origin of today's Faculty of Economics on Katafuchi Campus) 	12	<ul style="list-style-type: none"> • Nagasaki Medical College Nomo Marine Biological Laboratory was established.
1908 . 4	<ul style="list-style-type: none"> • Nagasaki Prefectural Normal School, Women's Branch became independent from Nagasaki Prefectural Normal School and established Nagasaki Prefectural Women's Normal School. 	1935 . 4	<ul style="list-style-type: none"> • Nagasaki Prefectural School of Teacher Training for Vocational Supplementary School Education was renamed Nagasaki Prefectural School of Teacher Training for Youth School Education.
1917 . 5	<ul style="list-style-type: none"> • The Department of Overseas Trade was established in Nagasaki Higher Commercial School. 	1937 . 4	<ul style="list-style-type: none"> • Nagasaki prefectural Normal School was relocated to a new building in Nishiurakami-mura, Nishisonogi-gun. (site of today's Elementary School and Lower Secondary School affiliated with the Faculty of Education)
1920 . 11	<ul style="list-style-type: none"> • Research Building was donated to Nagasaki Higher Commercial School. (today's Keirin Hall) 		

1939 . 5	<ul style="list-style-type: none"> • Nagasaki Medical College Temporary Specialized School of Medicine was established. 	8	<ul style="list-style-type: none"> • The atomic bomb was dropped in Nagasaki City. A total of 979 teachers and students were victimized: 897 from Nagasaki Medical College (including Specialized School of Medicine and Specialized School of Pharmaceutics), 54 from Nagasaki Normal School, 27 from Nagasaki Higher Commercial School, and one from Nagasaki Youth Normal School.
1942 . 3	<ul style="list-style-type: none"> • Nagasaki Prefectural School of Teacher Training for Youth School Education, Women's School was established in Isahaya Women's High School. 		
4	<ul style="list-style-type: none"> • Nagasaki Medical College East Asia Research Institute of Endemics was established. (origin of today's Institute of Tropical Medicine) 		
9	<ul style="list-style-type: none"> • Nagasaki Higher Commercial School Research Building was renamed Great East Asia Economic Research Institute. 		
1943 . 4	<ul style="list-style-type: none"> • According to the Normal School Education Ordinance, Nagasaki Prefectural Normal School and Nagasaki Prefectural Women's Normal School were merged to establish National Nagasaki Normal School and was promoted to specialized school category. 		
1944 . 3	<ul style="list-style-type: none"> • Nagasaki Higher Commercial School was renamed Nagasaki Specialized School of Economics. 		
4	<ul style="list-style-type: none"> • Nagasaki Specialized School of Economics established Nagasaki Specialized School of Industrial Management on its campus. 		
	<ul style="list-style-type: none"> • According to the Normal School Education Ordinance, Nagasaki Prefectural School of Teacher Training for Youth School Education (Men's Branch and Women's Branch) became National Nagasaki Youth Normal School, and was promoted to specialized school category. Nagasaki Prefectural School of Teacher Training for Youth School Education, Department of Fisheries was discontinued. 		
	<ul style="list-style-type: none"> • Nagasaki Medical College Temporary Specialized School of Medicine was renamed Nagasaki Medical College Specialized School of Medicine. 		
1945 . 6	<ul style="list-style-type: none"> • Nagasaki Medical College Hospital Training School for Midwives and Nurses was renamed Nagasaki Medical College Hospital Women's School of Public Welfare. 		

• History of Reconstruction after the atomic bombing is as follows.

1946 . 4	<ul style="list-style-type: none"> • Nagasaki Specialized School of Industrial Management was discontinued. Great East Asia Economic Research Institute was renamed Institute of Industry Management. • Nagasaki Medical College East Asia Research Institute of Endemics was renamed Nagasaki Medical College Research Institute of Endemics. 	6	<ul style="list-style-type: none"> • Nursing School was established in the School of Medicine. • Nagasaki Medical College Specialized School of Pharmaceutics, Nagasaki Specialized School of Economics, Nagasaki Normal School, and Nagasaki Youth Normal School were discontinued.
1947 . 3	<ul style="list-style-type: none"> • Nagasaki Medical College Specialized School of Medicine was discontinued. 	5	<ul style="list-style-type: none"> • The Department of Student Advising on Public Welfare Matters was renamed the Student Advising Department.
1948 . 4	<ul style="list-style-type: none"> • Nagasaki Higher School (under the old system of education) was established. • Nagasaki Youth Normal School, Department of Fisheries was reestablished. 	1953 . 3	<ul style="list-style-type: none"> • The Faculty of Arts and Sciences was relocated to Ohashi-machi, Nagasaki City. (today's Bunkyo Campus)
1949 . 5	<ul style="list-style-type: none"> • Nagasaki University merged with Nagasaki Medical College, Nagasaki Medical College Specialized School of Pharmaceutics, Nagasaki Specialized School of Economics, Nagasaki Normal School, Nagasaki Youth Normal School, and Nagasaki Higher School to create a new University. It then established five faculties; Arts and Sciences (Course of Elementary School Teacher Training, Course of Lower Secondary School and High School Teacher Training), Economics (Department of Economics and Department of Commerce), Medicine (School of Medicine), Pharmaceutical Sciences (School of Pharmacy), and Fisheries (Department of Fisheries, Department of Marine Products Processing, and Department of Fishery Stock Enhancement), one library, and the Research Institute of Endemics. The Faculty of Arts and Sciences and the School of Medicine further set up the Elementary School, Lower Secondary School, Kindergarten, Hospital, and Nursing School. 	4	<ul style="list-style-type: none"> • The Special Advanced Courses were established in the Faculty of Fisheries.
1950 . 3	<ul style="list-style-type: none"> • Under the National School Establishment Law, Nagasaki University merged with Nagasaki Medical College, Nagasaki Medical College Specialized School of Pharmaceutics, Nagasaki Specialized School of Economics, Nagasaki Normal School, Nagasaki Youth Normal School, and Nagasaki Higher School to create a new University. It then established five faculties; Arts and Sciences (Course of Elementary School Teacher Training, Course of Lower Secondary School and High School Teacher Training), Economics (Department of Economics and Department of Commerce), Medicine (School of Medicine), Pharmaceutical Sciences (School of Pharmacy), and Fisheries (Department of Fisheries, Department of Marine Products Processing, and Department of Fishery Stock Enhancement), one library, and the Research Institute of Endemics. The Faculty of Arts and Sciences and the School of Medicine further set up the Elementary School, Lower Secondary School, Kindergarten, Hospital, and Nursing School. 	1954 . 4	<ul style="list-style-type: none"> • Nagasaki University, Omura Branch was renamed Nagasaki University Extension Campus. • The Advanced Course was established in the Faculty of Economics.
1950 . 5	<ul style="list-style-type: none"> • Research Division System was introduced into the School of Medicine. • Graduate School of Medical Sciences was established. • School of Midwifery was established in the School of Medicine. 	1955 . 4	<ul style="list-style-type: none"> • The Student Advising Department was renamed the Student Services Department.
1951 . 3	<ul style="list-style-type: none"> • The Student Advising Department was renamed the Student Services Department. • The Advanced Course was established in the School of Pharmaceutical Sciences. 	1956 . 1	<ul style="list-style-type: none"> • The Student Advising Department was renamed the Student Services Department.
1951 . 3	<ul style="list-style-type: none"> • The Student Advising Department was renamed the Student Services Department. • The Advanced Course was established in the School of Pharmaceutical Sciences. 	4	<ul style="list-style-type: none"> • The Advanced Course was established in the School of Pharmaceutical Sciences.
1951 . 3	<ul style="list-style-type: none"> • Nagasaki Medical College was discontinued. 	1960 . 3	<ul style="list-style-type: none"> • Nagasaki Medical College was discontinued.
1951 . 3	<ul style="list-style-type: none"> • The Advanced Course was established in the Faculty of Fisheries. 	4	<ul style="list-style-type: none"> • The Advanced Course was established in the Faculty of Fisheries.
1951 . 3	<ul style="list-style-type: none"> • Atomic Bomb Disease Institute was established in the School of Medicine. 	1962 . 4	<ul style="list-style-type: none"> • Atomic Bomb Disease Institute was established in the School of Medicine.
1951 . 3	<ul style="list-style-type: none"> • Faculty of Liberal Arts was established. (Extension Campus was discontinued) • Construction of the training ship "Nagasaki-Maru" of the Faculty of Fisheries was completed. 	1964 . 4	<ul style="list-style-type: none"> • Faculty of Liberal Arts was established. (Extension Campus was discontinued) • Construction of the training ship "Nagasaki-Maru" of the Faculty of Fisheries was completed.

1965 . 3	<ul style="list-style-type: none"> • The Advanced Course in the School of Pharmaceutical Sciences was discontinued. 	1971 . 2	<ul style="list-style-type: none"> • The libraries were restructured. (Branch libraries of the Faculty of Education, the Faculty of Fisheries, the School of Pharmaceutical Sciences, and the Institute of Tropical Medicine were discontinued while branch libraries of the Faculty of Economics and the School of Medicine were still continued.)
4	<ul style="list-style-type: none"> • Graduate School of Pharmaceutical Sciences was established. • The Advanced Course was established in the Faculty of Arts and Sciences. 	4	<ul style="list-style-type: none"> • School for Handicapped Children was established in the Faculty of Education. • The Department of Commerce, Faculty of Economics was renamed the Department of Management. • The Department of Pharmaceutical Chemistry was established in the Graduate School of Pharmaceutical Sciences.
1966 . 4	<ul style="list-style-type: none"> • Health Center was established. • The School of Engineering (Departments of Mechanical Engineering and Electrical Engineering) was established. • Faculty of Arts and Sciences was renamed the Faculty of Education. The Advanced Course in the Faculty of Arts and Sciences was renamed the Advanced Course in the Faculty of Education. 	4	<ul style="list-style-type: none"> • The Advanced Courses (Mechanical Engineering, Electrical Engineering, and Structural Engineering) were established in the School of Engineering.
1967 . 4	<ul style="list-style-type: none"> • School for Handicapped Children Teacher Training Course was established in the Teacher Education Division, Faculty of Education. • The Department of Pharmaceutical Chemistry was established in the School of Pharmaceutical Sciences. • The Department of Structural Engineering was established in the School of Engineering. 	1972 . 4	<ul style="list-style-type: none"> • The Department of Industrial Chemistry was established in the School of Engineering.
6	<ul style="list-style-type: none"> • Research Institute of Endemics was renamed the Institute of Tropical Medicine. • The Fisheries Laboratory was established in the Faculty of Fisheries. 	5	<ul style="list-style-type: none"> • Atomic Bomb Medical Information Center was established in the School of Medicine. • Medicinal Plant Garden was established in the School of Pharmaceutical Sciences.
1968 . 4	<ul style="list-style-type: none"> • The Department of Trade was established in the Faculty of Economics. 	1973 . 4	<ul style="list-style-type: none"> • The Departments of Fishing, Fish Production, and Fish Breeding of the Faculty of Fisheries were restructured to establish the Department of Fisheries. • The Advanced Course in Civil Engineering was established in the School of Engineering. • Educational Engineering Center was established in the Faculty of Education.
1969 . 4	<ul style="list-style-type: none"> • The Department of Civil Engineering was established in the School of Engineering. 	12	
1970 . 4	<ul style="list-style-type: none"> • Electric Computer Center was established. • The Advanced Courses in the Faculty of Fisheries were discontinued. (The Advanced Courses in Fishing, Fish Production, and Fish Breeding were discontinued, leaving in operation only the Advanced Course in Officer Training, with its name changed to the Advanced Course in Deep-sea Fishing.) • Graduate School of Fisheries was established. • The Department of Materials Science and Engineering was established in the School of Engineering. 	1974 . 4	<ul style="list-style-type: none"> • The Departments of Fishing, Fish Production, and Fish Breeding of the Graduate School of Fisheries were restructured to established the Department of Fisheries. • The Advanced Course in Materials Science and Engineering was established in the School of Engineering. • The Kindergarten Teacher Training Course was established in the Teacher Education Division, Faculty of Education.

	<ul style="list-style-type: none"> • Atomic Bomb Medical Information Center was renamed the Scientific Data Center for Atomic Bomb Disaster. 	11	<ul style="list-style-type: none"> • Drainage Analysis Science Center was established. (Drainage Analysis Center was discontinued.)
1975 . 4	<ul style="list-style-type: none"> • The Reference Room for the Tropical Medicine was established in the Institute of Tropical Medicine. 	1980 . 4	<ul style="list-style-type: none"> • Laboratory Animal Center for Biomedical Research was established in the School of Medicine.
6	<ul style="list-style-type: none"> • Construction of the training ship “Kakuyo-Maru” of the Faculty of Fisheries was completed. 	1981 . 4	<ul style="list-style-type: none"> • The preparatory office for founding of the University Hospital of the School of Dentistry was established.
1976 . 4	<ul style="list-style-type: none"> • Drainage Analysis Center was established. 	1982 . 4	<ul style="list-style-type: none"> • The Department of Electronic Engineering was established in the Graduate School of Engineering Science.
	<ul style="list-style-type: none"> • The Department of Electronic Engineering was established in the School of Engineering. 		<ul style="list-style-type: none"> • University Hospital of the School of Dentistry was established.
	<ul style="list-style-type: none"> • Graduate School of Engineering Science was established. 		<ul style="list-style-type: none"> • The preparatory office for founding of the University Hospital of the School of Dentistry was discontinued.
1977 . 4	<ul style="list-style-type: none"> • Shimabara Joint Training Center for National Universities in Kyushu Area was established. 		<ul style="list-style-type: none"> • The Divisions of Economics & Law and Management Information, Department of Commerce and Economics, Junior College of Business were reorganized into the Divisions of Economics, Economic Law, and Management Information.
	<ul style="list-style-type: none"> • The Department of Civil Engineering was established in the Graduate School of Engineering Science. 	1983 . 4	<ul style="list-style-type: none"> • The Department of Mechanical Engineering II was established in the Graduate School of Engineering Science.
	<ul style="list-style-type: none"> • The Advanced Courses (Mechanical Engineering, Electrical Engineering, and Structural Engineering) in the School of Engineering were discontinued. 		<ul style="list-style-type: none"> • The preparatory office for founding of the School of Allied Medical Sciences was established.
	<ul style="list-style-type: none"> • The preparatory office for founding of the School of Dentistry was established. 		<ul style="list-style-type: none"> • International House was established.
	<ul style="list-style-type: none"> • The Department of Commerce, Junior College of Business was renamed the Department of Commerce and Economics (Economics & Law and Management Information). 	1984 . 4	<ul style="list-style-type: none"> • School of Allied Medical Sciences (Department of Nursing) was established.
1978 . 3	<ul style="list-style-type: none"> • RI Center was established. 		<ul style="list-style-type: none"> • The preparatory office for founding of the School of Allied Medical Sciences was discontinued.
4	<ul style="list-style-type: none"> • The Department of Mechanical Engineering II was established in the School of Engineering. 		<ul style="list-style-type: none"> • Junior College of Business was renamed the Junior College of Commerce.
1979 . 4	<ul style="list-style-type: none"> • Animal Research Center for Tropical Infections was established in the Institute of Tropical Medicine. 		<ul style="list-style-type: none"> • 18 divisions of the Department of Fisheries, Faculty of Fisheries were reorganized into six large ones.
	<ul style="list-style-type: none"> • The Branch Library of the School of Medicine was renamed the Medical Library. 		<ul style="list-style-type: none"> • The Departments of Physical Therapy and Work Therapy were established in the School of Allied Medical Sciences.
5	<ul style="list-style-type: none"> • Information Center was established (Electric Computer Center was discontinued). 	10	
10	<ul style="list-style-type: none"> • The Department of Dentistry, School of Dentistry was established. 		
	<ul style="list-style-type: none"> • The preparatory office for founding of the School of Dentistry was discontinued. 		

1986 . 4	<ul style="list-style-type: none"> • Nursing School, School of Medicine was discontinued. • Graduate School of Dentistry was established. • The Departments of Pharmacy and Pharmaceutical Chemistry of the Graduate School of Pharmaceutical Sciences were restructured to establish the Department of Medical Pharmacy (Master's and Doctoral courses). • The Departments of Pharmacy and Pharmaceutical Chemistry of the School of Pharmaceutical Sciences were restructured to establish the Department of Pharmaceutical Sciences. • Center for Practical Education Research and Training was established in the Faculty of Education. (Educational Engineering Center was discontinued.) 		
6	<ul style="list-style-type: none"> • Center for Measurement Analysis was established. • Center for International Student Advising was established. 		
9	<ul style="list-style-type: none"> • Environmental Protection Center was established. (Drainage Analysis Science Center was discontinued.) 		
1987 . 4	<ul style="list-style-type: none"> • The School of Midwifery, School of Medicine was discontinued. • The Department of Marine Science and Development was established in the Graduate School of Engineering Science (Doctoral course). • The Diploma Course (Midwifery) was established in the School of Allied Medical Sciences. 		
1988 . 4	<ul style="list-style-type: none"> • Graduate School of Marine Science and Engineering was established (Doctoral course). • The Department of Marine Science and Development was transferred from the Graduate School of Engineering Science to the Graduate School of Marine Science and Engineering. 		
		1989 . 5	<ul style="list-style-type: none"> • The Departments of Electric Engineering and Electronic Engineering of the School of Engineering were restructured to establish the Department of Electrical Engineering and Computer Science. • Information Science Center was established. (Information Center was discontinued.) • Institute of Tropical Medicine was promoted to the National Collaborative Institute.
		1990 . 4	<ul style="list-style-type: none"> • The Departments of Mechanical Engineering and Mechanical Engineering of the School of Engineering were restructured to establish the Department of Mechanical Systems Engineering.
		6	<ul style="list-style-type: none"> • Joint Research Center was established.
		1991 . 4	<ul style="list-style-type: none"> • In the Faculty of Economics, eight divisions of the Department of Economics were reorganized into three large ones; eight divisions of the Department of Business were reorganized into two large ones, and six divisions of the Department of Trade were reorganized into two large ones of the Department of Finance. • In the School of Engineering, four divisions of the Department of Structural Engineering were reorganized into two large ones; four divisions of the Department of Civil Engineering were reorganized into two large ones; four divisions of the Department of Materials Science and Engineering were reorganized into two large ones; and four divisions of the Department of Industrial Chemistry were reorganized into two large ones of the Department of Applied Chemistry. • Radioisotope Research Center was established. (RI Center was discontinued.)
		1992 . 4	<ul style="list-style-type: none"> • The Departments of Electrical Engineering and Electronic Engineering of the Graduate School of Engineering Science were restructured to establish the Department of Electrical Engineering and Computer Science.
		1993 . 4	<ul style="list-style-type: none"> • Education and Research Center for Life-long Learning was established.
		1994 . 4	<ul style="list-style-type: none"> • Graduate School of Education was established. • The Advanced Course in the Faculty of Education was discontinued.

	<ul style="list-style-type: none"> • The Departments of Mechanical Engineering and Mechanical Engineering of the Graduate School of Engineering Science were restructured to establish the Department of Mechanical Systems Engineering. 		<ul style="list-style-type: none"> • The Divisions of Physical Education and Home Economics were established in the Department of Curriculum & Teaching, Graduate School of Education.
6	<ul style="list-style-type: none"> • 10 divisions of the Institute of Tropical Medicine were reorganized into three large ones. 		<ul style="list-style-type: none"> • The Department of Electrical Engineering and Computer Science of the School of Engineering was reorganized into the Department of Electrical and Electronic Engineering and the Department of Computer and Information Sciences.
1995 . 4	<ul style="list-style-type: none"> • Graduate School of Economics was established. • The Advanced Course in the Faculty of Economics was discontinued. • The Department of Industrial Chemistry of the Graduate School of Engineering Science was renamed the Department of Applied Chemistry. 		<ul style="list-style-type: none"> • Center for Instrumental Analysis was established. (Center for Measurement Analysis was discontinued.)
1996 . 5	<ul style="list-style-type: none"> • International Student Center was established. (Center for International Student Advising was discontinued.) 	1999 . 4	<ul style="list-style-type: none"> • The Department of Clinical Pharmacy was established in the Graduate School of Pharmaceutical Sciences. • The position of Vice President was established. (Director of the Student Services Department was discontinued.)
1997 . 4	<ul style="list-style-type: none"> • Atomic Bomb Disease Institute was established in the School of Medicine. (Atomic Bomb Disease Institute and Scientific Data Center for Atomic Bomb Disaster were discontinued.) • Marine Research Institute was established in the Faculty of Fisheries. (Fisheries laboratory was discontinued.) • Tropical Information Center was established in the Institute of Tropical Medicine. (The reference Room for the Tropical Medicine was discontinued.) 		<ul style="list-style-type: none"> • The Student Affairs Department was established in accordance with the merger of the Administration Bureau with the Student Services Department (Student Services Department was discontinued).
10	<ul style="list-style-type: none"> • Faculty of Environmental Studies was established. • Faculty of Liberal Arts was discontinued. • The Departments of Economics, Business, and Finance of the Faculty of Economics were restructured to establish the Department of General Economics. 	2000 . 4	<ul style="list-style-type: none"> • The Divisions of Social Studies Education and Natural Science Education were established in the Department of Education, Graduate School of Education. • The Department of Infectious Research was established in the Graduate School of Medical Sciences. • Graduate School of Science and Technology was established. • Gene Research Center was established.
1998 . 4	<ul style="list-style-type: none"> • The Elementary School Teacher Training Course, Lower Secondary School Teacher Training Course, Disabled Children's School Teacher Training Course, and Kindergarten Teacher Training Course of the Faculty of Education were reorganized into the Teacher Education Division and the Information Technology and Cultural Studies Division. 	2001 . 4	<ul style="list-style-type: none"> • Junior College of Commerce was discontinued. • The Department of Marine Production and the Department of Marine Resource of the Graduate School of Marine Science and Engineering were reorganized into the Department of Marine Science and Technology and the Department of Material Science, respectively. • Center for Education Research and Training was established. (Center for Practical Education Research and Training was discontinued.)

	<ul style="list-style-type: none"> • Research Center for Tropical Infectious Diseases was established in the Institute of Tropical Medicine. (Tropical Disease Information Center was discontinued.) • One large and 31 small divisions of the School of Medical Sciences, School of Medicine were reorganized into six large ones. 		
10	<ul style="list-style-type: none"> • The School of Health Sciences was established in the School of Medicine. 		
2002 . 4	<ul style="list-style-type: none"> • Graduate School of Environmental Studies was established. • Graduate School of Biomedical Sciences was established. • Research and Development Center for Higher Education was established. • Admission Center was established. • Six large divisions of the School of Medical Sciences, School of Medicine were reorganized into four large ones. • 18 small divisions of the Department of Dentistry, School of Dentistry were reorganized into three large ones. • Four large divisions of the Department of Pharmaceutical Sciences, School of Pharmaceutical Sciences were reorganized into two large ones. 	12	<ul style="list-style-type: none"> • The Departments of Policies for the Human-Environmental Symbiosis (Master's course), Environmental Conservation and Planning (Master's course), and Environmental Science (Doctoral course) were established in the Graduate School of Science and Technology. • The Diploma Course in the Faculty of Fisheries was discontinued. • Intellectual Property Center was established. • Information Media Center was established. (Information Science Center was discontinued) • Joint Research Center was established. (Joint Research Center, Center for Instrumental Analysis, and Environmental Protection Center were discontinued.)
		2005 . 4	<ul style="list-style-type: none"> • The Headquarters for Planning and Evaluation was established. • Center for International Collaborative Research was established. • Institute for East China Sea Research was established. (Marine Research Center, Faculty of Fisheries was discontinued.) • Center for Total Human Education and Child Welfare was established. (available for a limited time only) • School of Allied Medical Sciences was discontinued.
2003 . 4	<ul style="list-style-type: none"> • Atomic Bomb Disease Institute and the Medicinal Plant Garden were transferred from the School of Medicine to the Graduate School of Biomedical Sciences. • Center for Frontier Life Sciences was established. (Radioisotope Research Center, Gene Research Center, and Biomedical Research Center were discontinued.) 	2006 . 2	<ul style="list-style-type: none"> • The Department of Marine Science and Technology, Graduate School of Science and Technology was discontinued.
		4	<ul style="list-style-type: none"> • Master of Tropical Medicine and Master of Health Sciences were established in the Graduate School of Biomedical Sciences.
10	<ul style="list-style-type: none"> • University Hospital of Medicine and Dentistry were established (University Hospitals of the School of Medicine and the School of Dentistry were restructured). 		<ul style="list-style-type: none"> • The Department of Pharmacy, School of Pharmaceutical Sciences was reorganized into Pharmacy (six-year program) and Pharmaceutical Sciences (four-year program).
2004 . 4	<ul style="list-style-type: none"> • Nagasaki University was established by the Nagasaki University, National University Corporation under the National University Corporation Law. • The Department of Managerial Decision Making was established in the Graduate School of Economics (Doctoral course). 	5	<ul style="list-style-type: none"> • Graduate School of Dentistry was discontinued.
		7	<ul style="list-style-type: none"> • Nagasaki University Organization for Cooperation of Industry, University, and Government was established.
		2007 . 2	<ul style="list-style-type: none"> • Graduate School of Pharmaceutical Sciences was discontinued.

3	<ul style="list-style-type: none"> • Graduate School of Environmental Studies was discontinued. 	2011 . 4	<ul style="list-style-type: none"> • School of Engineering's seven Departments (Mechanical Systems Engineering, Electrical and Electronic Engineering, Computer and Information Sciences, Structural Engineering, Civil Engineering, Materials Science and Engineering, and Applied Chemistry) were restructured into one Department, Engineering.
2008 . 4	<ul style="list-style-type: none"> • The Information Technology and Cultural Studies Division of the Faculty of Education was merged into the Teacher Education Division. • The Department of Teaching Skills Development and Practice (Master's Course) and the Department of Teaching Training and Practice (Professional Degree Program) were established in the Graduate School of Education. • Graduate School of International Health Development was established. • Center for Infectious Disease Research in Asia and Africa and Tropical Medicine Museum were established in the Institute of Tropical Medicine. Research Center for Tropical Infectious Diseases was discontinued. • Health Center was reorganized into the Center for Health and Community Medicine. 	6	<ul style="list-style-type: none"> • Graduate School of Science and Technology was restructured to establish Graduate School of Engineering and Graduate School of Fisheries Science and Environmental Studies. • Institute of Tropical Medicine's three Departments were restructured into four Department • Institute for East China Sea Research was restructured to establish Institute for East China Sea Research affiliated with Graduate School of Fisheries Science and Environmental Studies. • Center for Total Human Education and Child Welfare was discontinued.
2009 . 4	<ul style="list-style-type: none"> • University Hospital of Medicine and Dentistry was restructured and renamed University Hospital. 	12	<ul style="list-style-type: none"> • Center for Industry, University and Government Cooperation was established. (Intellectual Property Center Joint Research Center and Education and Research Center for Lifelong Learning were discontinued.)
10	<ul style="list-style-type: none"> • Center for Gender Equality was established. (available for a limited time only) 	12	<ul style="list-style-type: none"> • Research Promotion Section was established.
2010 . 4	<ul style="list-style-type: none"> • Master's Course in Pharmaceutical Sciences was established in the Graduate School of Biomedical Sciences. • Center for Public Relations Strategy was established. • Center for International Collaborative Research Nagasaki University Tokyo Office was established. • Advanced Computing Center was established. 	2012 . 1	<ul style="list-style-type: none"> • Medical Innovation Center was established.
11	<ul style="list-style-type: none"> • Center for International Collaborative Research Nagasaki University Tokyo Office was restructured to establish Nagasaki University Tokyo Office. 	4	<ul style="list-style-type: none"> • Master and Doctoral courses of Pharmaceutical Sciences were established in the Graduated School of Biomedical Sciences. • The Graduate School of Medical Sciences closed. • Center for Language Studies was established. • Research Center for Nuclear Weapons Abolition was established.
		12	<ul style="list-style-type: none"> • Center for Regional Educational Partnerships was established.
		2013 . 4	<ul style="list-style-type: none"> • Atomic Bomb Disease Institute affiliated with Graduate School of Biomedical Sciences was restructured to establish Atomic Bomb Disease Institute attached to Nagasaki University.
		7	<ul style="list-style-type: none"> • Animal Research Center for Tropical Infectious was discontinued.

8

- Student Accessibility Office was established.

10

- Liaison Center for International Education was established. (International Student Center was discontinued.)
- Center for Educational Innovation was established. (Research and Development Center for Higher Education was integrated with Admission Center.)

2014 . 4

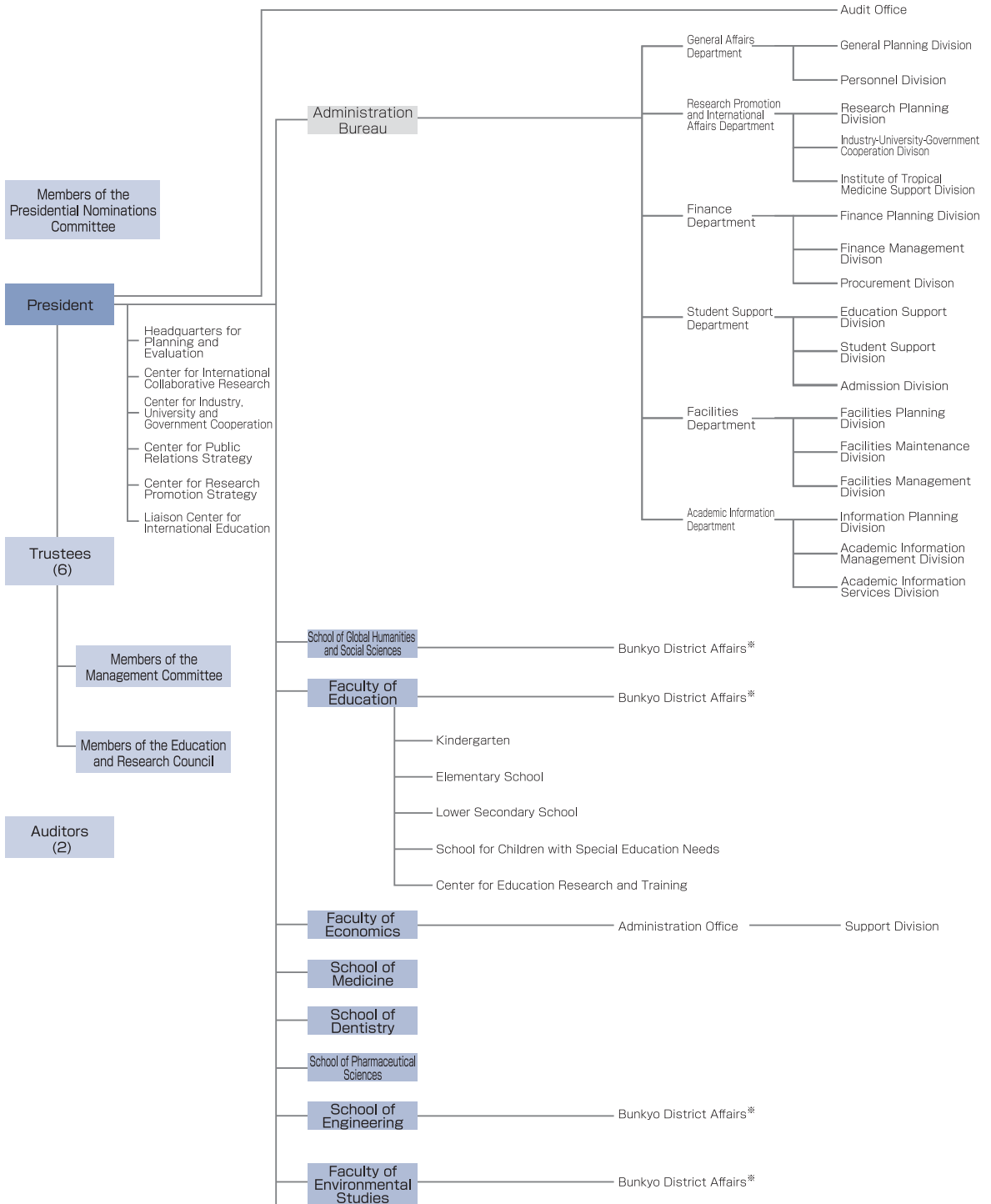
- Center for Research Promotion Strategy was established. (Research Promotion Section was discontinued.)
- School of Global Humanities and Social Sciences was established.
- Department of Teaching Training and Practice, Graduate School of Education was reorganized. (Department of Teaching Skills Development and Practice was discontinued.)
- Center for Information and Communication Technology was established. (Information Media Center was discontinued.)
- Research and Support Center for the Future of Fukushima was established.

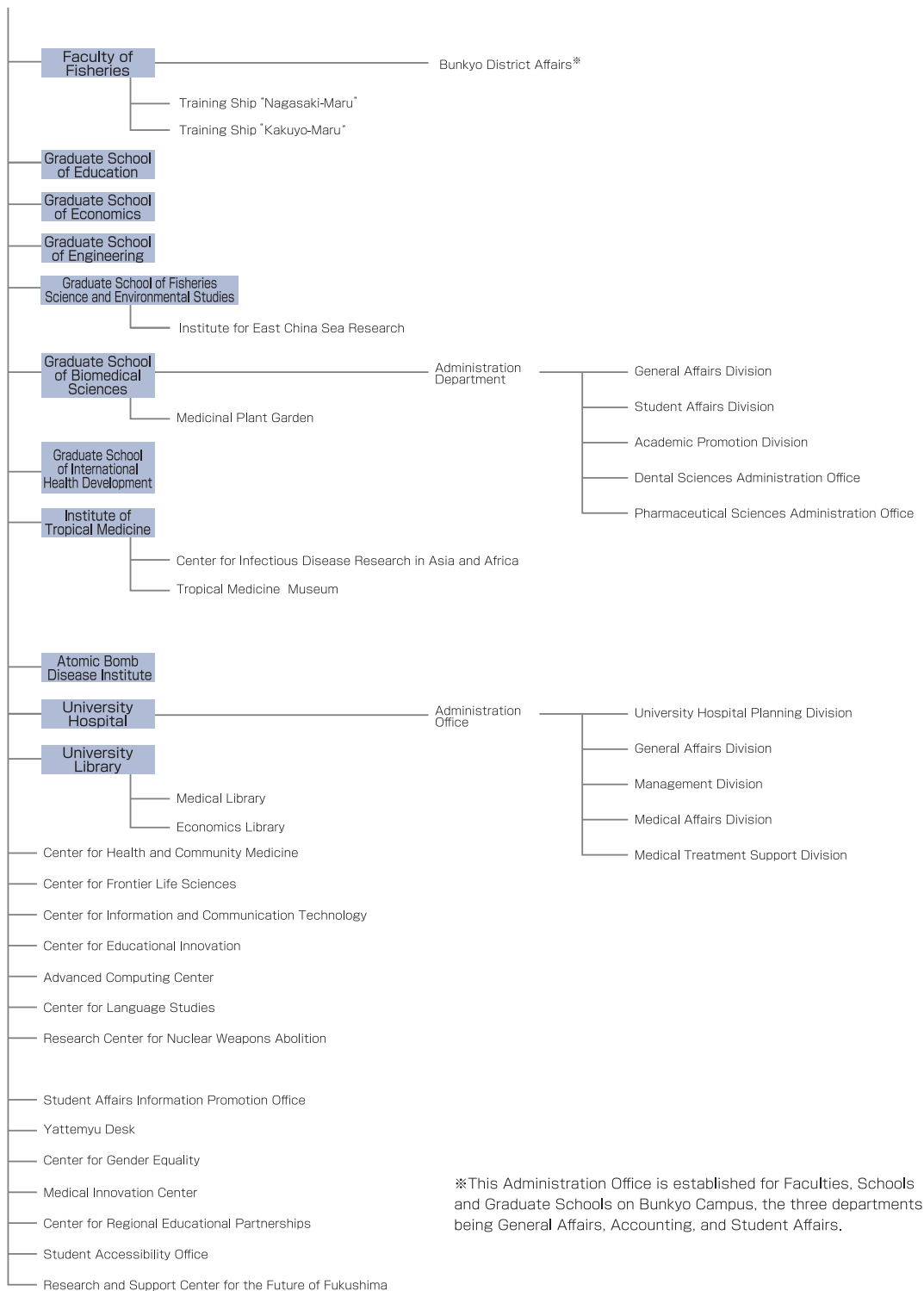


Organization

Organizational Chart

2014 . 5 . 1





※This Administration Office is established for Faculties, Schools and Graduate Schools on Bunkyo Campus, the three departments being General Affairs, Accounting, and Student Affairs.



Successive Presidents of Nagasaki University

1 st	Kiyoshi Takase	(June 29,1949 June 5,1952)
(Acting President)	Shingo Ikeda	(June 6,1952 November 17,1952)
2 nd	Kohei Koyano	(November 18,1952 November 17,1958)
3 rd	Seiichi Kitamura	(November 18,1958 November 17,1962)
4 th	Nariyuki Izumi	(November 18,1962 November 17,1966)
5 th	Toshiro Goto	(November 18,1966 April 3,1969)
(Acting President)	Michinori Kurihara	(April 4,1969 May 6,1969)
6 th	Masayuki Nakatsuka	(May 7,1969 July 31,1974)
(Acting President)	Masato Yasuda	(August 1,1974 October 10,1974)
7 th	Kanesaburo Gushima	(October 11,1974 October 10,1980)
8 th	Hideo Fukumi	(October 11,1980 October 10,1984)
9 th	Masato Yasuda	(October 11,1984 October 10,1988)
10 th	Hideo Tsuchiyama	(October 11,1988 October 10,1992)
11 th	Tetsuo Yokoyama	(October 11,1992 October 10,1998)
12 th	Takayoshi Ikeda	(October 11,1998 October 10,2002)
13 th	Hiroshi Saito	(October 11,2002 October 10,2008)
14 th	Shigeru Katamine	(October 11,2008 Present)

Board of Trustees	2014 . 4 . 1
--------------------------	--------------

Chairperson Shigeru Katamine	President
Hiroshi Yamasaki	Trustee (General Affairs and Finance)
Hirotooshi Fukunaga	Trustee (Personnel)
Nobuo Matsusaka	Trustee (Educational Affairs)
Susumu Shirabe	Trustee (Research and Social Contribution)
Shunichi Yamashita	Trustee (International Affairs and University Research Institutes)
Shigeru Kohno	Trustee (Hospital)

Members of the Presidential Nominations Committee	2014 . 6 . 16
--	---------------

Chairperson Michitami Yano	Honorary Director National Hospital Organization Nagasaki Medical Center
Hirotooshi Fukunaga	Trustee (Personal)
Susumu Shirabe	Trustee (Research and Social Contribution)
Isao Shimokawa	Dean, School of Medicine
Koji Nakayama	Dean, School of Dentistry
Morio Nakayama	Dean, School of Pharmaceutical Sciences
Akihiro Taimura	Dean, Faculty of Environmental Studies
Takakazu Ishimatsu	Dean, Graduate School of Engineering
Takehiko Koji	Dean, Graduate School of Biomedical Sciences
Tatsuro Sakimoto	Director, Kumamoto Study Center the Open University of Japan
Hodo Nakamura	Governor of Nagasaki
Tomihisa Taue	Mayor of Nagasaki
Masatoshi Miyawaki	President, The Eighteenth Bank, Ltd .
Kimitaka Morioka	Acting Director, Mitsubishi Heavy Industries, Ltd. Nagasaki Shipyard & Machinery Works Main Plant

Members of the Management Committee	2014 . 4 . 1
--	--------------

Chairperson Shigeru Katamine	President
Hiroshi Yamasaki	Trustee (General Affairs and Finance)
Shunichi Yamashita	Trustee (International Affairs and University Research Institutes)
Shigeru Kohno	Trustee (Hospital)
Tadashi Sakuma	Dean, School of Global Humanities and Social Sciences
Hiromasa Okada	Dean, Faculty of Economics
Isao Shimokawa	Dean, School of Medicine
Osamu Arakawa	Dean, Faculty of Fisheries
Takakazu Ishimatsu	Dean, Graduate School of Engineering
Takehiko Koji	Dean, Graduate School of Biomedical Sciences
Kiyoko Ikegami	Professor at the Graduate School of Nihon University
Tatsuro Sakimoto	Director, Kumamoto Study Center the Open University of Japan

Izumi Kobayashi	External Director, ANA Holdings Inc. External Director, Suntory Holdings Limited
Ryoki Sugita	Chairman, Japan Center for Economic Research
Hodo Nakamura	Governor of Nagasaki
Tomihisa Taue	Mayor of Nagasaki
Naritoshi Abe	Vice President, Association of Nagasaki High School Principals
Masatoshi Miyawaki	President, The Eighteenth Bank, Ltd.
Kimitaka Morioka	Acting Director, Mitsubishi Heavy Industries, Ltd. Nagasaki Shipyard & Machinery Works Main Plant
Michitami Yano	Honorary Director National Hospital Organization Nagasaki Medical Center

Members of the Education and Research Council

2014 . 4 . 1

Chairperson	Shigeru Katamine	President
	Hirotohi Fukunaga	Trustee (Personal)
	Nobuou Matsusaka	Trustee (Educational Affairs)
	Susumu Shirabe	Trustee (Research and Social Contribution)
	Shunichi Yamashita	Trustee (International Affairs and University Research Institutes)
	Shigeru Kohno	Trustee (Hospital)
	Tadashi Sakuma	Dean, School of Global Humanities and Social Sciences
	Takashi Fujiki	Dean, Faculty of Education
	Hiromasu Okada	Dean, Faculty of Economics
	Isao Shimokawa	Dean, School of Medicine
	Koji Nakayama	Dean, School of Dentistry
	Morio Nakayama	Dean, School of Pharmaceutical Sciences
	Akihiro Taimura	Dean, Faculty of Environmental Studies
	Osamu Arakawa	Dean, Faculty of Fisheries
	Takakazu Ishimatsu	Dean, Graduate School of Engineering
	Takashi Hayase	Dean, Graduate School of Fisheries Science and Environmental Studies
	Takehiko Koji	Dean, Graduate School of Biomedical Sciences
	Kazuhiko Moji	Dean, Graduate School of International Health Development
	Kouichi Morita	Dean, Institute of Tropical Medicine
	Yuji Nagayama	Dean, Atomic Bomb Disease Institute
	Nozomu Mori	Director, University Library
	Toshiaki Inada	Director, Center for Language Studies
	Hiroshi Yamasaki	Director-General, Administration Bureau
	Goro Tanaka	Dean, School of Health Sciences, School of Medicine
	Hirumichi Umebayashi	Director, Research Center for Nuclear Weapons Abolition



Board Members and Faculty/Administrative Staff

Board Members

President	Shigeru Katamine
Trustee (General Affairs and Finance)	Hiroshi Yamasaki
Trustee (Personnel Affairs)	Hirotohi Fukunaga
Trustee (Educational Affairs)	Nobuo Matsusaka
Trustee (Research and Social Contribution)	Susumu Shirabe
Trustee (International Affairs and University Research Institutes)	Shunichi Yamashita
Trustee (Director, University Hospital)	Shigeru Kohno
Auditor	Toshinori Watanabe
Auditor (Part time)	Takamitsu Sato

Vice Presidents

Accreditation	Hirotohi Fukunaga
Educational Affairs	Nobuo Matsusaka
Regional Partnership	Susumu Shirabe
Fukushima Project	Shunichi Yamashita
Global Human Resource Development	Masayuki Susai
Public Relations	Norio Fukao
Information Technology	Yoshihiro Murata
Student Affairs	Ibuki Horiuchi
Admission Affairs	Yoshimasa Hoshino
Research Planning	Atsushi Hagiwara
Industry-University Cooperation · Environment · Facilities	Takahiko Yamashita
Gender Equality	Masako Ito

Headquarters for Planning and Evaluation

Director	Shigeru Katamine
----------	------------------

Center for International Collaborative Research

Director	Shunichi Yamashita
----------	--------------------

Center for Industry, University and Government Cooperation

Director	Takahiko Yamashita
----------	--------------------

Center for Public Relations Strategy

Director	Norio Fukao
----------	-------------

Center for Research Promotion Strategy

Director	Susumu Shirabe
----------	----------------

Liaison Center for International Education

Director	Shunichi Yamashita
Director, Liaison Center for International Education Administration Office	Masazumi Izumikawa

Audit Office

Director	Hiroyuki Yamada
----------	-----------------

Administration Bureau

Director-General, Administration Bureau	Hiroshi Yamasaki
Director, General Affairs Department	Hiroaki Goto
Director, General Planning Division	Toru Onodera
Personnel Division	Masahiro Takagi
Director, Research Promotion and International Affairs Department	Hisashi Norose
Director, Research Planning Division	Naoyuki Eto
Industry-University-Government Cooperation Division	Ryoji Sato
Director, Institute of Tropical Medicine Support Division	Yusuke Ueda
Director, Finance Department	Yoshikazu Maetani
Director, Finance Division	Eiichi Ikejiri
Director, Accounting Division	Shinichi Mitsumoto
Director, Procurement Division	Osamu Takahira
Director, Student Support Department	Keiichi Yamano
Director, Education Support Division	Mina Kawano
Director, Student Support Division	Kiyoshi Tsuge
Director, Admission Division	Shoichi Kiyokawa
Director, Facilities Department	Takashi Yamamoto
Director, Facilities Planning Division	Koji Nakamoto
Director, Facilities Maintenance Division	Eishi Matsushita
Director, Environmental Maintenance Division	Katsuhiro Matsumura
Director, Academic Information Department	Tetsuro Tokunaga
Director, Information Planning Division	Tsunenobu Ueno
Director, Academic Information Management Division	Yoshinori Yokoyama
Director, Academic Information Services Division	Minoru Ogawa

Faculties and Schools

Bunkyo District Affairs

Director, Bunkyo District Affairs	Toru Hashida
Director, Accounting Division	Kazunori Tsuchihashi
Director, Student Affairs Division	Shuzo Nakamura

School of Global Humanities and Social Science

Dean, School of Global Humanities and Social Sciences	Tadashi Sakuma
---	----------------

Faculty of Education

Dean, Faculty of Education	Takashi Fujiki
Principal, Kindergarten	Kazuyuki Harada
Principal, Elementary School	Kazutaka Abe
Principal, Lower Secondary School	Hiroshi Mori
Principal, School for Children with Special Education Needs	Tsukasa Anayama
Director, Center for Education Research and Training	Keisuke Sato

Faculty of Economics	
Dean, Faculty of Economics	Hiomasa Okada
Director, Faculty of Economics Support Division	Shigeru Chigita
School of Medicine	
Dean, School of Medicine	Isao Shimokawa
School of Dentistry	
Dean, School of Dentistry	Koji Nakayama
School of Pharmaceutical Sciences	
Dean, School of Pharmaceutical Sciences	Morio Nakayama
School of Engineering	
Dean, School of Engineering	Takakazu Ishimatsu
Faculty of Environmental Studies	
Dean, Faculty of Environmental Studies	Akihiro Taimura
Faculty of Fisheries	
Dean, Faculty of Fisheries	Osamu Arakawa
Captain, Training Ship "Nagasaki-Maru"	Hisao Kanehara
Captain, Training Ship "Kakuyo-Maru"	Yasuhiro Morii
Graduate Schools	
Dean, Graduate School of Education	Takashi Fujiki
Dean, Graduate School of Economics	Hiomasa Okada
Dean, Graduate School of Engineering	Takakazu Ishimatsu
Dean, Graduate School of Fisheries Science and Environmental Studies	Takashi Hayase
Director, Institute for East China Sea Research	Kiyoshi Soyano
Dean, Graduate School of Science and Technology	Takakazu Ishimatsu
Dean, Graduate School of Biomedical Sciences	Takehiko Koji
Director, Administration Department	Yoshihide Moriyama
Director, General Affairs Division	Ryoji Terahara
Director, Student Affairs Division	Toshiro Hamano
Director, Academic Promotion Division	Hisayuki Fukahori
Director, Dental Sciences Administration Office	Hiroto Kondo
Director, Pharmaceutical Sciences Administration Office	Tadaichi Maeda
Director, Medicinal Plant Garden	Morio Nakayama
Dean, Graduate School of International Health Development	Kazuhiko Moji
University Research Institutes	
Dean, Institute of Tropical Medicine	Kouichi Morita
Director, Center for Infectious Disease Research in Asia and Africa	Kouichi Morita
Director, Tropical Medicine Museum	Noboru Minakawa
Dean, Atomic Bomb Disease Institute	Yuji Nagayama

University Hospital	
Director, University Hospital	Shigeru Kohno
Director, Administration Department	Tokimasa Torii
Director, Management and Planning Division	Masami Kondo
Director, General Affairs Division	Hiroshi Hamamura
Director, Procurement Management Division	Toshihiko Hamamoto
Director, Medical Affairs Division	Tetsuya Yokoyama
Director, Patient Services Office	Yuji Sunayama
Director, Pharmaceutical Department	Hitoshi Sasaki
Director, Nursing Department	Eiko Eto

University Library	
Director, University Library	Nozomu Mori
Director, Medical Library	Hideaki Masuzaki
Director, Economics Library	Takatsugu Akaishi

Center for Health and Community Medicine	
Director, Center for Health and Community Medicine	Susumu Shirabe

Faculty-affiliated Institutes for Education and Research	
Director, Center for Frontier Life Sciences	Susumu Shirabe
Director, Center for Information and Communication Technology	Yoshihiro Murata
Director, Center for Educational Innovation	Nobuo Matsusaka
Director, Advanced Computing Center	Takahiko Yamashita
Director, Center for Language Studies	Toshiaki Inada
Director, Research Center for Nuclear Weapons Abolition	Hirofumi Umebayashi

Student Affairs Information Promotion Office	
Director	Nobuo Matsusaka

Yattemyu Desk	
Director	Ibuki Horiuchi

Center for Gender Equality	
Director	Masako Ito

Medical Innovation Center	
Director	Susumu Shirabe

Center for Regional Educational Partnerships	
Director	Yoshimasa Hoshino

Student Accessibility Office	
Director	Nobuo Matsusaka

Research and Support Center for the Future of Fukushima	
Director	Shunichi Yamashita

Shimabara Joint Training Center for National Universities in Kyushu Area	
Director	Ibuki Horiuchi



Number of Board Members and Faculty/Administrative Staff

2014 . 5 . 1

Board Members, etc. Faculties, etc.	Board Members			Faculty Staff								Sub Total	Admin istrative Staff	Total
	President	Trustees	Auditors	Vice Presidents	Special Aide to the President	Professors	Associate Professors	Senior Assistant Professors	Assistant Professors	Research Associates	School teachers			
Headquarters for Planning and Evaluation														
Center for International Collaborative Research						3			1			4	10	14
Center for Industry, University and Government Cooperation						3	5		4			12	6	18
Center for Public Relations Strategy						1	1					2	3	5
Center for Research Promotion Strategy													3	3
Liaison Center for International Education						1	5					6	14	20
Audit Office													3	3
Administration Bureau	1	6	(1)	1	[12]			1	1			(1 X 12) 10	215	(1 X 12) 225
Bunkyo District Affairs													64	64
School of Global Humanities and Social Sciences						4	17		2			23	9	32
Faculty of Education						34	33		1			68	1	69
Kindergarten												7	7	7
Elementary School												30	30	30
Lower Secondary School												25	25	25
School for Children with Special Education Needs												29	29	29
Center for Education Research and Training						2						2		2
Faculty of Economics						29	26	2	2			59	17	76
Training Ship "Kakuyo-Maru"								2	1			3	12	15
Training Ship "Nagasaki-Maru"						1	2		3			6	17	23
Graduate School of Education						5	4					9		9
Graduate School of Engineering						44	39		32	1		116	43	159
Graduate School of Fisheries Science and Environmental Studies						47	34	1	3			85		85
Institute for East China Sea Research						3	1		1			5		5
Graduate School of Biomedical Sciences						96	76	24	167			363	79	442
Medicinal Plant Garden								1				1		1
Graduate School of International Health Development						3	1		2			6		6
Institute of Tropical Medicine						12	6	3	30	1		52	5	57
Center for Infectious Disease Research in Asia and Africa						3			5			8	1	9
Tropical Medicine Museum						1						1	1	2
Atomic Bomb Disease Institute						7	6	2	17			32	3	35
University Hospital						4	15	54	171			244	1,274	1,518
Center for Health and Community Medicine								3	2			5	11	16
Center for Frontier Life Sciences						2	1		3			6	5	11
Center for Information and Communication Technology						3	2		1			6		6
Center for Educational Innovation						4	1		2			7		7
Advanced Computing Center								1				1		1
Center for Language Studies						7	1	1	7			16		16
Research Center for Nuclear Weapons Abolition						4	1					5		5
Yattemyu Desk													1	1
Center for Gender Equality						1						1	1	2
Center for Regional Educational Partnerships						1			1			2		2
Total	1	6	(1)	1	[12]	325	285	87	459	2	91	(1 X 12) 1,257	1,798	(1 X 12) 3,055

- Auditor (1) is a part-time staff member, and is excluded from the total. Vice Presidents and Special Assistant to the President double as Faculty members or Trustees, and [] indicates the number of them included in count.
- The Faculty Staff of the Faculty of Environmental Studies or the Faculty of Fisheries belongs to the Graduate school of Fisheries Science and Environmental Studies. The Faculty Staff of the School of Medicine, the School of Dentistry or the School of Pharmaceutical Sciences belongs to the Graduate School of Biomedical Sciences.



Education and Research

Faculties and Schools

Faculty	Divisions	Departments	
School of Global Humanities and Social Sciences 1 Department 4 Programs	Department of Global Humanities and Social Sciences	Global Society Program Social Dynamics Program Culture and Communication Program Dutch Studies Program	
Faculty of Education 1 Division 6 Departments	Teacher Education Division	Department of Intercultural Studies Department of Art Expression Department of Education and Psychology Department of Natural Science Department of Life and Health Department of Elementary Education	
Faculty of Economics 1 Department 6 Divisions	General Economics	Economics and Econometrics Regional Economics and Policy Economic Cooperation & International Communication Financial Systems Corporate Behavior & Decision Making Business Management & Accounting	
School of Medicine 2 Departments 7 Divisions	School of Medical Sciences	Structure-Function-Metabolism Therapeutic Medicine	Pathophysiologic Analysis Preventive Medicine
	School of Health Sciences	Nursing Occupational Therapy	Physical Therapy
School of Dentistry 1 Department 3 Divisions	Dentistry	Oral and Maxillofacial Life Sciences Oral and Maxillofacial Environmental Sciences Oral and Maxillofacial Regenerative Medical Sciences	
School of Pharmaceutical Sciences 2 Departments 4 Divisions	Pharmacy	Basic Pharmacy Medical Pharmacy	
	Pharmaceutical Sciences	Basic Pharmaceutical Sciences Applied Pharmaceutical Sciences	
School of Engineering 1 Department 6 Programs	Engineering	Mechanical Engineering Program Electrical and Electronic Engineering Program Computer and Information Science Program Structural Engineering Program Civil and Environmental Engineering Program Chemistry and Materials Engineering Program	
Faculty of Environmental Studies 1 Department 2 Divisions	Environmental Studies	Human and Social Environment Environmental Conservation and Planning	
Faculty of Fisheries 1 Department 4 Divisions	Fisheries	Systematic Fisheries Science Marine Biology and Dynamics Marine Life Science and Biochemistry Marine Material Science	

Graduate Schools

Graduate School	Course	Departments
Graduate School of Education	Master's Course	Department of Teaching Skills Development and Practice
	Professional Degree Program	Department of Teacher Training and Practice
Graduate School of Economics	Master's Course	Policy Studies in Economics and Management
	Doctoral Course	Managerial Decision Making
Graduate School of Engineering	Master's Degree	Department of Advanced Engineering
	Doctoral Degree (3 Year Program)	Department of Science and Technology
	Doctoral Degree (5 Year Program)	Department of Advanced Technology and Science for Sustainable Development
Graduate School of Fisheries Science and Environmental Studies	Master's Program	Department of Fisheries Science Department of Policies for Human-Environmental Symbiosis Department of Environmental Conservation and Planning
	Doctoral Program	Department of Environment and Fisheries Resources
	Doctoral Program (5-Year Doctoral Program)	Department of Marine Science
Graduate School of Science and Technology	Master's Course	Mechanical Systems Engineering Civil and Structural Engineering
	Doctoral Course	Systems Science Marine Science and Technology Environmental Science
Graduate School of Biomedical Sciences	Master's Course	Tropical Medicine Health Sciences
	Doctoral Course	Medical and Dental Sciences Infection Research Life Sciences and Radiation Research
	Master's Course	Pharmaceutical Sciences
	Doctoral Course	Pharmaceutical Sciences
Graduate School of International Health Development	Master's Course	International Health Development

The Graduate School of Education, Master's Course and the Graduate School of Science and Technology stopped accepting applicants.

Academic Calendar

4 April	1 2	First Day of Academic Year Entrance Ceremony	10 October	
5 May	31	University Foundation Day	11 November	22 ~ 23 School Festival
6 June			12 December	12 / 27 ~ 1 / 4 Winter Break
7 July			1 January	
8 August	8 / 11 ~ 9 / 28	Summer Break	2 February	
9 September	29	First Day of Second Semester	3 March	3 / 21 ~ 4 / 3 Spring Break 25 Commencement Ceremony 31 Last Day of Academic Year



University Facilities

University Research Institute: Institute of Tropical Medicine

Research Fields and Departments	Mission Statements
Microbiology and Parasitology Virology, Emerging Infectious Diseases, Bacteriology, Protozoology, Parasitology, Molecular Epidemiology Host and Vector Biology Immunogenetics, Host-Defense Biochemistry, Pathology, Preventive Medicine and AIDS Research Public and Environmental Health Eco-epidemiology, International Health, Global Health Development Policy Sciences, Vector Ecology and Environment Clinical Medicine and Research Clinical Medicine, Pediatric Infectious Diseases, Clinical Product Development	<ol style="list-style-type: none"> 1 . Spear-head research in tropical medicine and international health 2 . Global contribution through disease control and health promotion in the tropics by applying the fruits of the research 3 . Cultivation of researchers and specialists in the above fields

University Research Institute: Atomic Bomb Disease Institute

Research Fields (Departments)	Mission
Social Medicine Health Risk Control Global Health, Medicine and Welfare Radiation Medical Sciences Radiation Life Science Stem Cell Biology Human Genetics Molecular Medicine Atomic Bomb Disease and Hibakusha Medicine Hematology Tumor and Diagnostic Pathology Radioisotope Medicine Division of Scientific Data Registry Biostatistics Section Tissue and Histopathology Section	<ol style="list-style-type: none"> 1 . Radiation health risk analysis and communication. 2 . Basic research for radiation effects. 3 . Diagnosis and clinical management for radiation-induced disorders in atomic bomb survivors.

University Library

Holdings

2014 .4 .1

Libraries	Books			Periodicals		
	Japanese & Chinese	Others	Total	Japanese	Others	Total
Central Library	433,822	137,078	570,900	11,161	3,377	14,538
Medical Library	77,425	72,111	149,536	3,757	3,189	6,946
Economics Library	192,679	83,332	276,011	3,578	1,127	4,705
Total	703,926	292,521	996,447	17,007	7,291	24,298

The identical periodicals are excepted from total amount of 3 libraries.

Use of Library (FY 2013)

Libraries	Visitors, etc.	University Staff	Students	Others	Total
Central Library	Visitors	417,950		11,635	429,585
	Volumes lent	4,285	40,264	1,794	46,343
Medical Library	Visitors	53,905		1,840	55,745
	Volumes lent	1,356	9,083	363	10,802
Economics Library	Visitors	64,001		2,210	66,211
	Volumes lent	1,332	10,215	264	11,811
Total	Visitors	535,856		15,685	551,541
	Volumes lent	6,973	59,562	2,421	68,956

University Hospital (FY 2013)

Number of Patients by Department

Departments, etc.	Patients	Inpatients		Outpatients	
		Total Number of Patients	Daily Average of Patients	Total Number of Patients	Daily Average of Patients
Endocrinology and Metabolism		3,206	8.8	12,861	52.7
Gastroenterology and Hepatology		21,677	59.4	19,223	78.8
Immunology and Rheumatology		7,164	19.6	11,823	48.5
Neurology		4,782	13.1	6,306	25.8
Respiratory Medicine		17,195	47.1	12,787	52.4
Nephrology		4,855	13.3	8,291	34.0
Cardiovascular Medicine		14,147	38.8	16,057	65.8
Hematology		15,660	42.9	10,010	41.0
Infectious Diseases		0	0.0	236	1.0
General Thoracic Surgery		4,757	13.0	2,899	11.9
Digestive Surgery I		11,256	30.8	5,150	21.1
Digestive Surgery II		16,359	44.8	6,932	28.4
Urology		10,452	28.6	18,365	75.3
Cardiovascular Surgery		10,992	30.1	3,715	15.2
Breast and Endocrine Surgery		2,598	7.1	7,403	30.3
Neurosurgery		10,979	30.1	8,175	33.5
Ophthalmology		10,685	29.3	19,033	78.0
Otolaryngology-Head and Neck Surgery		9,329	25.6	14,564	59.7
Dermatology and Allergology		6,798	18.6	17,030	69.8
Plastic and Reconstructive Surgery		5,978	16.4	5,810	23.8

Departments, etc.	Patients	Inpatients		Outpatients	
		Total Number of Patients	Daily Average of Patients	Total Number of Patients	Daily Average of Patients
Orthopedic Surgery		13,927	38.2	14,868	60.9
Pediatrics		14,278	39.1	15,701	64.3
Pediatric Surgery		3,110	8.5	4,015	16.5
Obstetrics and Gynecology		19,908	54.5	16,258	66.6
Neuropsychiatry		12,324	33.8	18,436	75.6
Radiology		4,894	13.4	8,293	34.0
Anesthesiology		51	0.1	9,057	37.1
General Medicine		1,759	4.8	5,098	20.9
International Hibakusha Medical Center		55	0.2	803	3.3
Emergency and Critical Care Centre		12,934	35.4	7,990	32.7
Department of Metabolism / Diabetes and Clinical Nutrition		0	0.0	2,919	12.0
Subtotal		272,109	745.4	310,108	1,270.9

Departments, etc.	Patients	Inpatients		Outpatients	
		Total Number of Patients	Daily Average of Patients	Total Number of Patients	Daily Average of Patients
Department of General Dentistry	Preventive Dentistry	0	0.0	1,213	5.0
	Orthodontics	0	0.0	7,868	32.2
	Pediatric Dentistry	0	0.0	4,006	16.4
	Cariology	0	0.0	12,692	52.0
	Periodontics	0	0.0	15,247	62.5
	Fixed Prosthesis	0	0.0	9,352	38.3
	Denture Prosthesis	0	0.0	11,793	48.3
Department of Oral and Maxillofacial Surgery	Oral and Maxillofacial Surgery	4,300	11.8	10,352	42.4
	Regenerative Oral Surgery	3,669	10.1	8,704	35.7
Department of Radiology and Anesthesiology	Head and Neck Radiology	0	0.0	1,492	6.1
	Anesthesiology and Clinical Physiology	104	0.3	1,517	6.2
Special Care Dentistry		0	0.0	5,356	22.0
Medical Education Development Center		0	0.0	5,446	22.3
Clinic for Oral Health Care and Dysphagia Rehabilitation		0	0.0	9,258	37.9
Center for Oral and Maxillofacial Implants		13	0.0	3,708	15.2
Subtotal		8,086	22.2	108,004	442.5
Total		280,195	767.7	418,112	1,713.6

Number of days hospitalized = 365 days, Number of days open for practice = 245 days

Schools and Kindergarten Affiliated with the Faculty of Education

Affiliated Schools

2014 .5 .1

Schools	Type of Class	Grade		Number of Classes	Admission Capacity	Enrollment Capacity	Enrollment	
Kindergarten	/	3-year-olds	3-year program	1	20	20	24	
		4-year-olds	2-year program	2	40	60	36	
			3-year program		20		24	
		5-year-olds	2-year program	2	40	60	37	
			3-year program		20		24	
		Total				5		140
Elementary School	Ordinary Class		1	3	30	90	90	
			2	3	30	90	90	
			3	3	30	90	89	
			4	3	30	90	83	
			5	3	30	90	85	
			6	3	30	90	88	
	Combined Class		1	1	16	16	16	8
			2				8	
			3				8	
			4				8	
			5				8	
			6				8	
	Total				21		588	573
Lower Secondary School	Ordinary Class		1	4	35	140	144	
			2	4	35	140	142	
			3	4	35	140	142	
	Total				12		420	428
School for Children with Special Education Needs	Ordinary Class (Combined class of successive grades)	Elementary School	1	1	6	18	1	
			2				2	
			3				1	
			4				2	
			5				2	
			6				2	
	Ordinary Class	Lower Secondary School	1	1	6	18	3	
			2	1	6		5	
			3	1	6		6	
	Ordinary Class	Secondary School	1	1	8	24	8	
			2	1	8		8	
			3	1	8		8	
Total				9		60	48	

Faculty-affiliated Institutes for Education and Research

Faculty of Education
Center for Education Research and Training
Faculty of Fisheries
Training Ship Nagasaki-maru
Training Ship Kakuyo-maru
Institute of Tropical Medicine
Center for Infectious Disease Research in Asia and Africa
Tropical Medicine Museum

Graduate School of Fisheries Science and Environmental Studies
Institute for East China Sea Research
Graduate School of Biomedical Sciences
Medicinal Plant Garden

Center for Health and Community Medicine

Staffing as of 2014 . 5 . 1

Director	Professor	Associate Professor	Assistant Professor	Public Health Nurse	Counsellor	Administrative Staff	Total	University doctors, by specialty				
								Internal Medicine	Dermatology	Obstetrics and Gynecology	Ophthalmology	Dentistry
{ 1 }	{ 1 }	3 { 1 }	2 { 1 }	3	6	2	16 { 4 }	4	1	1	1	1

Notes: Consultation days at Bunkyo campus office: Monday through Friday
 Consultation days at Sakamoto campus office: Biweekly Friday.
 Numbers in brackets denote shared staff, and are excluded from the total.

University Institutes for Education and Research

Center for Frontier Life Sciences
Radioisotope Research Center
Biomedical Research Center
Gene Research Center
Center for Information and Communication Technology
Center for Educational Innovation
Advanced Computing Center
Center for Language Studies
Research Center for Nuclear Weapons Abolition

Student Affairs Information Promotion Office
Volunteer activity Support Yattemyu Desk
Center for Gender Equality
Medical Innovation Center
Center for Regional Educational Partnerships
Student Accessibility Office
Research and Support Center for the Future of Fukushima

Stations of Educational Research Projects

Station	Location	Purpose of Establishment
Nagasaki University Africa Research Station Kisumu Research Site	Nairobi, Republic of Kenya Kisumu, Republic of Kenya	Formulation of Educational and Research Strategies, and Support for International Collaborative Research and Educational Activities in Africa.
Kenya Research Station Mbita Research Site Kwale Research Site Busia Research Site	Nairobi, Republic of Kenya (in the Kenya Medical Research Institute(KEMRI)) Mbita, Republic of Kenya Kwale, Republic of Kenya Busia, Republic of Kenya	Promotion of researches on Tropical Diseases and Emerging and Re-emerging Infectious Diseases.
Vietnam Research Station(VRS) Nha Trang Branch	Hanoi City, Socialist Republic of Vietnam (in National Institute of Hygiene and Epidemiology (NIHE)) Nha Trang City, Khanh Hoa Province, Socialist Republic of Vietnam (in the Khanh Hoa Province Health Department)	
Representative Office for Molecular Epidemiological Studies Around Chernobyl	Minsk City, the Republic of Belarus (in Belarusian Medical Academy of Post-Graduate Education)	To promote programs on Global Strategic Center for Radiation Health Risk Control.
Nagasaki University-Kawauchi Village Reconstruction Promotion Base	Kawauchi Village, Fukushima Prefecture (in Kawauchi Village Office)	To promote projects based on the agreement on comprehensive cooperation between Nagasaki University and Kawauchi Village.
Medicine in Goto Islands and Remote Areas Project Station	Goto City, Nagasaki (in Nagasaki Goto Chuoh Hospital)	Promotion of Projects under the Agreement on Establishment of Endowed Course (Unit of Island and Community Medicine)
Innovative Preventive Medicine Education and Research Station	Goto City, Nagasaki (in Fukue General Public Health and Welfare Center)	Promotion of Cohort Studies in Innovative Prevention of Medical Science and Educational Activities.
Research Center for Comprehensive Community Care Education	Nagasaki City, Nagasaki (in Nagasaki Harbor Medical Center City Hospital)	Promotion of Research and Education for Geriatrics and Comprehensive Community Care System.
Hirado Clinical Education Project Station	Hirado City, Nagasaki (in National Health Insurance Hirado Municipal Hospital)	Promotion of Program for Resident Education and Revitalization of Rural Community Hospitals.
Emergency Medical Education Center	Nagasaki City, Nagasaki (in Saiseikai Nagasaki Hospital and Nagasaki Kinen Hospital)	Promotion for Encouraging and Ensnconcing Medical Professionals in Nagasaki.



Distinctive Education and Research

Distinctive Research

Funds for Integrated Promotion of Social System Reform and Research and Development of the Ministry of Education, Culture, Sports, Science and Technology (MEXT)
Program for the Strategic Promotion of International Cooperation to Accelerate Innovation in Developing Countries

FY	Title
FY 2012~FY 2016	Establishment of an innovative biomedical research platform in Africa for a diagnostic technology development of concurrent multiple infectious diseases, a broad and comprehensive surveillance system and an integrated health strategy of the infectious diseases

Funds for the Development of Human Resources in Science and Technology of the Ministry of Education, Culture, Sports, Science and Technology (MEXT)

FY	Program
FY 2011~FY 2017	Improvement of Research Environment for Young Researchers

MEXT Subventions for Regional Industry-Academic-Government Cooperation in the Promotion of Science and Technology

FY	Program
FY 2011~FY 2015	Regional Innovation Strategy Support Program

Japan Society for Promotion of Science Asian CORE Program

FY	Program Title
FY 2010~FY 2014	Asian Aging Core for Longevity: Research and Education Center Initiatives for Aging Controls and Regional Geriatrics

Japan Society for Promotion of Science Core-to-Core program

Asia-Africa Science Platforms

FY	Program Title
FY 2013~FY 2015	A multidisciplinary approach for harmonizing aquatic environment conservation and fisheries innovation in Lake Victoria region Kenya

Distinctive Education

FY : Programs currently receiving subsidies from the Ministry of Education, Culture, Sports, Science and Technology

Re-Inventing Japan Project

Title	Managing Body	FY
Japan-China-Korea intercollegiate cooperative Project to Foster Leading Water Environment Engineers	Graduate School of Engineering	2010~2014

Program for Leading Graduate Schools

Title	Managing Body	FY
Program for Nurturing Global Leaders in Tropical and Emerging Communicable Diseases	Graduate School of Biomedical Sciences, Institute of Tropical Medicine	2012 ~ 2018

Project for promotion of Global Human Resource Development

Title	Managing Body	FY
Type B (Faculty/school-specific)	Faculty of Economics, Graduate School of Economics, Graduate School of International Health Development	2012 ~ 2016

Program for Promoting Inter-University Collaborative Education

Title	Managing Body	FY
Development of the Basic Skills Required for Human Resources to Work Towards the Development of a Global Society by Learning and Working with International Students (Nagasaki University Representative university Nagasaki International University and eight other universities Partner university)	Education Support Division	2012 ~ 2016
Formation of strategic base for the intercollegiate collaborative education focused on community-based inter-professional work about cancer therapy and palliative care (Nagasaki University Representative university University of Nagasaki and one other University Partner university)	School of Pharmaceutical Sciences	2012 ~ 2016

Promotion Plan for the Platform of Human Resource Development for Cancer

Title	Managing Body	FY
Kyushu Promotion Plan for the Platform of Human Resource Development for Cancer (Kyushu University Representative university Nagasaki University and ten other Universities)	Graduate School of Biomedical Sciences	2012 ~ 2016

New Paradigms - Establishing Centers for Fostering Medical Researchers of the Future

Title	Managing Body	FY
(A) Fostering Human Resources for Producing Medical Innovation Medical-Engineering Hybrid Professional Development Program	Graduate School of Biomedical Sciences	2013 ~ 2017
(B) Doctors for Communities (DOCS) - Fostering Research-Minded General Physicians Innovative development of human resources for comprehensive community care (Nagasaki University Representative university Nagasaki Junshin Catholic University Partner university)	School of Medicine	2013 ~ 2017

Support Program for Distinctive University Education

Title	Managing Body	FY
Medical Educational Program in Cooperation with Local Communities	School of Medicine	2004 ~ 2007
Performance and Improvement of the Distinctive First-year Education: Establishing an Education Management Cycle	Entire University	2003 ~ 2006
Program to Foster the Monodukuri (design) Ability among Undergraduate Students in the Education Center for Engineering and Technology (Niigata University Representative university Nagasaki University and one other university Partner university)	School of Engineering	2003 ~ 2006

Support Program for Contemporary Educational Needs

Title	Managing Body	FY
Development of Harmony in the Community through PAT Program	Faculty of Education	2007 ~ 2009
Program to Train Cosmopolitan Students with the Dejima Spirit through NAGASAKI RANGAKU Renaissance	Entire University	2006 ~ 2008
Program to Foster Engineers for the Enhancement of a Sound Society	School of Engineering	2006 ~ 2008

Initiatives for Attractive Education in Graduate Schools

Title	Managing Body	FY
Education Program of Researchers for Restoration of Marine Environment and Resources	Graduate School of Science and Technology	2005 ~ 2006
Program to Foster International Researchers and Doctors Specialized in Infectious Diseases	Graduate School of Biomedical Sciences	2005 ~ 2006

Promotion for Well-Qualified Medical Professional Training Program in Coe

Title	Managing Body	FY
Program for Resident Education and Revitalization of Rural Community Hospitals	University Hospital	2005 ~ 2007
Project to Help Female Doctors on Child-care Leave Get Back to Work as Anesthesiologists	University Hospital	2006 ~ 2008

Promotion for Well-Qualified Teacher Training Program

Title	Managing Body	FY
Program to Foster Highly Competent Teachers Who Can Deal with Various Education Issues in the Present Society	Graduate School of Education	2006 ~ 2007

Human Resource Development Plan for Cancer

Title	Managing Body	FY
Kyushu Cancer Professional Training Plan (Kyushu University <Representative university> Nagasaki University and eleven other universities <Partner university>)	Graduate School of Biomedical Sciences	2007 ~ 2011

Student Support Program Corresponding to New Social Needs

Title	Managing Body	FY
Program to Develop Human Relations by Students Themselves	Entire University	2007 ~ 2010

Program for Enhancing Systematic Education in Graduate Schools

Title	Managing Body	FY
Training of tropical infectious disease specialists by means of international collaborative efforts	Graduate School of Biomedical Sciences	2009 ~ 2011
Professional Training Program for Emerging Financial Market Analysis	Graduate School of Economics	2008 ~ 2010
Master of Public Health with Specialization in International Health	Graduate School of International Health Development	2008 ~ 2010

Program for Promoting High-Quality University Education

Title	Managing Body	FY
Training Platform Construction for Resident Education	School of Medicine	2008 ~ 2010

Strategic University Cooperative Support Program for Improving Graduate

Title	Managing Body	FY
Formation of a strategic base for the integrated education of pharmacy and nursing science specially focused on home-healthcare and welfare (Nagasaki University <Representative university> University of Nagasaki and one other University <Partner university>)	School of Pharmaceutical Sciences	2009 ~ 2011

Development of Prominent Medical Specialists by Mutual Cooperation between Hospitals

Title	Managing Body	FY
Senior Residency Programs for Medical Doctors in Nagasaki and Saga prefectures (Nagasaki University <Representative university> Saga University and seven other universities <Partner university>)	University Hospital	2008 ~ 2012
Training program of Medical Specialists (Toyama University <Representative university> Nagasaki University and twenty-one other universities <Partner university>)	University Hospital	2008 ~ 2012
(University of the Ryukyus <Representative university> Nagasaki University and twenty-seven other universities <Partner university>)	University Hospital	2008 ~ 2012



Number of Students, etc.

Number of Students

2014 . 5 . 1

Faculties and Schools

(the number of person)

Faculties, etc.	Departments · Divisions		Admission Capacity (freshmen only)	Transfer Student Capacity	Enrollment Capacity (all students from freshmen to seniors)	Enrollment						Total
						1 st year	2 nd year	3 rd year	4 th year	5 th year	6 th year	
School of Global Humanities and Social Sciences	Department of Global Humanities and Social Sciences		100	-	100	99	-	-	-	-	-	99
Faculty of Education	Teacher Education Division		240	-	960	243	241	238	272	-	-	994
Faculty of Economics	General Economics	Day Course	265	-	1,330	274	365	377	481	-	-	1,497
		Evening- centered Course	60	-	240	60	61	58	104	-	-	283
			-	15	30	-	-	-	-	-	-	-
	Sub Total		325	15	1,600	334	426	435	585	-	-	1,780
School of Medicine	School of Medical Sciences		116	5	704	126	141	115	131	104	102	719
	School of Health Sciences		106	14	452	108	107	126	118	-	-	459
	Sub Total		222	19	1,156	234	248	241	249	104	102	1,178
School of Dentistry	Dentistry		50	-	300	50	56	54	47	55	38	300
School of Pharmaceutical Sciences	Pharmacy		40	-	240	42	40	40	41	40	45	248
	Pharmaceutical Sciences		40	-	160	43	40	41	56	-	-	180
	Sub Total		80	-	400	85	80	81	97	40	45	428
School of Engineering	School of Engineering		380	-	1,520	397	409	397	399	-	-	1,602
	Mechanical Systems Engineering		-	-	-	-	-	-	31	-	-	31
	Electrical and Electronic Engineering		-	-	-	-	-	-	33	-	-	33
	Computer and Information Sciences		-	-	-	-	-	-	21	-	-	21
	Structural Engineering		-	-	-	-	-	-	7	-	-	7
	Civil Engineering		-	-	-	-	-	-	29	-	-	29
	Materials Science and Engineering		-	-	-	-	-	-	28	-	-	28
	Applied Chemistry		-	-	-	-	-	-	8	-	-	8
	Subjects Required for All Departments		-	-	-	-	-	-	-	-	-	-
Sub Total		380	-	1,520	397	409	397	556	-	-	1,759	
Faculty of Environmental Studies	Environmental Studies		130	10	570	130	139	146	174	-	-	589
Faculty of Fisheries	Fisheries		110	-	440	115	113	115	153	-	-	496
Total			1,637	44	7,046	1,687	1,712	1,707	2,133	199	185	7,623

Graduate Schools

(the number of person)

Admission Capacity· Enrollment	Master's Course						Doctoral Course						
	Admission Capacity	Enrollment Capacity	1 st year	2 nd year	3 rd year	Total	Admission Capacity	Enrollment Capacity	1 st year	2 nd year	3 rd year	4 th year	Total
Graduate Schools													
Graduate School of Education	-	18	-	16	-	16	-	-	-	-	-	-	-
Graduate School of Economics	15	30	14	18	-	32	3	9	4	3	7	-	14
Graduate School of Engineering	200	400	227	207	-	434	15	50	18	13	20	4	55
Graduate School of Fisheries Science and Environmental Studies	60	120	57	60	-	117	17	56	13	17	26	2	58
Graduate School of Science and Technology	-	-	-	2	-	2	-	-	-	-	29	-	29
Graduate School of Biomedical Sciences	68	124	70	58	-	128	100	390	128	106	115	226	575
Graduate School of International Health Development	10	20	11	12	-	23	-	-	-	-	-	-	-
Total	353	712	379	373	-	752	135	505	163	139	197	232	731

Admission Capacity· Enrollment	Professional Degree Program					
	Admission Capacity	Enrollment Capacity	1 st year	2 nd year	3 rd year	Total
Graduate School						
Graduate School of Education	38	58	28	14	3	45
Total	38	58	28	14	3	45

Research Students, Special Register Students, etc.

(the number of person)

Faculties, etc.	Students			
	Research Students	Special Register Students	Special Audit Students	Special Research Students
Faculty of Education· Graduate School of Education	1	11	42	3
Faculty of Economics· Graduate School of Economics	4		26	2
School of Medicine		1	1	
School of Dentistry				
School of Pharmaceutical Sciences	1	7	4	
School of Engineering	3		2	
Faculty of Environmental Studies	7		4	
Faculty of Fisheries	1		11	
Graduate School of International Health Development				
Graduate School of Engineering	2		1	5
Graduate School of Biomedical Sciences	5	2		3
Graduate School of Fisheries Science and Environmental Studies				4
Center for Educational Innovation				
Liaison Center for International Education			20	
Total	24	21	111	17

In addition to students shown in table, 26 others from affiliated universities in Nagasaki Prefecture take Nagasaki University courses for transferable credits.

FY 2014 New Students

Faculties and Schools

2014 . 5 . 1 (the number of person)

Admission Capacity, etc.		Admission Capacity		Applicants		Entrants	
Faculties and Schools		Admission Capacity		Applicants		Entrants	
School of Global Humanities and Social Sciences		100		360	1	98	1
Faculty of Education		240		697	2	243	
Faculty of Economics	Day Course	265		644	13	265	9
	Evening-centered Course	60		107		60	
School of Medicine		222		868	1	222	
School of Dentistry		50		316	4	50	
School of Pharmaceutical Sciences		80		580	1	85	
School of Engineering		380		1,316	28	390	7
Faculty of Environmental Studies		122	8	402	15	124	6
Faculty of Fisheries		110		646	4	114	1
Total		1,629	8	5,936	69	1,651	24

indicates international students, and is excluded from the total.

Geographical Distribution of Entrants' Secondary Schools

2014 . 5 . 1 (the number of person)

Faculties and Schools	Areas, etc.								Total
	Nagasaki	Kyushu (Except Nagasaki)	Chugoku Shikoku	Kinki	Chubu	Kanto	Tohoku Hokkaido	Returnee Students High School Equivalency Examination, etc.	
School of Global Humanities and Social Sciences	20	53	9	5	7	3	1	0	98
Faculty of Education	124	98	13	2	2	4	0	0	243
Faculty of Economics	123	181	6	7	3	1	3	1	325
School of Medicine	83	99	14	9	1	13	1	2	222
School of Dentistry	5	20	6	6	6	5	1	1	50
School of Pharmaceutical Sciences	27	44	5	2	2	4	1	0	85
School of Engineering	146	203	18	11	6	4	2	0	390
Faculty of Environmental Studies	51	61	5	3	1	1	1	1	124
Faculty of Fisheries	27	33	15	21	8	4	6	0	114
Total	606	792	91	66	36	39	16	5	1,651

Graduate Schools

2014 . 5 . 1 (the number of person)

Admission Capacity, etc.		Admission Capacity		Applicants		Entrants	
Graduate Schools		Admission Capacity		Applicants		Entrants	
Graduate School of Education	Professional Degree Program	38		29	6	26	2
	Master's Course	15		10	15	5	9
Graduate School of Economics	Doctoral Course	3		4	1	4	
	Master's Course	200		251	23	213	14
Graduate School of Engineering	Doctoral Course	10		5	8	5	8
	Doctoral Course (5-Year Program)	5		3		2	
Graduate School of Fisheries Science and Environmental Studies	Master's Program	60		79	8	49	5
	Doctoral Program	12		9	1	9	1
	Doctoral Program (5-Year Doctoral Program)	5		3	1	1	1
Graduate School of Biomedical Sciences	Master's Course	32		28	1	19	1
	Doctoral Course	90		94	18	85	16
	Master's Course	36		36		34	
	Doctoral Course	10		11	1	10	1
Graduate School of International Health Development	Master's Course	10		18		10	
Total		526		529	67	472	58

indicates international students, and is excluded from the total.

FY 2013 Graduates and Their Paths after Graduation

2014 . 3 . 31

Undergraduate Students (the number of person)

Faculties and Schools		2013	Total
Faculty of Education		248	17,147
Faculty of Economics	Day Course	368	15,627
	Evening-centered Course	57	607
School of Medicine		207	7,081
School of Dentistry		53	1,769
School of Pharmaceutical Sciences		73	4,276
School of Engineering		371	14,353
Faculty of Environmental Studies		136	1,887
Faculty of Fisheries		93	5,648
Total		1,606	68,395

Graduate Students (the number of person)

Graduate Schools		2013	Total
Graduate School of Education		39	668
Graduate School of Economics		11	233
Graduate School of Engineering		224	421
Graduate School of Fisheries Science and Environmental Studies		51	104
Graduate School of Science and Technology		11	2,865
Graduate School of Biomedical Sciences		164	1,454
Graduate School of International Health Development		9	50
Graduate School of Medical Sciences			1,294
Graduate School of Dentistry			149
Graduate School of Pharmaceutical Sciences			924
Graduate School of Engineering			1,758
Graduate School of Environmental Studies			46
Graduate School of Fisheries			616
Graduate School of Marine Science and Engineering			245
Total		509	10,827

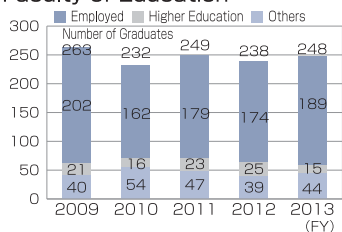
Paths after Graduation

(the number of person)

Faculties, etc. Line of Business		Education	Economics	School of Health Sciences School of Medicine	Pharmaceutical Sciences	Engineering	Environmental Studies	Fisheries	Total
		Number of Graduates	248	368	109	73	371	136	93
Employed	Job seekers	225	323	101	36	129	95	42	951
	Employed	189	308	100	32	121	87	39	876
	Employment Rate	84.0	95.4	99.0	88.9	93.8	91.6	92.9	92.1
	Agriculture, forestry, and fishing							4	4
	Mining, Stone Crushing, and Gravel Extraction					1			1
	Construction	1	9			19	2		31
	Manufacturing	2	36		1	33	9	9	90
	Electricity, Gas, Heat Supply, and Water						1	1	2
	Information and Communications, Transportation, and Postal Services	1	29			20	11	2	63
	Wholesale-Retail Business	11	47		11	7	17	10	103
	Banking-Insurance	9	101				5	2	117
	Real Estate and Leasing	1	5			2	3		11
	Academic Research and Expert and Technical Services	1	11			6	2	3	23
	Hotel and Restaurant Businesses	1	3				2		6
	Life-Related Services and Entertainment	3	8						11
	Education and Study Support Services	125	7			3	5	3	143
	Medicine and Welfare	17	5	97	19		4		142
	Compound Services	1	4			1	2	1	9
	Other Services	2	12	1		7	10		32
	Public Services	14	31	2	1	22	14	3	87
Non-Classifiable Services							1	1	
Higher Education	15	3	7	36	230	30	43	364	
Others	44	57	2	5	20	19	11	158	

Change in After-graduation Paths for the Past Five Years

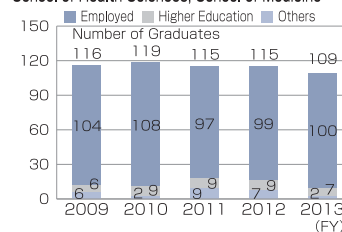
Faculty of Education



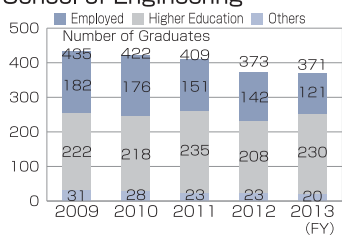
Faculty of Economics



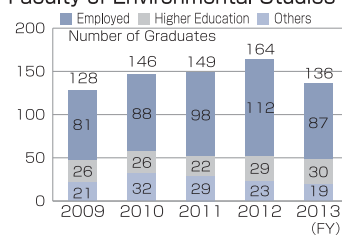
School of Health Sciences, School of Medicine



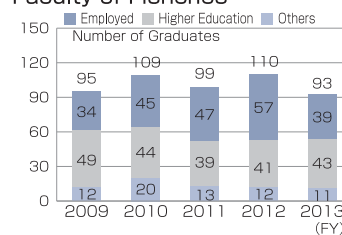
School of Engineering



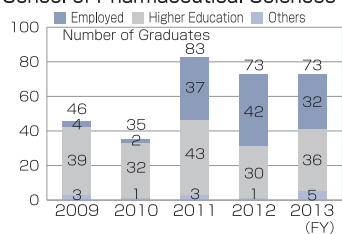
Faculty of Environmental Studies



Faculty of Fisheries



School of Pharmaceutical Sciences



Number of Degrees Conferred

2014 . 3 . 31

(the number of person)

Doctorate	Completion of both coursework and dissertation		Completion of dissertation only		Number of Degrees Conferred under the Former System
	2013	Total	2013	Total	
Philosophy	6	186	2	26	
Business Administration	1	14			
Medical Science	67	1,786	1	1,821	1,347
Dental Science	13	241		96	
Pharmaceutical Science	9	156		37	
Clinical Pharmacy		13			
Engineering	5	293	1	50	
Fisheries Science		66	1	16	
Environmental Science	3	21		3	
Total	104	2,776	5	2,049	1,347

Master's	2013	Total
Philosophy	1	2
Science		48
Education	19	568
Economics	3	123
Business Administration	7	96
Tropical Medicine	8	82
Nursing	12	43
Physical Therapy	7	51
Occupational Therapy	1	23
Pharmaceutical Science	47	1,211
Clinical Pharmacy		209
Engineering	223	4,162
Fisheries Science	32	1,022
Environmental Studies		228
Environmental Science	16	34
Public Health	9	50
Total	385	7,952

(the number of person)

Master's	2013	Total
Master of Education (Professional)	20	100



International Exchange

FY 2014 International Students

Details by Faculty

2014 . 5 . 1 (number of students)

Students Faculties, etc	Students				Students Faculties, etc	Students			
	Undergraduates	Graduates	Research Students, etc	Total		Undergraduates	Graduates	Research Students, etc	Total
School of Global Humanities and Social Sciences	1			1	Faculty of Fisheries	4		10	14
Faculty of Education			45 (3)	45 (3)	Graduate School of Education		6	4 (1)	10 (1)
Faculty of Economics	43 (2)		30	73 (2)	Graduate School of Economics		18 (1)	2	20 (1)
School of Medicine			1	1	Graduate School of Engineering		45 (3)	8	53 (3)
School of Dentistry					Graduate School of Fisheries Sciences and Environmental Studies		36 (2)	4	40 (2)
School of Pharmaceutical Sciences			4	4	Graduate School of Science and Technology		3		3
School of Engineering	33		3	36	Graduate School of Biomedical Sciences		83 (35)	1	84 (35)
Faculty of Environmental Studies	27		10	37	Liaison Center for International Education			23 (3)	23 (3)
Total						108 (2)	191 (41)	145 (7)	444 (50)

Number in () indicates government-sponsored international students, and is included in the total.

Details by Country, etc.

(number of students)

Students Countries, etc	Students				Students Countries, etc	Students			
	Undergraduates	Graduates	Research Students, etc	Total		Undergraduates	Graduates	Research Students, etc	Total
People's Democratic Republic of Algeria		1		1	Republic of Kazakhstan		2		2
People's Republic of Bangladesh		9 (2)		9 (2)	Republic of Kenya		11 (6)	2	13 (6)
Republic of Belarus		1 (1)		1 (1)	Republic of Korea	19	16 (2)	31	66 (2)
Belize		1 (1)		1 (1)	Republic of Kosovo		2 (2)		2 (2)
Republic of Botswana		1		1	Malaysia	3			3
People's Republic of China	83 (2)	89 (3)	76 (1)	248 (6)	Mongolia		1		1
Democratic Republic of the Congo		1 (1)		1 (1)	Republic of the Union of Myanmar		4 (2)	1	5 (2)
Republic of Croatia			1 (1)	1 (1)	Federal Democratic Republic of Nepal		1 (1)		1 (1)
Arab Republic of Egypt		9 (6)		9 (6)	Kingdom of the Netherlands			12 (2)	12 (2)
Republic of El Salvador		1 (1)		1 (1)	Federal Republic of Nigeria		3 (1)		3 (1)
Federal Democratic Republic of Ethiopia		2	1 (1)	3 (1)	Republic of the Philippines		2 (1)	2 (1)	4 (2)
Federal Republic of Germany			1	1	The Republic of the Sudan		4 (2)		4 (2)
Republic of Ghana		3 (1)		3 (1)	Taiwan		3	14	17
Republic of Guatemala		1 (1)		1 (1)	Kingdom of Thailand	1	4	2	7
Republic of Honduras		1 (1)		1 (1)	Republic of Turkey		1 (1)		1 (1)
Republic of Indonesia		5 (2)		5 (2)	Republic of Uganda		1 (1)		1 (1)
Islamic Republic of Iran			1 (1)	1 (1)	Socialist Republic of Viet Nam	2	10 (1)	1	13 (1)
Republic of Italy		1 (1)		1 (1)	Total	108 (2)	191 (41)	145 (7)	444 (50)

Number in () indicates government-sponsored international students, and is included in the total.

Countries, etc. are listed in alphabetical order.

Agreements on Academic Exchange with Overseas Institutions

2014 . 5 . 1

	Countries, etc.	Overseas Institutions	Managing Body	Date Signed	Date Renewed
1	People's Republic of China	Fujian Center for Disease Control and Prevention	Graduate School of Biomedical Sciences	August 23, 1989	October 1, 2013
2		Fudan University	Graduate School of Biomedical Sciences	October 4, 1989	November 30, 2009
3		Fuzhou University	Graduate School of Engineering	March 4, 1992	September 21, 2009
4		Ocean University of China	Graduate School of Fisheries Science and Environmental Studies	January 20, 1997	March 9, 2014
5		China Pharmaceutical University	Graduate School of Biomedical Sciences	October 30, 1998	October 29, 2013
6		Fujian Medical University	Graduate School of Biomedical Sciences	August 6, 2001	July 23, 2012
7		Tongji University	Graduate School of Engineering	November 12, 2001	September 28, 2009
8		Dalian Ocean University	Graduate School of Fisheries Science and Environmental Studies	January 17, 2003	January 17, 2013
9		The Fourth Military Medical University	Graduate School of Biomedical Sciences	March 26, 2003	March 26, 2013
10		Hong Kong Baptist University, School of Chinese Medicine	(School of Pharmaceutical Sciences)	July 9, 2004	July 9, 2009
11		Beijing Normal University	Faculty of Education	December 27, 2004	December 27, 2009
12		Beijing Institute of Education	Faculty of Education	December 28, 2004	May 15, 2009
13		Xinjiang Medical University	Graduate School of Biomedical Sciences	September 26, 2005	September 26, 2010
14		Shanghai University of Finance and Economics	Faculty of Economics	December 27, 2013	
15		Central South University	Graduate School of Biomedical Sciences	April 18, 2006	April 18, 2011
16		Northeast Normal University	Faculty of Education	March 22, 2007	March 22, 2012
17		Shanghai Ocean University	Graduate School of Fisheries Science and Environmental Studies	May 18, 2007	May 18, 2012
18		Shanghai Normal University	Faculty of Education	June 27, 2007	June 27, 2012
19		East China Normal University	Faculty of Education	July 2, 2007	July 2, 2012
20		Jimei University	Graduate School of Fisheries Science and Environmental Studies	August 9, 2007	August 9, 2012
21		Tianjin University of Science & Technology	Graduate School of Engineering	December 10, 2007	December 10, 2012
22		Jilin University	Graduate School of Fisheries Science and Environmental Studies	January 8, 2008	January 8, 2013
23		China Medical University	Institute of Tropical Medicine	September 21, 2010	
24		Peking Union Medical College	Institute of Tropical Medicine	September 20, 2010	
25		Jiangsu Institute of Parasitic Diseases	Institute of Tropical Medicine	September 20, 2010	
26		Shandong University	Graduate School of Engineering	November 1, 2010	
27		Shandong University of Science and Technology	Graduate School of Engineering	November 1, 2010	
28		Zhejiang Ocean University	Graduate School of Fisheries Science and Environmental Studies	July 28, 2011	

() indicates inter-faculty agreements.

	Countries, etc.	Overseas Institutions	Managing Body	Date Signed	Date Renewed
29	People's Republic of China	South-Western University of Finance and Economics	Faculty of Economics	March 1, 2012	
30		Guangzhou Medical University	Graduate School of Biomedical Sciences	March 11, 2013	
31		Yangzhou University	Graduate School of Fisheries Science and Environmental Studies	February 24, 2014	
32	Taiwan	National Yang-Ming University	Graduate School of Biomedical Sciences	June 21, 2002	September 29, 2012
33		Tamkang University	Faculty of Environmental Studies	November 8, 2004	November 8, 2009
34		National Kaohsiung Marine University	Faculty of Fisheries	April 19, 2005	April 19, 2010
35		National Taiwan Ocean University	Graduate School of Fisheries Science and Environmental Studies	August 9, 2005	August 9, 2010
36		Kaohsiung Medical University	Graduate School of Biomedical Sciences	August 1, 2006	August 1, 2011
37		National Chengchi University	Faculty of Environmental Studies	August 4, 2009	
38		National Taiwan University	Faculty of Environmental Studies	November 5, 2010	
39		National Taiwan Normal University	Graduate School of Fisheries Science and Environmental Studies	February 13, 2012	
40		Fisheries Research Institute Council of Agriculture	Graduate School of Fisheries Science and Environmental Studies	June 8, 2012	
41		Taipei Medical University	Graduate School of Biomedical Sciences	December 2, 2013	
42		Republic of Korea	Jeju National University	Graduate School of Engineering	January 26, 1988
43	Pukyong National University		Faculty of Fisheries	January 13, 1988	September 30, 2009
44	Kangwon National University		Graduate School of Engineering	April 4, 2002	April 2, 2012
45	Jinju Health College		Graduate School of Biomedical Sciences	September 11, 2002	December 28, 2012
46	Changwon National University		Faculty of Education	October 24, 2002	September 25, 2012
47	Chonnam National University		Graduate School of Fisheries Science and Environmental Studies	December 20, 2002	August 17, 2011
48	Inha University		Graduate School of Fisheries Science and Environmental Studies	July 4, 2003	September 16, 2013
49	Hanyang University		Faculty of Education	October 10, 2003	October 10, 2011
50	Yonsei University		Faculty of Education	November 18, 2003	November 18, 2011
51	Korea Institute of Ocean Science & Technology		Graduate School of Fisheries Science and Environmental Studies	February 11, 2004	February 11, 2014
52	Kyungpook National University		Faculty of Education	September 30, 2004	September 30, 2009
53	National Fisheries Research and Development Institute		Faculty of Fisheries	March 7, 2005	March 7, 2010
54	Ewha Womans University		Liaison Center for International Education	February 22, 2006	February 22, 2011
55	Sungkyunkwan University		Liaison Center for International Education	March 28, 2006	March 28, 2011
56	Kyung Hee University		Liaison Center for International Education	August 21, 2006	August 21, 2011
57	Hallym University		Graduate School of Biomedical Sciences	May 23, 2007	May 23, 2012
58	Seoul National University	Graduate School of Biomedical Sciences	July 16, 2007	July 16, 2012	

() indicates inter-faculty agreements.

	Countries, etc.	Overseas Institutions	Managing Body	Date Signed	Date Renewed
59	Republic of Korea	Pusan National University	Graduate School of Biomedical Sciences	September 13, 2007	September 13, 2012
60		Yeungnam University	Graduate School of Engineering	February 28, 2008	February 28, 2013
61		Silla University	Faculty of Education	June 17, 2008	June 17, 2013
62		Korea National University of Education	Faculty of Education	October 25, 2010	
63		Chonbuk National University	Graduate School of Engineering	November 1, 2010	
64		Chung-Ang University	Faculty of Economics	March 1, 2012	
65		Hanshin University	Research Center for Nuclear Weapons Abolition	June 20, 2013	
66		Gyeongsang National University	School of Medicine	November 1, 2013	
67		Catholic University of Pusan	Graduate School of Biomedical Sciences	April 1, 2014	
68	Mongolia	Health Sciences University of Mongolia	Graduate School of Biomedical Sciences	June 25, 2008	June 25, 2013
69	Kingdom of Thailand	Chiang Mai University	Institute of Tropical Medicine · Faculty of Economics	September 5, 1990	April 1, 2011
70		Chulalongkorn University	Graduate School of Biomedical Sciences	March 26, 1999	April 5, 2009
71		Mahidol University	Institute of Tropical Medicine	November 1, 1999	June 14, 2010
72		Thammasat University	Institute of Tropical Medicine	March 13, 2006	March 13, 2011
73		Department of Medical Sciences, Ministry of Public Health	Graduate School of Biomedical Sciences	March 25, 2006	March 25, 2011
74	Republic of Indonesia	Sam Ratulangi University	Faculty of Fisheries	April 19, 1993	June 29, 2010
75		Airlangga University	Institute of Tropical Medicine	January 20, 2004	January 20, 2014
76		University of Brawijaya	Graduate School of Fisheries Science and Environmental Studies	September 9, 2008	September 9, 2013
77		Borneo University Tarakan	Faculty of Fisheries	July 8, 2010	
78	Republic of Singapore	National University of Singapore	Graduate School of Biomedical Sciences	June 15, 1987	April 16, 2010
79	Malaysia	Universiti Sains Malaysia	Faculty of Fisheries	May 15, 1995	September 30, 2009
80	Republic of the Philippines	University of the Philippines Diliman	Institute of Tropical Medicine	April 10, 2001	April 10, 2010
81		St. Luke's Medical Center	Institute of Tropical Medicine	February 17, 2004	February 17, 2014
82		San Lazaro Hospital Medical Center	Institute of Tropical Medicine	August 20, 2004	August 20, 2009
83		University of the East	Graduate School of Biomedical Sciences	January 26, 2005	January 26, 2010
84		University of the Philippines Visayas	Graduate School of Biomedical Sciences	March 17, 2010	
85		University of the Philippines Manila	Institute of Tropical Medicine	January 20, 2014	
86	Socialist Republic of Viet Nam	National Institute of Hygiene and Epidemiology	Institute of Tropical Medicine	June 25, 2001	October 12, 2011
87		Can Tho University	Graduate School of Fisheries Science and Environmental Studies	February 23, 2012	
88		National Institute of Malariaology, Parasitology and Entomology	Institute of Tropical Medicine	November 11, 2013	

() indicates inter-faculty agreements.

	Countries, etc.	Overseas Institutions	Managing Body	Date Signed	Date Renewed
89	Republic of the Union of Myanmar	Department of Medical Science, Department of Medical Research, Ministry of Health (Myanmar)	Graduate School of Biomedical Sciences	February 20, 2007	February 20, 2012
90	People's Republic of Bangladesh	Bangladesh Rural Advancement Committee University	Graduate School of International Health Development	May 30, 2008	May 30, 2013
91	India	Defence Research and Development Establishment	Institute of Tropical Medicine	January 28, 2010	
92	Australia	Edith Cowan University	Center for Language Studies	November 19, 2012	
93		University of the Sunshine Coast	School of Global Humanities and Social Sciences	March 10, 2014	
94	United States of America	University of South Carolina	Graduate School of Fisheries Science and Environmental Studies	January 21, 1992	May 28, 2012
95		Michigan State University	Graduate School of Biomedical Sciences	March 6, 2002	March 5, 2013
96		University of Arizona	School of Global Humanities and Social Sciences	August 27, 2002	May 12, 2008
97		University of Hawai'i at Manoa	Graduate School of Fisheries Science and Environmental Studies	June 14, 2007	October 15, 2012
98	United States of America	Minnesota State University, Mankato	Center for Language Studies	November 14, 2011	
99		California State University San Bernardino	Faculty of Economics	June 13, 2012	
100		The University of Montana	Center for Language Studies	May 2, 2013	
101	Federative Republic of Brazil	The Pontifical Catholic University of Rio Grande do Sul	Graduate School of Biomedical Sciences	March 10, 2006	March 10, 2011
102		Instituto Materno Infantil Professor Fernando Figueira	Graduate School of Biomedical Sciences	July 20, 2007	
103	Republic of Italy	Politecnico di Torino	Graduate School of Engineering	August 1, 1997	May 30, 2012
104		University of Naples Federico II	Graduate School of Engineering	May 4, 1998	May 4, 2013
105		University of Bari	Graduate School of Engineering	July 10, 2008	August 6, 2013
106	United Kingdom of Great Britain and Northern Ireland	The University of Liverpool	Graduate School of Biomedical Sciences	March 6, 2006	March 6, 2011
107		London School of Hygiene & Tropical Medicine	Graduate School of International Health Development	April 9, 2013	
108	Federal Republic of Germany	Julius-Maximilians-Universität Würzburg	Graduate School of Biomedical Sciences	September 26, 1996	September 27, 2011
109		The Johannes Gutenberg University Mainz	Graduate School of Biomedical Sciences	June 21, 2010	
110	Portuguese Republic	The University of Porto	Graduate School of Biomedical Sciences	November 23, 2010	
111	Kingdom of the Netherlands	Leiden University	Graduate School of Biomedical Sciences · School of Global Humanities and Social Sciences	September 2, 1998	November 8, 2013
112	Kingdom of Belgium	Institute of Tropical Medicine	Graduate School of International Health Development	January 29, 2013	
113	French Republic	École Nationale Supérieure de Chimie de Mulhouse Université de Haute-Alsace	Graduate School of Biomedical Sciences	September 9, 2005	September 9, 2010
114		Guimet Museum	(University Library)	July 18, 2012	
115		European Business School Paris	Faculty of Economics	July 1, 2013	
116		University of Angers	Graduate School of Biomedical Sciences	July 9, 2013	
117	Spain	Universidad Pontificia Comillas	Graduate School of Engineering	July 25, 2013	
118	Republic of Bulgaria	Medical University of Plovdiv	Graduate School of Biomedical Sciences	July 29, 2013	

() indicates inter-faculty agreements.

	Countries, etc.	Overseas Institutions	Managing Body	Date Signed	Date Renewed
119	Kingdom of Norway	Norwegian University of Science and Technology	Faculty of Fisheries	January 18, 2006	January 18, 2011
120	Republic of Belarus	Belarusian State Medical University	Graduate School of Biomedical Sciences	May 29, 1996	July 25, 2011
121		Gomel State Medical University	Graduate School of Biomedical Sciences	January 31, 2002	January 31, 2012
122		Belarusian Medical Academy of Post-Graduate Education	Graduate School of Biomedical Sciences	July 11, 2008	July 11, 2013
123	Republic of Kazakhstan	Semey State Medical University	Graduate School of Biomedical Sciences	March 4, 1998	February 1, 2013
124		Scientific Research Institute of Radiation Medicine and Ecology	Atomic Bomb Disease Institute	December 18, 2002	February 1, 2013
125		Kazakh National Medical University	Graduate School of Biomedical Sciences	August 26, 2009	
126		Kazakhstan-Russian Medical University	Graduate school of Biomedical Sciences	June 7, 2011	
127		Syzganovs' National Scientific Center of Surgery	Graduate School of Biomedical Sciences	August 1, 2012	
128	Ukraine	State Institution* V.P. Komisarenko Institute of Endocrinology and Metabolism of National Academy of Medical Sciences of Ukraine*	Atomic Bomb Disease Institute	February 21, 2003	February 1, 2013
129		National Research Centre for Radiation Medicine, National Academy of Medical Sciences of Ukraine	Atomic Bomb Disease Institute	February 21, 2003	February 1, 2013
130		Ukrainian Radiation Protection Institute	Atomic Bomb Disease Institute	November 16, 2012	
131	Russian Federation	Federal State Institution* Medical Radiological Research Center* of the Ministry of Health and Social Development of the Russian Federation	Graduate School of Biomedical Sciences	July 5, 2002	November 1, 2012
132		North-Western State Medical University named after I.I. Mechnikov	Graduate School of Biomedical Sciences	June 30, 2013	
133	Republic of Kenya	Kenyatta University	Graduate School of Biomedical Sciences	March 29, 2004	March 29, 2014
134		Kenya Medical Research Institute	Institute of Tropical Medicine	November 12, 2004	October 20, 2009
135		University of Nairobi	Graduate School of Biomedical Sciences	April 27, 2010	
136		Kenya Marine and Fisheries Research Institute	Graduate School of Fisheries Science and Environmental Studies	August 29, 2011	
137		Moi University	Graduate School of Engineering	October 10, 2012	
138		Maseno University	Center for International Collaborative Research	June 21, 2013	
139	Republic of South Africa	National Institute for Communicable Diseases of the National Health Laboratory Service	Institute of Tropical Medicine	July 8, 2010	
140	United Republic of Tanzania	Muhimbili University of Health and Allied Sciences	Graduate School of Biomedical Sciences	December 23, 2011	
141	Hashemite Kingdom of Jordan	The University of Jordan	Graduate School of Biomedical Sciences	March 12, 2003	August 12, 2013
142	Republic of Turkey	Karadeniz Technical University	Faculty of Fisheries	May 20, 2004	May 20, 2009
143		Gazi University	Graduate School of Engineering	July 25, 2013	

() indicates inter-faculty agreements.

Faculty Staff Visited Overseas Institutions and International Researchers Visited NU in FY 2013

Countries & Regions		Faculty Members	Overseas Researchers	Countries & Regions		Faculty Members	Overseas Researchers		
Asia	People's Republic of China	97	13	Europe	EU Countries	United Kingdom of Great Britain and Northern Ireland	57	8	
	Taiwan	40	2			French Republic	22	1	
	Republic of Korea	136	5			Federal Republic of Germany	30	2	
	ASEAN Countries	Republic of the Philippines	20			5	Kingdom of the Netherlands	27	0
		Malaysia	8			1	Others	103	4
		Kingdom of Thailand	56			9	Kingdom of Norway	3	0
		Republic of Indonesia	18		3	Swiss Confederation	11	0	
		Socialist Republic of Viet Nam	62		29	Others	4	0	
		Republic of Singapore	21		0	Russia & Newly Independent States	Russian Federation	8	1
		Republic of the Union of Myanmar	26		1		Republic of Belarus	10	2
		Others	22		0		Republic of Kazakhstan	16	3
	Others	61	1		Others		9	2	
	Americas	United States of America	188		7	Africa	Republic of Kenya	63	11
		Canada	20		2		Others	35	4
Federative Republic of Brazil		3	0	Oceania	Australia	15	0		
Others		7	2		Total	1,209	120		
Middle East	Republic of Turkey	10	0						
	Others	1	2						



Social Contribution

Center for Industry, University and Government Cooperation

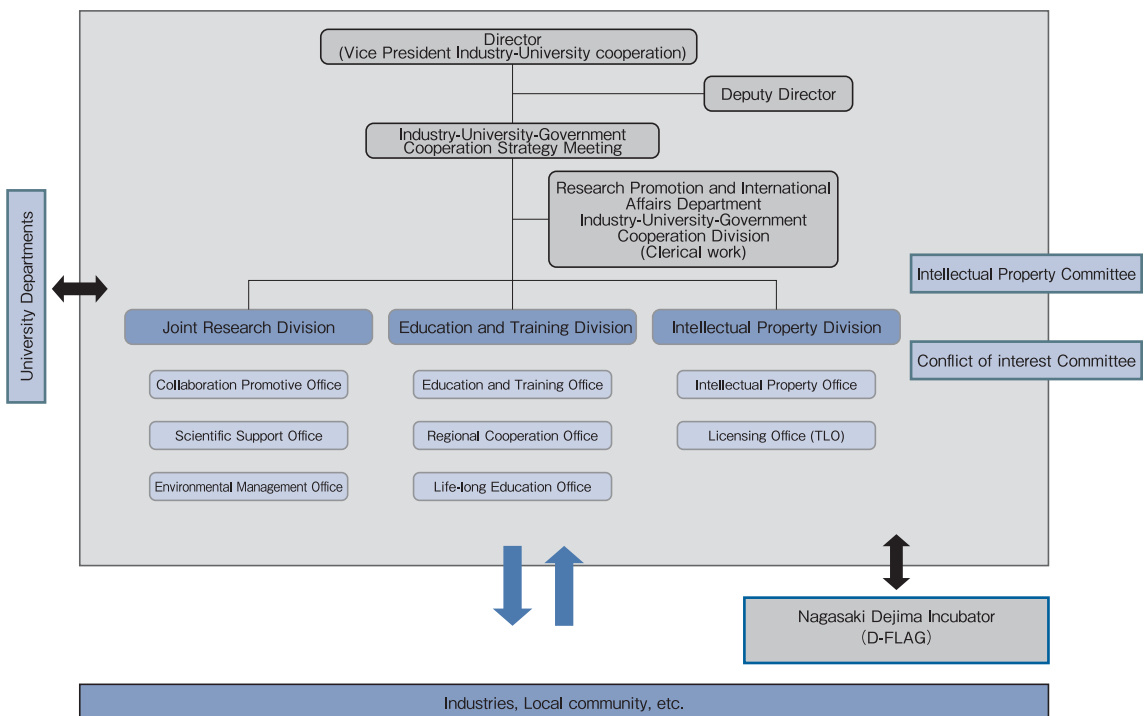
The Center for Industry, University and Government Cooperation, established in June, 2011, consists of the Joint Research Division, the Education and Training Division and the Intellectual Property Division. The aim of this organization is to carry out comprehensive and functional industry-university-government cooperation, evaluation, management and application of research findings and to provide life-long learning opportunities under the strategic driving force of Nagasaki University.

As an intermediary between the university and the community, the Joint Research Division promotes providing research seeds and information, taking technical consultation, undertaking requested analysis and providing technical advice in instrumental analysis. The division also promotes the taking care of precision analytical instruments and the practice of the environmental safety management at Nagasaki University.

The Education and Training Division contributes to society by applying human resources supports for entrepreneurs and the local governments and promotes life-long learning programs that aim for the realization of the knowledge-based local society.

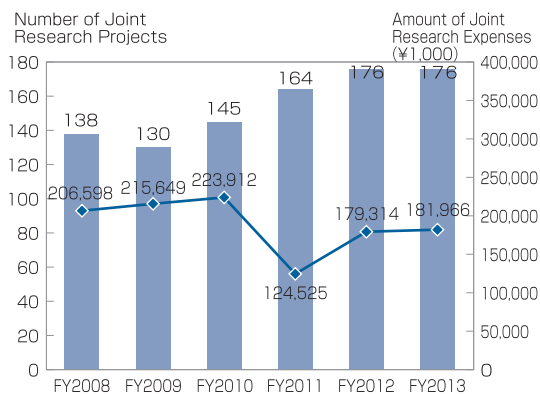
The Intellectual Property Division protects and enhances research findings as intellectual properties of Nagasaki University in order to develop new products and industries providing research findings to industry, and results in contribution to global society.

Center for Industry, University and Government Cooperation Nagasaki University

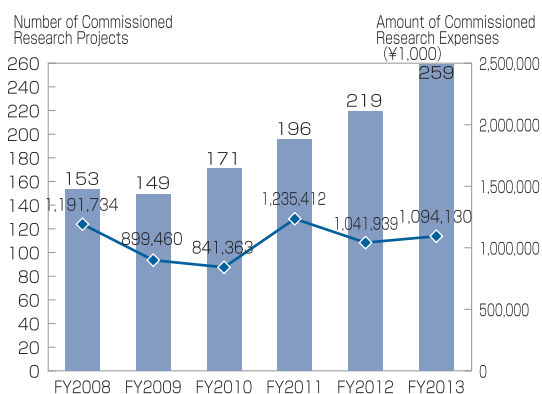


Industry-University Cooperation

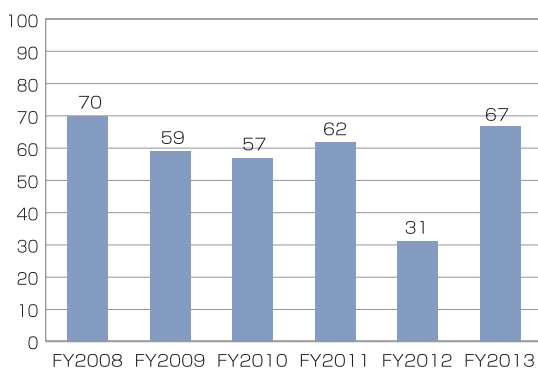
Joint Research



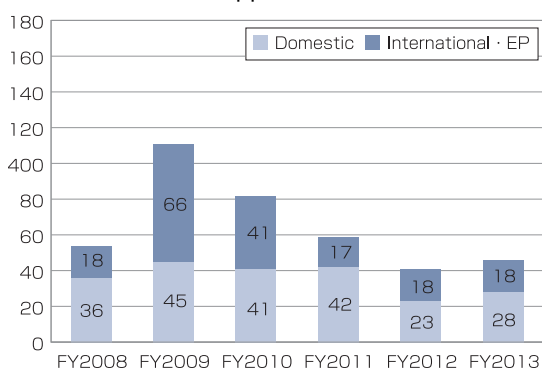
Commissioned Research



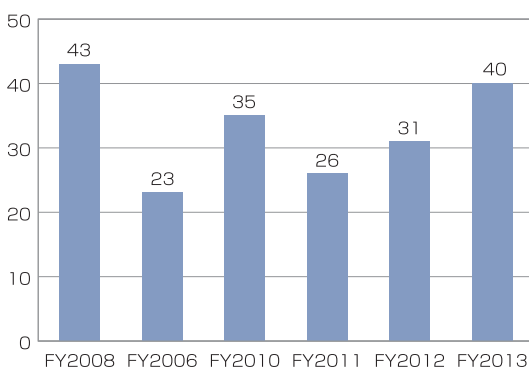
Invention Submission



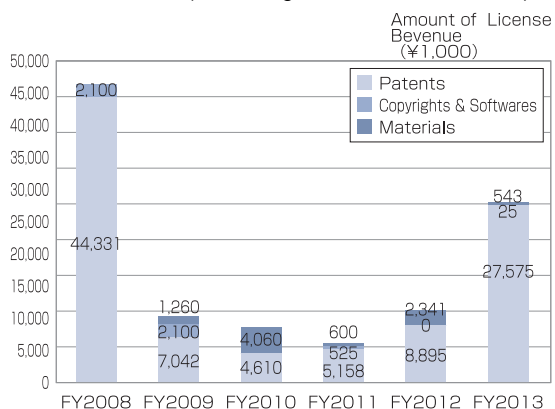
Number of Patent Applications



Number of Patent Licenses



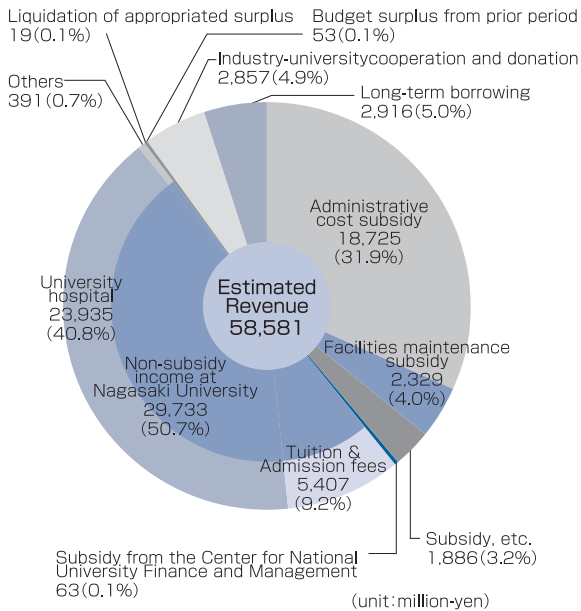
License Revenue (including license and transfer)



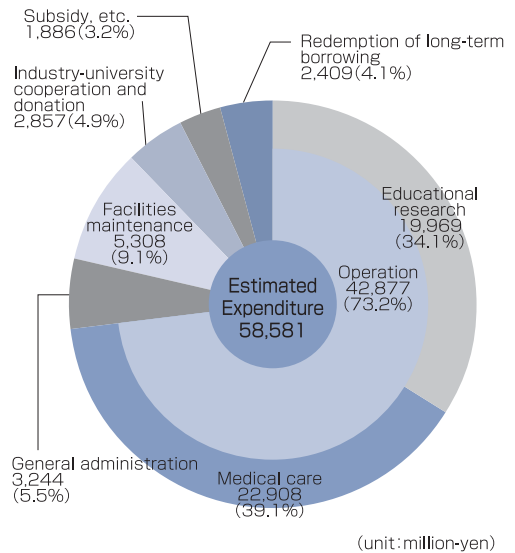


FY 2014 Budget

(Revenue)



(Expenditure)



Funds from outside the University

Grants-in-Aid for Scientific Research

2014 .5

Type of Research	Number of Grants	Amounts (¥1 ,000)
Grant-in-Aid for Scientific Research on Innovative Areas	20	117 ,800
Grant-in-Aid for Scientific Research (A)	10	85 ,800
Grant-in-Aid for Scientific Research (B)	78	262 ,000
Grant-in-Aid for Scientific Research (C)	294	373 ,050
Grant-in-Aid for Exploratory Research	87	104 ,400
Grant-in-Aid for Young Scientists (A)	6	28 ,100
Grant-in-Aid for Young Scientists (B)	138	164 ,700
Grant-in-Aid for Research Activity Start-up	8	8 ,000
Encouragement of Science	6	3 ,400
Grant-in-Aid for JSPS Fellows	14	14 ,500
Total	661	1 ,161 ,750

Scholarship

FY 2013

Number	Amounts (¥1 ,000)
1 ,750	988 ,944

Commissioned Research

FY 2013

Number	Amounts (¥1 ,000)
259	1 ,094 ,130

Joint Research with Private Sectors

FY 2013

Number	Amounts (¥1 ,000)
163	181 ,966

" Amounts " shows direct cost only.

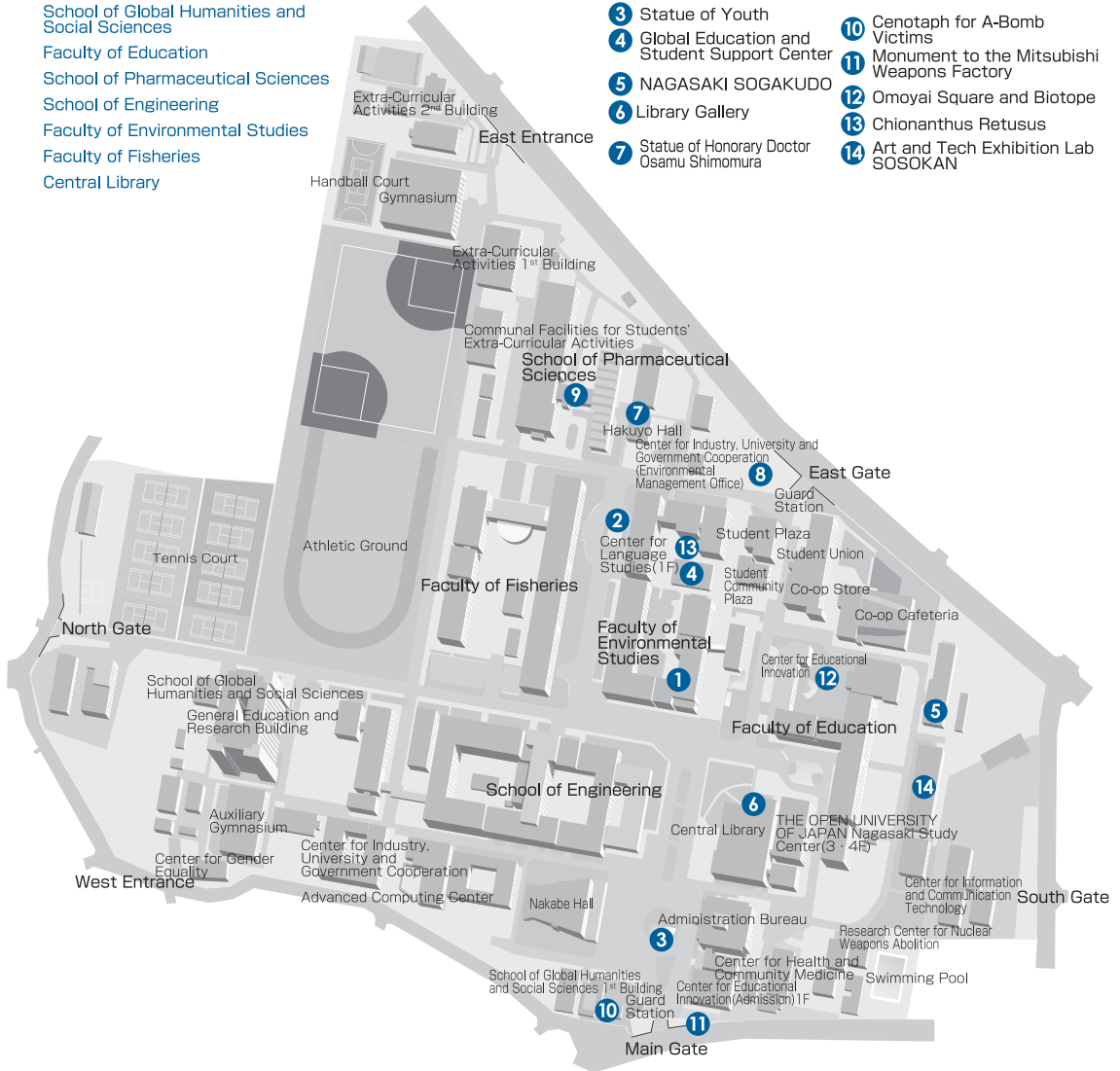


Campus

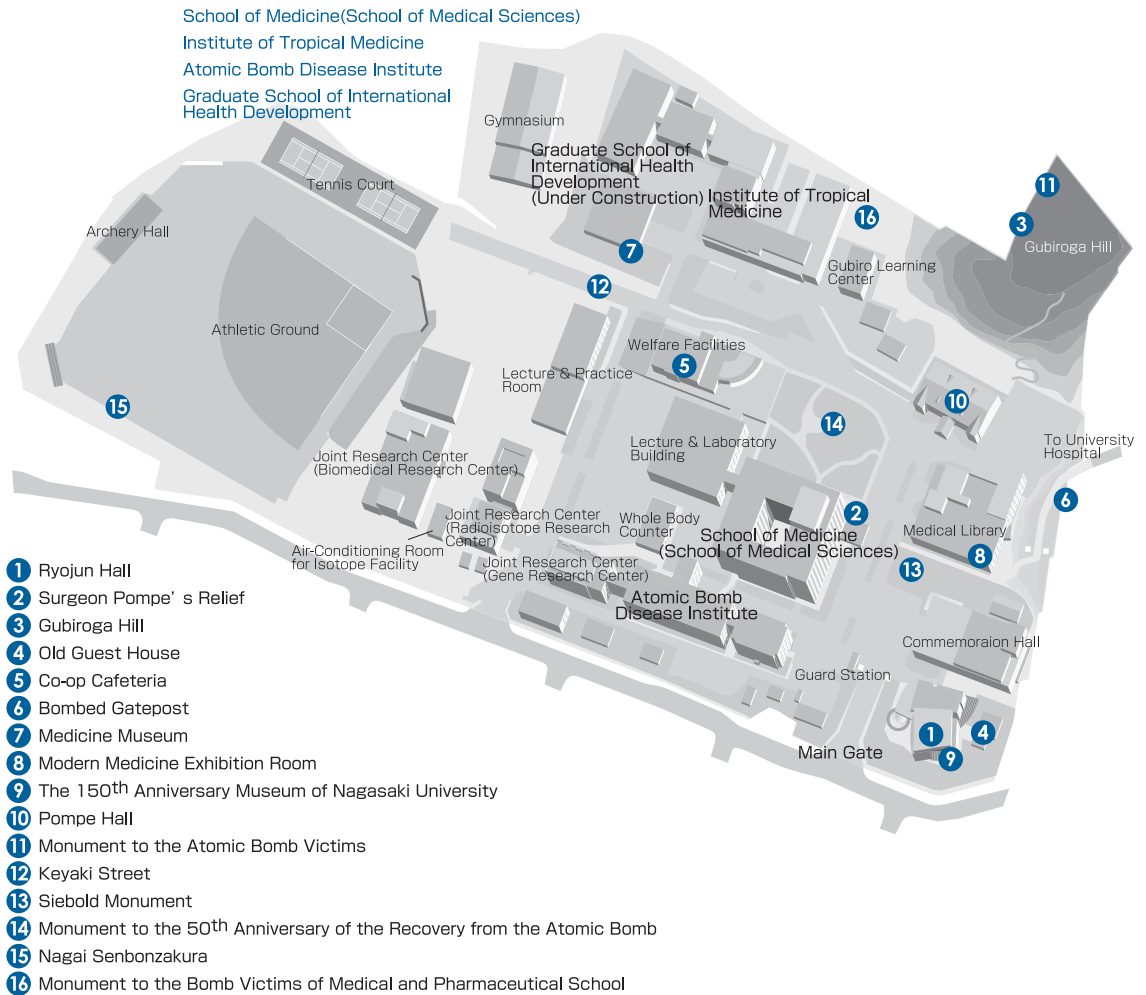
Bunkyo Campus

Administration Bureau
 School of Global Humanities and Social Sciences
 Faculty of Education
 School of Pharmaceutical Sciences
 School of Engineering
 Faculty of Environmental Studies
 Faculty of Fisheries
 Central Library

- | | |
|---|---|
| 1 Clock Tower and Mural | 8 Medicinal Plant Garden |
| 2 Whale Cannon | 9 History Museum of Medicine |
| 3 Statue of Youth | 10 Cenotaph for A-Bomb Victims |
| 4 Global Education and Student Support Center | 11 Monument to the Mitsubishi Weapons Factory |
| 5 NAGASAKI SOGAKUDO | 12 Omoyai Square and Biotope |
| 6 Library Gallery | 13 Chionanthus Retusus |
| 7 Statue of Honorary Doctor Osamu Shimomura | 14 Art and Tech Exhibition Lab SOSOKAN |



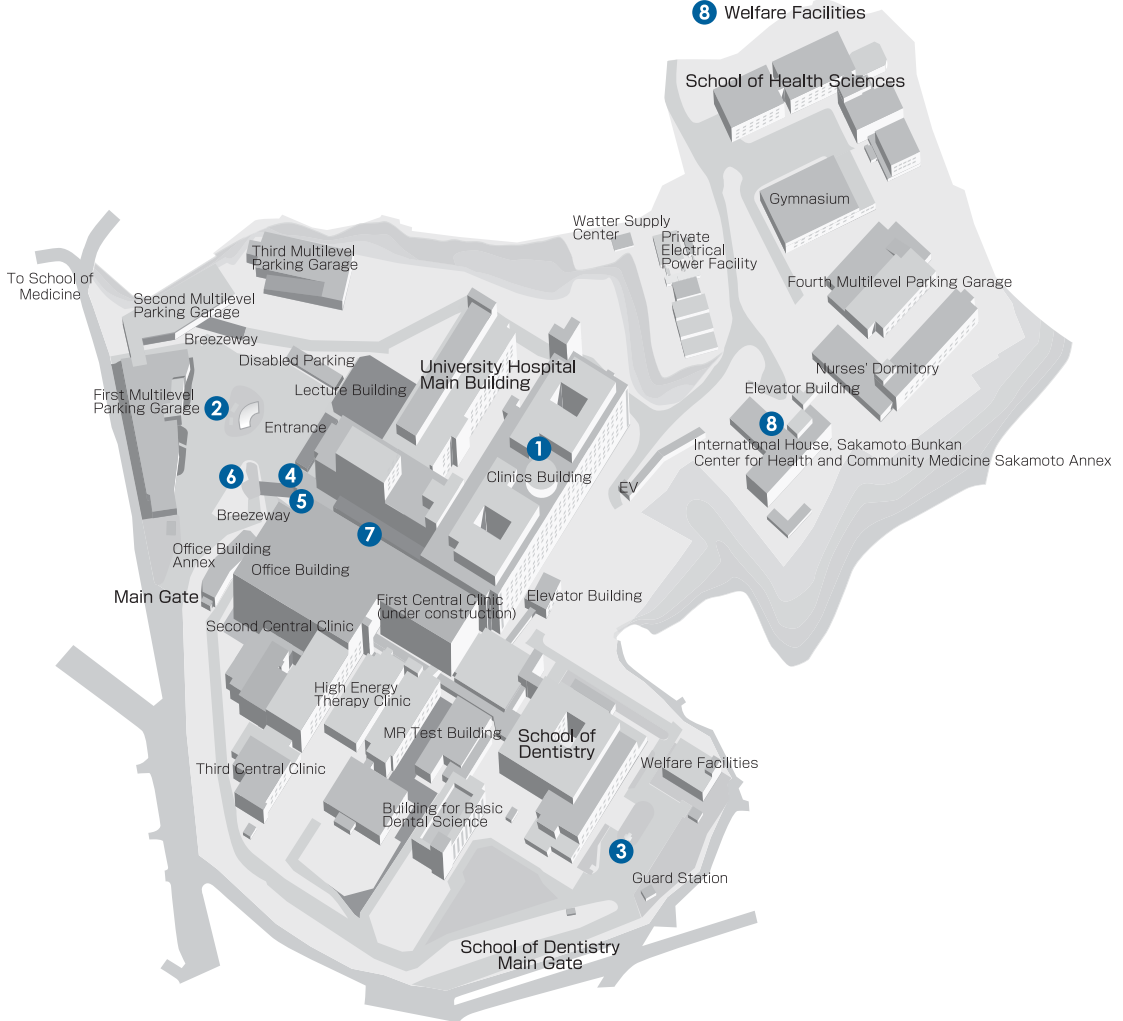
Sakamoto Campus 1



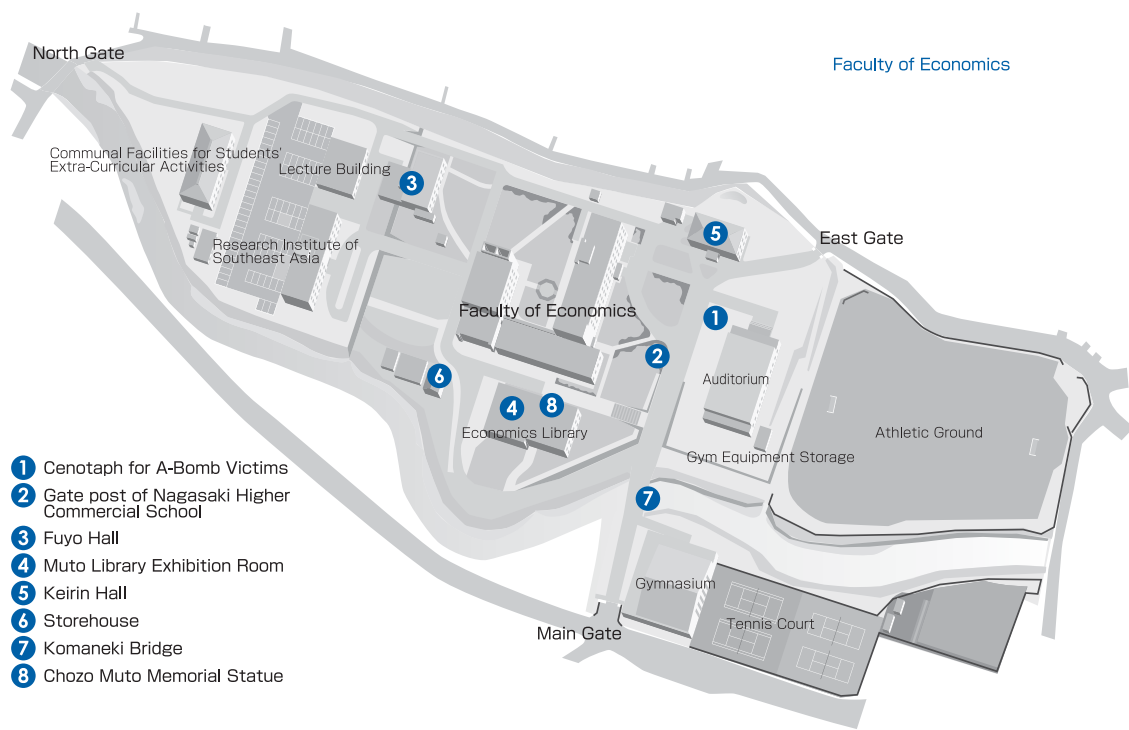
Sakamoto Campus 2

School of Health Sciences
 School of Dentistry
 University Hospital

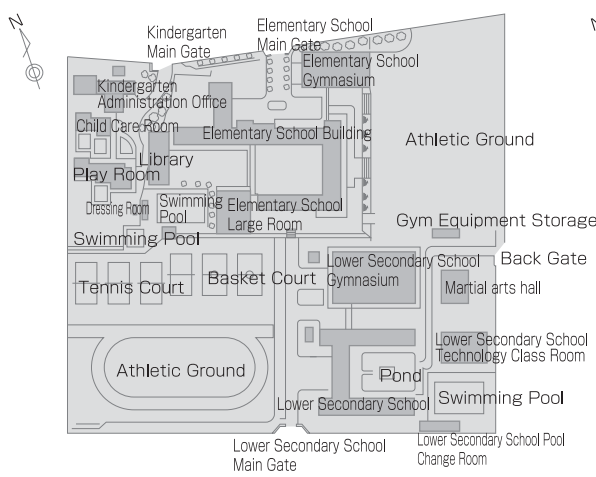
- 1 Sky Lounge Pompe
- 2 Statue of Child Holding Up a Water Bowl
- 3 Bombed Camphor Tree
- 4 Gallery
- 5 Corridor
- 6 Monument to Nagasaki Medical College Hospital
- 7 Lawson
- 8 Welfare Facilities



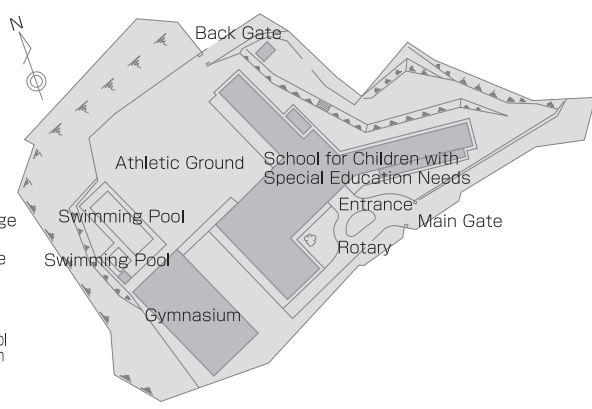
Katafuchi Campus



Affiliated Schools (Kindergarten · Elementary School · Lower Secondary School)



School for Children with Special Education Needs



Welfare Facilities

Sports facilities

Facilities Campuses	Gymnasium	Archery Hall	Judo Hall	Kendo Hall	Martial Arts Hall	Tennis Court	Athletic Ground	Volleyball Court	Swimming Pool	Handball Court	Remarks
	Bunkyo Campus	2	1	1	1		8	1	2	1	
Katafuchi Campus	1					4	1				
Sakamoto Campus	2	1			1	2	1				
Total	5	2	1	1	1	14	3	2	1	1	

Other major facilities

Name	Departments, etc.	Address	Facilities	Services	Governing Bodies
Seaside Training Center	Student Support Department	Shishigawa Go, Togitsu Cho, Nishisonogi Gun	Accommodation facilities Dining room Boats	Student extra-curricular activities Workshop for university staff Recreation	Nagasaki University
Shimabara Joint Training Center For National Universities in Kyusyu Area	"	1201 Ko Kureishibaru Shimabara City	Accommodation facilities Physical education facilities	Workshop Recreation	Nagasaki University
Communal Facilities for Students' Extra-Curricular Activities	"	1-14 Bunkyo, Bunkyo campus	Communal room All purpose room Meeting room	Student extra-curricular activities	Nagasaki University
Student Union	"	"	Getting a job support, Career information section Communal lounge Japanese room Tea-ceremony room Multipurpose room Cafeteria Coffee shop School supply store Barber Beauty shop	Collection of job information, offer and consultation Student extra-curricular activities Sale of food Cafeteria Coffee shop Sale of books and daily necessities Hair trimming and setting	Nagasaki University Nagasaki University Co-op Suppliers
Student Plaza	"	"	Multipurpose hall 1 Multipurpose hall 2	Student extra-curricular activities	Nagasaki University
Global education and student support center	"	"	Bunkyo Sky Hall	Lecture Student extra-curricular activities	Nagasaki University
Student Community Plaza	"	"	Student lounge Meeting room	Student extracurricular activities	Nagasaki University
Communal Facilities for Student Extra-Curricular Activities	Faculty of Economics	4-2-1 Katafuchi Faculty of Economics Katafuchi campus	Lounge Communal room Communal meeting room Music practice room Music appreciation room Workshop room Photo lab All purpose room	Student extra-curricular activities	Nagasaki University

Name	Departments, etc.	Address	Facilities	Services	Governing Bodies
Sakamoto Campus 1 Communal Facilities for Student Extra- Curricular Activities	School of Medical Sciences, School of Medicine	1-12-4 Sakamoto School of Medicine Sakamoto campus	Communal room Music practice room Outdoor equipment storage	Student extra- curricular activities	Nagasaki University
Sakamoto Campus 2 Communal Facilities for Student Extra- Curricular Activities	School of Health Sciences, School of Medicine	1-7-1 Sakamoto School of Health Sciences School of Medicine Sakamoto campus	Lounge Equipment storage	Student extra- curricular activities	Nagasaki University
Fuyo Hall	Faculty of Economics	4-2-1 Katafuchi Faculty of Economics Katafuchi campus	Lounge · Cafeteria School supply store	Cafeteria Sale of books, food, and daily necessities	Nagasaki University Nagasaki University Co-op
Welfare facilities	School of Medical Sciences, School of Medicine	1-12-4 Sakamoto School of Medicine Sakamoto campus	Lounge Cafeteria · School supply store	Cafeteria Sale of books, food, and daily necessities	Nagasaki University Nagasaki University Co-op
"	School of Dentistry	1-7-1 Sakamoto School of Dentistry Sakamoto campus	Lounge · Japanese room Cafeteria	Student extra-curricular activities Cafeteria Sale of books and daily necessities	Nagasaki University Nagasaki University Co-op
"	School of Health Sciences, School of Medicine	1-7-1 Sakamoto University Hospital Sakamoto campus	Cafeteria School supply store	Cafeteria Sale of daily necessities	Nagasaki University Co-op

Land · Buildings · Ships

Land and Buildings

Faculties, Centers, etc.	Address	Land (㎡)		Buildings (㎡)	
		University-owned	Leased	University-owned	Leased
Bunkyo Campus	1-14 Bunkyo, Nagasaki City	187,125		40,976 120,738	
Accommodation Facility " Kangetsuso"	1-1-1 Kami Nishiyama, Nagasaki City	903		228 399	
Seaside Training Center	Shishigawa Go, Togitsu Cho, Nishisonogi Gun	1,451	106	371 616	
Kindergarten·Elementary School· Lower Secondary School	4-2-3 Bunkyo, Nagasaki City	51,185		8,979 16,151	
School for Children with Special Education Needs	4-2-1 Yanagidani Machi, Nagasaki City	12,529		2,452 3,527	
Katafuchi Campus	4-2-1 Katafuchi, Nagasaki City	51,843		6,831 16,413	
Sakamoto Campus 1	1-12-4 Sakamoto, Nagasaki City	91,231		18,019 55,018	
School of Medicine Charnel House	4-5-9 Zenza, Nagasaki City		48	13 13	

Faculties, Centers, etc.	Address	Land (m ²)		Buildings (m ²)	
		University-owned	Leased	University-owned	Leased
Sakamoto Campus 2	1-7-1 Sakamoto, Nagasaki City	86,807		<u>33,886</u> 175,385	
Nomozaki Research Laboratory	1321 Nomo Machi, Nagasaki City	15,899		<u>448</u> 448	
Institute for East China Sea Research	1551-7 Taira, Nagasaki City	10,900		<u>1,688</u> 2,648	
University Housing		22,753		<u>2,600</u> 11,335	<u>1,106</u> 3,304
Shimabara Joint Training Center for National Universities in Kyushu Area	1201 Ko Kureishibaru, Shimabara City	120,286		<u>1,793</u> 2,329	
International House	12-1 Nishi Machi, Nagasaki City	3,044		<u>635</u> 1,837	<u>499</u> 1,300
University Housing		3,008			<u>910</u> 2,414
Sub Total		658,964	154	<u>118,919</u> 406,857	<u>2,515</u> 7,018
Total				659,118	

Ships

Faculty and Department	Ship's name	Material	Gross tonnage	PS	Complement
Faculty of Fisheries	Nagasaki-Marū	Steel Ship	842.00	2,800	22 instructors & staff plus 40 students
	Kakuyo-Marū	Aluminum Alloy Ship	155.00	1,428 × 2	15 instructors & staff plus 18 students
Student Support Department	Kinpu	F R P		90	Rescue Boat Capacity : 10

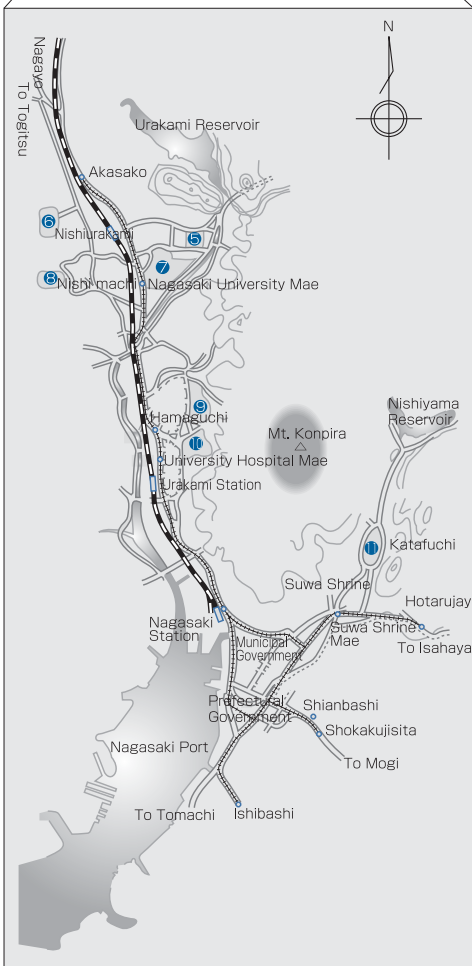
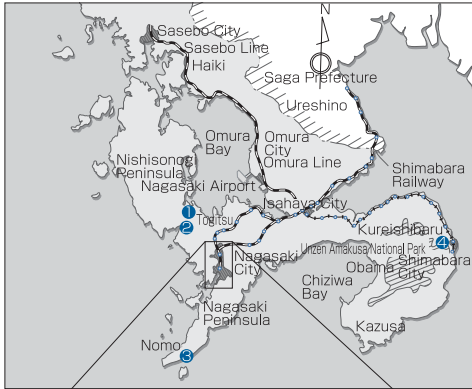
Address/TEL of Faculties, Centers, etc.

Faculties, etc.	TEL	Address
• Center for International Collaborative Research	095 819 7008	1-1-2-4 Sakamoto, Nagasaki City 852-8523
• Center for Industry, University and Government Cooperation		
Joint Research Division	095 819 2231	1-1-4 Bunkyo, Nagasaki City 852-8521
Education and Training Division	095 819 2876	"
	Education and Training	
	095 819 2233	
	Life-Long Education	
Intellectual Property Division	095 819 2188	"
• Center for Public Relations Strategy	095 819 2007	"
• Liaison Center for International Education	095 819 2120	"
• Center for Research Promotion Strategy	095 819 2208	"
• Audit Office	095 819 2182	"
• Promotion Office		"
Administration Bureau	095 819 2016	
	General Planning Division	
	095 819 2032	
	Personnel Division	
	095 819 2039	
	Research Planning Division	
	095 819 2038	
	Industry-University-Government Cooperation Division	
	095 819 2050	
	Finance Planning Division	
	095 819 2060	
	Finance Management Division	
	095 819 2161	
	Procurement Division	
	095 819 2072	
	Education Support Division	
	095 819 2103	
	Student Support Division	
	095 819 2111	
	Admission Division	
	095 819 2131	
	Facilities Planning Division	
	095 819 2137	
	Facilities Maintenance Division	

Faculties, etc.	TEL	Address
	095 819 2141 Facilities Management Division	
	095 819 2022 Information Planning Division	
	095 819 2193 Academic Information Management Division	
	095 819 2198 Academic Information Services Division	
• Center for Health and Community Medicine	095 819 2214	1-1 4 Bunkyo, Nagasaki City 852-8521
• Center for Frontier Life Sciences		
Radioisotope Research Center	095 819 7150	1-12-4 Sakamoto, Nagasaki City 852-8523
Biomedical Research Center	095 819 7134	"
Gene Research Center	095 819 7191	"
• Center for Information and Communication Technology	095 819 2222	1-1 4 Bunkyo, Nagasaki City 852-8521
• Center for Educational Innovation	095 819 2077	"
• Advanced Computing Center	095 819 2705	"
• Center for Language Studies	095 819 2077	"
• Research Center for Nuclear Weapons Abolition	095 819 2164	"
• Student Affairs Information	095 819 2072	"
• Yattemyu Desk	095 819 2870	"
• Center for Gender Equality	095 819 2889	"
• Student Accessibility Office	095 819 2948	"
• Medical Innovation Center	095 819 2230	"
• Center of Regional Educational Partnerships	095 819 2184	"
• Research and Support Center for the Future of Fukushima		"
• International House	095 845 0201	12-1 Nishi Machi, Nagasaki City 852-8043
• International House, Sakamoto Bunkan	095 819 7519	1-7-1 Sakamoto, Nagasaki City 852-8102
• Seaside Training Center	095 882 8301	Shishigawa Go, Togitsu Cho, Nishisonogi Gun 851-2111
• Shimabara Joint Training Center for National Universities in Kyushu Area	0957 64 2201	1201 Ko Kureishibaru, Shimabara City 855-0026
• Tokyo Office	03 6257 1940	503 Cross Office Uchisaiwaicho, 1-18-6 Nishishinbashi, Minato-ku, Tokyo 105-0003
• School of Global Humanities and Social Sciences	095 819 2934	1-1 4 Bunkyo, Nagasaki City 852-8521
• Faculty of Education	095 819 2263	1-1 4 Bunkyo, Nagasaki City 852-8521
Kindergarten	095 819 2288	4-23 Bunkyo, Nagasaki City 852-8131
Elementary School	095 819 2272	"
Lower Secondary School	095 819 2278	"
School for Children with Special Education Needs	095 845 5646	42-1 Yanagidani, Nagasaki City 852-8046
Center for Education Research and Training	095 819 2291	1-1 4 Bunkyo, Nagasaki City 852-8521

Faculties, etc.	TEL	Address
• Faculty of Economics	095 820 6300	4-2-1 Katafuchi, Nagasaki City 850-8506
• School of Medicine		
School of Medical Sciences	095 819 7004	1-12-4 Sakamoto, Nagasaki City 852-8523
School of Health Sciences	095 819 7900	1-7-1 Sakamoto, Nagasaki City 852-8520
		(Audio assistance is available after office hours.)
• University Hospital	095 819 7200	" 1-7-1 Sakamoto, Nagasaki City 852-8501
• School of Dentistry	095 819 7600	" 1-7-1 Sakamoto, Nagasaki City 852-8588
• School of Pharmaceutical Sciences	095 819 2413	1-14 Bunkyo, Nagasaki City 852-8521
• School of Engineering	095 819 2489	"
• School of Environmental Studies	095 819 2713	"
• Faculty of Fisheries	095 819 2793	"
Training Ship "Nagasaki-Maru"	090 3022 2043	Taira, Nagasaki City 851-2213
Training Ship "Kakuyo-Maru"	090 3022 2044	"
• Institute of Tropical Medicine	095 819 7800	1-12-4 Sakamoto, Nagasaki City 852-8523
		(Audio assistance is available after office hours.)
Center for Infectious Disease Research in Asia and Africa	"	"
Tropical Medicine Museum	095 819 7868	"
• Atomic Bomb Disease Institute	095 819 7004	"
• Central Library	095 819 2193	1-14 Bunkyo, Nagasaki City 852-8521
Medical Library	095 819 7013	1-12-4 Sakamoto, Nagasaki City 852-8523
Economics Library	095 820 6309	4-2-1 Katafuchi, Nagasaki City 850-8506
• Graduate School of Engineering	095 819 2489	1-14 Bunkyo, Nagasaki City 852-8521
• Graduate Schools of Fisheries Science and Environmental Studies		
(Institute of Fisheries Science)	095 819 2793	1-14 Bunkyo, Nagasaki City 852-8521
(Institute of Environmental Studies)	095 819 2713	"
Institute for East China Sea Research	095 850 7311	1551-7 Taira, Nagasaki City 851-2213
• Graduate School of Science and Technology	095 819 2491	1-14 Bunkyo, Nagasaki City 852-8521
• Graduate School of Biomedical Sciences		
(Medical Sciences)	095 819 7004	1-12-4 Sakamoto, Nagasaki City 852-8523
(Health Sciences)	095 819 7900	1-7-1 Sakamoto, Nagasaki City 852-8520
		(Audio assistance is available after office hours.)
(Dental Sciences)	095 819 7600	" 1-7-1 Sakamoto, Nagasaki City 852-8588
(Pharmaceutical Sciences)	095 819 2413	" 1-14 Bunkyo, Nagasaki City 852-8521
Medicinal Plant Garden	"	" 1-12-4 Sakamoto, Nagasaki City 852-8523
• Graduate School of International Health Development	095 819 7008	

Location Map



- Seaside Training Center
- Institute for East China Sea Research
- Nomozaki Research Laboratory
- Shimabara Joint Training Center for National Universities in Kyushu Area
- Kindergarten, Elementary School, Lower Secondary School
- School for Children with Special Education Needs
- Center for Industry, University and Government Cooperation, Center for Public Relations Strategy, Center for Research Promotion Strategy, Liaison Center for International Education Audit Office, Administration Bureau, School of Global Humanities and Social Sciences, Faculty of Education, Graduate School of Education, Center for Education Research and Training, School of Pharmaceutical Sciences, School of Engineering, Faculty of Environmental Studies, Faculty of Fisheries, Central Library, Graduate School of Engineering, Graduate School of Fisheries Science and Environmental Studies, Graduate School of Biomedical Sciences (Pharmaceutical Sciences), Medicinal Plant Garden, Center for Health and Community Medicine, Center for Frontier Life Sciences, Center for Information and Communication Technology, Center for Educational Innovation, Advanced Computing Center, Center for Language Studies, Research Center for Nuclear Weapons Abolition, Student Affairs Information Promotion Office, Y-attemyu Desk, Center for Gender Equality, Medical Innovation Center, Center for Regional Educational Partnerships, Student Accessibility Office, Research and Support Center for the Future of Fukushima
- International House
- Center for International Collaborative Research
- School of Medicine (School of Medical Sciences)
- Institute of Tropical Medicine
- Atomic Bomb Disease Institute
- Graduate School of Biomedical Sciences (Medical Sciences)
- Graduate School of International Health Development
- Center for Frontier Life Sciences
- Medical Library
- University Hospital, School of Dentistry, Graduate School of Biomedical Sciences (Health Sciences · Dental Sciences), School of Medicine (School of Health Sciences)
- Faculty of Economics, Graduate School of Economic, Economics Library

Nagasaki University Logo

Formal Logo



The formal logo was designed in 1949 to raise a sense of common bonds among university members and to provide moral support for them in developing as a university. A Dutch ship representing Nagasaki, the only door for the Western culture during the Period of Isolation, has the initial letters of Nagasaki University “N.U.” on its bow as well as the Chinese character “大學” meaning “university” at its right.

With its reorganization into a National University Corporation, the existing symbol mark was modified on April 1, 2005 to establish the formal university logo.

Informal Logo



The informal logo was designed on April 1, 2005 for use in a variety of more casual occasions.

The yellow line in the center stands for “Students and Faculty”, while the green line on the right is for the “Land Area of Japan and Its Territory” with its rich natural environment. The blue line on the left represents the “Vast Sea with the International Community” surrounding the “Land Area of Japan and Its Territory”.

The points where the lines intersect show “Harmony and Contribution” among the areas, and the yellow circles are meant to express “Creativity”.

Seen as a whole, the yellow line for the “Students and Faculty” and the green line for the “Land Area of Japan and Its Territory” form the inverted Chinese character of “Person”, while the yellow line and the blue line for the “Vast Sea with the International Community” configure “Person” again. All together the lines shape the letter “N” for Nagasaki University.



国立大学法人

長崎大学

NAGASAKI UNIVERSITY

Center for Public Relations Strategy,
Nagasaki University

1-14 Bunkyo, Nagasaki City 852-8521

TEL.095-819-2007

URL <http://www.nagasaki-u.ac.jp/>