

OUTLINE OF NAGASAKI UNIVERSITY 2012



Nagasaki University's Philosophy

Nagasaki University contributes to the improvement of a well-balanced society by transmitting its inheritance of the traditional culture rooted in Nagasaki, cultivating a fertile creative sense in students, and developing innovative science for world peace.

Nagasaki University's Fundamental Objective

In order to realize its philosophy, Nagasaki University has been promoting the advancement and individualization of education and research under its fundamental objective expressed as, “Nagasaki University continues its role as a ‘center for the transmission of intellectual information’ which is indispensable for the world, while moving forward together with local society.” Also, during the period of the new mid-term goal, maintaining this fundamental objective, we will continue to develop the clear direction of our organizational policy and the student character in order to lead the intellectual growth of society in the 21st century.

Nagasaki University aims:

- (1) to integrate our distinguished research areas of tropical and infectious diseases, radiology, and marine environment biological resources and other fields such as food resources and environment to become an internationally renowned education and research center
- (2) to further advance, individualize, and internationalize education and research, as well as to create influential research results and produce world-class scientists.
- (3) to foster sufficient, extensive ability at the bachelor’s degree level through the coordinated arrangement of both professional and liberal arts education as well as to strengthen the organizational development of the graduate school’s education curriculum, leading to a never-ending line of Nagasaki-University-brand professionals.
- (4) to contribute to a more active, sophisticated, and internationalized education of the local community, its medical care, governmental administration, industry, and economy by giving back to society prominent educational and research achievements which can serve as the driving force of decentralization.
- (5) to promote collaborative research at our overseas research hubs in Asia and Africa as well as improve the development courses for professionals who wish to dedicate themselves to work in international contribution and cooperation for the sustainable development of developing countries.
- (6) to nurture students’ dreams and their human potential, maximizing their abilities as well as improving the environment in order to help young scientists become independent and to create a university campus where young people full of determination and spirit are gathered.
- (7) to directly link reviews and evaluation results to the improvement of education, while reforming the university management system organizationally and continuously, thereby enhancing the management framework of university cooperation.

Contents

Historical Sketch

Historical Sketch	2
-------------------------	---

Organization

Organizational Chart	12
Successive Presidents of Nagasaki University	14
Board of Trustees	15
Members of the Presidential Nominations Committee	15
Members of the Management Committee	15
Members of the Education and Research Council	16
Board Members and Faculty/Administrative Staff	17
Number of Board Members and Faculty/Administrative Staff	19

Education and Research

Faculties and Schools	
Faculty of Education	20
Faculty of Economics	20
School of Medicine	20
School of Dentistry	20
School of Pharmaceutical Sciences	20
School of Engineering	20
Faculty of Environmental Studies	20
Faculty of Fisheries	20
Graduate Schools	
Graduate School of Education	21
Graduate School of Economics	21
Graduate School of Engineering	21
Graduate School of Fisheries Science and Environmental Studies	21
Graduate School of Science and Technology	21
Graduate School of Biomedical Sciences	21
Graduate School of International Health Development	21
Academic Calendar	21

University Facilities

University Research Institute: Institute of Tropical Medicine	22
University Library	22
University Hospital	23
Schools and Kindergarten Affiliated with	

the Faculty of Education	25
Faculty-affiliated Institutes for Education and Research	26
Center for Health and Community Medicine	26
University Institutes for Education and Research	26

Distinctive Education and Research

Distinctive Research	27
Distinctive Education	28

Number of Students, etc.

Number of Students	31
FY 2012 New Students	33
FY 2011 Graduates and Their Paths after Graduation	34
Change in After-graduation Paths for the Past Five Years	35
Number of Degrees Conferred	36

International Exchange

FY 2012 International Students	37
Agreements on Academic Exchange with Overseas Institutions	38
Faculty Staff Visited Overseas Institutions and International Researchers Visited NU in FY 2011	42

Social Contribution

Center for Industry, University and Government Cooperation	43
Industry-University Cooperation	44

Finances

FY 2012 Budget	45
Funds from Outside the University	45

Campus

Campus Maps	46
Welfare Facilities	50
Land • Buildings • Ships	51
Address/TEL of Faculties, Centers, etc.	53
Location Map	56



Historical Sketch

On November 12, 1857, Dutch army surgeon Pompe van Meerdervoort initiated medical lectures in the Dutch language to government doctor Ryojyun Matsumoto and 11 other persons. This medical school called Igaku Denshusho is the origin of today's School of Medicine as well as Nagasaki University.

1857 . 11	• Igaku Denshusho was established	1876 . 1	• Training Center was renamed Training Center for Elementary School Teacher.
1860	• Yojosho (Sanatorium) was established for citizens with the facilities for the hospital, chemical, pharmaceuticals, library, autopsy, and clinical training. (origin of today's University Hospital of Medicine and Dentistry)	5	• Training Center for Elementary School Teacher was renamed Nagasaki Prefectural Normal School.
1861 . 9	• Yojosho (Sanatorium) was improved and Igakusho was built next to it. (Facilities for medical education institution were completed.)	6	• Nagasaki Hospital Medical Training Center was established in Nagasaki Hospital to resume medical education.
1865	• Yojosho (Sanatorium) was renamed Seitokukan School of Medicine. In October, Bunseki Kyurijyo (educational institution to teach basic science including physics and chemistry) was established.	1877 . 4	• Nagasaki Prefectural Normal School was renamed Kiyō Normal School.
1868 . 10	• Seitokukan School of Medicine was renamed the Nagasaki City School of Medicine.	1878 . 1	• Nagasaki Hospital Medical Training Center was renamed Nagasaki Medical School.
1869	• Nagasaki City School of Medicine was renamed Nagasaki Prefectural School of Medicine.	2	• National Nagasaki Normal School was discontinued. Its buildings and equipment were transferred to Nagasaki Prefecture.
1871 . 10	• The Ministry of Education held jurisdiction over Nagasaki Prefectural School of Medicine and changed its name to National Nagasaki Medical School.	6	• Kiyō Normal School was renamed Nagasaki Normal School.
1874	• Due to troop deployment in Taiwan, education function of National Nagasaki Medical School was discontinued whereas hospital function was transferred to the branch hospital.	1879 . 1	• Nagasaki Medical School became prefectural and had Nagasaki Hospital become its affiliated school.
2	• National Nagasaki Normal School was established.	1883	• According to the Ordinance of the Ministry of Education, Nagasaki Medical School was designated as a Class A medical school. (Medical license could be granted after graduation without taking national examinations. Only 13 such schools existed in Japan.)
3	• Nagasaki Elementary School Teacher Training Center was established.	1884 . 6	• Nagasaki Prefectural Women's Normal School was established.
1875	• Due to the completion of troop deployment in Taiwan, buildings of the branch hospital were transferred to Nagasaki Prefecture. With a subsidy from the Japanese government, Nagasaki Hospital was established.	1886 . 4	• Nagasaki Prefectural Women's Normal School merged with Nagasaki Normal School and established its Women's Branch.
2	• Nagasaki Elementary School Teacher Training Center was renamed Training Center.	6	• Nagasaki Normal School, Women's Branch established its affiliated kindergarten.
11	• Elementary School affiliated with National Nagasaki Normal School was established.	6	• According to the Normal School Ordinance, Nagasaki Normal School was renamed Nagasaki Prefectural Normal School for Primary Education.

1887 . 8	<ul style="list-style-type: none"> According to the Higher Middle School Ordinance, the Fifth Higher Middle School, Department of Medicine was established. Nagasaki Medical School was discontinued in September. 	1921	<ul style="list-style-type: none"> Nagasaki Prefectural School of Teacher Training for Vocational Supplementary School Education was established in Isahaya-machi.
1890 . 6	<ul style="list-style-type: none"> The Division of Pharmaceutical Sciences was established in the Fifth Higher Middle School, Department of Medicine. (origin of today's School of Pharmaceutical Sciences) 	1922 . 4	<ul style="list-style-type: none"> Nagasaki Prefecture donated Nagasaki Hospital to the Japanese government. Nagasaki Hospital was renamed Hospital of Nagasaki Specialized School of Medicine. Nagasaki Specialized School of Medicine Training School for Nurses and Midwives was established.
1891 . 9	<ul style="list-style-type: none"> The Fifth Higher Middle School, Department of Medicine and its Division of Pharmaceutical Sciences were relocated to a new building in Urakami Yamazato-mura, Nishisonogi-gun. (origin of the later establishment of Sakamoto Campus) 	1923 . 3	<ul style="list-style-type: none"> Nagasaki Specialized School of Medicine was promoted to Nagasaki Medical College by the National Medical College System and established its Specialized School of Medicine and Specialized School of Pharmaceutics. Hospital of Nagasaki Specialized School of Medicine was renamed Nagasaki Medical College Hospital and established its Training School for Nurses and Midwives.
1894 . 9	<ul style="list-style-type: none"> According to the Higher School Ordinance, the Fifth Higher Middle School, Department of Medicine and its Division of Pharmaceutical Sciences were renamed the Fifth Higher School, Department of Medicine and its Division of Pharmaceutical Sciences, respectively. 	1925 . 4	<ul style="list-style-type: none"> Nagasaki Medical College, Specialized School of Medicine was discontinued.
1898 . 4	<ul style="list-style-type: none"> According to the Teacher Education Ordinance, Nagasaki Prefectural Normal School for Primary Education was renamed Nagasaki Prefectural Normal School. 	1928	<ul style="list-style-type: none"> The Department of Fisheries was established in Nagasaki Prefectural School of Teacher Training for Vocational Supplementary School Education. (origin of today's Faculty of Fisheries)
1901 . 3	<ul style="list-style-type: none"> According to the Specialized School Ordinance, the Fifth Higher School, Department of Medicine became independent from the Fifth Higher School and established Nagasaki Specialized School of Medicine as well as its Division of Pharmaceutical Sciences. 	1929 . 2	<ul style="list-style-type: none"> Nagasaki Medical College Hospital Training School for Nurses and Midwives was renamed Nagasaki Medical College Hospital Training School for Midwives and Nurses.
1903	<ul style="list-style-type: none"> Nagasaki Prefectural Nagasaki Hospital Training School for Nurses was established. 	3	<ul style="list-style-type: none"> The Advanced Course of Trade was established in Nagasaki Higher Commercial School.
1905 . 3	<ul style="list-style-type: none"> Nagasaki Higher Commercial School was established. (origin of today's Faculty of Economics on Katafuchi Campus) 	12	<ul style="list-style-type: none"> Nagasaki Medical College Nomo Marine Biological Laboratory was established.
1908 . 4	<ul style="list-style-type: none"> Nagasaki Prefectural Normal School, Women's Branch became independent from Nagasaki Prefectural Normal School and established Nagasaki Prefectural Women's Normal School. 	1935 . 4	<ul style="list-style-type: none"> Nagasaki Prefectural School of Teacher Training for Vocational Supplementary School Education was renamed Nagasaki Prefectural School of Teacher Training for Youth School Education.
1917 . 5	<ul style="list-style-type: none"> The Department of Overseas Trade was established in Nagasaki Higher Commercial School. 	1937 . 4	<ul style="list-style-type: none"> Nagasaki prefectural Normal School was relocated to a new building in Nishiurakami-mura, Nishisonogi-gun. (site of today's Elementary School and Lower Secondary School affiliated with the Faculty of Education)
1920 . 11	<ul style="list-style-type: none"> Research Building was donated to Nagasaki Higher Commercial School. (today's Keirin Hall) 		

1939 . 5	<ul style="list-style-type: none"> • Nagasaki Medical College Temporary Specialized School of Medicine was established. 	8	<ul style="list-style-type: none"> • The atomic bomb was dropped in Nagasaki City. A total of 979 teachers and students were victimized: 897 from Nagasaki Medical College (including Specialized School of Medicine and Specialized School of Pharmaceutics), 54 from Nagasaki Normal School, 27 from Nagasaki Higher Commercial School, and one from Nagasaki Youth Normal School.
1942 . 3	<ul style="list-style-type: none"> • Nagasaki Prefectural School of Teacher Training for Youth School Education, Women's School was established in Isahaya Women's High School. 		
4	<ul style="list-style-type: none"> • Nagasaki Medical College East Asia Research Institute of Endemics was established. (origin of today's Institute of Tropical Medicine) 		
9	<ul style="list-style-type: none"> • Nagasaki Higher Commercial School Research Building was renamed Great East Asia Economic Research Institute. 		
1943 . 4	<ul style="list-style-type: none"> • According to the Normal School Education Ordinance, Nagasaki Prefectural Normal School and Nagasaki Prefectural Women's Normal School were merged to establish National Nagasaki Normal School and was promoted to specialized school category. 		
1944 . 3	<ul style="list-style-type: none"> • Nagasaki Higher Commercial School was renamed Nagasaki Specialized School of Economics. 		
4	<ul style="list-style-type: none"> • Nagasaki Specialized School of Economics established Nagasaki Specialized School of Industrial Management on its campus. • According to the Normal School Education Ordinance, Nagasaki Prefectural School of Teacher Training for Youth School Education (Men's Branch and Women's Branch) became National Nagasaki Youth Normal School, and was promoted to specialized school category. Nagasaki Prefectural School of Teacher Training for Youth School Education, Department of Fisheries was discontinued. • Nagasaki Medical College Temporary Specialized School of Medicine was renamed Nagasaki Medical College Specialized School of Medicine. 		
1945 . 6	<ul style="list-style-type: none"> • Nagasaki Medical College Hospital Training School for Midwives and Nurses was renamed Nagasaki Medical College Hospital Women's School of Public Welfare. 		

1965 . 3	<ul style="list-style-type: none"> • The Advanced Course in the School of Pharmaceutical Sciences was discontinued. 	1971 . 2	<ul style="list-style-type: none"> • The libraries were restructured. (Branch libraries of the Faculty of Education, the Faculty of Fisheries, the School of Pharmaceutical Sciences, and the Institute of Tropical Medicine were discontinued while branch libraries of the Faculty of Economics and the School of Medicine were still continued.)
4	<ul style="list-style-type: none"> • Graduate School of Pharmaceutical Sciences was established. • The Advanced Course was established in the Faculty of Arts and Sciences. 	4	<ul style="list-style-type: none"> • School for Handicapped Children was established in the Faculty of Education. • The Department of Commerce, Faculty of Economics was renamed the Department of Management. • The Department of Pharmaceutical Chemistry was established in the Graduate School of Pharmaceutical Sciences.
1966 . 4	<ul style="list-style-type: none"> • Health Center was established. • The School of Engineering (Departments of Mechanical Engineering and Electrical Engineering) was established. • Faculty of Arts and Sciences was renamed the Faculty of Education. The Advanced Course in the Faculty of Arts and Sciences was renamed the Advanced Course in the Faculty of Education. 	4	<ul style="list-style-type: none"> • The Advanced Courses (Mechanical Engineering, Electrical Engineering, and Structural Engineering) were established in the School of Engineering.
1967 . 4	<ul style="list-style-type: none"> • School for Handicapped Children Teacher Training Course was established in the Teacher Education Division, Faculty of Education. • The Department of Pharmaceutical Chemistry was established in the School of Pharmaceutical Sciences. • The Department of Structural Engineering was established in the School of Engineering. 	1972 . 4	<ul style="list-style-type: none"> • The Department of Industrial Chemistry was established in the School of Engineering. • Atomic Bomb Medical Information Center was established in the School of Medicine. • Medicinal Plant Garden was established in the School of Pharmaceutical Sciences.
6	<ul style="list-style-type: none"> • Research Institute of Endemics was renamed the Institute of Tropical Medicine. • The Fisheries Laboratory was established in the Faculty of Fisheries. 	5	<ul style="list-style-type: none"> • The Departments of Fishing, Fish Production, and Fish Breeding of the Faculty of Fisheries were restructured to establish the Department of Fisheries. • The Advanced Course in Civil Engineering was established in the School of Engineering. • Educational Engineering Center was established in the Faculty of Education.
1968 . 4	<ul style="list-style-type: none"> • The Department of Trade was established in the Faculty of Economics. 	1973 . 4	<ul style="list-style-type: none"> • The Departments of Fishing, Fish Production, and Fish Breeding of the Graduate School of Fisheries were restructured to established the Department of Fisheries. • The Advanced Course in Materials Science and Engineering was established in the School of Engineering. • The Kindergarten Teacher Training Course was established in the Teacher Education Division, Faculty of Education.
1969 . 4	<ul style="list-style-type: none"> • The Department of Civil Engineering was established in the School of Engineering. • Electric Computer Center was established. 	1974 . 4	
12	<ul style="list-style-type: none"> • The Advanced Courses in the Faculty of Fisheries were discontinued. (The Advanced Courses in Fishing, Fish Production, and Fish Breeding were discontinued, leaving in operation only the Advanced Course in Officer Training, with its name changed to the Advanced Course in Deep-sea Fishing.) • Graduate School of Fisheries was established. • The Department of Materials Science and Engineering was established in the School of Engineering. 		
1970 . 4			

	<ul style="list-style-type: none"> • Atomic Bomb Medical Information Center was renamed the Scientific Data Center for Atomic Bomb Disaster. 	11	<ul style="list-style-type: none"> • Drainage Analysis Science Center was established. (Drainage Analysis Center was discontinued.)
1975 . 4	<ul style="list-style-type: none"> • The Reference Room for the Tropical Medicine was established in the Institute of Tropical Medicine. 	1980 . 4	<ul style="list-style-type: none"> • Laboratory Animal Center for Biomedical Research was established in the School of Medicine.
6	<ul style="list-style-type: none"> • Construction of the training ship “Kakuyo-Maru” of the Faculty of Fisheries was completed. 	1981 . 4	<ul style="list-style-type: none"> • The preparatory office for founding of the University Hospital of the School of Dentistry was established.
1976 . 4	<ul style="list-style-type: none"> • Drainage Analysis Center was established. 	1982 . 4	<ul style="list-style-type: none"> • The Department of Electronic Engineering was established in the Graduate School of Engineering Science.
	<ul style="list-style-type: none"> • The Department of Electronic Engineering was established in the School of Engineering. 		<ul style="list-style-type: none"> • University Hospital of the School of Dentistry was established.
	<ul style="list-style-type: none"> • Graduate School of Engineering Science was established. 		<ul style="list-style-type: none"> • The preparatory office for founding of the University Hospital of the School of Dentistry was discontinued.
1977 . 4	<ul style="list-style-type: none"> • Shimabara Joint Training Center for National Universities in Kyushu Area was established. 		<ul style="list-style-type: none"> • The Divisions of Economics & Law and Management Information, Department of Commerce and Economics, Junior College of Business were reorganized into the Divisions of Economics, Economic Law, and Management Information.
	<ul style="list-style-type: none"> • The Department of Civil Engineering was established in the Graduate School of Engineering Science. 	1983 . 4	<ul style="list-style-type: none"> • The Department of Mechanical Engineering II was established in the Graduate School of Engineering Science.
	<ul style="list-style-type: none"> • The Advanced Courses (Mechanical Engineering, Electrical Engineering, and Structural Engineering) in the School of Engineering were discontinued. 		<ul style="list-style-type: none"> • The preparatory office for founding of the School of Allied Medical Sciences was established.
	<ul style="list-style-type: none"> • The preparatory office for founding of the School of Dentistry was established. 		<ul style="list-style-type: none"> • International House was established.
	<ul style="list-style-type: none"> • The Department of Commerce, Junior College of Business was renamed the Department of Commerce and Economics (Economics & Law and Management Information). 	1984 . 4	<ul style="list-style-type: none"> • School of Allied Medical Sciences (Department of Nursing) was established.
1978 . 3	<ul style="list-style-type: none"> • RI Center was established. 		<ul style="list-style-type: none"> • The preparatory office for founding of the School of Allied Medical Sciences was discontinued.
4	<ul style="list-style-type: none"> • The Department of Mechanical Engineering II was established in the School of Engineering. 		<ul style="list-style-type: none"> • Junior College of Business was renamed the Junior College of Commerce.
1979 . 4	<ul style="list-style-type: none"> • Animal Research Center for Tropical Infections was established in the Institute of Tropical Medicine. 		<ul style="list-style-type: none"> • 18 divisions of the Department of Fisheries, Faculty of Fisheries were reorganized into six large ones.
	<ul style="list-style-type: none"> • The Branch Library of the School of Medicine was renamed the Medical Library. 		<ul style="list-style-type: none"> • The Departments of Physical Therapy and Work Therapy were established in the School of Allied Medical Sciences.
5	<ul style="list-style-type: none"> • Information Center was established (Electric Computer Center was discontinued). 	10	
10	<ul style="list-style-type: none"> • The Department of Dentistry, School of Dentistry was established. 		
	<ul style="list-style-type: none"> • The preparatory office for founding of the School of Dentistry was discontinued. 		

1986 . 4	<ul style="list-style-type: none"> • Nursing School, School of Medicine was discontinued. • Graduate School of Dentistry was established. • The Departments of Pharmacy and Pharmaceutical Chemistry of the Graduate School of Pharmaceutical Sciences were restructured to establish the Department of Medical Pharmacy (Master's and Doctoral courses). • The Departments of Pharmacy and Pharmaceutical Chemistry of the School of Pharmaceutical Sciences were restructured to establish the Department of Pharmaceutical Sciences. • Center for Practical Education Research and Training was established in the Faculty of Education. (Educational Engineering Center was discontinued.) 		
6	<ul style="list-style-type: none"> • Center for Measurement Analysis was established. • Center for International Student Advising was established. 		
9	<ul style="list-style-type: none"> • Environmental Protection Center was established. (Drainage Analysis Science Center was discontinued.) 		
1987 . 4	<ul style="list-style-type: none"> • The School of Midwifery, School of Medicine was discontinued. • The Department of Marine Science and Development was established in the Graduate School of Engineering Science (Doctoral course). • The Diploma Course (Midwifery) was established in the School of Allied Medical Sciences. 		
1988 . 4	<ul style="list-style-type: none"> • Graduate School of Marine Science and Engineering was established (Doctoral course). • The Department of Marine Science and Development was transferred from the Graduate School of Engineering Science to the Graduate School of Marine Science and Engineering. 		
		1989 . 5	<ul style="list-style-type: none"> • The Departments of Electric Engineering and Electronic Engineering of the School of Engineering were restructured to establish the Department of Electrical Engineering and Computer Science. • Information Science Center was established. (Information Center was discontinued.) • Institute of Tropical Medicine was promoted to the National Collaborative Institute.
		1990 . 4	<ul style="list-style-type: none"> • The Departments of Mechanical Engineering and Mechanical Engineering of the School of Engineering were restructured to establish the Department of Mechanical Systems Engineering.
		6	<ul style="list-style-type: none"> • Joint Research Center was established.
		1991 . 4	<ul style="list-style-type: none"> • In the Faculty of Economics, eight divisions of the Department of Economics were reorganized into three large ones; eight divisions of the Department of Business were reorganized into two large ones, and six divisions of the Department of Trade were reorganized into two large ones of the Department of Finance. • In the School of Engineering, four divisions of the Department of Structural Engineering were reorganized into two large ones; four divisions of the Department of Civil Engineering were reorganized into two large ones; four divisions of the Department of Materials Science and Engineering were reorganized into two large ones; and four divisions of the Department of Industrial Chemistry were reorganized into two large ones of the Department of Applied Chemistry. • Radioisotope Research Center was established. (RI Center was discontinued.)
		1992 . 4	<ul style="list-style-type: none"> • The Departments of Electrical Engineering and Electronic Engineering of the Graduate School of Engineering Science were restructured to establish the Department of Electrical Engineering and Computer Science.
		1993 . 4	<ul style="list-style-type: none"> • Education and Research Center for Life-long Learning was established.
		1994 . 4	<ul style="list-style-type: none"> • Graduate School of Education was established. • The Advanced Course in the Faculty of Education was discontinued.

	<ul style="list-style-type: none"> • The Departments of Mechanical Engineering and Mechanical Engineering of the Graduate School of Engineering Science were restructured to establish the Department of Mechanical Systems Engineering. 		<ul style="list-style-type: none"> • The Divisions of Physical Education and Home Economics were established in the Department of Curriculum & Teaching, Graduate School of Education.
6	<ul style="list-style-type: none"> • 10 divisions of the Institute of Tropical Medicine were reorganized into three large ones. 		<ul style="list-style-type: none"> • The Department of Electrical Engineering and Computer Science of the School of Engineering was reorganized into the Department of Electrical and Electronic Engineering and the Department of Computer and Information Sciences.
1995 . 4	<ul style="list-style-type: none"> • Graduate School of Economics was established. 		<ul style="list-style-type: none"> • Center for Instrumental Analysis was established. (Center for Measurement Analysis was discontinued.)
	<ul style="list-style-type: none"> • The Advanced Course in the Faculty of Economics was discontinued. 	1999 . 4	<ul style="list-style-type: none"> • The Department of Clinical Pharmacy was established in the Graduate School of Pharmaceutical Sciences.
1996 . 5	<ul style="list-style-type: none"> • The Department of Industrial Chemistry of the Graduate School of Engineering Science was renamed the Department of Applied Chemistry. 		<ul style="list-style-type: none"> • The position of Vice President was established. (Director of the Student Services Department was discontinued.)
1997 . 4	<ul style="list-style-type: none"> • International Student Center was established. (Center for International Student Advising was discontinued.) 		<ul style="list-style-type: none"> • The Student Affairs Department was established in accordance with the merger of the Administration Bureau with the Student Services Department (Student Services Department was discontinued).
	<ul style="list-style-type: none"> • Atomic Bomb Disease Institute was established in the School of Medicine. (Atomic Bomb Disease Institute and Scientific Data Center for Atomic Bomb Disaster were discontinued.) 	2000 . 4	<ul style="list-style-type: none"> • The Divisions of Social Studies Education and Natural Science Education were established in the Department of Education, Graduate School of Education.
	<ul style="list-style-type: none"> • Marine Research Institute was established in the Faculty of Fisheries. (Fisheries laboratory was discontinued.) 		<ul style="list-style-type: none"> • The Department of Infectious Research was established in the Graduate School of Medical Sciences.
	<ul style="list-style-type: none"> • Tropical Information Center was established in the Institute of Tropical Medicine. (The reference Room for the Tropical Medicine was discontinued.) 		<ul style="list-style-type: none"> • Graduate School of Science and Technology was established.
10	<ul style="list-style-type: none"> • Faculty of Environmental Studies was established. 		<ul style="list-style-type: none"> • Gene Research Center was established.
	<ul style="list-style-type: none"> • Faculty of Liberal Arts was discontinued. 	2001 . 4	<ul style="list-style-type: none"> • Junior College of Commerce was discontinued.
	<ul style="list-style-type: none"> • The Departments of Economics, Business, and Finance of the Faculty of Economics were restructured to establish the Department of General Economics. 		<ul style="list-style-type: none"> • The Department of Marine Production and the Department of Marine Resource of the Graduate School of Marine Science and Engineering were reorganized into the Department of Marine Science and Technology and the Department of Material Science, respectively.
1998 . 4	<ul style="list-style-type: none"> • The Elementary School Teacher Training Course, Lower Secondary School Teacher Training Course, Disabled Children's School Teacher Training Course, and Kindergarten Teacher Training Course of the Faculty of Education were reorganized into the Teacher Education Division and the Information Technology and Cultural Studies Division. 		<ul style="list-style-type: none"> • Center for Education Research and Training was established. (Center for Practical Education Research and Training was discontinued.)

	<ul style="list-style-type: none"> • Research Center for Tropical Infectious Diseases was established in the Institute of Tropical Medicine. (Tropical Disease Information Center was discontinued.) • One large and 31 small divisions of the School of Medical Sciences, School of Medicine were reorganized into six large ones. 		
10	<ul style="list-style-type: none"> • The School of Health Sciences was established in the School of Medicine. 		
2002 . 4	<ul style="list-style-type: none"> • Graduate School of Environmental Studies was established. • Graduate School of Biomedical Sciences was established. • Research and Development Center for Higher Education was established. • Admission Center was established. • Six large divisions of the School of Medical Sciences, School of Medicine were reorganized into four large ones. • 18 small divisions of the Department of Dentistry, School of Dentistry were reorganized into three large ones. • Four large divisions of the Department of Pharmaceutical Sciences, School of Pharmaceutical Sciences were reorganized into two large ones. 	12	<ul style="list-style-type: none"> • The Departments of Policies for the Human-Environmental Symbiosis (Master's course), Environmental Conservation and Planning (Master's course), and Environmental Science (Doctoral course) were established in the Graduate School of Science and Technology. • The Diploma Course in the Faculty of Fisheries was discontinued. • Intellectual Property Center was established. • Information Media Center was established. (Information Science Center was discontinued) • Joint Research Center was established. (Joint Research Center, Center for Instrumental Analysis, and Environmental Protection Center were discontinued.)
		2005 . 4	<ul style="list-style-type: none"> • The Headquarters for Planning and Evaluation was established. • Center for International Collaborative Research was established. • Institute for East China Sea Research was established. (Marine Research Center, Faculty of Fisheries was discontinued.) • Center for Total Human Education and Child Welfare was established. (available for a limited time only) • School of Allied Medical Sciences was discontinued.
2003 . 4	<ul style="list-style-type: none"> • Atomic Bomb Disease Institute and the Medicinal Plant Garden were transferred from the School of Medicine to the Graduate School of Biomedical Sciences. • Center for Frontier Life Sciences was established. (Radioisotope Research Center, Gene Research Center, and Biomedical Research Center were discontinued.) 	2006 . 2	<ul style="list-style-type: none"> • The Department of Marine Science and Technology, Graduate School of Science and Technology was discontinued.
		4	<ul style="list-style-type: none"> • Master of Tropical Medicine and Master of Health Sciences were established in the Graduate School of Biomedical Sciences.
10	<ul style="list-style-type: none"> • University Hospital of Medicine and Dentistry were established (University Hospitals of the School of Medicine and the School of Dentistry were restructured). 		<ul style="list-style-type: none"> • The Department of Pharmacy, School of Pharmaceutical Sciences was reorganized into Pharmacy (six-year program) and Pharmaceutical Sciences (four-year program).
2004 . 4	<ul style="list-style-type: none"> • Nagasaki University was established by the Nagasaki University, National University Corporation under the National University Corporation Law. • The Department of Managerial Decision Making was established in the Graduate School of Economics (Doctoral course). 	5	<ul style="list-style-type: none"> • Graduate School of Dentistry was discontinued.
		7	<ul style="list-style-type: none"> • Nagasaki University Organization for Cooperation of Industry, University, and Government was established.
		2007 . 2	<ul style="list-style-type: none"> • Graduate School of Pharmaceutical Sciences was discontinued.

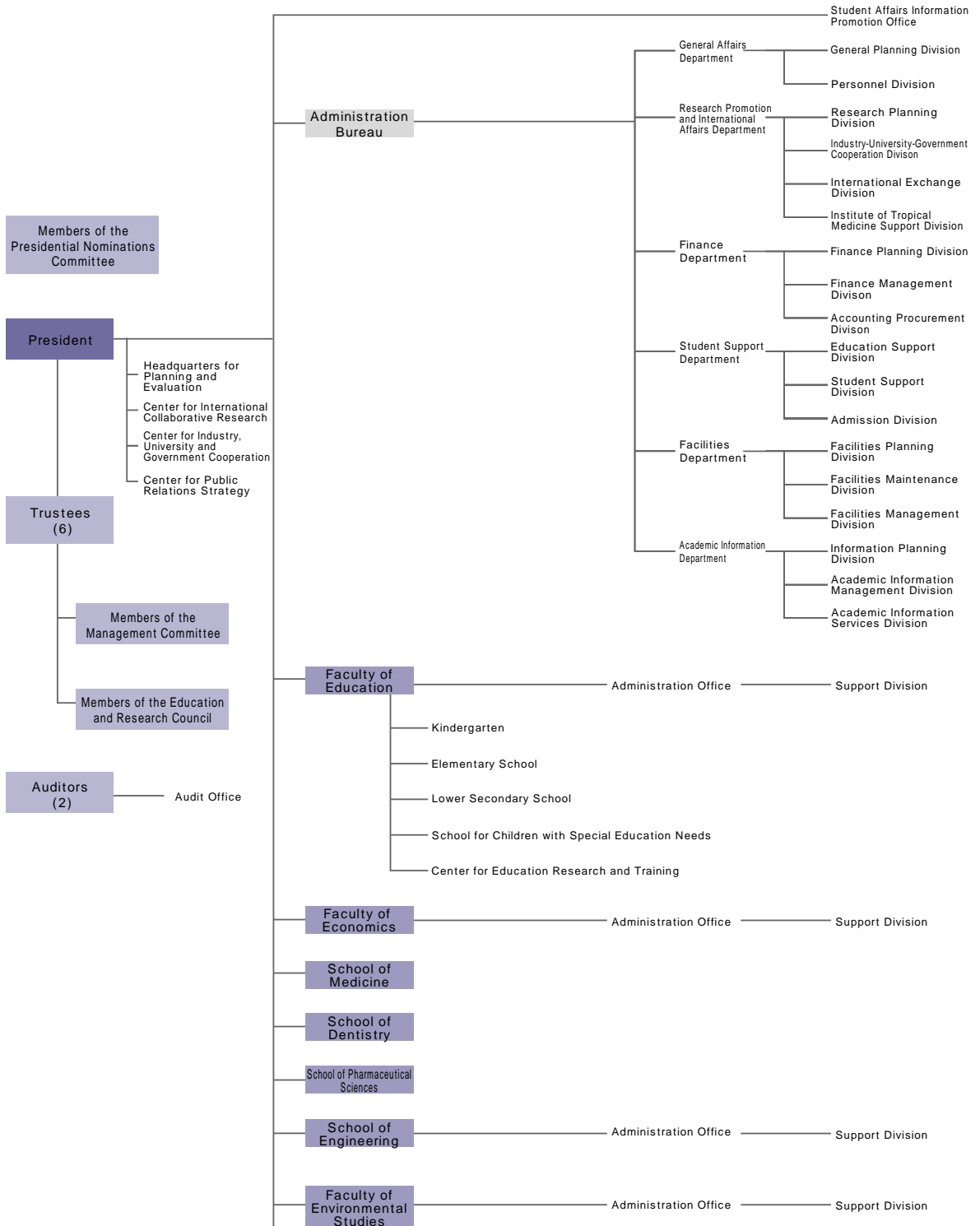
3	<ul style="list-style-type: none"> • Graduate School of Environmental Studies was discontinued. 	2011 . 4	<ul style="list-style-type: none"> • School of Engineering's seven Departments (Mechanical Systems Engineering, Electrical and Electronic Engineering, Computer and Information Sciences, Structural Engineering, Civil Engineering, Materials Science and Engineering, and Applied Chemistry) were restructured into one Department, Engineering.
2008 . 4	<ul style="list-style-type: none"> • The Information Technology and Cultural Studies Division of the Faculty of Education was merged into the Teacher Education Division. • The Department of Teaching Skills Development and Practice (Master's Course) and the Department of Teaching Training and Practice (Professional Degree Program) were established in the Graduate School of Education. • Graduate School of International Health Development was established. • Center for Infectious Disease Research in Asia and Africa and Tropical Medicine Museum were established in the Institute of Tropical Medicine. Research Center for Tropical Infectious Diseases was discontinued. • Health Center was reorganized into the Center for Health and Community Medicine. 		<ul style="list-style-type: none"> • Graduate School of Science and Technology was restructured to establish Graduate School of Engineering and Graduate School of Fisheries Science and Environmental Studies. • Institute of Tropical Medicine's three Departments were restructured into four Department • Institute for East China Sea Research was restructured to establish Institute for East China Sea Research affiliated with Graduate School of Fisheries Science and Environmental Studies. • Center for Total Human Education and Child Welfare was discontinued.
2009 . 4	<ul style="list-style-type: none"> • University Hospital of Medicine and Dentistry was restructured and renamed University Hospital. 	6	<ul style="list-style-type: none"> • Center for Industry, University and Government Cooperation was established. (Intellectual Property Center Joint Research Center and Education and Research Center for Lifelong Learning were discontinued.)
10	<ul style="list-style-type: none"> • Center for Gender Equality was established. (available for a limited time only) 	12	<ul style="list-style-type: none"> • Research Promotion Section was established.
2010 . 4	<ul style="list-style-type: none"> • Master's Course in Pharmaceutical Sciences was established in the Graduate School of Biomedical Sciences. • Center for Public Relations Strategy was established. • Center for International Collaborative Research Nagasaki University Tokyo Office was established. • Advanced Computing Center was established. 	2012 . 1	<ul style="list-style-type: none"> • Medical Innovation Center was established.
11	<ul style="list-style-type: none"> • Center for International Collaborative Research Nagasaki University Tokyo Office was restructured to establish Nagasaki University Tokyo Office. 	4	<ul style="list-style-type: none"> • Master and Doctoral courses of Pharmaceutical Sciences were established in the Graduated School of Biomedical Sciences. • The Graduate School of Medical Sciences closed. • Center for Language Studies was established. • Research Center for Nuclear Weapons Abolition was established.

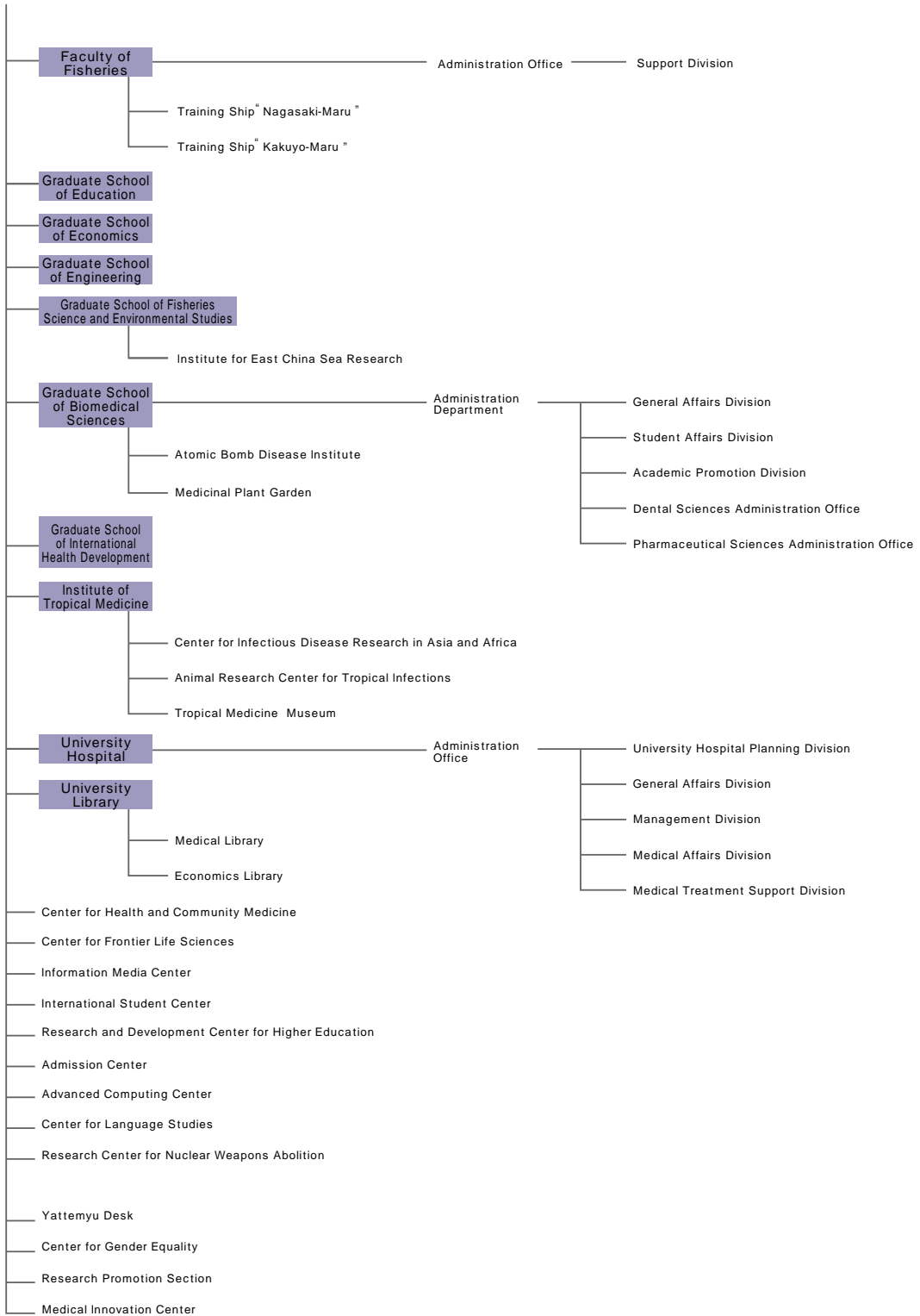


Organization

Organizational Chart

2012 . 5 . 1







Successive Presidents of Nagasaki University

1 st	Kiyoshi Takase	(June 29,1949 June 5,1952)
(Acting President)	Shingo Ikeda	(June 6,1952 November 17,1952)
2 nd	Kohei Koyano	(November 18,1952 November 17,1958)
3 rd	Seiichi Kitamura	(November 18,1958 November 17,1962)
4 th	Nariyuki Izumi	(November 18,1962 November 17,1966)
5 th	Toshiro Goto	(November 18,1966 April 3,1969)
(Acting President)	Michinori Kurihara	(April 4,1969 May 6,1969)
6 th	Masayuki Nakatsuka	(May 7,1969 July 31,1974)
(Acting President)	Masato Yasuda	(August 1,1974 October 10,1974)
7 th	Kanesaburo Gushima	(October 11,1974 October 10,1980)
8 th	Hideo Fukumi	(October 11,1980 October 10,1984)
9 th	Masato Yasuda	(October 11,1984 October 10,1988)
10 th	Hideo Tsuchiyama	(October 11,1988 October 10,1992)
11 th	Tetsuo Yokoyama	(October 11,1992 October 10,1998)
12 th	Takayoshi Ikeda	(October 11,1998 October 10,2002)
13 th	Hiroshi Saito	(October 11,2002 October 10,2008)
14 th	Shigeru Katamine	(October 11,2008 Present)

Board of Trustees	2012 . 5 . 1
--------------------------	--------------

Chairperson Shigeru Katamine	President
Sadao Torigoe	Trustee (General Affairs and Finance)
Tadashi Tojo	Trustee (Personnel and University Restructuring)
Tadashi Sakuma	Trustee (General Affairs)
Susumu Shirabe	Trustee (Research and Social Contribution)
Masayuki Susai	Trustee (International Affairs and Risk Management)
Shigeru Kohno	Trustee (Hospital)

Members of the Presidential Nominations Committee	2012 . 5 . 1
--	--------------

Chairperson Michitami Yano	Honorary Director National Hospital Organization Nagasaki Medical Center
Tadashi Tojo	Trustee (Personal and University Restructuring)
Susumu Shirabe	Trustee (Research and Social Contribution)
Hiroaki Yamaji	Dean, Faculty of Education
Toshihumi Matsuyama	Dean, School of Medicine
Yoshihiko Hayashi	Dean, School of Dentistry
Morio Nakayama	Dean, School of Pharmaceutical Sciences
Takakazu Ishimatsu	Dean, Graduate School of Engineering
Hideaki Nakata	Dean, Graduate School of Fisheries Science and Environmental Studies
Tatsuro Sakimoto	Director, Kumamoto Study Center The Open University of Japan
Hodo Nakamura	Governor of Nagasaki
Yoshiyuki Miyazaki	President, Keiho high school
Masatoshi Miyawaki	President, The Eighteenth Bank, Ltd .
Masayuki Murota	Deputy Director, Mitsubishi Heavy Industries, Ltd. Nagasaki Shipyard & Machinery Works Main Plant

Members of the Management Committee	2012 . 5 . 1
--	--------------

Chairperson Shigeru Katamine	President
Masayuki Susai	Trustee (International Affairs and Risk Management)
Shigeru Kohno	Trustee (Hospital)
Sadao Torigoe	Trustee (General Affairs and Finance)
Hiroaki Yamaji	Dean, Faculty of Education
Toshihumi Matsuyama	Dean, School of Medicine
Takakazu Ishimatsu	Dean, Graduate School of Engineering
Hideaki Nakata	Dean, Graduate School of Fisheries Science and Environmental Studies
Takehiko Koji	Dean, Graduate School of Biomedical Sciences
Tsutomu Takeuchi	Dean, Institute of Tropical Medicine
Yuichiro Anzai	President, Japan Society for the Promotion of Science
Kiyoko Ikegami	Professor at the Graduate School of Nihon University

Tatsuro Sakimoto	Director, Kumamoto Study Center the Open University of Japan
Yoshiko Shiotani	President, Special Olympics Nippon Kumamoto
Ryoki Sugita	Chairman, Japan Center for Economic Research
Hodo Nakamura	Governor of Nagasaki
Yoshiyuki Miyazaki	President, Keiho high school
Masatoshi Miyawaki	President, The Eighteenth Bank, Ltd.
Masayuki Murota	Deputy Director, Mitsubishi Heavy Industries, Ltd. Nagasaki Shipyard & Machinery Works Main Plant
Michitami Yano	Honorary Director National Hospital Organization Nagasaki Medical Center

Members of the Education and Research Council

2012 . 5 . 1

Chairperson Shigeru Katamine	President
Tadashi Tojo	Trustee (Personal and University Restructuring)
Tadashi Sakuma	Trustee (General Affairs)
Susumu Shirabe	Trustee (Research and Social Contribution)
Masayuki Susai	Trustee (International Affairs and Risk Management)
Shigeru Kohno	Trustee (Hospital)
Hiroaki Yamaji	Dean, Faculty of Education
Hiromasa Okada	Dean, Faculty of Economics
Toshifumi Matsuyama	Dean, School of Medicine
Yoshihiko Hayashi	Dean, School of Dentistry
Morio Nakayama	Dean, School of Pharmaceutical Sciences
Akihiro Taimura	Dean, Faculty of Environmental Studies
Katsuyasu Tachibana	Dean, Faculty of Fisheries
Takakazu Ishimatsu	Dean, Graduate School of Engineering
Hideaki Nakata	Dean, Graduate School of Fisheries Science and Environmental Studies
Takehiko Koji	Dean, Graduate School of Biomedical Sciences
Yoshiki Aoki	Dean, Graduate School of International Health Development
Tsutomu Takeuchi	Dean, Institute of Tropical Medicine
Junichi Himeno	Director, University Library
Toshiaki Inada	Director, Center for Language Studies
Sadao Torigoe	Director-General, Administration Bureau
Nobuo Matsusaka	Dean, School of Health Sciences, School of Medicine
Hirohichi Umabayashi	Director, Research Center for Nuclear Weapons Abolition



Board Members and Faculty/Administrative Staff

Board Members	
President	Shigeru Katamine
Trustee (General Affairs and Finance)	Sadao Torigoe
Trustee (Personal and University Restructuring)	Tadashi Tojo
Trustee (General Affairs)	Tadashi Sakuma
Trustee (Research and Social Contribution)	Susumu Shirabe
Trustee (International Affairs and Risk Management)	Masayuki Susai
Trustee (Hospital) - Director, University Hospital	Shigeru Kohno
Auditor	Shoji Fukushima
Auditor (Part time)	Takamitsu Sato
Vice Presidents	
Personal System Reform	Tadashi Tojo
Educational Affairs	Tadashi Sakuma
Regional Partnership	Susumu Shirabe
Global Human Resource Development	Masayuki Susai
Public Relations	Norio Fukao
Information	Hiroshi Matsuda
Student Affairs	Ibuki Horiuchi
Admission	Yasuhiro Yamaguchi
Research Planning	Koji Nakayama
Industry-University Cooperation - Environment - Facilities	Takahiko Yamashita
Life Innovation	Susumi Hatakeyama
Special Aide to the President	
Gender Equality	Kumiko Oi
Regional Education Service	Tateo Hashimoto
Headquarters for Planning and Evaluation	
Director	Shigeru Katamine
Center for International Collaborative Research	
Director (Acting Director)	Yoshiki Aoki
Center for Industry, University and Government Cooperation	
Director	Takahiko Yamashita
Center for Public Relations Strategy	
Director	Norio Fukao
Audit Office	
Director	Yo Kanai

Student Affairs Information Promotion Office	
Director	Tadashi Sakuma
Administration Bureau	
Director-General, Administration Bureau	Sadao Torigoe
Director, General Affairs Department	Hiroaki Goto
Director, General Planning Division	Takashi Yashima
Personnel Division	Masakazu Shigyo
Director, Research Promotion and International Affairs Department	Hiroshi Kawano
Director, Research Planning Division	Takashi Tsujiyama
Industry-University-Government Cooperation Division	Yoshihide Moriyama
Director, International Exchange Division	Teruaki Sato
Director, Institute of Tropical Medicine Support Division	Masazumi Izumikawa
Director, Finance Department	Toshimitsu Ezaki
Director, Finance Division	Osamu Ichikawa
Director, Accounting Division	Kazunori Kokado
Director, Procurement Division	Kenji Urakawa
Director, Student Support Department	Hiroyuki Nakamura
Director, Education Support Division	Mina Kawano
Director, Student Support Division	Keiichi Yamano
Director, Admission Division	Toshio Miyahara
Director, Facilities Department	Yuichi Miyaura
Director, Facilities Planning Division	Noriaki Mori
Director, Facilities Maintenance Division	Yasushi Yamanaka
Director, Environmental Maintenance Division	Katsuhiro Matsumura
Director, Academic Information Department	Chikao Sugahara
Director, Information Planning Division	Tsunenobu Ueno
Director, Academic Information Management Division	Kanichiro Kanai
Director, Academic Information Services Division	Minoru Ogawa
Faculties and Schools	
Faculty of Education	
Dean, Faculty of Education	Hiroaki Yamaji
Director, Faculty of Education Support Division	Ryosuke Mori
Principal, Kindergarten	Michiko Motoda
Principal, Elementary School	Kazutaka Abe
Principal, Lower Secondary School	Shinjiro Kazama
Principal, School for Children with Special Education Needs	Hidetoshi Ikeda
Director, Center for Education Research and Training	Keisuke Sato

Faculty of Economics

Dean, Faculty of Economics	Hiromasa Okada
Director, Faculty of Economics Support Division	Tadaichi Maeda

School of Medicine

Dean, School of Medicine	Toshifumi Matsuyama
--------------------------	---------------------

School of Dentistry

Dean, School of Dentistry	Yoshihiko Hayashi
---------------------------	-------------------

School of Pharmaceutical Sciences

Dean, School of Pharmaceutical Sciences	Morio Nakayama
---	----------------

School of Engineering

Dean, School of Engineering	Takakazu Ishimatsu
Director, School of Engineering Support Division	Toru Hashida

Faculty of Environmental Studies

Dean, Faculty of Environmental Studies	Akihiro Taimura
Director, Faculty of Environmental Studies Support Division	Shuzo Nakamura

Faculty of Fisheries

Dean, Faculty of Fisheries	Katsuyasu Tachibana
Director, Faculty of Fisheries Support Division	Yoshinori Yokoyama
Captain, Training Ship" Nagasaki-Maru "	Hisao Kanehara
Captain, Training Ship" Kakuyo-Maru "	Yasuhiro Morii

Graduate Schools

Dean, Graduate School of Education	Hiroaki Yamaji
Dean, Graduate School of Economics	Tadaichi Maeda
Dean, Graduate School of Engineering	Takakazu Ishimatsu
Dean, Graduate School of Fisheries Science and Environmental Studies	Hideaki Nakata
Director, Institute for East China Sea Research	Kiyoshi Soyano
Dean, Graduate School of Science and Technology	Takakazu Ishimatsu
Dean, Graduate School of Biomedical Sciences	Takehiko Koji
Director, Administration Department	Satoshi Matsubayashi
Director, General Affairs Division	Chikara Sakaguchi
Director, Student Affairs Division	Toshiro Hamano
Director, Academic Promotion Division	Ryoji Terahara
Director, Dental Sciences Administration Office	Tetsuro Tokunaga
Director, Pharmaceutical Sciences Administration Office	Toshihiko Hamamoto
Director, Atomic Bomb Disease Institute	Yuji Nagayama
Director, Medicinal Plant Garden	Morio Nakayama
Dean, Graduate School of International Health Development	Yoshiki Aoki

University Research Institutes

Dean, Institute of Tropical Medicine	Tsutomu Takeuchi
Director, Center for Infectious Disease Research in Asia and Africa	Tsutomu Takeuchi
Director, Animal Research Center for Tropical Infections	Shinjiro Hamano
Director, Tropical Medicine Museum	Noboru Minakawa

University Hospital

Director, University Hospital	Shigeru Kohno
Director, Administration Department	Kazutoshi Maruno
Director, Management and Planning Division	Takuji Shirabe
Director, General Affairs Division	Humiaki Onishi
Director, Procurement Management Division	Hiroyuki Yamada
Director, Medical Affairs Division	Kotaro Sakai
Director, Patient Services Office	Hiroshi Hamamura
Director, Pharmaceutical Department	Hitoshi Sasaki
Director, Nursing Department	Eiko Sato

University Library

Director, University Library	Junichi Himeno
Director, Medical Library	Nozomu Mori
Director, Economics Library	Takatsugu Akaishi

Center for Health and Community Medicine

Director, Center for Health and Community Medicine	Susumu Shirabe
--	----------------

Faculty-affiliated Institutes for Education and Research

Director, Center for Frontier Life Sciences	Koji Nakayama
Director, Information Media Center	Hiroshi Matsuda
Director, International Student Center	Masayuki Susai
Director, Research and Development Center for Higher Education	Tadashi Sakuma
Director, Admission Center	Yasuhiro Yamagushi
Director, Advanced Computing Center	Susumi Hatakeyama
Director, Center for Language Studies	Toshiaki Inada
Director, Research Center for Nuclear Weapons Abolition	Hirromichi Umebayashi

Yattemyu Desk

Director	Ibuki Horiuchi
----------	----------------

Center of Gender Equality

Director	Kumiko Oi
----------	-----------

Medical Innovation Center

Director	Susumi Hatakeyama
----------	-------------------

Shimabara Joint Training Center for National Universities in Kyushu Area

Director	Ibuki Horiuchi
----------	----------------



Number of Board Members and Faculty/Administrative Staff

2012 . 5 . 1

Board Members, etc. Faculties, etc.	Board Members			Faculty Staff							Sub Total	Admin istrative Staff	Total		
	President	Trustees	Auditors	Vice Presidents	Special Aide to the President	Professors	Associate Professors	Senior Assistant Professors	Assistant Professors	Research Associates				School teachers	
Headquarters for Planning and Evaluation															
Center for International Collaborative Research						3		1	4			8	9	17	
Center for Public Relations Strategy						1						1	4	5	
Center for Industry, University and Government Cooperation						3	5		4			12	7	19	
Audit Office													3	3	
Administration Bureau	1	6	(1)	1	[11]	2						(11)	2	232 ⁽¹⁾ 240	
Faculty of Education						38	23	1	1			63	11	74	
Kindergarten											7	7	1	8	
Elementary School											30	30	2	32	
Lower Secondary School											25	25	1	26	
School for Children with Special Education Needs											29	29	2	31	
Center for Education Research and Training						2						2		2	
Faculty of Economics						27	24	2	1			54	16	70	
School of Engineering													11	11	
Faculty of Environmental Studies													7	7	
Faculty of Fisheries													10	10	
Training Ship "Nagasaki-Marui"						1	2		1			4	18	22	
Training Ship "Kakuyo-Marui"							2		1			3	12	15	
Graduate School of Education						5	4					9		9	
Graduate School of Engineering						45	40		33	1		119	40	159	
Graduate School of Fisheries Science and Environmental Studies						45	39	1	3			88		88	
Institute for East China Sea Research						3	2		1			6		6	
Graduate School of Biomedical Sciences						91	70	22	144			327	80	407	
Atomic Bomb Disease Institute						8	4	1	17			30	3	33	
Medicinal Plant Garden							1					1		1	
Graduate School of International Health Development						3	1		1			5		5	
Institute of Tropical Medicine						15	6	2	25	1		49	4	53	
Center for Infectious Disease Research in Asia and Africa						2			1			3		3	
Animal Research Center for Tropical Infections										1		1		1	
Tropical Medicine Museum						1						1		1	
University Hospital						4	15	57	156			232	1,161	1,393	
Center for Health and Community Medicine						1	4		1			6	11	17	
Center for Frontier Life Sciences						2	1		3			6	5	11	
Information Media Center						3	2		1			6		6	
International Student Center						2	4					6		6	
Research and Development Center for Higher Education						2	2					4		4	
Admission Center							2		1			3		3	
Advanced Computing Center							1		1			2		2	
Center for Language Studies						5	2	2	3			12		12	
Research Center for Nuclear Weapons Abolition						3	1					4		4	
Center for Gender Equality						1						1	2	3	
Yattemyu Desk							1					1		1	
Total	1	6	(1)	1	[11]	2	316	258	89	403	3	91	(11)	2	1,652

1 Auditor (1) is a part-time staff member, and is excluded from the total. Vice Presidents and Special Assistant to the President double as Faculty members or Trustees, and [] indicates the number of them included in count.



Education and Research

Faculties and Schools

Faculty	Divisions	Departments
Faculty of Education 1 Division 6 Departments	Teacher Education Division	Department of Intercultural Studies Department of Art Expression Department of Education and Psychology Department of Natural Science Department of Life and Health Department of Elementary Education
Faculty of Economics 1 Department 6 Divisions	General Economics	Economics and Econometrics Regional Economics and Policy Economic Cooperation & International Communication Financial Systems Corporate Behavior & Decision Making Business Management & Accounting
School of Medicine 2 Departments 7 Divisions	School of Medical Sciences	Structure-Function-Metabolism Therapeutic Medicine
	School of Health Sciences	Pathophysiologic Analysis Preventive Medicine Nursing Occupational Therapy Physical Therapy
School of Dentistry 1 Department 3 Divisions	Dentistry	Oral and Maxillofacial Life Sciences Oral and Maxillofacial Environmental Sciences Oral and Maxillofacial Regenerative Medical Sciences
School of Pharmaceutical Sciences 2 Departments 4 Divisions	Pharmacy	Basic Pharmacy Medical Pharmacy
	Pharmaceutical Sciences	Basic Pharmaceutical Sciences Applied Pharmaceutical Sciences
School of Engineering 1 Department 6 Programs	Engineering	Mechanical Engineering Program Electrical and Electronic Engineering Program Computer and Information Science Program Structural Engineering Program Civil and Environmental Engineering Program Chemistry and Materials Engineering Program
Faculty of Environmental Studies 1 Department 2 Divisions	Environmental Studies	Human and Social Environment Environmental Conservation and Planning
Faculty of Fisheries 1 Department 4 Divisions	Fisheries	Systematic Fisheries Science Marine Biology and Dynamics Marine Life Science and Biochemistry Marine Material Science

Graduate Schools

Graduate School	Course	Departments
Graduate School of Education	Master's Course	Department of Teaching Skills Development and Practice
	Professional Degree Program	Department of Teacher Training and Practice
Graduate School of Economics	Master's Course	Policy Studies in Economics and Management
	Doctoral Course	Managerial Decision Making
Graduate School of Engineering	Master's Degree	Department of Advanced Engineering
	Doctoral Degree (3 Year Program)	Department of Science and Technology
	Doctoral Degree (5 Year Program)	Department of Advanced Technology and Science for Sustainable Development
Graduate School of Fisheries Science and Environmental Studies	Master's Program	Department of Fisheries Science Department of Policies for Human-Environmental Symbiosis Department of Environmental Conservation and Planning
	Doctoral Program	Department of Environment and Fisheries Resources
	Doctoral Program (5 Year Doctoral Program)	Department of Marine Science
Graduate School of Science and Technology	Master's Course	Mechanical Systems Engineering Electrical Engineering and Computer Science Civil and Structural Engineering Materials Engineering and Molecular Science Fisheries Science Policies for Human-Environmental Symbiosis Environmental Conservation and Planning
	Doctoral Course	Systems Science Marine Science and Technology Materials Science Environmental Science
Graduate School of Biomedical Sciences	Master's Course	Tropical Medicine Health Sciences
	Doctoral Course	Medical and Dental Sciences Infection Research Life Sciences and Radiation Research
	Master's Course	Pharmaceutical Sciences
	Doctoral Course	Pharmaceutical Sciences
Graduate School of International Health Development	Master's Course	International Health Development

Academic Calendar

4 April	1 3	First Day of Academic Year Entrance Ceremony	10 October	1	First Day of Second Semester
5 May	31	University Foundation Day	11 November	23 ~ 24	School Festival
6 June			12 December	12 / 28 ~ 1 / 3 Winter Break	
7 July			1 January		
8 August	8 / 13 ~ 9 / 30 Summer Break		2 February		
9 September			3 March	3 / 21 ~ 4 / 4 Spring Break 25 Commencement Ceremony 31 Last Day of Academic Year	



University Facilities

University Research Institute: Institute of Tropical Medicine

Research Fields (Departments)	Mission Statements
Microbiology and Parasitology Virology, Emerging Infectious Diseases, Bacteriology, Protozoology, Parasitology, Molecular Epidemiology Host and Vector Biology Immunogenetics, Host-Defense Biochemistry, Pathology, Preventive Medicine and AIDS Research Public and Environmental Health Eco-epidemiology, International Health, Global Health Development Policy Sciences, Vector Ecology and Environment Clinical Medicine and Research Clinical Medicine, Pediatric Infectious Diseases, Clinical Product Development	<ol style="list-style-type: none"> 1 . Spear-head research in tropical medicine and international health 2 . Global contribution through disease control and health promotion in the tropics by applying the fruits of the research 3 . Cultivation of researchers and specialists in the above fields

University Library

Holdings

2012 .4 .1

Libraries	Books			Periodicals		
	Japanese & Chinese	Others	Total	Japanese	Others	Total
Central Library	419,201	132,534	551,735	11,892	3,375	15,267
Medical Library	82,878	75,608	158,486	3,615	3,245	6,860
Economics Library	187,895	82,245	270,140	2,964	1,103	4,067
Total	689,974	290,387	980,361			

Use of Library

2012 .3 .31

Libraries	Visitors, etc.	University Staff	Students	Others	Total
Central Library	Visitors	353,715		13,641	367,356
	Volumes lent	3,731	43,502	1,624	48,857
Medical Library	Visitors	99,726		3,016	102,742
	Volumes lent	1,539	11,417	1,044	14,000
Economics Library	Visitors	65,200		640	65,840
	Volumes lent	1,316	10,328	65	11,709
Total	Visitors	518,641		17,297	535,938
	Volumes lent	6,586	65,247	2,733	74,566

University Hospital (FY 2011)

Number of Patients by Department

Departments, etc.	Inpatients		Outpatients	
	Total Number of Patients	Daily Average of Patients	Total Number of Patients	Daily Average of Patients
Endocrinology and Metabolism	3,115	8.5	12,749	52.3
Gastroenterology and Hepatology	23,219	63.4	19,188	78.6
Immunology and Rheumatology	6,661	18.2	10,609	43.5
Neurology	5,818	15.9	7,545	30.9
Respiratory Medicine	17,083	46.7	12,775	52.4
Nephrology	4,228	11.6	7,285	29.9
Cardiovascular Medicine	14,942	40.8	15,820	64.8
Hematology	14,587	39.9	8,758	35.9
Infectious Diseases		0.0	381	1.6
General Thoracic Surgery	4,320	11.8	2,311	9.5
Digestive Surgery I	11,825	32.3	4,484	18.4
Digestive Surgery II	15,225	41.6	5,851	24.0
Urology	11,249	30.7	17,114	70.1
Cardiovascular Surgery	9,307	25.4	3,657	15.0
Breast and Endocrine Surgery	3,242	8.9	7,291	29.9
Neurosurgery	11,204	30.6	8,159	33.4
Ophthalmology	10,799	29.5	20,075	82.3
Otolaryngology-Head and Neck Surgery	9,628	26.3	15,121	62.0
Dermatology and Allergology	8,057	22.0	17,926	73.5
Plastic and Reconstructive Surgery	8,546	23.3	6,588	27.0
Orthopedic Surgery	17,155	46.9	16,491	67.6
Pediatrics	13,506	36.9	14,730	60.4
Pediatric Surgery	3,441	9.4	2,852	11.7
Obstetrics and Gynecology	20,189	55.2	14,875	61.0
Neuropsychiatry	13,645	37.3	18,845	77.2
Radiology	6,789	18.5	9,594	39.3
Anesthesiology	64	0.2	9,898	40.6
General Medicine	2,449	6.7	5,020	20.6
International Hibakusha Medical Center	186	0.5	1,535	6.3
Emergency and Critical Care Centre	4,420	12.1	5,027	20.6
Department of Metabolism / Diabetes and Clinical Nutrition		0.0	2,519	10.3
Subtotal	274,899	751	305,073	1,251

Patients		Inpatients		Outpatients	
		Total Number of Patients	Daily Average of Patients	Total Number of Patients	Daily Average of Patients
Departments, etc.					
Department of General Dentistry	Preventive Dentistry			65,357	267.9
	Orthodontics				
	Pediatric Dentistry				
	Cariology				
	Periodontics				
	Fixed Prosthesis Denture Prosthesis				
Department of Oral and Maxillofacial Surgery	Oral and Maxillofacial Surgery	4,270	11.7	10,702	43.9
	Regenerative Oral Surgery	3,457	9.4	9,904	40.6
Department of Radiology and Anesthesiology	Head and Neck Radiology	69	0.2	736	3.0
	Anesthesiology and Clinical Physiology				
Special Care Dentistry				5,931	24.3
Medical Education Development Center				5,726	23.5
Clinic for Oral Health Care and Dysphagia Rehabilitation				7,474	30.6
Center for Oral and Maxillofacial Implants		67	0.2	3,996	16.4
Subtotal		7,863	22	109,826	450
Total		282,762	773	414,899	1,701

Number of days hospitalized = 366 days, Number of days open for practice = 244 days

Schools and Kindergarten Affiliated with the Faculty of Education

Affiliated Schools

2012 .5 .1

Schools	Type of Class	Grade		Number of Classes	Admission Capacity	Enrollment Capacity	Enrollment	
Kindergarten		3-year-olds	3-year program	1	20	20	24	
		4-year-olds	2-year program	2	40	60	36	
			3-year program		20		24	
		5-year-olds	2-year program	2	40	60	36	
			3-year program		20		24	
		Total				5		140
Elementary School	Ordinary Class		1	3	30	90	90	
			2	3	30	90	89	
			3	3	30	90	89	
			4	3	40	120	90	
			5	3	40	120	105	
			6	3	40	120	99	
	Combined Class		1	1	16	16	8	
			2				8	
			3				8	
			4				8	
			5				8	
			6				8	
	Total				21		678	610
	Lower Secondary School	Ordinary Class		1	4	35	140	144
			2	4	35	140	143	
			3	4	35	140	143	
Total				12		420	430	
School for Children with Special Education Needs	Ordinary Class (Combined class of successive grades)	Elementary School	1	1	6	18	1	
			2				2	
			3				2	
			4				3	
			5				4	
			6				2	
	Ordinary Class	Lower Secondary School	1	1	6	18	6	
			2	1	6		6	
			3	1	6		5	
	Ordinary Class	Secondary School	1	1	8	24	8	
			2	1	8		8	
			3	1	8		8	
	Total				9		60	55

Faculty-affiliated Institutes for Education and Research

Faculty of Education

Center for Education Research and Training

Faculty of Fisheries

Training Ship Nagasaki-maru

Training Ship Kakuyo-maru

Institute of Tropical Medicine

Center for Infectious Disease Research in Asia and Africa

Animal Research Center for Tropical Infections

Tropical Medicine Museum

Graduate School of Fisheries Science and Environmental Studies

Institute for East China Sea Research

Graduate School of Biomedical Sciences

Atomic Bomb Disease Institute

Medicinal Plant Garden

Center for Health and Community Medicine

2012 . 5 . 1 (the number of person)

Number of Staff	Director	Professor	Associate Professor	Assistant Professor	Public Health Nurse	Counsellor	Administrative Staff	Total	Clinical departments where University doctors make diagnoses				
									Internal Medicine	Dermatology	Obstetrics and Gynecology	Ophthalmology	Dentistry
	[1]	1	4	1	3	6	2	17 [1]	4	1	1	1	1

Remarks Center for Health and Community Medicine (Consultation Day)...Monday through Friday
Sakamoto Branch (Consultation Day).....Monday & Friday
(NOTE) Other department's staff member doubles as administrative staff [1], and is excluded from the total.

University Institutes for Education and Research

Center for Frontier Life Sciences

Radioisotope Research Center

Biomedical Research Center

Gene Research Center

Information Media Center

International Student Center

Research and Development Center for Higher Education

Admission Center

Advanced Computing Center

Center for Language Studies

Research Center for Nuclear Weapons Abolition

Yattemyu Desk

Center for Gender Equality

Research Promotion Section

Medical Innovation Center



Distinctive Education and Research

Distinctive Research

Global COE Program

Integrated Global Control Strategy for the Tropical and Emerging Infectious Diseases

FY	Researcher in Charge	Field of Research	Program Title
FY 2008 ~ FY 2012	Dr. Kenji Hirayama Institute of Tropical Medicine	Medical Sciences	Integrated Global Control Strategy for Tropical and Emerging Infectious Diseases

Strategic Funds for the promotion of Science and Technology of the Ministry of Education, Culture, Sports, Science and Technology (MEXT) Program for the Strategic Promotion of International Cooperation to Accelerate Innovation in Developing Countries

FY	Title
FY 2012 ~ FY 2016	Establishment of an innovative biomedical research platform in Africa for a diagnostic technology development of concurrent multiple infectious diseases, a broad and comprehensive surveillance system and an integrated health strategy of the infectious diseases

Funds for the Development of Human Resources in Science and Technology of the Ministry of Education, Culture, Sports, Science and Technology (MEXT)

FY	Program
FY 2011 ~ FY 2015	Improvement of Research Environment for Young Researchers

MEXT Subventions for Regional Industry-Academic-Government Cooperation in the Promotion of Science and Technology

FY	Program
FY 2011 ~ FY 2015	Regional Innovation Strategy Support Program

Distinctive Education

■ : Programs currently receiving subsidies from the Ministry of Education, Culture, Sports, Science and Technology

■ : Programs for which subsidies from the Ministry of Education, Culture, Sports, Science and Technology have ended.

Program for Promoting High-Quality University Education

Title	Managing Body	FY
Training Platform Construction for Resident Education	School of Medicine	2008 ~ 2010

Support Program for Distinctive University Education

Title	Managing Body	FY
Medical Educational Program in Cooperation with Local Communities	School of Medicine	2004 ~ 2007
Performance and Improvement of the Distinctive First-year Education: Establishing an Education Management Cycle	Entire University	2003 ~ 2006
Program to Foster the Monodukuri (design) Ability among Undergraduate Students in the Education Center for Engineering and Technology (Niigata University <Representative university> Nagasaki University and one other university <Partner university>)	School of Engineering	2003 ~ 2006

Support Program for Contemporary Educational Needs

Title	Managing Body	FY
Development of Harmony in the Community through PAT Program	Faculty of Education	2007 ~ 2009
Program to Train Cosmopolitan Students with the Dejima Spirit through NAGASAKI RANGAKU Renaissance	Entire University	2006 ~ 2008
Program to Foster Engineers for the Enhancement of a Sound Society	School of Engineering	2006 ~ 2008

Student Support Program Corresponding to New Social Needs

Title	Managing Body	FY
Program to Develop Human Relations by Students Themselves	Entire University	2007 ~ 2010

Program for Enhancing Systematic Education in Graduate Schools

Title	Managing Body	FY
Training of tropical infectious disease specialists by means of international collaborative efforts	Graduate School of Biomedical Sciences	2009 ~ 2011
Professional Training Program for Emerging Financial Market Analysis	Graduate School of Education	2008 ~ 2010
Master of Public Health with Specialization in International Health	Graduate School of International Health Development	2008 ~ 2010

Initiatives for Attractive Education in Graduate Schools

Title	Managing Body	FY
Education Program of Researchers for Restoration of Marine Environment and Resources	Graduate School of Science and Technology	2005 ~ 2006
Program to Foster International Researchers and Doctors Specialized in Infectious Diseases	Graduate School of Biomedical Sciences	2005 ~ 2006

Re-Inventing Japan Project

Title	Managing Body	FY
Japan-China-Korea intercollegiate cooperative Project to Foster Leading Water Environment Engineers	Graduate School of Engineering	2010 ~ 2014

Promotion for Well-Qualified Teacher Training Program

Title	Managing Body	FY
Program to Foster Highly Competent Teachers Who Can Deal with Various Education Issues in the Present Society	Graduate School of Education	2006 ~ 2007

Strategic University Cooperative Support Program for Improving Graduate

Title	Managing Body	FY
Formation of a strategic base for the integrated education of pharmacy and nursing science specially focused on home-healthcare and welfare (Nagasaki University <representative university> University of Nagasaki and one other University <Partner university>)	School of Pharmaceutical Sciences	2009 ~ 2011

Professional Training Plan for Oncologists

Title	Managing Body	FY
Kyushu Cancer Professional Training Plan (Kyushu University <Representative university> Nagasaki University and eleven other universities <Partner university>)	Graduate School of Biomedical Sciences	2007 ~ 2011

Program for the Advancement of Perinatal Care (NICU Establishment)

Title	Managing Body	FY
Project for the improvement of the conditions of perinatal care (NICU, etc.), Nagasaki University	University Hospital	2009 ~ 2012

Development of Prominent Medical Specialists by Mutual Cooperation between Hospitals

Title	Managing Body	FY
Senior Residency Programs for Medical Doctors in Nagasaki and Saga prefectures (Nagasaki University <Representative university> Saga University and seven other universities <Partner university>)	University Hospital	2008 ~ 2012
Training program of Medical Specialists (Toyama University <Representative university> Nagasaki University and twenty-one other universities <Partner university>)	University Hospital	2008 ~ 2012
(University of the Ryukyus <Representative university> Nagasaki University and twenty-seven other universities <Partner university>)	University Hospital	2008 ~ 2012

Community Health Care Education and Support Program for Medical Professionals

Title	Managing Body	FY
Program for Resident Education and Revitalization of Rural Community Hospitals	University Hospital	2005 ~ 2007

Promotion for Well-Qualified Medical Professional Training Program in Coe

Title	Managing Body	FY
Project to Help Female Doctors on Child-care Leave Get Back to Work as Anesthesiologists	University Hospital	2006 ~ 2008



Number of Students, etc.

Number of Students

2012 . 5 . 1

Faculties and Schools

(the number of person)

Faculties, etc.	Departments · Divisions		Admission Capacity (freshmen only)	Transfer Student Capacity	Enrollment Capacity (all students from freshmen to seniors)	Enrollment						Total
						1 st year	2 nd year	3 rd year	4 th year	5 th year	6 th year	
Faculty of Education	Teacher Education Division		240	-	960	240	251	246	270	-	-	1,007
	Information Technology and Cultural Studies Division		-	-	-	-	-	-	2	-	-	2
	Sub Total		240	-	960	240	251	246	272	-	-	1,009
Faculty of Economics	General Economics	Day Course	355	-	1,420	368	366	367	480	-	-	1,581
		Evening- centered Course	60	-	240	57	59	62	97	-	-	275
			-	15	30	-	-	-	-	-	-	-
	Sub Total		415	15	1,690	425	425	429	577	-	-	1,856
School of Medicine	School of Medical Sciences		116	5	662	117	128	122	103	98	108	676
	School of Health Sciences		106	14	452	109	104	126	117	-	-	456
	Sub Total		222	19	1,114	226	232	248	220	98	108	1,132
School of Dentistry	Dentistry		50	-	310	50	56	55	41	57	49	308
School of Pharmaceutical Sciences	Pharmacy		40	-	240	40	41	40	40	41	41	243
	Pharmaceutical Sciences		40	-	160	43	48	36	42	-	-	169
	Sub Total		80	-	400	83	89	76	82	41	41	412
School of Engineering	School of Engineering		380	-	760	405	408	-	-	-	-	813
	Mechanical Systems Engineering		-	-	160	-	-	82	108	-	-	190
	Electrical and Electronic Engineering		-	-	160	-	-	87	108	-	-	195
	Computer and Information Sciences		-	-	100	-	-	51	72	-	-	123
	Structural Engineering		-	-	80	-	-	44	51	-	-	95
	Civil Engineering		-	-	100	-	-	52	62	-	-	114
	Materials Science and Engineering		-	-	100	-	-	50	77	-	-	127
	Applied Chemistry		-	-	100	-	-	57	59	-	-	116
	Subjects Required for All Departments		-	10	20	-	-	-	-	-	-	-
	Sub Total		380	10	1,580	405	408	423	537	-	-	1,773
Faculty of Environmental Studies	Environmental Studies		140	10	580	144	141	146	194	-	-	625
Faculty of Fisheries	Fisheries		110	-	440	116	117	109	146	-	-	488
Total			1,637	54	7,074	1,689	1,719	1,732	2,069	196	198	7,603

Graduate Schools

(the number of person)

Admission Capacity· Enrollment	Master's Course						Doctoral Course						
	Admission Capacity	Enrollment Capacity	1 st year	2 nd year	3 rd year	Total	Admission Capacity	Enrollment Capacity	1 st year	2 nd year	3 rd year	4 th year	Total
Graduate School of Education	18	36	20	14	-	34	-	-	-	-	-	-	-
Graduate School of Economics	15	30	14	13	-	27	3	9	3	3	6	-	12
Graduate School of Engineering	200	400	224	202	-	426	15	30	18	13	-	-	31
Graduate School of Fisheries Science and Environmental Studies	60	120	54	57	-	111	17	34	18	14	-	-	32
Graduate School of Science and Technology	-	-	-	20	-	20	-	48	-	8	60	-	68
Graduate School of Biomedical Sciences	68	116	74	50	-	124	100	406	116	103	105	208	532
Graduate School of International Health Development	10	20	10	12	-	22	-	-	-	-	-	-	-
Total	371	722	396	368	-	764	135	527	155	141	171	208	675

Admission Capacity· Enrollment	Professional Degree Program					
	Admission Capacity	Enrollment Capacity	1 st year	2 nd year	3 rd year	Total
Graduate School of Education	20	40	21	17	2	40
Total	20	40	21	17	2	40

Research Students, Special Register Students, etc.

(the number of person)

Faculties, etc.	Students			
	Research Students	Special Register Students	Special Audit Students	Special Research Students
Faculty of Education· Graduate School of Education	6	17	31	1
Faculty of Economics· Graduate School of Economics	11		14	
School of Medicine				
School of Dentistry				
School of Pharmaceutical Sciences	2		5	
School of Engineering	2	5	4	
Faculty of Environmental Studies	3		14	
Faculty of Fisheries	1	2	6	
Graduate School of International Health Development	1			
Graduate School of Engineering				1
Graduate School of Biomedical Sciences	9			7
Graduate School of Fisheries Science and Environmental Studies	1			7
Research and Development of Higher Education		1		
International Student Center			12	
Total	36	25	86	16

In addition to students shown in table, 25 others from affiliated universities in Nagasaki Prefecture take Nagasaki University courses for transferable credits.

FY 2012 New Students

Faculties and Schools

2012 . 5 . 1 (the number of person)

Admission Capacity, etc.		Admission Capacity		Applicants		Entrants	
Faculties and Schools		Admission Capacity		Applicants		Entrants	
Faculty of Education		240		743 2		240	
Faculty of Economics	Day Course	355		1,039 34		357 11	
	Evening-centered Course	60		87		57	
School of Medicine		222		1,069		222	
School of Dentistry		50		357 3		50	
School of Pharmaceutical Sciences		80		694		83	
School of Engineering		380		968 49		397 8	
Faculty of Environmental Studies		132 8		489 23		136 8	
Faculty of Fisheries		110		688 13		114 2	
Total		1,629 8		6,134 124		1,656 29	

indicates international students, and is excluded from the total.

Geographical Distribution by Entrants' Secondary Schools

2012 . 5 . 1 (the number of person)

Areas, etc.	Nagasaki	Kyushu (Except Nagasaki)	Chugoku Shikoku	Kinki	Chubu	Kanto	Tohoku Hokkaido	Returnee Students High School Equivalency Examination, etc.	Total
Faculty of Education	108	113	15	1	1	2			240
Faculty of Economics	150	245	6	8	1		2	2	414
School of Medicine	98	87	16	8	5	7		1	222
School of Dentistry	4	18	7	10	3	6	1	1	50
School of Pharmaceutical Sciences	24	40	12	2	1	3	1		83
School of Engineering	190	193	5	2	2	2	2	1	397
Faculty of Environmental Studies	48	73	9	3		1		2	136
Faculty of Fisheries	32	30	9	14	13	15	1		114
Total	654	799	79	48	26	36	7	7	1,656

Graduate Schools

2012 . 5 . 1 (the number of person)

Admission Capacity, etc.		Admission Capacity		Applicants		Entrants	
Graduate Schools		Admission Capacity		Applicants		Entrants	
Graduate School of Education	Master's Course	18		22 2		18 2	
	Professional Degree Program	20		24 1		20 1	
Graduate School of Economics	Master's Course	15		11 17		9 5	
	Doctoral Course	3		2 2		1 2	
Graduate School of Engineering	Master's Course	200		256 22		209 15	
	Doctoral Course	10		9 2		8 2	
	Doctoral Course (5-Year Program)	5		6		6	
Graduate School of Fisheries Science and Environmental Studies	Master's Course	60		57 12		46 8	
	Doctoral Course	12		11 3		11 3	
	Doctoral Course (5-Year Program)	5		5 2		2 1	
Graduate School of Biomedical Sciences	Master's Course	32		24		21	
	Doctoral Course	90		79 4		77 4	
	Master's Course	36		40 1		40 1	
	Doctoral Course	10		4		4	
Graduate School of International Health Development	Master's Course	10		22		10	
Total		526		572 68		482 44	

indicates international students, and is excluded from the total.

FY 2011 Graduates and Their Paths after Graduation

2012 . 3 . 31

Undergraduate Students (the number of person)

Faculties and Schools		2011	Total
Faculty of Education		249	16,661
Faculty of Economics	Day Course	366	14,915
	Evening-centered Course	59	499
School of Medicine		227	6,654
School of Dentistry		47	1,670
School of Pharmaceutical Sciences		83	4,130
School of Engineering		409	13,609
Faculty of Environmental Studies		149	1,587
Faculty of Fisheries		99	5,445
Total		1,688	65,170

Graduate Students (the number of person)

Graduate Schools		2011	Total
Graduate School of Education		32	599
Graduate School of Economics		16	212
Graduate School of Medical Sciences		6	1,294
Graduate School of Dentistry			149
Graduate School of Pharmaceutical Sciences			924
Graduate School of Engineering			1,758
Graduate School of Environmental Studies			46
Graduate School of Fisheries			616
Graduate School of Marine Science and Engineering			245
Graduate School of Science and Technology		269	2,824
Graduate School of Biomedical Sciences		158	1,159
Graduate School of International Health Development		13	30
Total		494	9,856

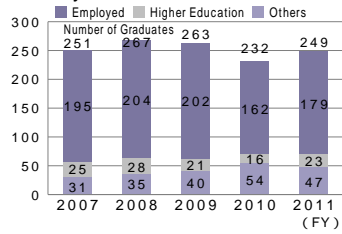
Paths after Graduation

(the number of person)

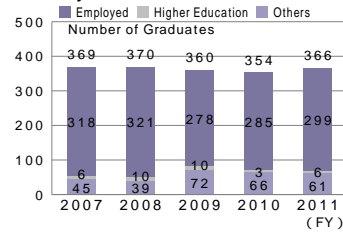
Faculties, etc.		Education	Economics	School of Health Sciences School of Medicine	Pharmaceutical Sciences	Engineering	Environmental Studies	Fisheries	Total
Line of Business									
Number of Graduates		249	366	115	83	409	149	99	1,470
Employed	Job seekers	209	318	100	39	154	108	57	985
	Employed	179	299	97	37	151	98	47	908
	Employment Rate	85.6	94.0	97.0	94.9	98.1	90.7	82.5	92.2
	Agriculture, forestry, and fishing		1				1	6	8
	Mining, Stone Crushing, and Gravel Extraction								
	Construction		10			30	5		45
	Manufacturing	1	32		2	58	7	9	109
	Electricity, Gas, Heat Supply, and Water		1				2		3
	Information and Communications, Transportation, and Postal Services	2	29			20	11	4	66
	Wholesale-Retail Business	5	31		11	3	14	10	74
	Banking-Insurance	3	79				10		92
	Real Estate and Leasing	1	6			1	3		11
	Academic Research and Expert and Technical Services	1	7		1	1	5	3	18
	Hotel and Restaurant Businesses	2	1			1	4	1	9
	Life-Related Services and Entertainment	3	6				2	1	12
	Education and Study Support Services	130	9		1	1	4	2	147
	Medicine and Welfare	19	6	94	20	2	4	4	149
	Compound Services		8				3		11
	Other Services		8			5	3	1	17
	Public Services	12	65	3	2	29	20	6	137
Non-Classifiable Services									
Higher Education		23	6	9	43	235	22	39	377
Others		47	61	9	3	23	29	13	185

Change in After-graduation Paths for the Past Five Years

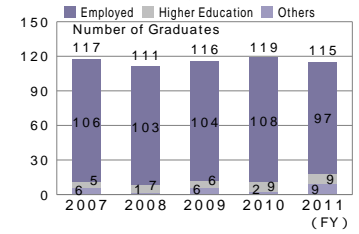
Faculty of Education



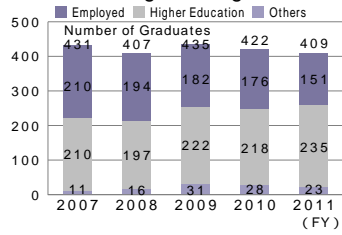
Faculty of Economics



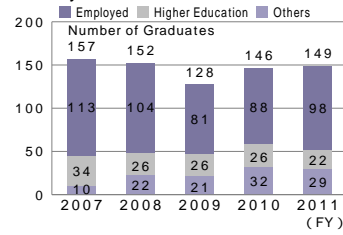
School of Health Sciences, School of Medicine



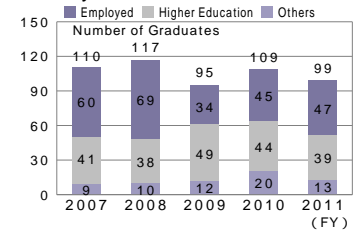
School of Engineering



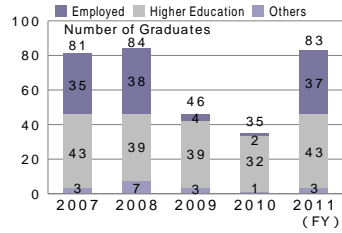
Faculty of Environmental Studies



Faculty of Fisheries



School of Pharmaceutical Sciences



Number of Degrees Conferred

2012 . 3 . 31

(the number of person)

Doctorate	Completion of both coursework and dissertation		Completion of dissertation only		Number of Degrees Conferred under the Former System
	2011	Total	2011	Total	
Philosophy	8	176	2	23	
Business Administration	1	10			
Medical Science	73	1,655	4	1,814	1,347
Dental Science	13	219	1	96	
Pharmaceutical Science	9	138		37	
Clinical Pharmacy		13			
Engineering	9	282	3	49	
Fisheries Science	5	58		14	
Environmental Science	5	16		2	
Total	123	2,567	10	2,035	1,347

(the number of person)

Master's	2011	Total
Science	7	43
Education	14	536
Economics	3	119
Business Administration	12	83
Tropical Medicine	15	70
Nursing	5	28
Physical Therapy	5	40
Occupational Therapy	3	19
Pharmaceutical Science	36	1,129
Clinical Pharmacy	4	209
Engineering	179	3,736
Fisheries Science	37	959
Environmental Studies	20	225
Public Health	13	30
Total	353	7,226

Master's	2011	Total
Master of Education (Professional)	18	63



International Exchange

FY 2012 International Students

Details by Faculty

2012 . 5 . 1 (the number of person)

Students Faculties, etc	Undergraduates	Graduates	Research Students, etc	Total	Students Faculties, etc	Undergraduates	Graduates	Research Students, etc	Total
	Faculty of Education			31		31	Graduate School of Education		6
Faculty of Economics	37		25	62	Graduate School of Economics		15		15
School of Medicine					Graduate School of Engineering		37 (2)	1	38 (2)
School of Dentistry					Graduate School of Fisheries Sciences and Environmental Studies		32 (3)	7	39 (3)
School of Pharmaceutical Sciences			6	6	Graduate School of Science and Technology		15		15
School of Engineering	28		5	33	Graduate School of Biomedical Sciences		78 (50)	3 (1)	81 (51)
Faculty of Environmental Studies	31		17	48	International Student Center			14 (2)	14 (2)
Faculty of Fisheries	4		6	10	Total	100 (0)	183 (55)	122 (7)	405 (62)

Number in () indicates government-sponsored international students, and is included in the total.

Details by Countries, etc.

(the number of person)

Students Countries, etc	Undergraduates	Graduates	Research Students, etc	Total	Students Countries, etc	Undergraduates	Graduates	Research Students, etc	Total
	Islamic Republic of Afghanistan		1 (1)	1 (1)		2 (2)	Malaysia	4	1
People's Republic of Bangladesh		10 (4)		10 (4)	Republic of Mali		2		2
Republic of Belarus		1 (1)		1 (1)	Republic of the Union of Myanmar		2	1 (1)	3 (1)
People's Republic of China	78	89 (4)	60 (1)	227 (5)	Federal Democratic Republic of Nepal		2 (2)		2 (2)
Democratic Republic of Congo		1 (1)		1 (1)	Kingdom of the Netherlands			8	8
Arab Republic of Egypt		7 (6)		7 (6)	Federal Republic of Nigeria		4 (4)		4 (4)
Republic of El Salvador		1 (1)		1 (1)	Republic of Paraguay		2 (2)		2 (2)
French Republic			2	2	Republic of Peru		1 (1)		1 (1)
Republic of Ghana		2 (1)		2 (1)	Republic of the Philippines			3 (2)	3 (2)
Republic of Guinea		1		1	Russian Federation		1 (1)		1 (1)
Republic of Indonesia		9 (2)		9 (2)	Republic of Singapore		1 (1)		1 (1)
Republic of Italy		1 (1)		1 (1)	The Republic of the Sudan		2 (2)		2 (2)
Republic of Kazakhstan		1		1	Taiwan		2	7	9
Republic of Kenya		10 (10)	3 (1)	13 (11)	Kingdom of Thailand	1	3	3	7
Republic of Korea	15	10	33	58	Republic of Turkey		1 (1)		1 (1)
Republic of Kosovo		1 (1)		1 (1)	Republic of Uganda		1 (1)		1 (1)
Lao People's Democratic Republic		1		1	Socialist Republic of Viet Nam	2	11 (6)		13 (6)
Libya		1 (1)		1 (1)	Total	100 (0)	183 (55)	122 (7)	405 (62)

Number in () indicates government-sponsored international students, and is included in the total. Countries, etc. are listed in alphabetical order.

Agreements on Academic Exchange with Overseas Institutions

2012 . 5 . 1

	Countries, etc.	Overseas Institutions	Managing Body	Date Signed	Date Renewed
1	People's Republic of China	Fujian Center for Disease Control and Prevention	Graduate School of Biomedical Sciences	August 23, 1989	October 1, 2008
2		Fudan University	Graduate School of Biomedical Sciences	October 4, 1989	November 30, 2009
3		Fuzhou University	Graduate School of Engineering	March 4, 1992	September 21, 2009
4		Ocean University of China	Faculty of Fisheries	January 20, 1997	March 9, 2009
5		China Pharmaceutical University	Graduate School of Biomedical Sciences	October 30, 1998	October 30, 2008
6		Fujian Medical University	Graduate School of Biomedical Sciences	August 6, 2001	July 23, 2007
7		Tongji University	Graduate School of Engineering	November 12, 2001	September 28, 2009
8		Dalian Ocean University	Faculty of Fisheries	January 17, 2003	January 17, 2008
9		The Fourth Military Medical University	Graduate School of Biomedical Sciences	March 26, 2003	March 26, 2008
10		Hong Kong Baptist University, School of Chinese Medicine	(School of Pharmaceutical Sciences)	July 9, 2004	July 9, 2009
11		Beijing Normal University	Faculty of Education	December 27, 2004	December 27, 2009
12		Beijing Institute of Education	Faculty of Education	December 28, 2004	May 15, 2009
13		Xinjiang Medical University	Graduate School of Biomedical Sciences	September 26, 2005	September 26, 2010
14		School of International Business Administration, Shanghai University of Finance and Economics	(Faculty of Economics)	November 21, 2005	November 18, 2010
15		Central South University	Graduate School of Biomedical Sciences	April 18, 2006	April 18, 2011
16		Northeast Normal University	Faculty of Education	March 22, 2007	March 22, 2012
17		Shanghai Ocean University	Graduate School of Fisheries Science and Environmental Studies	May 18, 2007	
18		Shanghai Normal University	Faculty of Education	June 27, 2007	
19		East China Normal University	Faculty of Education	July 2, 2007	
20		Jimei University	Faculty of Fisheries	August 9, 2007	
21		Tianjin University of Science & Technology	Graduate School of Engineering	December 10, 2007	
22		Jilin University	Faculty of Environmental Studies	January 8, 2008	
23		China Medical University	Institute of Tropical Medicine	September 21, 2010	
24		Peking Union Medical College	Institute of Tropical Medicine	September 20, 2010	
25		Jiangsu Institute of Parasitic Diseases	Institute of Tropical Medicine	September 20, 2010	
26		Shandong University	Graduate School of Engineering	November 1, 2010	

() indicates inter-faculty agreements.

	Countries, etc.	Overseas Institutions	Managing Body	Date Signed	Date Renewed
27	People's Republic of China	Shandong University of Science and Technology	Graduate School of Engineering	November 1, 2010	
28		Zhejiang Ocean University	Graduate School of Fisheries Science and Environmental Studies	July 28, 2011	
29		South-Western University of Finance and Economics	Faculty of Economics	March 1, 2012	
30	Taiwan	National Yang-Ming University	Graduate School of Biomedical Sciences	June 21, 2002	September 29, 2007
31		Tamkang University	Faculty of Environmental Studies	November 8, 2004	November 8, 2009
32		National Kaohsiung Marine University	Faculty of Fisheries	April 19, 2005	April 19, 2010
33		National Taiwan Ocean University	Faculty of Fisheries	August 9, 2005	August 9, 2010
34		Kaohsiung Medical University	Graduate School of Biomedical Sciences	August 1, 2006	August 1, 2011
35		National Chengchi University	Faculty of Environmental Studies	August 4, 2009	
36		National Taiwan University	Faculty of Environmental Studies	November 5, 2010	
37		National Taiwan Normal University	Graduate School of Fisheries Science and Environmental Studies	February 13, 2012	
38	Republic of Korea	Jeju National University	Graduate School of Engineering	February 5, 1991	June 3, 2009
39		Pukyong National University	Faculty of Fisheries	January 29, 1997	September 30, 2009
40		Kangwon National University	Graduate School of Engineering	April 4, 2002	April 2, 2012
41		Jinju Health College	Graduate School of Biomedical Sciences	September 11, 2002	December 28, 2007
42		Changwon National University	Faculty of Education	October 24, 2002	September 25, 2007
43		Chonnam National University	Graduate School of Fisheries Science and Environmental Studies	December 20, 2002	August 17, 2011
44		Inha University	Faculty of Fisheries	July 4, 2003	September 16, 2008
45		Hanyang University	Faculty of Education	October 10, 2003	October 10, 2011
46		Yonsei University	Faculty of Education	November 18, 2003	November 18, 2011
47		Korea Ocean Research & Development Institute	Faculty of Fisheries	February 11, 2004	February 11, 2009
48		Kyungpook National University	Faculty of Education	September 30, 2004	September 30, 2009
49		National Fisheries Research and Development Institute	Faculty of Fisheries	March 7, 2005	March 7, 2010
50		Ewha Womans University	International Student Center	February 22, 2006	February 22, 2011
51		Sungkyunkwan University	International Student Center	March 28, 2006	March 28, 2011
52		Kyung Hee University	International Student Center	August 21, 2006	August 21, 2011
53		Hallym University	Graduate School of Biomedical Sciences	May 23, 2007	
54		Seoul National University	Graduate School of Biomedical Sciences	July 16, 2007	

() indicates inter-faculty agreements.

	Countries, etc.	Overseas Institutions	Managing Body	Date Signed	Date Renewed
55	Republic of Korea	Pusan National University	Graduate School of Biomedical Sciences	September 13, 2007	
56		Yeungnam University	Graduate School of Engineering	February 28, 2008	
57		Silla University	Faculty of Education	June 17, 2008	
58		Korea National University of Education	Faculty of Education	October 25, 2010	
59		Chonbuk National University	Graduate School of Engineering	November 1, 2010	
60		Chung-Ang University	Faculty of Economics	March 1, 2012	
61	Mongolia	Health Sciences University of Mongolia	Graduate School of Biomedical Sciences	June 25, 2008	
62	Kingdom of Thailand	Chiang Mai University	Institute of Tropical Medicine · Faculty of Economics	September 5, 1990	April 1, 2011
63		Chulalongkorn University	Graduate School of Biomedical Sciences	March 26, 1999	April 5, 2009
64		Mahidol University	Institute of Tropical Medicine	November 1, 1999	June 14, 2010
65		Thammasat University	Institute of Tropical Medicine	March 13, 2006	March 13, 2011
66		Department of Medical Sciences, Ministry of Public Health	Graduate School of Biomedical Sciences	March 25, 2006	March 25, 2011
67	Republic of Indonesia	Sam Ratulangi University	Faculty of Fisheries	April 19, 1993	June 29, 2010
68		Trisakti University	Graduate School of Biomedical Sciences	October 11, 2003	October 11, 2008
69		Airlangga University	Institute of Tropical Medicine	January 20, 2004	January 20, 2009
70		Brawijaya University	Faculty of Fisheries	September 9, 2008	
71		Borneo University Tarakan	Faculty of Fisheries	July 8, 2010	
72	Republic of Singapore	National University of Singapore	Graduate School of Biomedical Sciences	June 15, 1987	April 16, 2010
73	Malaysia	Universiti Sains Malaysia	Faculty of Fisheries	May 15, 1995	September 30, 2009
74	Republic of the Philippines	University of the Philippines Diliman	Institute of Tropical Medicine	April 10, 2001	April 10, 2010
75		St. Luke's Medical Center	Institute of Tropical Medicine	February 17, 2004	February 17, 2009
76		San Lazaro Hospital Medical Center	Institute of Tropical Medicine	August 20, 2004	August 20, 2009
77		University of the East	Graduate School of Biomedical Sciences	January 26, 2005	January 26, 2010
78		University of the Philippines Visayas	Graduate School of Biomedical Sciences	March 17, 2010	
79	Socialist Republic of Viet Nam	National Institute of Hygiene and Epidemiology	Institute of Tropical Medicine	June 25, 2001	October 12, 2011
80		Can Tho University	Graduate School of Fisheries Science and Environmental Studies	February 23, 2012	
81	Republic of the Union of Myanmar	Department of Medical Science, Department of Medical Research, Ministry of Health (Myanmar)	Graduate School of Biomedical Sciences	February 20, 2007	February 20, 2012
82	People's Republic of Bangladesh	Bangladesh Rural Advancement Committee University	Graduate School of International Health Development	May 30, 2008	

() indicates inter-faculty agreements.

	Countries, etc.	Overseas Institutions	Managing Body	Date Signed	Date Renewed
83	India	Sree Chitra Tirunal Institute for Medical Sciences and Technology	Graduate School of International Health Development	July 17, 2008	
84		Defence Research and Development Establishment	Institute of Tropical Medicine	January 28, 2010	
85	United States of America	University of South Carolina	Graduate School of Fisheries Science and Environmental Studies	January 21, 1992	May 28, 2007
86		Michigan State University	Graduate School of Biomedical Sciences	March 6, 2002	December 3, 2007
87		University of Arizona	Faculty of Environmental Studies	August 27, 2002	May 12, 2008
88		University of Hawaii at Manoa	Faculty of Fisheries	June 14, 2007	
89		Minnesota State University, Mankato	International Student Center	November 14, 2011	
90	Federative Republic of Brazil	The Pontifical Catholic University of Rio Grande do Sul	Graduate School of Biomedical Sciences	March 10, 2006	March 10, 2011
91		Instituto Materno Infantil Professor Fernando Figueira	Graduate School of Biomedical Sciences	July 20, 2007	
92	Republic of Italy	Politecnico di Torino	Graduate School of Engineering	August 1, 1997	May 30, 2007
93		University of Naples Federico II	Graduate School of Engineering	May 4, 1998	May 4, 2008
94		University of Bari	Graduate School of Engineering	July 10, 2008	
95	United Kingdom of Great Britain and Northern Ireland	Gray Institute for Radiation Oncology and Biology, University of Oxford	(Graduate School of Biomedical Sciences)	February 26, 2003	January 9, 2009
96		The University of Liverpool	Graduate School of Biomedical Sciences	March 6, 2006	March 6, 2011
97	Federal Republic of Germany	Julius-Maximilians-Universität Würzburg	Graduate School of Biomedical Sciences	September 26, 1996	September 27, 2011
98		The Johannes Gutenberg University Mainz	Graduate School of Biomedical Sciences	June 21, 2010	
99	Portuguese Republic	The University of Porto	Graduate School of Biomedical Sciences	November 23, 2010	
100	Kingdom of the Netherlands	Leiden University	Graduate School of Biomedical Sciences	September 2, 1998	October 1, 2008
101	French Republic	École Nationale Supérieure de Chimie de Mulhouse Université de Haute-Alsace	Graduate School of Biomedical Sciences	September 9, 2005	September 9, 2010
102	Kingdom of Norway	Norwegian University of Science and Technology	Faculty of Fisheries	January 18, 2006	January 18, 2011
103	Republic of Belarus	Belarusian State Medical University	Graduate School of Biomedical Sciences	May 29, 1996	July 25, 2011
104		Gomel State Medical University	Graduate School of Biomedical Sciences	January 31, 2002	January 31, 2012
105		Belarusian Medical Academy of Post-Graduate Education	Graduate School of Biomedical Sciences	July 11, 2008	
106	Republic of Kazakhstan	Semey State Medical University	Graduate School of Biomedical Sciences	March 4, 1998	February 1, 2008
107		Scientific Research Institute of Radiation Medicine and Ecology	Graduate School of Biomedical Sciences	December 18, 2002	February 1, 2008
108		Kazakh National Medical University	Graduate School of Biomedical Sciences	August 26, 2009	
109		Kazakhstan-Russian Medical University	Graduate school of Biomedical Sciences	June 7, 2011	
110	Ukraine	Institute of Endocrinology and Metabolism, Academy of Medical Sciences of Ukraine	Graduate School of Biomedical Sciences	February 21, 2003	February 1, 2008

() indicates inter-faculty agreements.

	Countries, etc.	Overseas Institutions	Managing Body	Date Signed	Date Renewed
111	Ukraine	Research Centre for Radiation Medicine, Academy of Medical Sciences of Ukraine	Graduate School of Biomedical Sciences	February 21, 2003	February 1, 2008
112	Russian Federation	Medical Radiological Research Center of Russian Academy of Medical Sciences	Graduate School of Biomedical Sciences	July 5, 2002	November 1, 2007
113		Saint Petersburg Medical Academy of Postgraduate Studies	Graduate School of Biomedical Sciences	June 30, 2008	
114	Republic of Kenya	Kenyatta University	Graduate School of Biomedical Sciences	March 29, 2004	March 29, 2009
115		Kenya Medical Research Institute	Institute of Tropical Medicine	November 12, 2004	October 20, 2009
116		University of Nairobi	Graduate School of Biomedical Sciences	April 27, 2010	
117		Kenya Marine and Fisheries Research Institute	Graduate School of Fisheries Science and Environmental Studies	August 29, 2011	
118	Republic of South Africa	National Institute for Communicable Diseases of the National Health Laboratory Service	Institute of Tropical Medicine	July 8, 2010	
119	United Republic of Tanzania	Muhimbili University of Health and Allied Sciences	Graduate School of Biomedical Sciences	December 23, 2011	
120	Hashemite Kingdom of Jordan	The University of Jordan	Graduate School of Biomedical Sciences	March 12, 2003	March 12, 2008
121	Republic of Turkey	Karadeniz Technical University	Faculty of Fisheries	May 20, 2004	May 20, 2009

() indicates inter-faculty agreements.

Faculty Staff Visited Overseas Institutions and International Researchers Visited NU in FY 2011

Countries & Regions		Faculty Members	Overseas Researchers	Countries & Regions		Faculty Members	Overseas Researchers	
Asia	People's Republic of China	125	38	Europe	United Kingdom of Great Britain and Northern Ireland	36	1	
	Taiwan	32	10		French Republic	26	1	
	Republic of Korea	133	53		Federal Republic of Germany	33	4	
	ASEAN Countries	Republic of the Philippines	25		8	Kingdom of the Netherlands	18	
		Malaysia	10			Others	73	9
		Kingdom of Thailand	38		26	Kingdom of Norway	2	
		Republic of Indonesia	6		2	Swiss Confederation	7	
		Socialist Republic of Viet Nam	99		19	Others	2	
		Others	11		8	Russian Federation	6	1
		Others	36		6	Republic of Belarus	4	2
Americas	United States of America	184	9	Republic of Kazakhstan	3	3		
	Canada	22	3	Others	4	1		
	Federative Republic of Brazil	1	3	Republic of Kenya	67	7		
	Others	8	2	Others	21	3		
Middle East	Republic of Turkey	5	2	Africa	Australia	11	4	
	Others	1		Oceania	Others	2		
Total						1,051	225	



Social Contribution

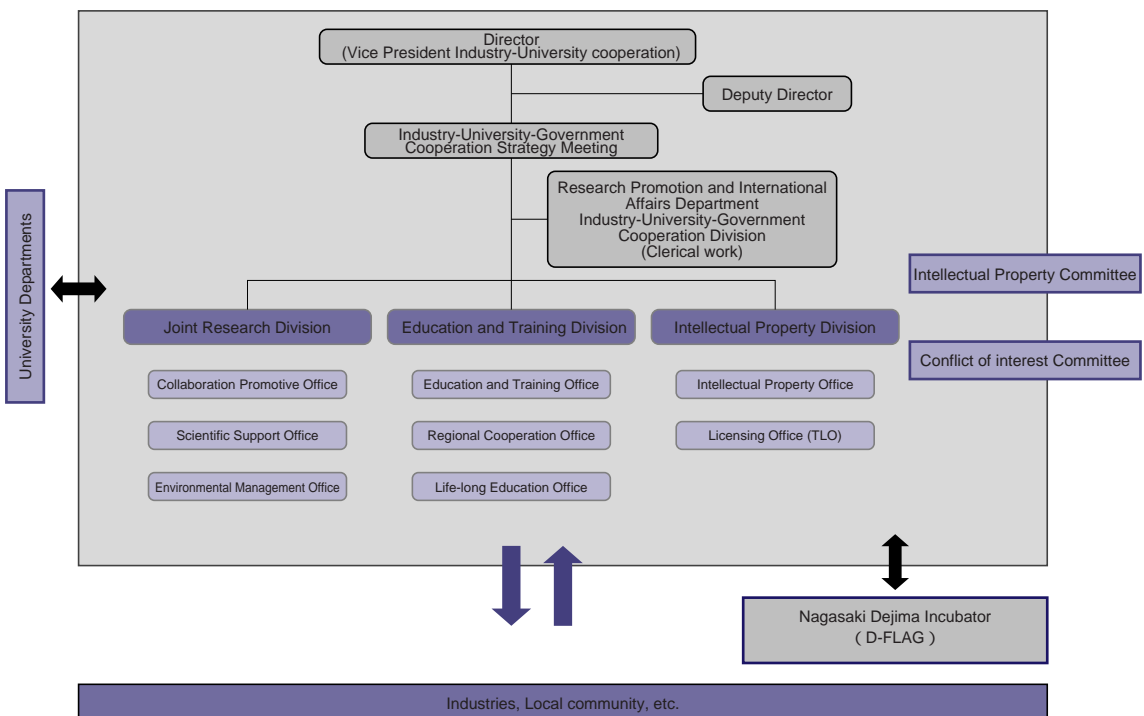
Center for Industry, University and Government Cooperation

The Center for Industry, University and Government Cooperation, established in June, 2011, consists of the Joint Research Division, the Education and Training Division and the Intellectual Property Division. The aim of this organization is to carry out comprehensive and functional industry-university-government cooperation, evaluation, management and application of research findings and to provide life-long learning opportunities under the strategic driving force of Nagasaki University.

As an intermediary between the university and the community, the Joint Research Division promotes providing research seeds and information, taking technical consultation, undertaking requested analysis and providing technical advice in instrumental analysis. The division also promotes the taking care of precision analytical instruments and the practice of the environmental safety management at Nagasaki University.

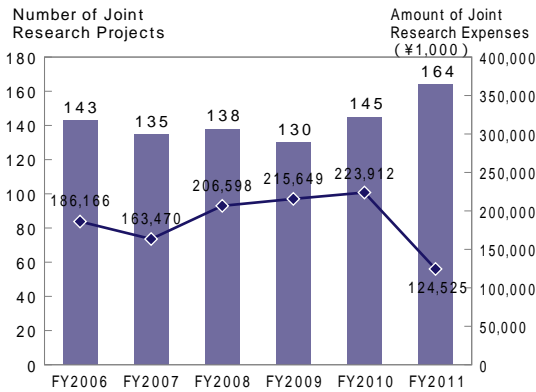
The Education and Training Division contributes to society by applying human resources supports for entrepreneurs and the local governments and promotes life-long learning programs that aim for the realization of the knowledge-based local society. The Intellectual Property Division protects and enhances research findings as intellectual properties of Nagasaki University in order to develop new products and industries providing research findings to industry, and results in contribution to global society.

Center for Industry, University and Government Cooperation Nagasaki University

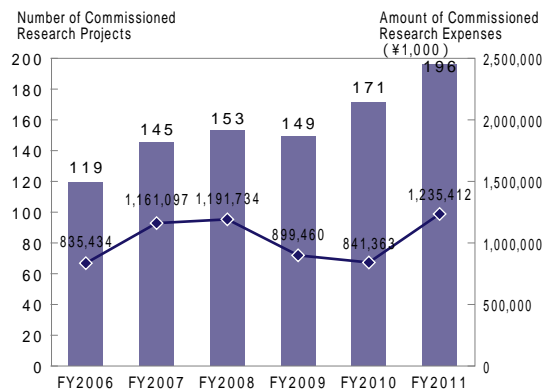


Industry-University Cooperation

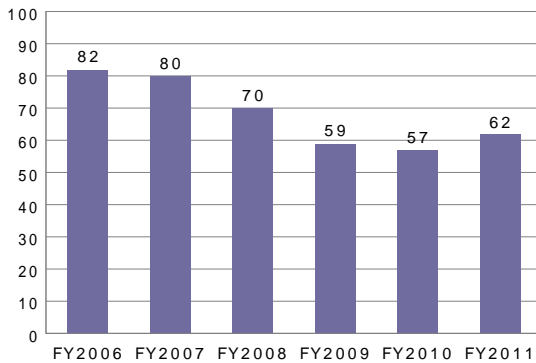
Joint Research



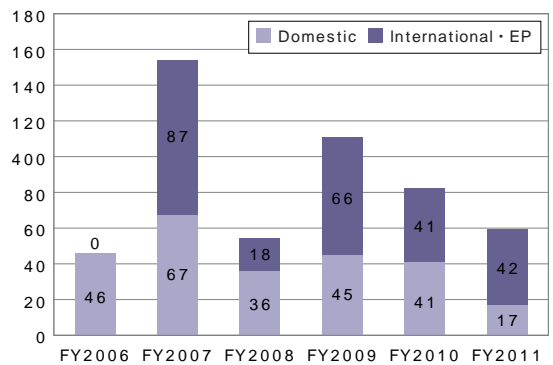
Commissioned Research



Invention Submission



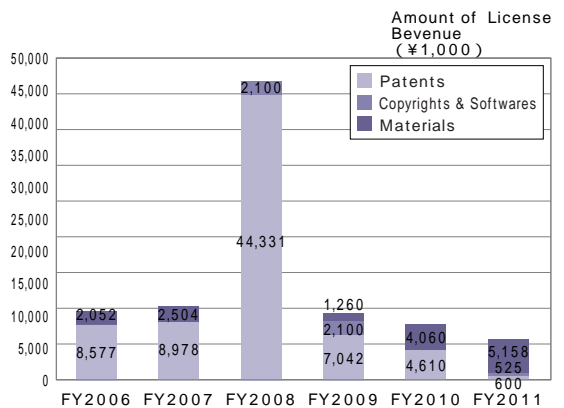
Number of Patent Applications



Number of Patent Licenses



License Revenue (including license and transfer)

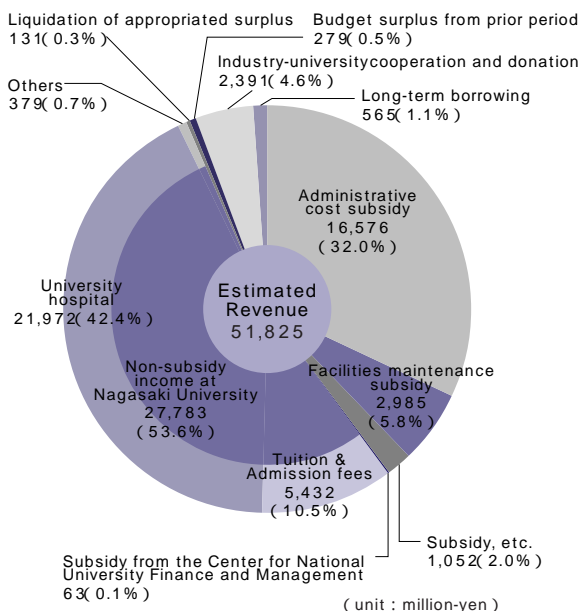




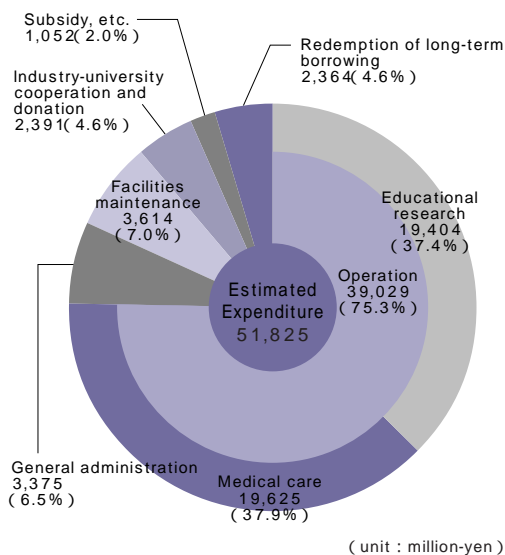
Finances

FY 2012 Budget

(Revenue)



(Expenditure)



Funds from outside the University

Grants-in-Aid for Scientific Research

Type of Research	Number of Grants	Prospective Amounts (¥1,000)
Grant-in-Aid for Scientific Research on Innovative Areas	14	68,100
Grant-in-Aid for Scientific Research (A)	6	82,800
Grant-in-Aid for Scientific Research (B)	66	272,300
Grant-in-Aid for Scientific Research (C)	244	296,300
Grant-in-Aid for Exploratory Research	74	89,100
Grant-in-Aid for Young Scientists (A)	4	24,100
Grant-in-Aid for Young Scientists (B)	127	163,700
Grant-in-Aid for Research Activity Start-up	7	6,900
Encouragement of Science	9	5,200
Grant-in-Aid for Publication of Scientific Research Result	1	900
Grant-in-Aid for JSPS Fellows	8	8,000
Total	560	1,017,400

Scholarship

Number	Amounts (¥1,000)
1,680	998,100

Commissioned Research

Number	Amounts (¥1,000)
196	1,235,412

Joint Research with Private Sectors

Number	Amounts (¥1,000)
164	124,525

" Prospective Amounts" shows direct cost only.



Campus

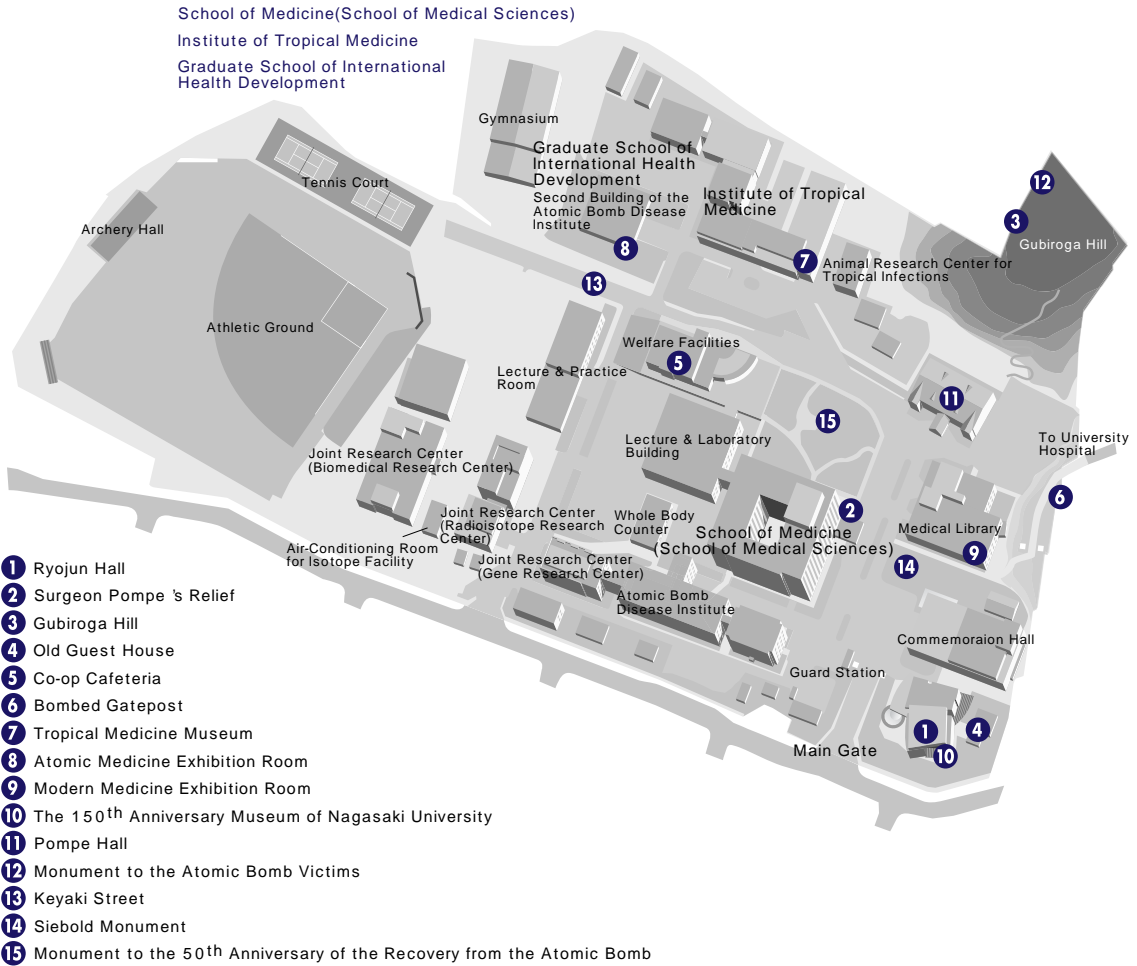
Bunkyo Campus

Administration Bureau
 Faculty of Education
 School of Pharmaceutical Sciences
 School of Engineering
 Faculty of Environmental Studies
 Faculty of Fisheries
 Central Library

- 1 Clock Tower and Mural
- 2 Whale Cannon
- 3 Co-op Cafeteria and Wood Deck
- 4 Statue of Youth
- 5 Cenotaph for A-Bomb Victims
- 6 Co-op Bunkyo Campus Store
- 7 Center for Gender Equality
- 8 Nakabe Hall
- 9 Omoiai Square and Biotope
- 10 Extra-Curricular Activities Room 1
- 11 Statue of Honorary Doctor Osamu Shimomura
- 12 Medicinal Plant Garden
- 13 University Library Old Japanese Photo Exhibition Room
- 14 Monument to the Mitsubishi Weapons Factory
- 15 Chionanthus Retusus



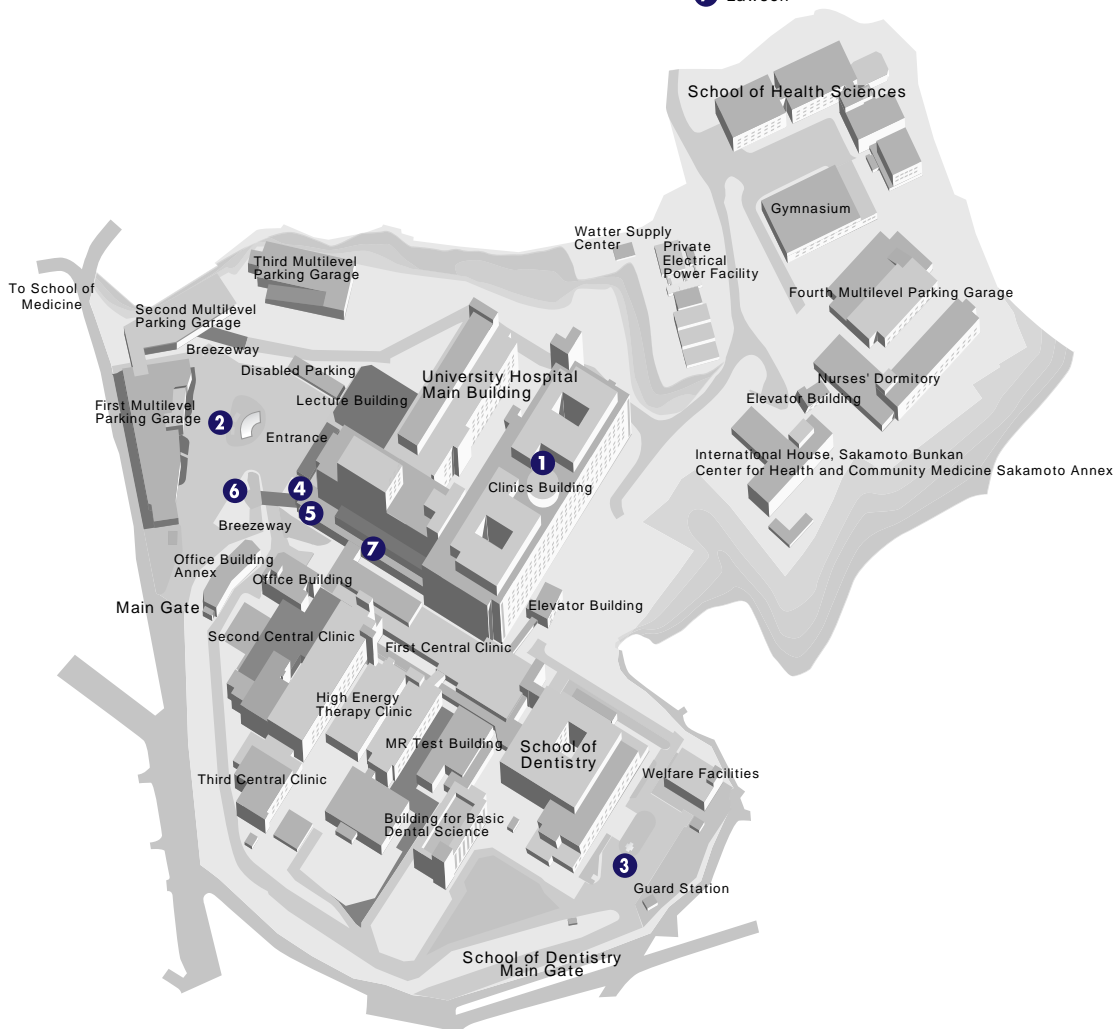
Sakamoto Campus 1



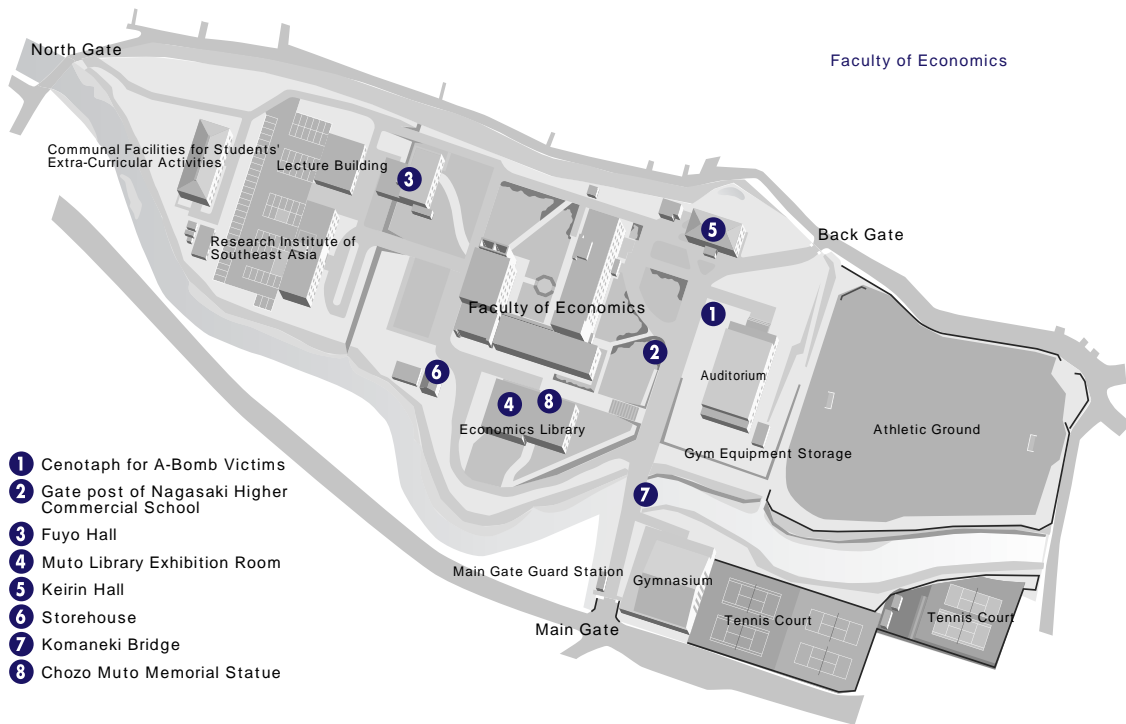
Sakamoto Campus 2

School of Health Sciences
 School of Dentistry
 University Hospital

- 1 Sky Lounge Pompe
- 2 Statue of Child Holding Up a Water Bowl
- 3 Bombed Camphor Tree
- 4 Inner Garden
- 5 Corridor
- 6 Monument to Nagasaki Medical College Hospital
- 7 Lawson

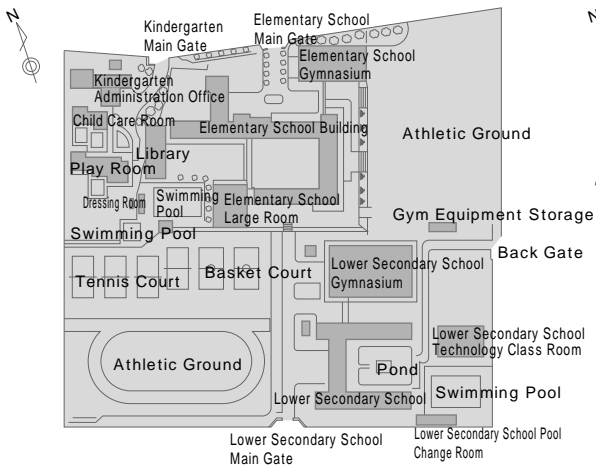


Katafuchi Campus

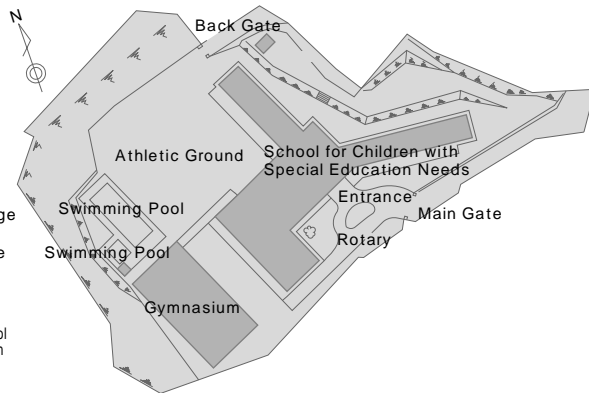


- 1 Cenotaph for A-Bomb Victims
- 2 Gate post of Nagasaki Higher Commercial School
- 3 Fuyo Hall
- 4 Muto Library Exhibition Room
- 5 Keirin Hall
- 6 Storehouse
- 7 Komaneki Bridge
- 8 Chozo Muto Memorial Statue

Affiliated Schools (Kindergarten · Elementary School · Lower Secondary School)



School for Children with Special Education Needs



Welfare Facilities

Sports facilities

Facilities Campuses	Gymnasium	Archery Hall	Judo Hall	Kendo Hall	Martial Art Hall	Tennis Court	Athletic Ground	Volleyball Court	Swimming Pool	Handball Court	Remarks
	Bunkyo Campus	2	1	1	1		8	1	2	1	
Katafuchi Campus	1					4	1				
Sakamoto Campus	2	1			1	2	1				
Total	5	2	1	1	2	16	3	2	1	1	

Other major facilities

Name	Departments, etc.	Address	Facilities	Services	Governing Bodies
Seaside Training Center	Student Support Department	Shishigawa Go, Togitsu Cho, Nishisonogi Gun	Accommodation facilities Dining room Boats	Student extra-curricular activities Workshop for university staff Recreation	Nagasaki University
Shimabara Joint Training Center For National Universities in Kyusyu Area	"	1201 Ko Kureishibaru Shimabara City	Accommodation facilities Physical education facilities	Workshop Recreation	Nagasaki University
Communal Facilities for Students' Extra-Curricular Activities	"	1-14 Bunkyo, Bunkyo campus	Communal room All purpose room Meeting room	Student extra-curricular activities	Nagasaki University
Student Union	"	"	Getting a job support, Career information section Communal lounge Japanese room Tea-ceremony room Multipurpose room Cafeteria Coffee shop School supply store Barber Beauty shop	Collection of job information, offer and consultation Student extra-curricular activities Sale of food Cafeteria Coffee shop Sale of books and daily necessities Hair trimming and setting	Nagasaki University Nagasaki University Co-op Suppliers
Student Plaza	"	"	Multipurpose hall 1 Multipurpose hall 2	Student extra-curricular activities	Nagasaki University
Communal Facilities for Student Extra-Curricular Activities	Faculty of Economics	4-2-1 Katafuchi Faculty of Economics Katafuchi campus	Lounge Communal room Communal meeting room Music practice room Music appreciation room Workshop room Photo lab All purpose room	Student extra-curricular activities Accommodation facilities	Nagasaki University

Name	Departments, etc.	Address	Facilities	Services	Governing Bodies
Sakamoto Campus 1 Communal Facilities for Student Extra- Curricular Activities	School of Medical Sciences, School of Medicine	1-12-4 Sakamoto School of Medicine Sakamoto campus	Communal room Music practice room Outdoor equipment storage	Student extra- curricular activities	Nagasaki University
Sakamoto Campus 2 Communal Facilities for Student Extra- Curricular Activities	School of Health Sciences, School of Medicine	1-7-1 Sakamoto School of Health Sciences School of Medicine Sakamoto campus	Communal room · Lounge Communal meeting room Equipment storage	Student extra- curricular activities	Nagasaki University
Fuyo Hall	Faculty of Economics	4-2-1 Katafuchi Faculty of Economics Katafuchi campus	Lounge · Japanese room Meeting room · Cafeteria School supply store	Student extra-curricular activities Coffee shop Cafeteria · Sale of books and daily necessities	Nagasaki University Nagasaki University Co-op
Welfare facilities	School of Medical Sciences, School of Medicine	1-12-4 Sakamoto School of Medicine Sakamoto campus	Lounge Cafeteria · School supply store	Cafeteria Sale of books, food, and daily necessities	Nagasaki University Nagasaki University Co-op
"	School of Dentistry	1-7-1 Sakamoto School of Dentistry Sakamoto campus	Lounge · Japanese room Cafeteria	Student extra-curricular activities Cafeteria Sale of books and daily necessities	Nagasaki University Nagasaki University Co-op
"	School of Health Sciences, School of Medicine	1-7-1 Sakamoto University Hospital Sakamoto campus	Cafeteria School supply store	Cafeteria Sale of daily necessities	Nagasaki University Co-op

Land · Buildings · Ships

Land and Buildings

Faculties, Centers, etc.	Address	Land (㎡)		Buildings (㎡)	
		University-owned	Leased	University-owned	Leased
Bunkyo Campus	1-14 Bunkyo, Nagasaki City	187,125		40,981 120,561	
Accommodation Facility "Kangetsuso"	1-1-1 Kami Nishiyama, Nagasaki City	903		228 399	
Seaside Training Center	Shishigawa Go, Togitsu Cho, Nishisonogi Gun	1,451	106	371 616	
Kindergarten·Elementary School· Lower Secondary School	4-2-3 Bunkyo, Nagasaki City	51,185		8,258 15,745	
School for Children with Special Education Needs	4-2-1 Yanagidani Machi, Nagasaki City	12,529		2,169 3,372	
Faculty of Economics, Economics Library	4-2-1 Katafuchi, Nagasaki City	51,843		6,875 16,434	
Sakamoto Campus 1	1-12-4 Sakamoto, Nagasaki City	91,231		17,058 50,921	
School of Medicine Charnel House	4-5-9 Zenza, Nagasaki City		48	13 13	

Faculties, Centers, etc.	Address	Land (m ²)		Buildings (m ²)	
		University-owned	Leased	University-owned	Leased
Sakamoto Campus 2	1-7-1 Sakamoto, Nagasaki City	86,807		<u>30,701</u> 163,672	
Nomozaki Research Laboratory	1321 Nomo Machi, Nagasaki City	15,899		<u>448</u> 448	
Institute for East China Sea Research	1551-7 Taira, Nagasaki City	10,900		<u>1,227</u> 1,739	
University Housing		22,753		<u>2,648</u> 11,450	<u>1,106</u> 3,304
Shimabara Joint Training Center for National Universities in Kyushu Area	1201 Ko Kureishibaru, Shimabara City	120,286		<u>1,793</u> 2,329	
International House	12-1 Nishi Machi, Nagasaki City	3,044		<u>635</u> 1,837	<u>499</u> 1,300
University Housing		3,008			<u>910</u> 2,414
Sub Total		658,964	154	<u>113,405</u> 389,536	<u>2,515</u> 7,018
Total					659,118

Ships

Faculty and Department	Ship's name	Material	Gross tonnage	PS	Complement
Faculty of Fisheries	Nagasaki-Marū	Steel Ship	842.00	2,800	22 instructors & staff plus 40 students
	Kakuyo-Marū	Aluminum Alloy Ship	155.00	1,428 × 2	15 instructors & staff plus 18 students
Student Support Department	Kinpu	F R P		90	Rescue Boat Capacity : 10

Address/TEL of Faculties, Centers, etc.

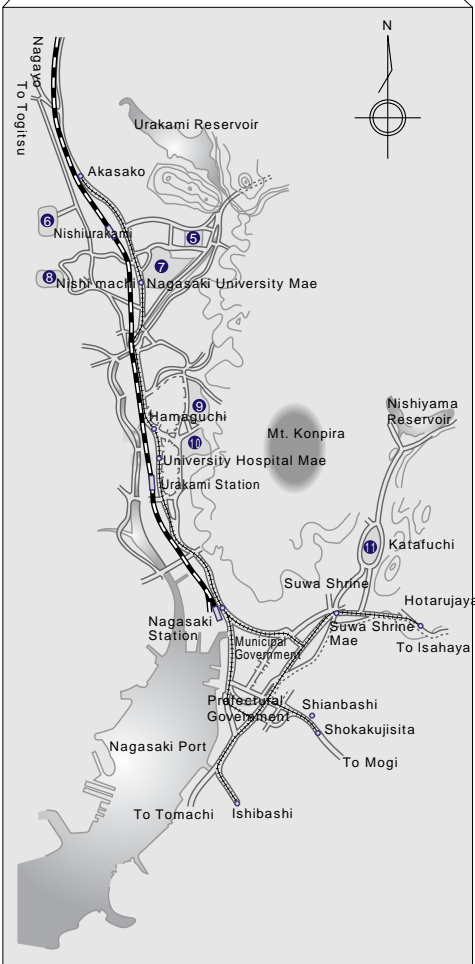
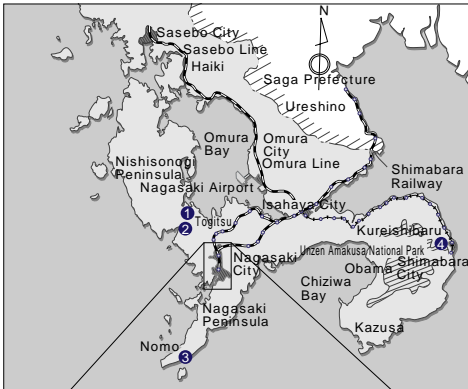
Faculties, etc.	TEL	Address
• Center for International Collaborative Research	095 819 7008	1-12-4 Sakamoto, Nagasaki City 852-8523
• Center for Industry, University and Government Cooperation		
Joint Research Division	095 819 2231	1-14 Bunkyo, Nagasaki City 852-8521
Education and Training Division	095 819 2876	"
	Education and Training	
	095 819 2233	
	Life-Long Education	
Intellectual Property Division	095 819 2188	"
• Center for Public Relations Strategy	095 819 2018	"
• Audit Office	095 819 2182	"
• Student Affairs Information	095 819 2184	"
• Promotion Office		"
Administration Bureau	095 819 2016	
	General Planning Division	
	095 819 2032	
	Personnel Division	
	095 819 2039	
	Research Planning Division	
	095 819 2038	
	Industry-University-Government Cooperation Division	
	095 819 2120	
	International Exchange Division	
	095 819 2065	
	Finance Planning Division	
	095 819 2060	
	Finance Management Division	
	095 819 2066	
	Accounting Procurement Division	
	095 819 2072	
	Education Support Division	
	095 819 2103	
	Student Support Division	
	095 819 2111	
	Admission Division	
	095 819 2131	
	Facilities Planning Division	
	095 819 2137	
	Facilities Maintenance Division	

Faculties, etc.	TEL	Address
	095 819 2141 Facilities Management Division	
	095 819 2022 Information Planning Division	
	095 819 2193 Academic Information Management Division	
	095 819 2198 Academic Information Services Division	
• Center for Health and Community Medicine	095 819 2214	"
• Center for Frontier Life Sciences		
Radioisotope Research Center	095 819 7150	1-12-4 Sakamoto, Nagasaki City 852-8523
Biomedical Research Center	095 819 7134	"
Gene Research Center	095 819 7191	"
• Information Media Center Joint Research Center	095 819 2222	1-14 Bunkyo, Nagasaki City 852-8521
• International Student Center	095 819 2209	"
• Research and Development Center for Higher Education	095 819 2077	"
• Admission Center	095 819 2114	"
• Advanced Computing Center	095 819 2705	"
• Center for Language Studies	095 819 2077	"
• Research Center for Nuclear Weapons Abolition	095 819 2164	"
• Medical Innovation Center	095 819 2230	"
• International House	095 845 0201	12-1 Nishi Machi, Nagasaki City 852-8043
• International House, Sakamoto Bunkan	095 819 7519	1-7-1 Sakamoto, Nagasaki City 852-8102
• Seaside Training Center	095 882 8301	Shishigawa Go, Togitsu Cho, Nishisonogi Gun 851-2111
• Faculty of Education	095 819 2263	1-14 Bunkyo, Nagasaki City 852-8521
Kindergarten	095 819 2288	4-23 Bunkyo, Nagasaki City 852-8131
Elementary School	095 819 2272	"
Lower Secondary School	095 819 2278	"
School for Children with Special Education Needs	095 845 5646	42-1 Yanagidani, Nagasaki City 852-8046
Center for Education Research and Training	095 819 2291	1-14 Bunkyo, Nagasaki City 852-8521
• Faculty of Economics	095 820 6300	4-2-1 Katafuchi, Nagasaki City 850-8506
• School of Medicine		
School of Medical Sciences	095 819 7000	1-12-4 Sakamoto, Nagasaki City 852-8523
School of Health Sciences	095 819 7900	"
• University Hospital	095 819 7200	"
• School of Dentistry	095 819 7600	"
• School of Pharmaceutical Sciences	095 819 2413	1-14 Bunkyo, Nagasaki City 852-8521

Audio assistance
is available after
office hours.

Faculties, etc.	TEL	Address
• School of Engineering	095 819 2489	1-14 Bunkyo, Nagasaki City 852-8521
• School of Environmental Studies	095 819 2713	"
• Faculty of Fisheries	095 819 2793	"
Training Ship "Nagasaki-Marui"	090 3022 2043	Taira, Nagasaki City 851-2213
Training Ship "Kakuyo-Marui"	090 3022 2044	"
• Institute of Tropical Medicine	095 819 7800	1-12-4 Sakamoto, Nagasaki City 852-8523
Center for Infectious Disease Research in Asia and Africa	"	"
Animal Research Center for Tropical Infections	"	"
Tropical Medicine Museum	095 819 7868	"
• Central Library	095 819 2193	1-14 Bunkyo, Nagasaki City 852-8521
Medical Library	095 819 7013	1-12-4 Sakamoto, Nagasaki City 852-8523
Economics Library	095 820 6309	4-2-1 Katafuchi, Nagasaki City 850-8506
• Graduate School of Engineering	095 819 2489	1-14 Bunkyo, Nagasaki City 852-8521
• Graduate Schools of Fisheries Science and Environmental Studies		
(Institute of Fisheries Science)	095 819 2793	1-14 Bunkyo, Nagasaki City 852-8521
(Institute of Environmental Studies)	095 819 2713	"
Institute for East China Sea Research	095 850 7311	1551-7 Taira, Nagasaki City 851-2213
• Graduate School of Science and Technology	095 819 2491	1-14 Bunkyo, Nagasaki City 852-8521
• Graduate School of Biomedical Sciences		
(Medical Sciences)	095 819 7000	1-12-4 Sakamoto, Nagasaki City 852-8523
(Health Sciences)	095 819 7900	1-7-1 Sakamoto, Nagasaki City 852-8520
(Dental Sciences)	095 819 7600	1-7-1 Sakamoto, Nagasaki City 852-8588
(Pharmaceutical Sciences)	095 819 2413	1-14 Bunkyo, Nagasaki City 852-8521
Atomic Bomb Disease Institute	095 819 7000	1-12-4 Sakamoto, Nagasaki City 852-8523
Medicinal Plant Garden	095 819 2413	1-14 Bunkyo, Nagasaki City 852-8521
• Graduate School of International Health Development	095 819 7008	1-12-4 Sakamoto, Nagasaki City 852-8523
• Yattemyu Desk	095 819 2870	1-14 Bunkyo, Nagasaki City 852-8521
• Center for Gender Equality	095 819 2889	"
• Shimabara Joint Training Center for National Universities in Kyushu Area	0957 64 2201	1201 Ko Kureishibaru, Shimabara City 855-0026
• Tokyo Office	03 6268 9116	2 Floor, Terashima-bunko build, 1-9-17 Kudan kita, Chiyoda-ku, Tokyo 102-0073

Location Map



Seaside Training Center
 Institute for East China Sea Research
 Nomozaki Research Laboratory
 Shimabara Joint Training Center for National Universities in Kyushu Area
 Kindergarten, Elementary School, Lower Secondary School
 School for Children with Special Education Needs
 Center for Industry, University and Government Cooperation, Center for Public Relations Strategy, Audit Office, Student Affairs Information Promotion Office, Administration Bureau, Faculty of Education, Center for Education Research and Training, School of Pharmaceutical Sciences, School of Engineering, Faculty of Environmental Studies, Faculty of Fisheries, Central Library, Graduate School of Engineering, Graduate School of Fisheries Science and Environmental Studies, Graduate School of Biomedical Sciences (Pharmaceutical Sciences), Medicinal Plant Garden, Center for Health and Community Medicine, Center for Frontier Life Sciences, Information Media Center, International Student Center, Research and Development Center for Higher Education, Admission Center, Advanced Computing Center, Center for Language Studies, Research Center for Nuclear Weapons Abolition, Yattemyu Desk, Center for Gender Equality, Research Promotion Section, Medical Innovation Center
 International House
 Center for International Collaborative Research
 School of Medicine (School of Medical Sciences)
 Institute of Tropical Medicine
 Graduate School of Biomedical Sciences (Medical Sciences)
 Graduate School of International Health Development
 Atomic Bomb Disease Institute
 Center for Frontier Life Sciences
 Medical Library
 University Hospital, School of Dentistry, Graduate School of Biomedical Sciences (Health Sciences · Dental Sciences), School of Medicine (School of Health Sciences)
 Faculty of Economics, Economics Library

Nagasaki University Logo

Formal Logo



The formal logo was designed in 1949 to raise a sense of common bonds among university members and to provide moral support for them in developing as a university. A Dutch ship representing Nagasaki, the only door for the Western culture during the Period of Isolation, has the initial letters of Nagasaki University “N.U.” on its bow as well as the Chinese character “大學” meaning “university” at its right.

With its reorganization into a National University Corporation, the existing symbol mark was modified on April 1, 2005 to establish the formal university logo.

Informal Logo



The informal logo was designed on April 1, 2005 for use in a variety of more casual occasions.

The yellow line in the center stands for “Students and Faculty”, while the green line on the right is for the “Land Area of Japan and Its Territory” with its rich natural environment. The blue line on the left represents the “Vast Sea with the International Community” surrounding the “Land Area of Japan and Its Territory”.

The points where the lines intersect show “Harmony and Contribution” among the areas, and the yellow circles are meant to express “Creativity”.

Seen as a whole, the yellow line for the “Students and Faculty” and the green line for the “Land Area of Japan and Its Territory” form the inverted Chinese character of “Person”, while the yellow line and the blue line for the “Vast Sea with the International Community” configure “Person” again. All together the lines shape the letter “N” for Nagasaki University.

OUTLINE OF NAGASAKI UNIVERSITY 2012



国立大学法人

長崎大学
NAGASAKI UNIVERSITY

Center for Public Relations Strategy, Nagasaki University
1-14 Bunkyo, Nagasaki City 852-8521 TEL 095-819-2018

URL <http://www.nagasaki-u.ac.jp/>